

# Carroll High School

You can have  
whatever you  
want . . .

If you

*dress*

for it.

***Dress for Success***

***2017-2018***



# Jewelry that creates hazardous conditions shall not be worn.

Clarification: Spiked bracelets or earrings, chains, etc. are not acceptable.

## ACCEPTABLE



## NOT ACCEPTABLE





# Hats, caps, and headcoverings (including sleepwear accessories) shall not be worn in the building...

---

Clarification: Entire tops of heads may not be covered.

ACCEPTABLE



NOT ACCEPTABLE





Unbuckled belts or suspenders shall not be worn.

---

ACCEPTABLE



NOT ACCEPTABLE





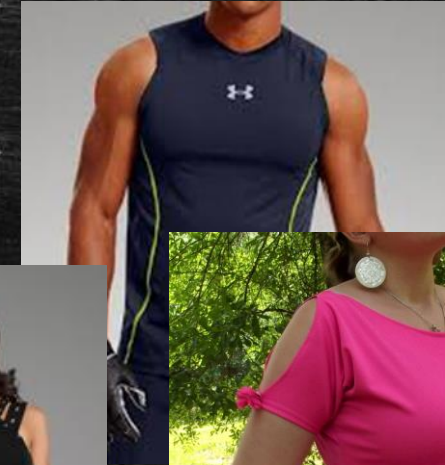
Shirts are required to have solid sleeves that cover or cap the entire shoulder.

Clarification: Sleeveless is not permissible. Slits or holes in sleeves are not permissible.

**ACCEPTABLE**



**NOT ACCEPTABLE**





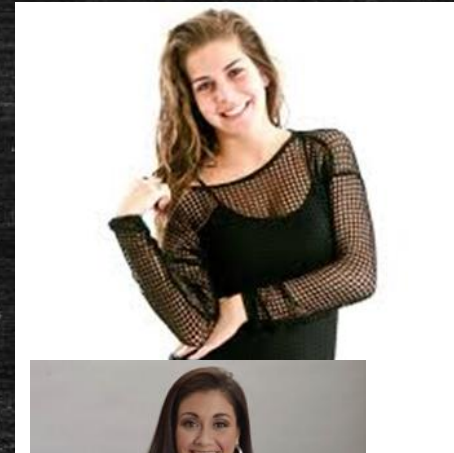
# See-through clothing...or clothes that bare the midriff are not allowed.

Clarification: If sheer or see-through clothing is worn, the garment under the layer of see-through material must meet dress code requirements.

## ACCEPTABLE



## NOT ACCEPTABLE





Shorts, skirts, or dresses...shorter than fingertip length around the entire garment are not allowed.

---

### ACCEPTABLE



### NOT ACCEPTABLE





Splits in shorts/skirts/dresses should not be higher than the fingertips.

---

ACCEPTABLE



NOT ACCEPTABLE





Leggings may be worn with appropriate length dresses, skirts, or tunics.

Clarification: ...leggings with T-shirts / sweatshirts are not permitted.

### ACCEPTABLE



### NOT ACCEPTABLE





Beginning in the 9th grade, no athletic pants or shorts may be worn **outside of the P.E. classroom** unless approved by the principal for team activities.

## ACCEPTABLE



## NOT ACCEPTABLE





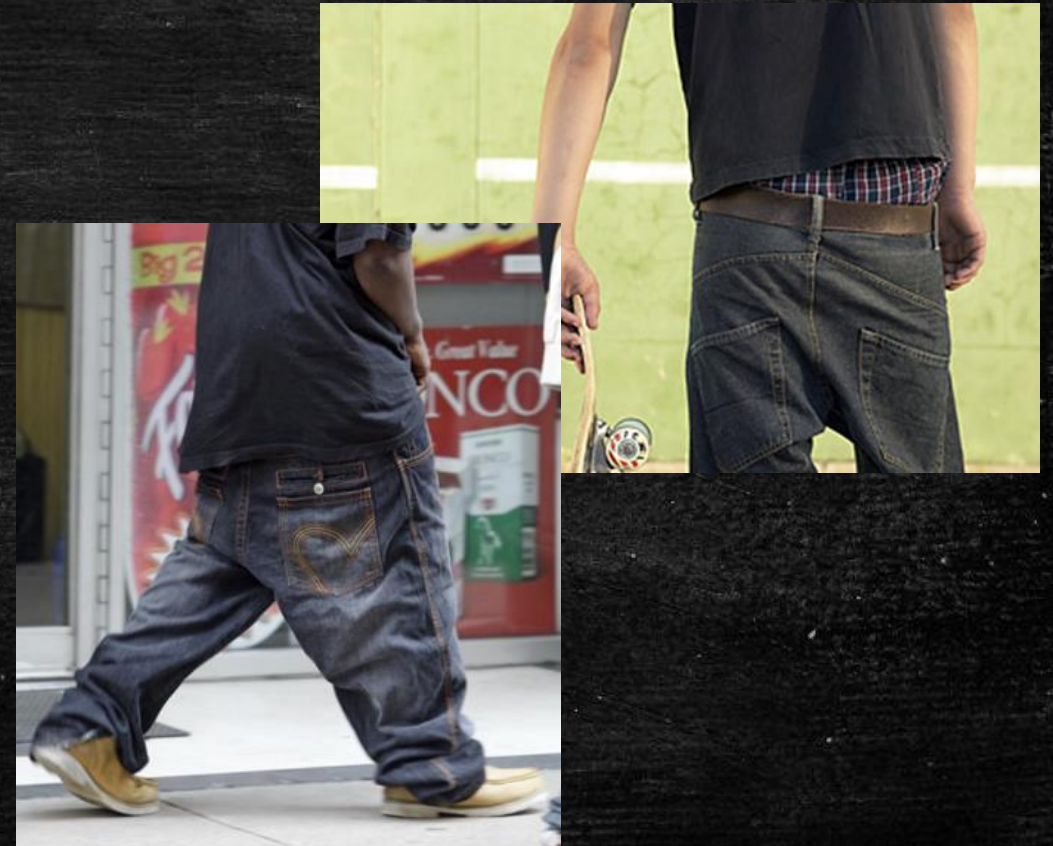
Sagging pants, oversized pants or pants not worn at the waist are not allowed.

---

## ACCEPTABLE



## NOT ACCEPTABLE





No holes, frays, patches, or tears are allowed in shirts, pants, skirts or shorts.

---

### ACCEPTABLE



### NOT ACCEPTABLE





Male students are required to tuck in all shirts. Shirts must be tucked in all around the waist so that belt loops and/or waistband is visible.

---

### ACCEPTABLE



### NOT ACCEPTABLE





Students with facial piercings other than earrings are required to wear clear retainers.

---

### ACCEPTABLE



### NOT ACCEPTABLE





# DISCLAIMER

---

- ✓ Students will not be allowed to attend school if their appearance or dress constitutes a health or safety hazard or disrupts the orderly operation of the school.
- ✓ *The Principal is responsible for making judgments in this area.*
- ✓ All areas from the dress code are not addressed in the previous pictures. Only areas of confusion have been addressed.
- ✓ For a more in depth explanation please email one of the Carroll High School administrators.

