



Bulldog Pride



Volume 9, Issue 5

Heather Armelino, Principal

224-4160 phone - 224-4161 fax

March 2017

- 3/1 Coffee w/Principal, 7:30-8:00
- 3/2 Tutoring T2 Window Closes
- 3/2 Girl Scouts Recruitment Night, 6:30 (Gym), K-5
- 3/4 Father/Daughter Dance, 6-8pm
- 3/5 Mother/Son Viking Skate Night, 4:45-6:45
- 3/7 Spelling Bee (4th – 6th), 12:30
- 3/8 Spelling Bee (7th & 8th), 12:30
- 3/8 Jr. High Softball Tryouts (Day 1 of 2), 2:30-4:00
- 3/8 Jr. High Softball Tryouts (Day 2 of 2), 2:30-4:00
- 3/8 PTO Meeting, 6:30
- 3/8 ACE Registration, 4:30-7:00 (Gym)
- 3/13 Progress Reports
- 3/15 Music Booster Meeting, 5:15-6:00, Room 204
- 13-17 Parent/Teacher Conferences – Minimum Days
- 13-17 Spring Book Fair
- 3/21 Tutoring T3 Begins
- 3/21 T2 Academic Awards, 2-3, 8:30 (Gym)
- 3/21 T2 Academic Awards, K-1, 10:00 (Gym)
- 3/21 T2 Academic Awards, 6th Grade & Mrs. Posts' class, 1:30
- 3/22 WES camp parent visitation, 4-5pm
- 3/23 T2 Academic Awards, 4-5, 8:30 (Gym)
- 3/23 T2 Academic Awards, 7-8, 1:00 pm (Gym)

Principal's Corner

Second trimester wraps up on February 23, and teachers are looking forward to sharing students' progress during March parent-teacher conferences. This month we're excited to have film crews on campus capturing footage of STEM instruction in some of our 2nd, 5th, and 8th grade classrooms as a model for schools across the country. As part of Enterprise Elementary School District, we are also proud to lead the way in integrating technology in the classroom to enhance learning. Check out some photos of students on a Google Expedition. What is a Google Expedition? It's a virtual reality teaching tool that lets students experience immersive virtual trips all over the world! **See page 2 for pictures.**



Parents are invited to stop in for **Coffee with the Principal** on the first Wednesday of each month from 7:30-8:00 in the library. Stop by and introduce yourself, ask questions, share suggestions, or just grab a cup of coffee on your way to work. See you there!





Mrs. Trueblood's 6th graders tour Ancient Greece to see the places they've been learning about in history class.



Fourth graders in Mrs. Upshaw's class visit the Grand Canyon as part of their unit study on geology.



Kindergarteners visit the Great Barrier Reef to enhance their learning about the ocean in Mrs. Speers' class



Bulldog families having fun at Math Night on January 26th.

After - School Tutoring Dates:

- ♦ **Trimester 2**
ends on March 2nd
- ♦ **Trimester 3**
March 21st ~ May 11



Registration for 2017/2018 is fast approaching!

ALL students must register every year for ACE. If you would like your child to participate in ACE for the 2017/2018 school year, you must complete a registration packet for the lottery.

ACE registration for Mistletoe School will take place in the Mistletoe Gym on **Wednesday, March 8th from 4:30-7:00** in the gym. Packets are now available to pick up in the office.



CREATIVE CORNER



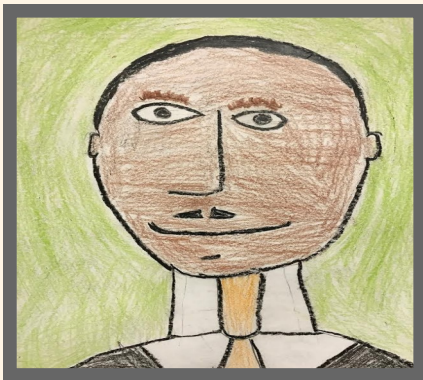
Imagination



Creativity



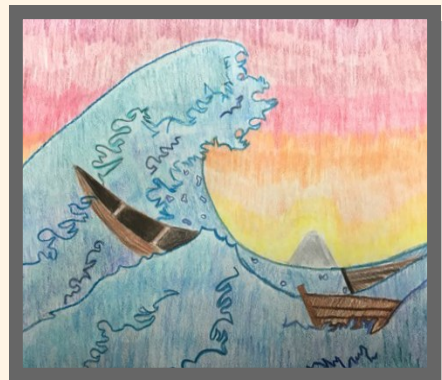
Innovation



Kayeson Marshall ~ 2nd Grade



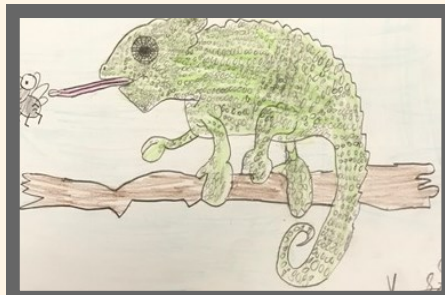
Briana Rios ~ 7th Grade



Claudia Huerta ~ 8th Grade



Conner Reed ~ 7th Grade



Leo Smith ~ 7th Grade



April Buensuceso ~ 8th Grade



CREATIVE CORNER



I have a dream....

by Brooklyn

In my opinion Dr. Martin Luther King Jr. was an outstanding citizen. My first reason is that he was a skillful speaker. For example Dr. Martin Luther King Jr. in 1963 Washington was Dr. King's famous speech "I Have a Dream". At age 14 he won a speech contest. Another reason is Dr. King was a peaceful thinker. For example Dr. King went to college for 20 years and became a PhD. Also Martin when he was still in college learned from Gandhi and Hegel. Lastly, Martin Luther King Jr. stopped segregation. For example Dr. King led a Bus movement with Rosa Parks in 1955-1956. Also 1963 Dr. Martin Luther King Jr. did his famous speech "I Have a Dream" in Washington DC and it says "I Have a Dream that children will one day live in a nation where they not be judged by the color of skin but by the content of their character." Clearly Dr. King was an outstanding citizen.

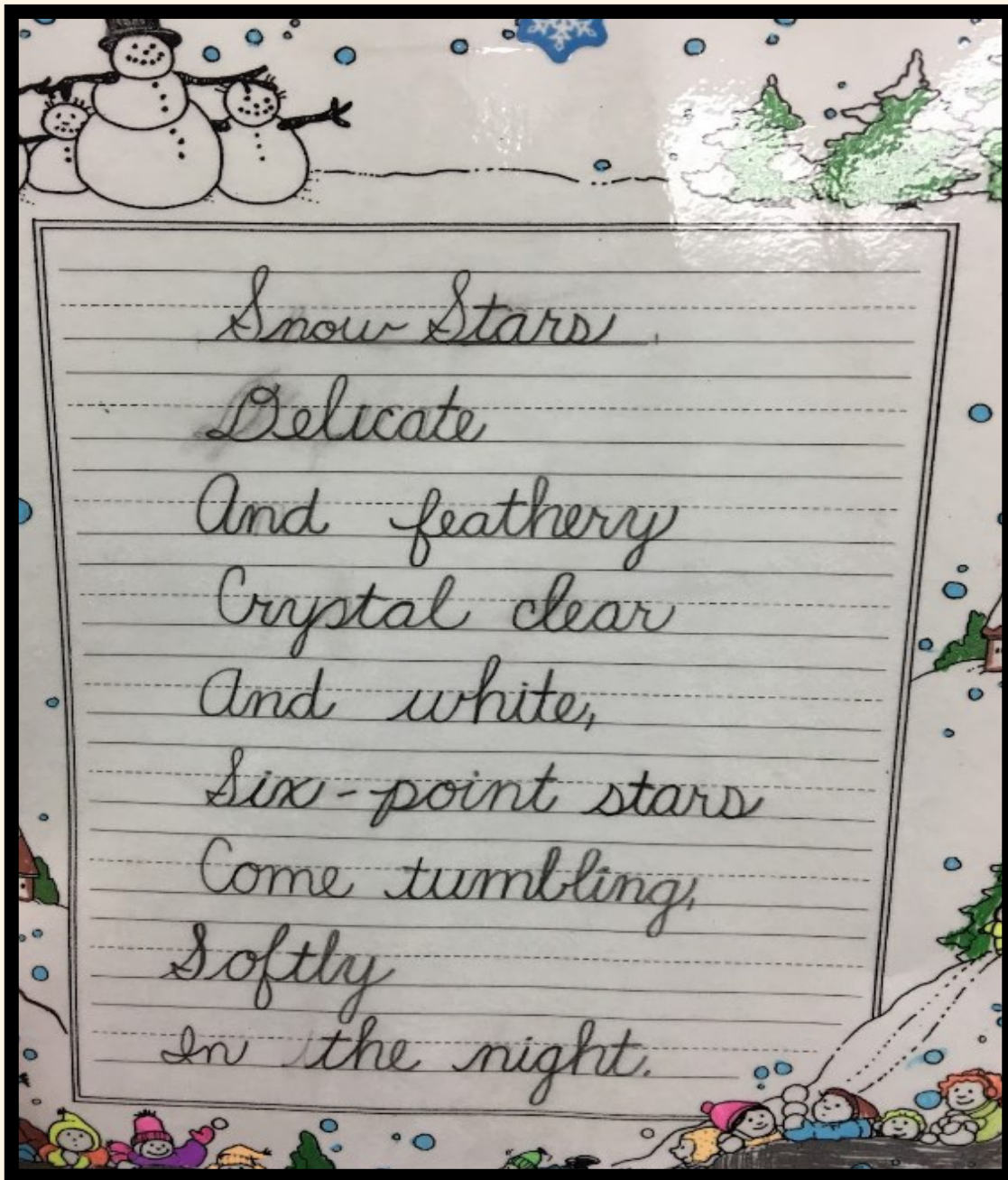


Written by Brooklyn Castro

Mrs. Wingfield's Class

2nd Grade

CREATIVE CORNER



~Written by Tram Huynh ~

Mrs. Uphsaw's Class

4th Grade



ODYSSEY OF THE MIND



Mistletoe has 3 amazing teams heading off to the Odyssey of the Mind regional competition on Saturday, March 3rd @ Mountain View School. Each team has been working together using their critical thinking skills and creativity to present a solution to a given challenge. GO Team Mistletoe!!

Parent C L U B



Father/Daughter Dance

Saturday, March 4th
6:00 - 8:00 p.m.

Mistletoe Gym

Academic Awards Assemblies

Tuesday, March 21st

- ◇ Kinder - 1st Grade ~ 10:00 a.m.
- ◇ 2nd - 3rd Grade ~ 8:30 a.m.
- ◇ 6th Grade & Mrs. Post ~ 1:30 p.m.

Thursday, March 23rd

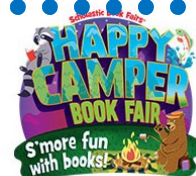
- ◇ 4th - 5th Grade ~ 8:30 a.m.
- ◇ 7th - 8th Grade ~ 1:00 p.m.



Mother/Son Skate Night

Sunday, March 5th
4:45-6:45

Viking Skate Country



BOOK FAIR

March 13th ~ 17th

Hours for Book Fair

13th - 16th ~ 7:30-4:30

March 17th ~ 7:30-2:30



Parent/Teacher Conferences will be held during the week of March 13th-17th. Report cards and student progress will be discussed during this time. Students will have **MINIMUM DAYS ALL WEEK** during these dates to allow extra time for teachers to meet with parents. Please be sure to secure your time with your child's teacher.



Come Join Us For

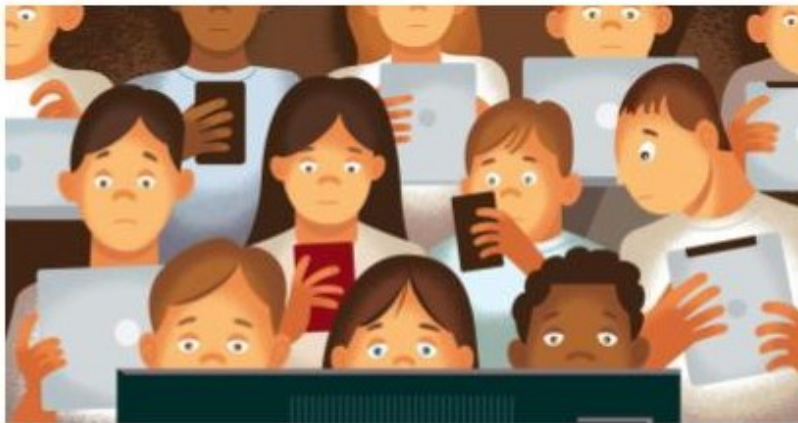


A Parent's Guide to Cyber Safety:

Keeping Your Kids Safe in an Electronic World

When:
Monday, March 20
4:00-5:00 PM
Room 500

Topics to be
Covered



- Internet Safety
- Cyberbullying
- Student Privacy
- Social Media & Kids
- Digital Citizenship

Order a Yearbook Today! It's Not Too Late.

Don't miss out.

Price: \$16.00 Yearbook Only
\$17.00 – \$25.00 custom

How to Order: Fill out order form or order
online @ ybpay.lifetouch.com

Deadline: ID Code: 7107817

© Lifetouch National School Studios, Inc.

Fathers, Mothers, and All Adults Taking Care of Children:

Discipline That Works

Free
Group!



Free
Child
Care!

Triple P Based Help Addressing Children of All Age Groups

Funded by: Shasta
County Office of
Education, Bridges to
Success Program,
Shasta County SELPA,
Health and Human
Services/Cal Works &



Drop in Format: Come once or come often!

Every Wednesday 6:00-7:30 PM

NOTE NEW LOCATION!!!
Bridges To Success Cottage
1544 Magnolia Street
Redding 96001

Call:
225-0350
For more
Information

School Accountability Report Card (SARC)

What is a SARC? A School Accountability Report Card (SARC) is a federal- and state-required report card which gives parents and the community important information about each public school. The SARC contains many important facts about your child's school:



Mistletoe Elementary

California Department of Education School Accountability Report Card Reported Using Data from the 2015-16 School Year

By February 1 of each year, every school in California is required by statute to publish a School Accountability Report Card (SARC). The SARC contains information about the condition and performance of each California public school. Under the Local Control Funding Formula (LCFF) school state accountability (SARC) are required to prepare a Local Control Accountability Plan (LCAP), which describes how they intend to meet annual school-specific goals for all pupils, with specific strategies to address state and local priorities. Additionally, data reported in the LCAP is to be consistent with data reported in the SARC.

- For more information about SARC requirements, see the California Department of Education (CDE) SARC Web page at <http://www.cde.ca.gov/ta/tg/sarc/>.
- For more information about the LCFF or LCAP, see the CDE LCFF Web page at <http://www.cde.ca.gov/ta/tg/lcff/>.
- For additional information about the school, parent/guardian, and community members should contact the school principal or the district office.

DataQuest

DataQuest is an online data tool located on the [CDE DataQuest Web page](http://www.cde.ca.gov/ta/tg/sarc/) that contains additional information about the school and components of the school to the district and the county. Specifically, DataQuest is a dynamic system that provides reports for accountability (e.g., test data, enrollment, high school graduates, deposits, course completions, staffing, and data regarding English learners).

Internet Access

Internet access is available at public libraries and other locations that are publicly accessible (e.g., the California State Library). Access to the Internet at libraries and public locations is generally provided on a first-come, first-served basis. Otherwise, students may include the hours of operation, the length of time that a workstation may be used (depending on availability), the types of software programs available on a workstation, and the ability to print documents.



Heather Armelino, Principal

Principal, Mistletoe Elementary

About Our School

The Mistletoe staff is a dedicated group of professionals who share the core belief that every child can succeed and reach higher. At Mistletoe, our school community enjoys a strong sense of family, commitment, and appreciation for the school joy of learning. We provide the academic and College and Career readiness climate along with the individualized learning experiences to meet the needs. Students are taught the knowledge and skills necessary to think, reason, and perform at increasingly higher levels. We have experienced combined increases in student performance (SIS) resulting in a 100% School Grade of 3.5. But our goal remains the same: to apply innovation, expertise, and "heart" in ensuring that students experience increased achievement and personal success.

Our school population is increasingly diverse, as well as multiculturally diverse. Our academic, social and performance arts, athletics, and activities programs reflect our continued desire to challenge and develop each student at the highest levels from kindergarten through eighth grade. Our multi-grade program is designed to prepare students for the increasing academic demands of secondary school, allowing for all students to participate in rigorous, stimulating activities designed to promote creative thinking and collaborative design. Students are motivated in a small school personalized learning environment that is a response to address needs and greatly contributes to a successful transition to high school.

The school's Academic Performance Index (API) has grown steadily to an API of 899 in spring 2015. Mistletoe staff members have worked hard in their professional and/or career in leadership positions amongst their peers that reflects their commitment to the belief that children can succeed, and their extraordinary determination to not allow a child to fall or feel through the cracks. Because of the level of service, Mistletoe enjoys an excellent reputation.

Mistletoe made school Mistletoe STAR Institute, a California National School-to-Work - Taking Center Stage model program (2008, 2010, 2014), a California Designated School and has received the 100% High Academic Achievement Award multiple times as a result of excellent student achievement scores. These awards reflect the excellent quality of education our students receive as well as our school mission to create an encouraging, high-level learning environment and promote the success in a changing world.

—Heather Armelino, Principal

Contact

Mistletoe Elementary
225 Mistletoe Ln.
Redding, CA 96001-0000

- * Principal message
- * Information on Parental Involvement
- * Enrollment and Ethnicity
- * Safety Plan
- * Class Sizes
- * School Facilities - Conditions/Improvements
- * Teacher and Staff Information
- * Curriculum and Instructional Materials
- * School Finances
- * Types of Services Funded
- * Teacher & Administrative Salaries
- * Student Performance - Test Results
- * Academic Achievements
- * School Instruction and Leadership
- * Our Mission Statement

View our school's SARC at our school website: www.mistletoe.eesd.net. Then click on School Accountability Report Card (SARC) on the left side of the screen. You are welcome to visit or call your school office or the District Office to obtain a paper copy of the SARC.