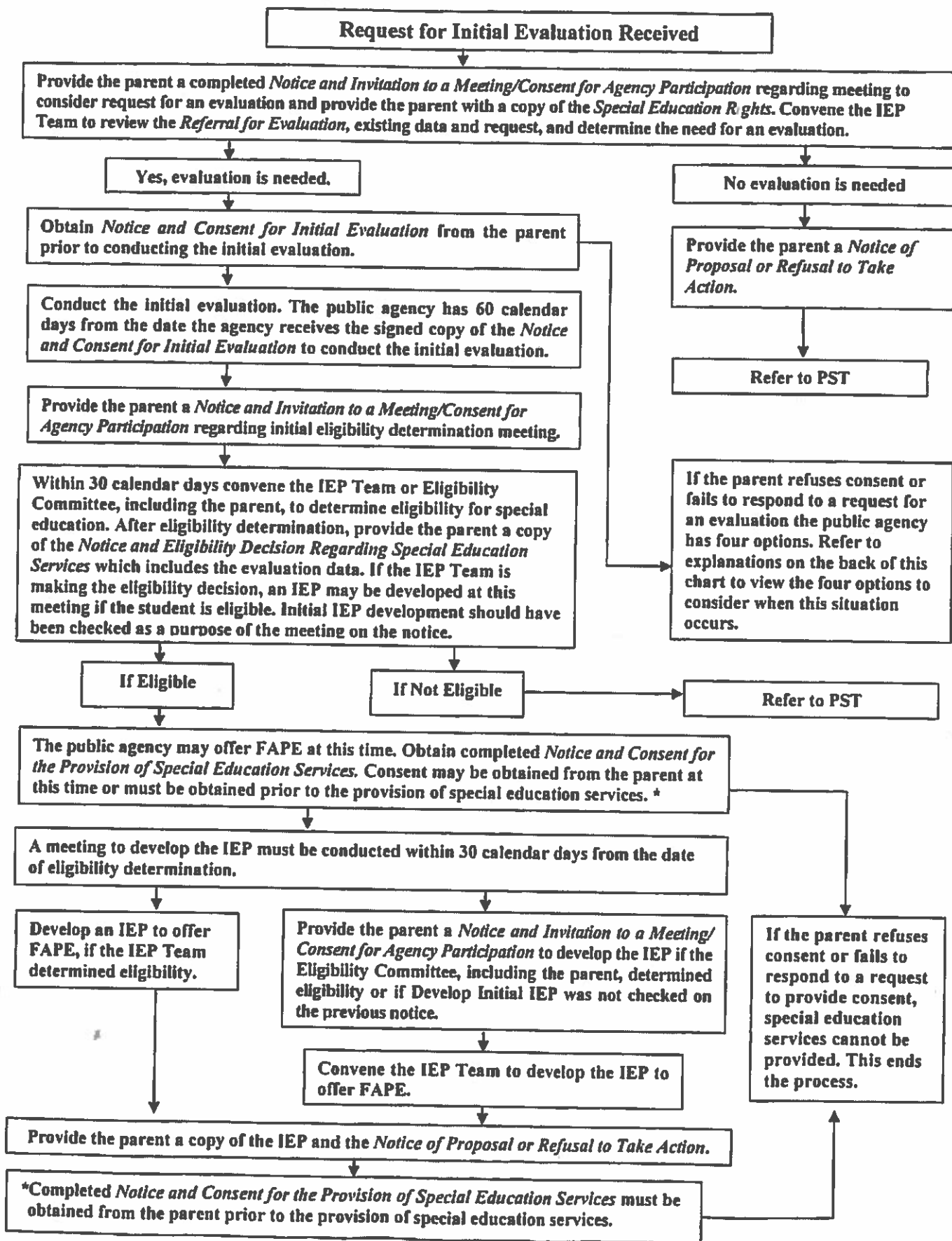


**Process Chart 1
SPECIAL EDUCATION PROCESS
Referral Through IEP Implementation**



Definitions/Examples of Special Education Services, Supplementary Aids and Services, Program Modifications, Accommodations Needed for Assessments, Related Services, Assistive Technology, Support for Personnel						
Special Education Services	Supplementary Aids and Services	Program Modifications	Accommodations Needed for Assessments	Related Services	Assistive Technology	Support for Personnel
Includes a detailed description of the content, methodology, and delivery of instruction to address the unique needs of the student that result from his/her disability.	Accommodations that consist of aids, services, and other supports.	Changes to the content of the curriculum due to the unique needs arising from the student's disability. This includes... 1. Alabama Extended Standards 2. Adapted Curriculum	Should be completed for all students taking classroom and district-wide assessments.	Services which are necessary for the student to benefit from Special Education.	Devices and/or services provided through the IEP.	Training or support provided to staff regarding the student's specific need.
<ul style="list-style-type: none"> ✓ Second delivery of instruction ✓ Small group instruction ✓ Special ed teacher will collaborate with general ed teacher 	<ul style="list-style-type: none"> ✓ Behavior Plan ✓ Tutoring ✓ Adult assistance ✓ Peer helper ✓ Point sheet ✓ Main idea summaries ✓ Pre-written notes or study guides ✓ Preteaching ✓ Reteaching ✓ Assigned seating 		<ul style="list-style-type: none"> ✓ Additional time ✓ Organizational aids ✓ Audio tapes ✓ Large print ✓ Braille ✓ Calculators ✓ Special seating ✓ Reformatting ✓ Alternate setting ✓ Test read ✓ One on one ✓ Interpreter ✓ Scribe 	<ul style="list-style-type: none"> ✓ Occupational Therapy ✓ Physical Therapy ✓ Orientation and Mobility ✓ Speech Therapy ✓ School Counseling* ✓ Music Therapy ✓ Health Services 	<ul style="list-style-type: none"> ✓ Voice output device ✓ Switches ✓ Special keyboards ✓ Special toys ✓ Word processor ✓ Electronic books ✓ Talking calculators ✓ Adapted chair ✓ Stander 	<ul style="list-style-type: none"> ✓ Behavior/MCS training ✓ Content area intervention training ✓ Assistive Technology Training
<p>THIS SECTION MUST BE COMPLETED FOR ALL SPECIAL EDUCATION STUDENTS.</p>	<p>Accommodations alone do NOT constitute Special Education services.</p>	<p>This section should NOT include accommodations for classroom, district, or state assessments.</p>	<p>In order for a specific accommodation to be allowed on State and district tests, it MUST be provided on an on-going basis for classroom tests.</p>	<p>Special Transportation is also a related service but is addressed on the second page of the profile.</p> <p>*Include the school counselor in the IEP meeting if school counseling is being addressed.</p>		