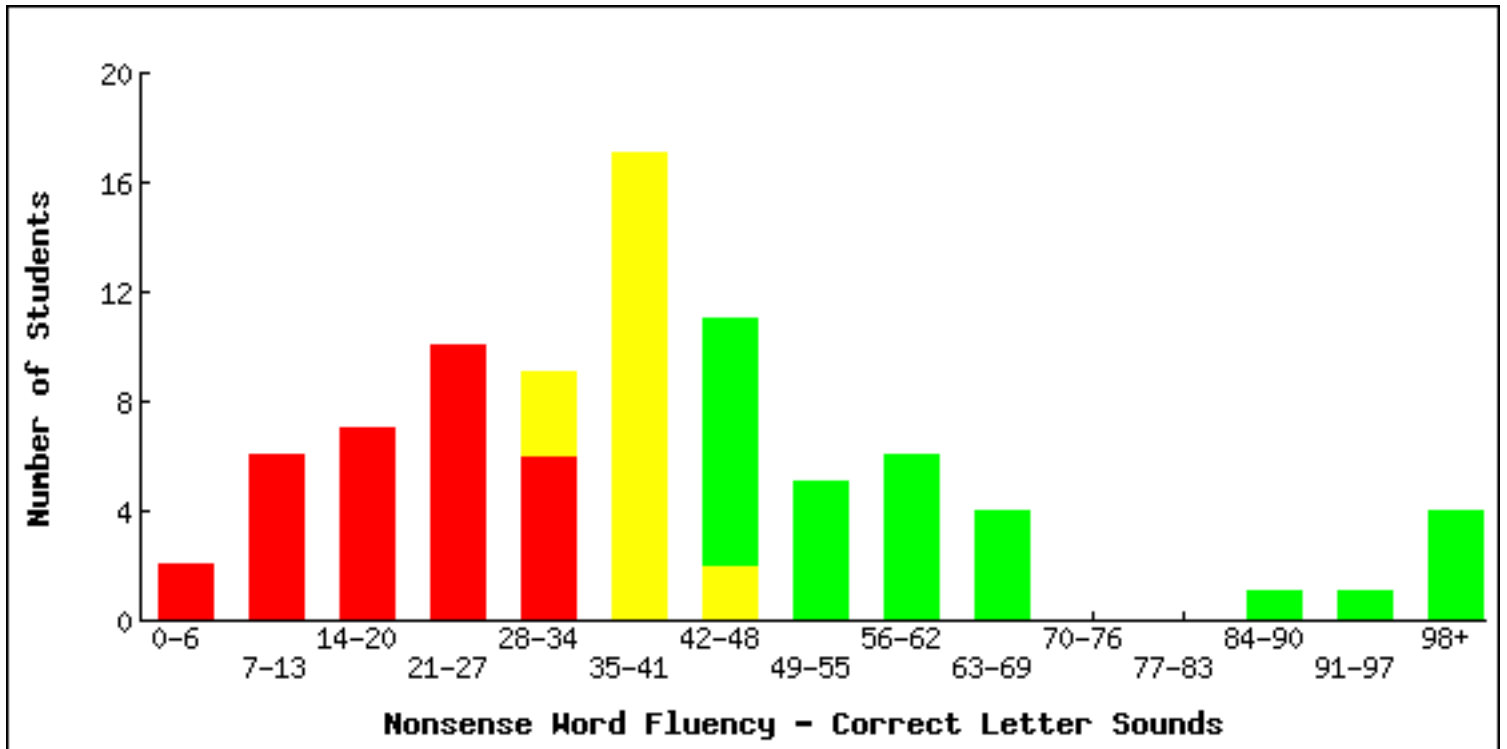


Histogram - DIBELS Next

District: Mobile County Schools
 School: Maryvale Elementary
 Grade: First Grade
 Year: 2016-2017
 Period: Middle
 Measure: Nonsense Word Fluency - Correct Letter Sounds
 Need for Support: Former Goals



Likely to Need Intensive Support
 37% (n=31)

Likely to Need Strategic Support
 27% (n=22)

Likely to Need Core Support
 36% (n=30)

- Score range: 0-32
- Intensive Support

- Score range: 33-42
- Strategic Support

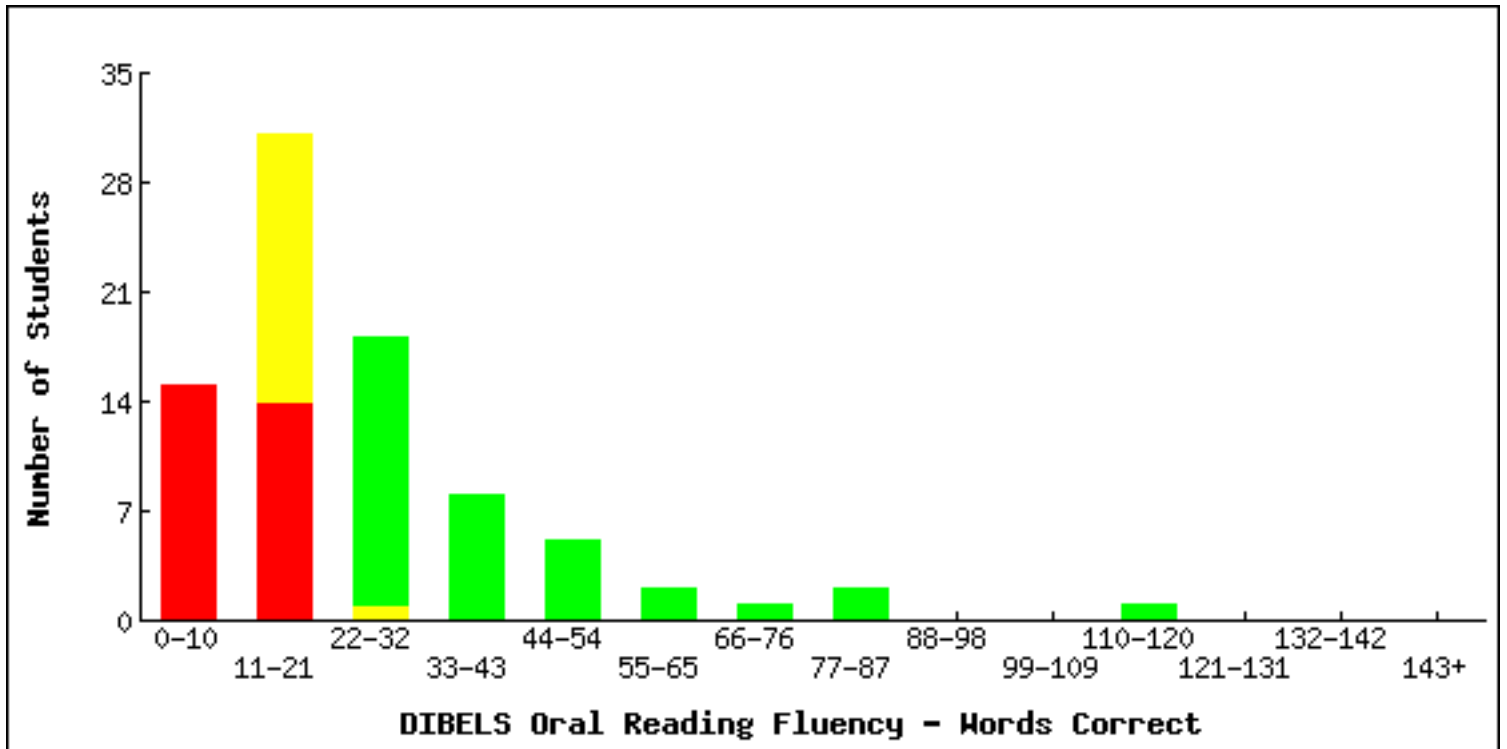
- Score range: 43-143
- Core Support

Split Bars

Split bars are used when the cutoff scores occur in the middle of a score range. The number of students is indicated by the size of the part.

Histogram - DIBELS Next

District: Mobile County Schools
 School: Maryvale Elementary
 Grade: First Grade
 Year: 2016-2017
 Period: Middle
 Measure: DIBELS Oral Reading Fluency - Words Correct
 Need for Support: Former Goals



Likely to Need Intensive Support
 35% (n=29)

Likely to Need Strategic Support
 22% (n=18)

Likely to Need Core Support
 43% (n=36)

- Score range: 0-15
- Intensive Support

- Score range: 16-22
- Strategic Support

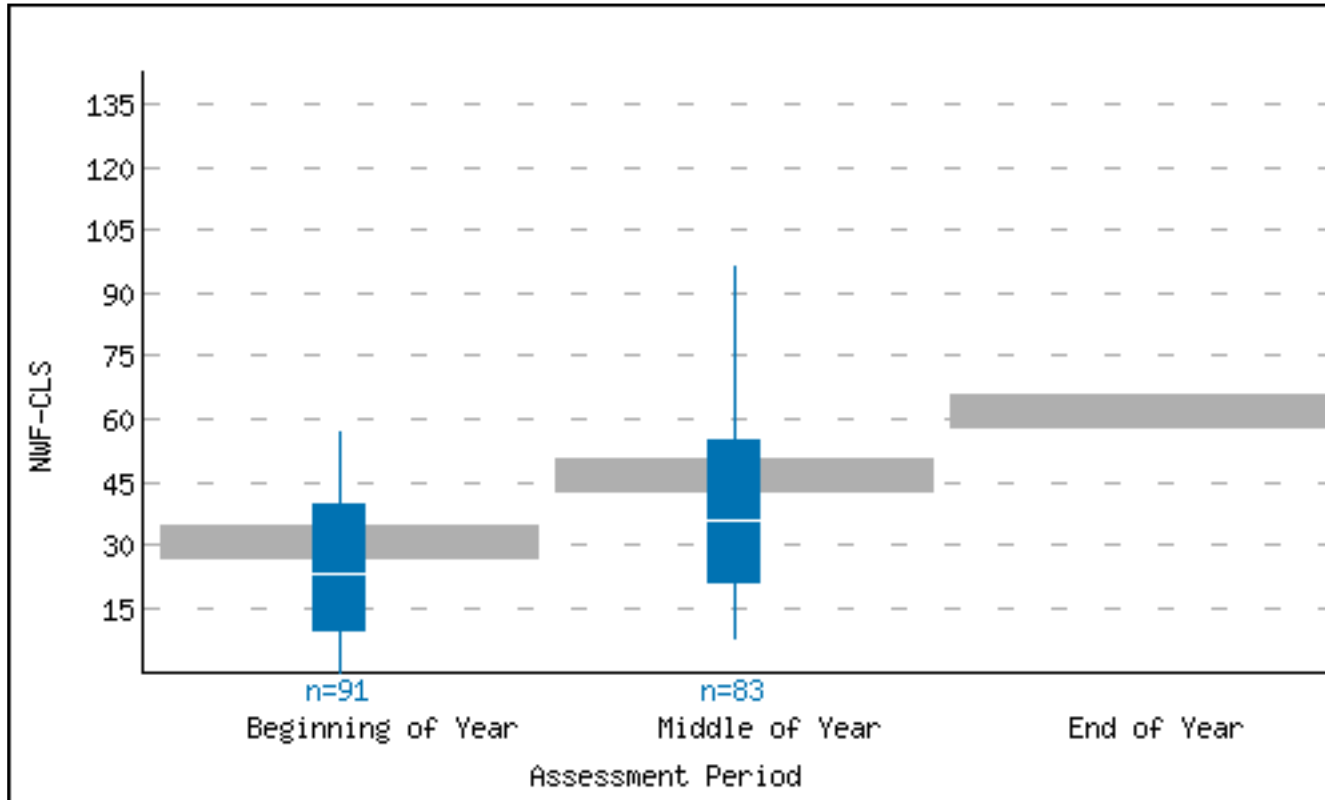
- Score range: 23-250
- Core Support

Split Bars

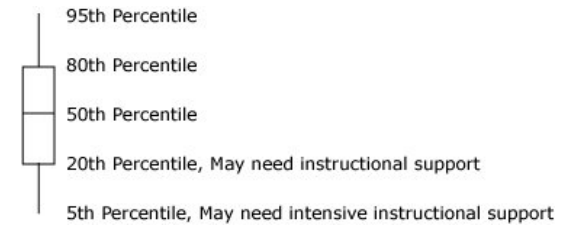
Split bars are used when the cutoff scores occur in the middle of a score range. The number of students is indicated by the size of the part.

Yearly Box Plot - DIBELS Next

District: Mobile County Schools
 School: Maryvale Elementary
 Grade: First Grade
 Year: 2016-2017
 Measure: Nonsense Word Fluency - Correct Letter Sounds
 Need For Support: Former Goals



	Beginning	Middle	End
2016	n=91	n=83	n=0
95th %tile Score	57	96	0
80th %tile Score	40	55	0
50th %tile Score	23	36	0
20th %tile Score	10	21	0
5th %tile Score	0	8	0

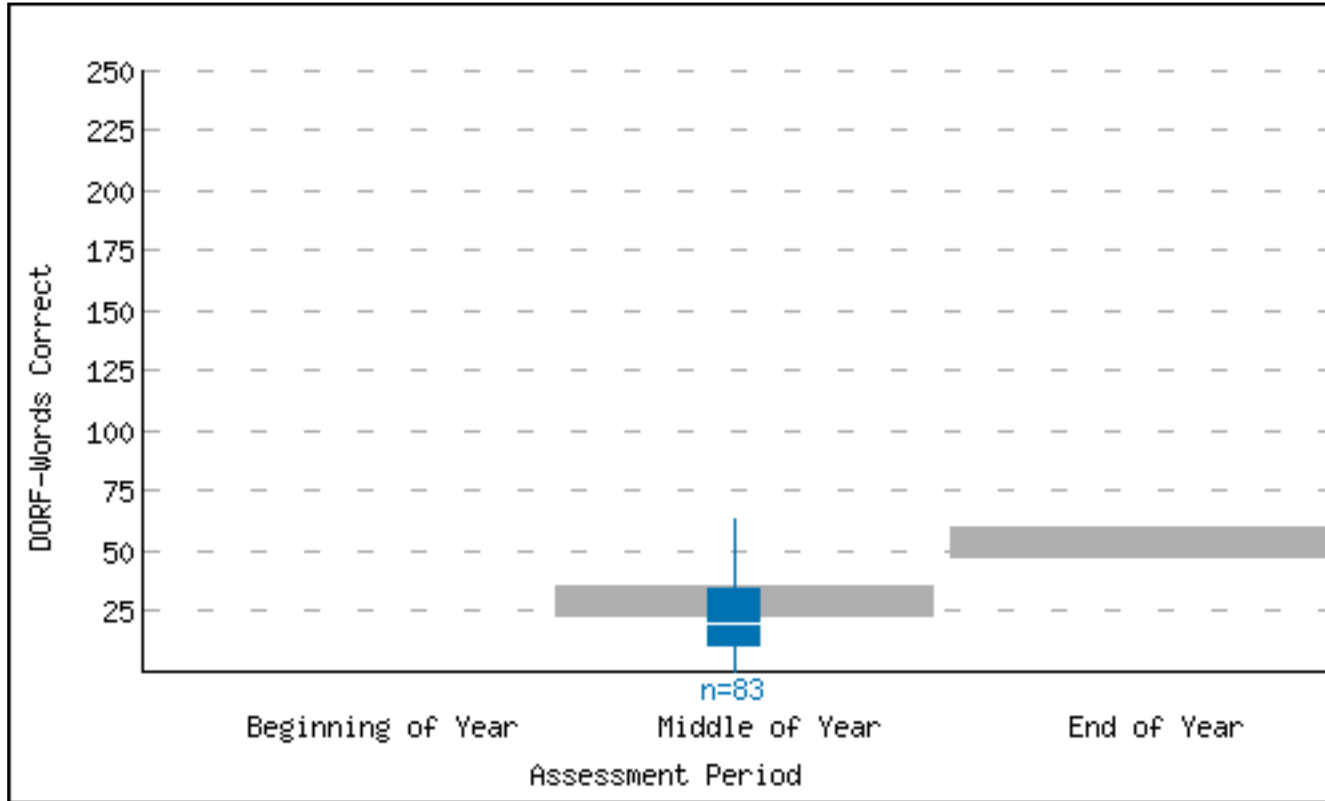


Benchmark Goals

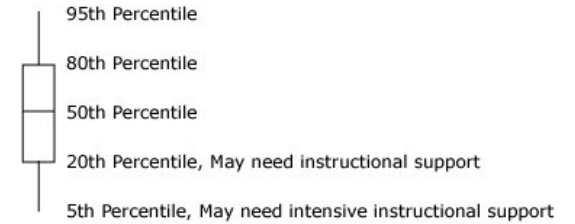
- Benchmark Goal for NWF-CLS is 27 at the Beginning of First Grade
- Benchmark Goal for NWF-CLS is 43 at the Middle of First Grade
- Benchmark Goal for NWF-CLS is 58 at the End of First Grade

Yearly Box Plot - DIBELS Next

District: Mobile County Schools
 School: Maryvale Elementary
 Grade: First Grade
 Year: 2016-2017
 Measure: DIBELS Oral Reading Fluency - Words Correct
 Need For Support: Former Goals



	Beginning	Middle	End
2016	n=0	n=83	n=0
95th %tile Score	0	63	0
80th %tile Score	0	34	0
50th %tile Score	0	19	0
20th %tile Score	0	11	0
5th %tile Score	0	0	0



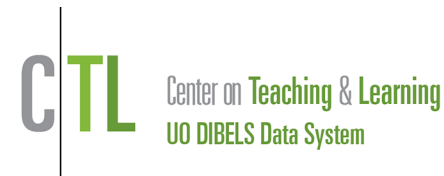
Benchmark Goals

 Benchmark Goal for DORF-Words Correct is 23 at the Middle of First Grade

 Benchmark Goal for DORF-Words Correct is 47 at the End of First Grade

Class List - DIBELS Next

District: Mobile County Schools
 School: Maryvale Elementary
 Grade: First Grade - Middle
 Year: 2016-2017
 Need for Support: Former Goals
 Class: 1 Chastang



NFS: Need for Support **NWF:** Nonsense Word Fluency **CLS:** Nonsense Word Fluency - Correct Letter Sounds **WWR:** Nonsense Word Fluency - Whole Words Read
DORF: DIBELS Oral Reading Fluency **Words Correct:** DIBELS Oral Reading Fluency - Words Correct **Accuracy:** DIBELS Oral Reading Fluency - Accuracy
Retell: DIBELS Oral Reading Fluency - Retell **Retell Quality:** DIBELS Oral Reading Fluency - Retell Quality of Response **Composite:** DIBELS Composite Score

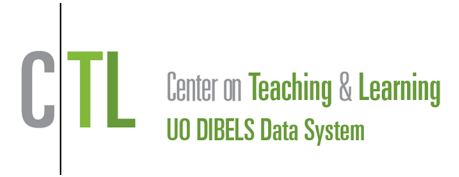
Student	Student ID	NWF				DORF						Composite	
		CLS	NFS	WWR	NFS	Words Correct	NFS	Accuracy	NFS	Retell	Retell Quality	Score	NFS
Benchmark Goals		43		8		23		78%				130	
Davis, MyQuell	1971305956	17	■ Intensive	4	■ Strategic	6	■ Intensive	50%	■ Intensive			29	■ Intensive
Ford, Kem	1971862212	12	■ Intensive	0	■ Intensive	9	■ Intensive	53%	■ Intensive			29	■ Intensive
Campbell, Jakorey	1971303613	12	■ Intensive	0	■ Intensive	14	■ Intensive	56%	■ Intensive			40	■ Intensive
Southall, Cleo	1971845571	16	■ Intensive	1	■ Intensive	11	■ Intensive	58%	■ Intensive			42	■ Intensive
Finley, JaKayla	1971307838	31	■ Intensive	5	■ Strategic	12	■ Intensive	48%	■ Intensive			48	■ Intensive
Austin, Malachi	1970453856	24	■ Intensive	4	■ Strategic	16	■ Strategic	70%	■ Strategic			82	■ Intensive
Banks, Jaylen	1971770068	21	■ Intensive	10	■ Core	15	■ Intensive	68%	■ Strategic			84	■ Intensive
Reed, Jayden	1971770225	32	■ Intensive	12	■ Core	22	■ Strategic	73%	■ Strategic	11	1	110	■ Strategic
Withers, Kenmira	1971924400	34	■ Strategic	12	■ Core	18	■ Strategic	75%	■ Strategic			114	■ Strategic
Douglas, Alayja	1971790769	43	■ Core	14	■ Core	21	■ Strategic	75%	■ Strategic	17	1	128	■ Strategic
Pritchett, Aniyah	1967538776	39	■ Strategic	12	■ Core	29	■ Core	74%	■ Strategic	7	1	130	■ Core
Jackson, Jamaycia	1970883557	38	■ Strategic	14	■ Core	25	■ Core	78%	■ Core	3	1	133	■ Core
Moore, Shalibia	1971768815	43	■ Core	6	■ Strategic	38	■ Core	79%	■ Core	4	1	143	■ Core
Mosley, Josiah	1971317662	60	■ Core	16	■ Core	24	■ Core	77%	■ Strategic	12	1	156	■ Core
Burks, Sijuan		51	■ Core	14	■ Core	28	■ Core	88%	■ Core	3	1	167	■ Core
Pritchett, Jonathan		55	■ Core	12	■ Core	31	■ Core	89%	■ Core	9	1	178	■ Core
Smith, Zameria	1971783392	35	■ Strategic	3	■ Strategic	55	■ Core	95%	■ Core	25	2	185	■ Core
Watson, Jamel	1971326291	57	■ Core	20	■ Core	34	■ Core	87%	■ Core	1	1	185	■ Core
Harris, Tyrese	1971774623	7	■ Intensive	0	■ Intensive	0	■ Intensive						
Jones, Derrick	1971047749	8	■ Intensive	0	■ Intensive	0	■ Intensive						
Mean:		31.8		8.0		20.4		71.8%		9.2	1.1	110.2	

Legend ■ Core Support ■ Strategic Support ■ Intensive Support

Students not meeting goals? Visit [Big Ideas in Beginning Reading](#) to learn more about each literacy skill assessed and receive valuable tips on how to teach those skills.

Class List - DIBELS Next

District: Mobile County Schools
 School: Maryvale Elementary
 Grade: First Grade - Middle
 Year: 2016-2017
 Need for Support: Former Goals
 Class: 1 Heningburg



NFS: Need for Support **NWF:** Nonsense Word Fluency **CLS:** Nonsense Word Fluency - Correct Letter Sounds **WWR:** Nonsense Word Fluency - Whole Words Read
DORF: DIBELS Oral Reading Fluency **Words Correct:** DIBELS Oral Reading Fluency - Words Correct **Accuracy:** DIBELS Oral Reading Fluency - Accuracy
Retell: DIBELS Oral Reading Fluency - Retell **Retell Quality:** DIBELS Oral Reading Fluency - Retell Quality of Response **Composite:** DIBELS Composite Score

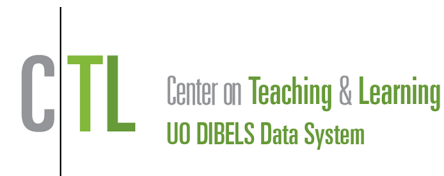
Student	Student ID	NWF				DORF						Composite	
		CLS	NFS	WWR	NFS	Words Correct	NFS	Accuracy	NFS	Retell	Retell Quality	Score	NFS
Benchmark Goals		43		8		23		78%				130	
Taylor, Cortez		16	Intensive	1	Intensive	15	Intensive	58%	Intensive			46	Intensive
Thomas, La'Bryan	1971801087	8	Intensive	2	Intensive	19	Strategic	63%	Intensive			55	Intensive
Seals, Calvin	1970652895	36	Strategic	4	Strategic	15	Intensive	65%	Intensive			87	Intensive
Johnson, Andrew	1971768237	31	Intensive	4	Strategic	18	Strategic	72%	Strategic			97	Intensive
McDonald, Tristen	1970653224	24	Intensive	5	Strategic	23	Core	74%	Strategic			102	Strategic
Malone, Marcus	1971805625	38	Strategic	11	Core	18	Strategic	69%	Strategic			105	Strategic
Moran, Keionna	1970467823	35	Strategic	9	Core	23	Core	70%	Strategic			105	Strategic
Williams, Stevanian	1971018583	36	Strategic	7	Strategic	24	Core	69%	Strategic			105	Strategic
Dixon, Deshaun	1969573599	43	Core	0	Intensive	25	Core	69%	Strategic			106	Strategic
Moore, Anastasio	1970467732	36	Strategic	0	Intensive	21	Strategic	75%	Strategic			107	Strategic
Thomas, Tytianna	1971324411	26	Intensive	10	Core	44	Core	77%	Strategic	17	1	136	Core
Seltzer, Tamorah	1971786437	21	Intensive	4	Strategic	38	Core	86%	Core	13	1	137	Core
Watson, Kaleb	1970738801	36	Strategic	8	Core	34	Core	83%	Core			146	Core
Tate, Dormani	1971788250	63	Core	21	Core	33	Core	73%	Strategic			161	Core
Brown, Ja'vita	1971302631	59	Core	14	Core	41	Core	80%	Core	11	1	176	Core
Portlock, Jazaria	1971021884	39	Strategic	13	Core	47	Core	90%	Core	8	1	179	Core
Ward, Reginald	1971786056	60	Core	17	Core	53	Core	80%	Core			192	Core
Snell, Jocelyn	1970718266	64	Core	21	Core	32	Core	89%	Core			197	Core
Howard, Ethan	1971311798	60	Core	20	Core	74	Core	99%	Core			252	Core
Ballon, Sky	1971807233	0	Intensive	0	Intensive	0	Intensive						
Mean:		36.5		8.6		29.9		75.8%		12.2	1.0	131.1	

Legend ■ Core Support ■ Strategic Support ■ Intensive Support

Students not meeting goals? Visit [Big Ideas in Beginning Reading](#) to learn more about each literacy skill assessed and receive valuable tips on how to teach those skills.

Class List - DIBELS Next

District: Mobile County Schools
 School: Maryvale Elementary
 Grade: First Grade - Middle
 Year: 2016-2017
 Need for Support: Former Goals
 Class: 1 Lett



NFS: Need for Support **NWF:** Nonsense Word Fluency **CLS:** Nonsense Word Fluency - Correct Letter Sounds **WWR:** Nonsense Word Fluency - Whole Words Read
DORF: DIBELS Oral Reading Fluency **Words Correct:** DIBELS Oral Reading Fluency - Words Correct **Accuracy:** DIBELS Oral Reading Fluency - Accuracy
Retell: DIBELS Oral Reading Fluency - Retell **Retell Quality:** DIBELS Oral Reading Fluency - Retell Quality of Response **Composite:** DIBELS Composite Score

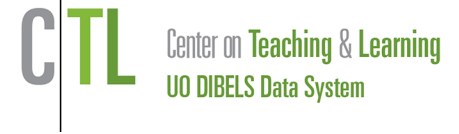
Student	Student ID	NWF				DORF						Composite	
		CLS	NFS	WWR	NFS	Words Correct	NFS	Accuracy	NFS	Retell	Retell Quality	Score	NFS
Benchmark Goals		43		8		23		78%				130	
Williams, Alexander	1969549953	22	Intensive	1	Intensive	7	Intensive	44%	Intensive			30	Intensive
Williams, Makiyra	1971842818	18	Intensive	0	Intensive	10	Intensive	56%	Intensive			42	Intensive
Jackson, Jeremiah	1971312366	20	Intensive	1	Intensive	8	Intensive	57%	Intensive			43	Intensive
Todd, Carlon	1970710792	21	Intensive	2	Intensive	13	Intensive	57%	Intensive			50	Intensive
Lucious, Daniel	1971315286	18	Intensive	4	Strategic	13	Intensive	62%	Intensive			61	Intensive
Campbell, Jakerstin		37	Strategic	2	Intensive	12	Intensive	57%	Intensive			65	Intensive
Bishop, Torrence	1971799380	32	Intensive	11	Core	15	Intensive	63%	Intensive			84	Intensive
Robinson, Erik	1970471312	45	Core	11	Core	17	Strategic	65%	Intensive	2	1	105	Strategic
Lewis, Ramon	1970465314	49	Core	16	Core	14	Intensive	67%	Intensive			111	Strategic
Mosley, Christopher	1971317670	33	Strategic	5	Strategic	17	Strategic	77%	Strategic	3	1	111	Strategic
Brown, Dameonna	1971302623	47	Core	16	Core	18	Strategic	69%	Strategic			119	Strategic
Orange, DeMarco		47	Core	14	Core	19	Strategic	73%	Strategic			124	Strategic
Jordan, Khaliah	1971786874	37	Strategic	9	Core	29	Core	76%	Strategic	5	1	125	Strategic
Freeman, Ja'Leah	1971863319	48	Core	16	Core	19	Strategic	76%	Strategic			133	Core
Lewis, BoVaire'	1970465306	39	Strategic	11	Core	25	Core	83%	Core	6	2	143	Core
Jones, Camari	1971313182	86	Core	16	Core	18	Strategic	64%	Intensive			146	Core
Brown, Shaniya	1971788771	38	Strategic	8	Core	30	Core	86%	Core	17	2	150	Core
Harper, E'monie	1971310212	42	Strategic	14	Core	26	Core	84%	Core	4	1	150	Core
Gamble, Brandon	1971308638	66	Core	23	Core	44	Core	90%	Core	18	3	213	Core
Kitt, Bentley	1971313950	92	Core	25	Core	40	Core	85%	Core	7	2	225	Core
Pritchett, Calie	1970470298	105	Core	27	Core	81	Core	90%	Core	17	4	293	Core
Harris-Nettles, Cortez	1971310410	11	Intensive	0	Intensive	0	Intensive						
Mean:		43.3		10.5		21.6		70.5%		8.8	1.9	120.1	

Legend ■ Core Support ■ Strategic Support ■ Intensive Support

Students not meeting goals? Visit [Big Ideas in Beginning Reading](#) to learn more about each literacy skill assessed and receive valuable tips on how to teach those skills.

Class List - DIBELS Next

District: Mobile County Schools
 School: Maryvale Elementary
 Grade: First Grade - Middle
 Year: 2016-2017
 Need for Support: Former Goals
 Class: 1 Young



NFS: Need for Support **NWF:** Nonsense Word Fluency **CLS:** Nonsense Word Fluency - Correct Letter Sounds **WWR:** Nonsense Word Fluency - Whole Words Read
DORF: DIBELS Oral Reading Fluency **Words Correct:** DIBELS Oral Reading Fluency - Words Correct **Accuracy:** DIBELS Oral Reading Fluency - Accuracy
Retell: DIBELS Oral Reading Fluency - Retell **Retell Quality:** DIBELS Oral Reading Fluency - Retell Quality of Response **Composite:** DIBELS Composite Score

Student	Student ID	NWF				DORF						Composite	
		CLS	NFS	WWR	NFS	Words Correct	NFS	Accuracy	NFS	Retell	Retell Quality	Score	NFS
Benchmark Goals		43		8		23		78%				130	
Paige, Jacobi	1968358489	16	Intensive	2	Intensive	8	Intensive	42%	Intensive			26	Intensive
Mitchell, Aryona		22	Intensive	0	Intensive	11	Intensive	50%	Intensive			35	Intensive
Claiborne, Reginald	1968343507	23	Intensive	7	Strategic	8	Intensive	47%	Intensive			38	Intensive
Davis, Harmony	1970797039	39	Strategic	1	Intensive	5	Intensive	38%	Intensive			45	Intensive
Kidd, Deshaun	1971806904	36	Strategic	5	Strategic	12	Intensive	52%	Intensive	2		55	Intensive
Griggs, Dominick	1970461131	46	Core	12	Core	13	Intensive	50%	Intensive	5	1	73	Intensive
King, Khmani	1971686884	36	Strategic	4	Strategic	16	Strategic	59%	Intensive	2		76	Intensive
Harrison, E'magine	1970797682	33	Strategic	8	Core	18	Strategic	62%	Intensive	2	1	85	Intensive
Gulley, Horacio	1971785041	53	Core	16	Core	10	Intensive	59%	Intensive			99	Intensive
Ball, Tori	1971300759	28	Intensive	6	Strategic	24	Core	73%	Strategic	3	1	102	Strategic
Heathco, Tristan	1967848456	28	Intensive	8	Core	17	Strategic	74%	Strategic	10	1	103	Strategic
Brown, Jere'Maury	1971789878	43	Core	15	Core	19	Strategic	76%	Strategic	1	1	127	Strategic
Lett, Gabrielle	1971314677	56	Core	15	Core	29	Core	69%	Strategic	8	1	138	Core
Goodwin, Alana	1970460844	68	Core	9	Core	32	Core	73%	Strategic	5	2	153	Core
Johnson, Demarcus	1971312911	42	Strategic	7	Strategic	45	Core	82%	Core	5	1	156	Core
Williams, Destiny	1970476212	52	Core	15	Core	34	Core	87%	Core	20	4	175	Core
Washington, Jamil	1970803985	104	Core	35	Core	57	Core	97%	Core	18	4	288	Core
Wallace-Young, Karrintin	1971325939	109	Core	29	Core	80	Core	98%	Core	19	4	316	Core
Anderson, Journee	1971770381	142	Core	49	Core	111	Core	100%	Core	29	4	400	Core
Elliott, Jayden	1969524261	26	Intensive	1	Intensive	0	Intensive						
Matthews, Kevin		6	Intensive	1	Intensive	0	Intensive						
Mean:		48.0		11.7		26.1		67.8%		9.2	2.1	131.1	

Legend ■ Core Support ■ Strategic Support ■ Intensive Support

Students not meeting goals? Visit [Big Ideas in Beginning Reading](#) to learn more about each literacy skill assessed and receive valuable tips on how to teach those skills.