

BRANFORD HIGH SCHOOL SCHOOL PROFILE 2017-2018



185 East Main Street
Branford, Connecticut 06405
Tel.: 203-488-7291 FAX: 203-315-5605
CEEB 070040
www.branfordschools.org

“A mission driven learning community, well known throughout the state for its far reaching vision and high standards of achievement.”

New England Association of Schools and Colleges

ADMINISTRATION

LEE PANAGOULIAS
PRINCIPAL

JOSEPH BRIGANTI
ASSISTANT PRINCIPAL

STEPHANIE BYRD
ASSISTANT PRINCIPAL

DIANNE DADIO
DEAN OF STUDENTS

COUNSELORS

MICHAEL CALLAN

MARIAN MONTANO

AIMEE BONN

AMY OLSZEWSKI

DOUGLAS WHITE

The mission of BHS is to is to prepare students to be independent and collaborative learners who are responsible, informed, and contributing members of society. In partnership with the community, we strive to provide a learning environment that supports all students in embracing diversity, acting with integrity, and achieving their personal and academic potential.

COMMUNITY

Branford, located in south-central Connecticut, on the north shore of Long Island Sound, is a suburban community located five miles east of New Haven. The population is approximately 28,000 residents of lower middle to upper middle income. The school district consists of one high school, one intermediate school and three elementary schools with a total enrollment of 2,856.

SCHOOL

Branford High School has a total enrollment of 882 in grades 9-12, with an average class size of 21. It is a comprehensive four year public high school with an alternative education program, HORIZONS, capable of enrolling 60 students. The experienced faculty, consisting of 108 professionals, is committed to a combination of academic excellence and the development of individual potential.

ACCREDITATION

Connecticut State Department of Education
New England Association of Schools and Colleges

COUNSELING SERVICES

Staff: Five full-time counselors, career specialist, registrar and two full-time secretaries.
Counselor Ratio: 1-185
Vertical Distribution: Counselors are assigned to counselees alphabetically per each grade level and remain with the student throughout high school.
Developmental Curricular Approach: Small group workshops, classroom activities, individual counseling, and weekly advisory meetings.

GRADUATION REQUIREMENTS

Subjects	Credits
English	4.0
Social Studies	3.0
Mathematics	3.0
Science	2.0
Phys. Ed/Heath	1.0
Fine/Practical	1.0
Electives	7.0
Total Credits	21.0

PERFORMANCE GRADUATION REQUIREMENTS: All students must demonstrate competency in seven key skills and concepts before they are graduated. PGR's are aligned to specific courses, as well as for the Senior Capstone Project and Community Service. Using specific performance standards/rubrics for each PGR, students are assessed on a scale from 1 to 4. In order to graduate, a student must earn at least a 3 in each PGR.

CAPSTONE PROJECT: is a graduation requirement. A senior must design, develop and present a research project to an audience in order to fulfill this requirement.

COMMUNITY SERVICE: is a graduation requirement. Over the course of four years in high school, BHS students are required to perform a minimum of 40 hours of community service in a planned program.

COURSE LEVELS

Students may select courses offered at four levels: 1 - Standard, 2 - Honors, 3 - Advanced Placement, 4 -UConn -ECE

Freshmen are generally enrolled in a heterogeneous course of study. An Honors Option is available for freshmen in second-level classes, such as Biology or Spanish. Sophomores are allowed an Honors Option in some classes, and may be enrolled in third-year Honors classes, such as Chemistry Honors. A variety of Standard, Honors and AP classes are available in most disciplines for sophomores, juniors and seniors.

SCHOOL YEAR

The school year is divided into two semesters: 18 weeks each with 9-week reporting cycles. A class period is 45 minutes.

GRADING

A = Excellent D = Poor
B = Good F = Failure
C = Fair I = Incomplete
WP = Withdrew from Course (passing at the time of withdrawal)
WF = Withdrew from Course (failing at the time of withdrawal)
P+ = Honors Pass/Fail Course
P = Passing for Credit
Au = Audit (no credit)

Note: WP, P, P+ do not affect grade point average. WF equals zero in determining GPA.

ACADEMIC GRADING SYSTEM

A+	97-100	B+	87-89	C+	77-79	D+	67-69	F	0-59
A	93-96	B	83-86	C	73-76	D	63-66		
A-	90-92	B-	80-82	C-	70-72	D-	60-62		

WEIGHTING OF COURSES

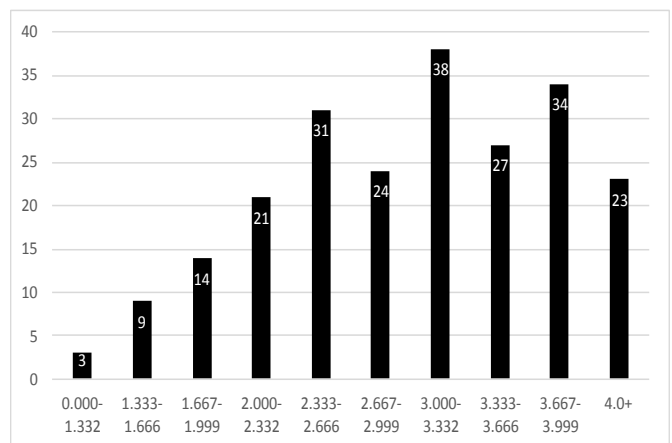
SCHOOL GPA: weighted average of all courses taken

GRADES	STANDARD	HONORS	AP
A+	4.33	4.67	4.83
A	4.00	4.33	4.50
A-	3.67	4.00	4.17
B+	3.33	3.67	3.83
B	3.00	3.33	3.50
B-	2.67	3.00	3.17
C+	2.33	2.67	2.83
C	2.00	2.00	2.00
C-	1.67	1.67	1.67
D+	1.33	1.33	1.33
D	1.00	1.00	1.00
D-	0.67	0.67	0.67
F	0.00	0.00	0.00

School GPA Distribution - Class of 2018

Branford High School does not use class rank. In place of reporting class rank, the following GPA graphic represents an individual student's overall level of academic performance in relation to his or her class.

School GPA Distribution Class of 2018



Sixth Semester GPA

SPECIAL PROGRAMS

Advanced Placement Courses: English, Calculus, Chemistry, Physics, United States History, Biology, Statistics, Environmental Science, Studio Art, Psychology, Latin, Human Geography

UConn Early College Experience: ECE is a concurrent enrollment program that allows motivated high school students to take UConn courses at their high schools for both high school and college credit.

Southern Connecticut Language and Culture Exposure Program: An interdistrict language and culture program taught at Yale University primarily by Yale graduate students. Students may choose to study Arabic, Chinese, Gaelic, German, Classical and Modern Greek, Italian, Kiswahili, Polish, Portuguese, Russian, or Spanish.

Independent Study: Independent Study gives the student the opportunity to study a subject above and beyond what is available within the present curriculum. The student will design a plan, timeline, and identify an advisor with his/her guidance counselor. Independent Study will be assessed on the basis of honors, pass or no credit.

School-To-Career Internship: A planned internship program for Branford High School students. The intern has the opportunity to learn workplace skills within a chosen career.

Senior Internship Program: An extension of the BHS Career Center's community outreach program that allows students the opportunity to demonstrate their ability to be a contributing member of their community. Students intern at a worksite in lieu of attending classes at BHS. Seniors who choose to complete an internship in May and June of their senior year must complete a minimum 140 hour on-site commitment.

COLLEGE BOUND SENIORS: 2017 SAT PROFILE

Total Score	Students
1400 - 1600	13
1200 - 1390	41
1000 - 1190	72
800 - 990	86
600 - 790	24
Mean EB Reading/Writing	528
Mean Math	508
Mean Total Score	1036
Test Takers	236

AP EXAM

Total Grades	174	Grades 3 or Higher	156
--------------	-----	--------------------	-----

DIPLOMAS GRANTED

With Honors	124	Total	245
-------------	-----	-------	-----

POST SECONDARY PLANS: CLASS OF 2017

4 Year Colleges	63%	2 Year Colleges	19%
Other Schools	4%	Armed Forces	4%
Employment	6%	Undecided	4%

INSTITUTION ACCEPTANCES - 2017

Adelphi University	Emerson College	Middlesex Community College	Stonehill College	University of Scranton
Albertus Magnus College	Emmanuel College	Mitchell College	Stony Brook University	University of South Carolina
American University	Fairfield University	Muhlenberg College	Suffolk University	University of Southern California
Arizona State University	Fisher College	New England College	Syracuse University	University of Tampa
Assumption College	Florida Institute of Technology	New England Inst. of Technology	Temple University	University of Texas
Barnard College	Fordham University	New York University	The Ohio State University	University of Toronto
Baruch College of the CUNY	Franklin Pierce University	Northeastern University	Trinity College	University of Tennessee
Bay Path University	Gateway Community College	Northern Vermont University	Tulane University	University of Vermont
Becker College	George Washington University	Norwich University	Union College	University of Virginia
Bentley University	Georgia Institute of Technology	Ohio University	United States Air Force Academy	University of Wisconsin
Boston College	Goldey-Beacom College	Pace University	United States Military Academy	Villanova University
Boston University	Green Mountain College	Pennsylvania State University	University of Alabama	Virginia Commonwealth University
Brandeis University	Hampshire College	Porter & Chester Institute	University of Bridgeport	Virginia Tech
Brown University	High Point University	Post University	University of British Columbia	Wake Forest University
Bryant University	Hillsdale College	Providence College	University of California	Washington & Lee University
Carnegie Mellon University	Hofstra University	Purchase College of SUNY	University of Central Florida	Washington College
Central Connecticut State Univ.	Hunter College of the CUNY	Purdue University	University of Cincinnati	Wentworth Institute of Technology
Champlain College	College of the Holy Cross	Queen's University	University of Colorado	Wesleyan University
Clark University	Indiana University at Bloomington	Quinnipiac University	University of Connecticut	Western Connecticut State Univ.
Clarkson University	Iona College	Regent University	University of Dallas	Western New England University
Clemson University	Ithaca College	Rensselaer Polytechnic Institute	University of Delaware	Westfield State University
Colby-Sawyer College	James Madison University	Rochester Institute of Technology	University of Denver	Wheaton College
College of Charleston	Johnson & Wales University	Roger Williams University	University of Florida	Wheelock College
College of Saint Rose	Keene State College	Rutgers University	University of Hartford	Williams College
College of William and Mary	La Salle University	Sacred Heart University	University of Maine	Worcester Polytechnic Institute
College of Wooster	Lasell College	Saint Joseph University	University of Maryland	Yale University
Concordia University - Montreal	Lehigh University	Saint Michael's College	University of Mary Washington	
Connecticut College	Lesley University	Salve Regina University	University of Massachusetts	
Curry College	Lincoln Technical Institute	Savannah College of Art & Design	University of Miami	
Dartmouth College	Lynchburg College	Seton Hall University	University of New England	
Davidson College	Manhattan College	Siena College	University of New Hampshire	
Dean College	Marist College	Southern Connecticut State Univ.	University of New Haven	
Denison University	McDaniel College	Southern New Hampshire Univ.	University of North Carolina	
DigiPen Institute of Technology	McGill University	Springfield College	University of Notre Dame	
Drexel University	McMaster University	St. John's University	University of Pennsylvania	
Eastern Connecticut State Univ.	Merrimack College	St. Thomas Aquinas College	University of Rhode Island	
Elon University	Miami University Oxford	SUNY at Albany	University of Rochester	

CURRICULUM OFFERINGS

<u>ART</u>	World Literature Semester	AP Calculus	Sociology
Ceramics I		Concepts of Mathematics - I	U.S. History I
Advanced Ceramics	<u>WORLD LANGUAGE</u>	Concepts of Mathematics - II	U.S. History II
Crafts	French I	Statistics	Western History UCONN ECE
Advanced Crafts	French II	AP Statistics	World Views, Wisdom and Religion - H
Drawing/Painting	French III	<u>MUSIC</u>	<u>SPECIAL PROGRAMS</u>
Advanced Drawing/Painting	French III - H	Band Basic	Independent Study
Graphic Design	French IV	Band/Concert Choir	Senior Internship
Advanced Graphic Design	French IV - H	Band/Jazz Ensemble	
Jewelry Design	French V	Choir Basics	
Advanced Jewelry Design	French V - H	Concert Choir	
Photography	Latin I	Guitar	<u>TECHNOLOGY EDUCATION</u>
Advanced Photography	Latin II	Main Street Singers	Automotive Mechanics Technology I
Sculpture	Latin III	Music Makers	Automotive Mechanics II
Advanced Sculpture	AP Latin	Music Appreciation	Computer Tech - Gaming
AP Studio Art	Spanish I - Beginning	Music Technology/Production	Programming I
Publications/Yearbook	Spanish I - Continuing	Music Theory	Computer Tech - Gaming
Advanced Publications/Yearbook	Spanish II	Musicianship	Programming II
	Spanish III	Orchestra	Computer Tech—Gaming
	Spanish III - H		Programming III
<u>BUSINESS & TECHNOLOGY EDUCATION</u>	Spanish IV	<u>SCIENCE</u>	Introductory Drafting Technology
Accounting I	Spanish IV - H	Anatomy & Physiology	Advancing Drafting Technology
Accounting II	Spanish V	Anatomy & Physiology - H	Hands-On Engineering
Business Law	Spanish V - H /ECE Latin American Studies	Biology	Advanced Hands-On Engineering
Introduction to Information Technology I	<u>FAMILY & CONSUMER SERVICES</u>	Marine Biology	Advanced Hands-On Engineering III
Money & Personal Finance	<u>VICES</u>	AP Biology	Introductory Graphics Technology
School-to-Career Internship	Child Development	Chemistry I	Advanced Graphics Technology
Sports/Business Management	Advanced Child Development	Chemistry I - H	Introductory Power Technology
	Food Technology	AP Chemistry II	Advanced Power Technology
	Advanced Food Technology	Environmental Science	Introductory Wood Technology
	Occupation Food Service Management	AP Environmental Science	Advanced Wood Technology
	Occupational Child Care	Exploratory Science	Video Production/Broadcasting
		Forensic Science	Advanced Video Production/Broadcasting
<u>LANGUAGE ARTS</u>	<u>MATHEMATICS</u>	Life Science	Advanced Video Production/Broadcasting, III
Acting Workshop	Integrated Mathematics	Physics I	Web Design & Computer Applications
American Literature	Algebra I	Physics I - H	
Boundless Theatre	Algebra I - Block	Physics II AP/ECE	
Civilization & Literature	Algebra II	<u>SOCIAL STUDIES</u>	
Creative Writing	Algebra II - Block	AP American History	
Advanced Creative Writing	Algebra II - H	Art History - H	
Digital Journalism & Publishing	Basic Geometry	Civilizations	
English 9	Geometry	Criminal Justice	
English 10	Plane Trigonometry	Current Issues	
English 11 - H	Advanced Algebra	Current Issues - H	
English 12 - H	Discrete Mathematics	Economics - H	
AP/ECE English	Pre-Calculus	Psychology	
Expository Writing	Pre-Calculus - H	AP Human Geography	
English 2nd Language	Introduction to Calculus - H	AP Psychology	
Film Study			
Advanced Film Study			
Public Speaking			
Read On			
World Literature			

PERFORMANCE GRADUATION REQUIREMENTS

- 1 Read Actively and Critically for a Variety of Purposes
- 2 Write Effectively for a Range of Purposes and Audiences
- 3 Demonstrate Appropriate and Effective Use of Technology
- 4 Collaborate and Communicate to Convey Ideas/Positions
- 5 Implement Critical Thinking Skills to Solve Problems
- 6 Design and Execute a Major Project that Fulfills the Student's own Stated Purpose
- 7 Demonstrates the Ability to be a Contributing Member of His / Her Community

BRANFORD HIGH SCHOOL DOES NOT DISCRIMINATE ON THE BASIS OF RACE, COLOR, NATIONAL ORIGIN, SEX, DISABILITY OR AGE IN ITS PROGRAMS AND ACTIVITIES.