



COURSE SELECTION

FRESHMEN



GRADUATION REQUIREMENTS

Additional Requirements

• **Community Service**
40 Hours

• **Learning Expectations**

English	4 credits
Math	3 credits
Social Studies	3 credits (Must include U.S. History, Civics. All Freshmen take World History.)
Science	3 credits (including Biology, Chemistry, Physics)
Physical Education	1.5 credits .5 Health
Arts/Vocational	1 credit
Electives	8.5 or More <i>To equal 24 credits</i>

COURSE LEVELS

Your *current teacher* recommends course levels for next year.

Level 1	General Studies
Level 2	College Preparatory
Level 3	Honors
Level 4	Advanced Placement



Recommendations are based on:

- Grades
- Test Results
- Student Work

Students Must Carry A Minimum of 6.75 Credits



GRADE 9

COURSE REQUIREMENTS



English (L1, L2, L3)

Math

World History

Science (Biology or Integrated Biology)

Student Success Seminar

PE

Electives

Art

Business

Family and Consumer Sciences

Technology

FPS

Music

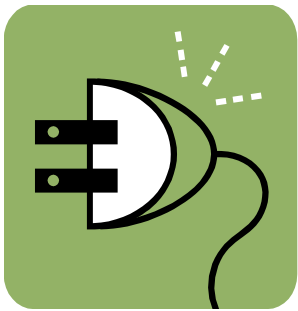
World Language

Media

GRADE 9 ENGLISH CHOICES



English 9 L1
English 9 L2
English 9 L3
English Pathways



TAKE CHARGE!

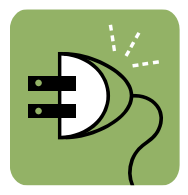
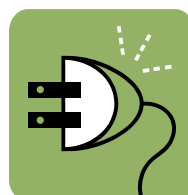
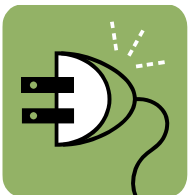
- You are responsible for choosing your courses. Teachers, school counselors, and administrators can help you make good choices!
- Courses you choose now will impact your future!
- When selecting courses, ask yourself:

How have I done in courses so far?

What subjects interest me most?

What do I want to do after high school?

What about college or a career after high school?



MY REQUESTED SCHEDULE FOR NEXT YEAR

Department	Course #	Course Title	Level	Credit	Teacher Signature
English				1	
Mathematics					
Science		Biology		1	
Social Studies		World History		1	
PE	800	PE Grade 9		0.5	
Student Success Seminar	7500	Student Success Seminar		0.25	
Elective					
Elective					
Elective					
Elective					
Elective					

I request to carry _____ total credits (6.75 minimum)

COURSES LISTED ABOVE SHOULD EQUAL DESIRED CREDITS FOR YOUR SCHEDULE

ALTERNATE ELECTIVES

Please fill in ALL FIVE (5) Alternate Elective choices

Alternate Elective					
Alternate Elective					
Alternate Elective					
Alternate Elective					
Alternate Elective					

Course Selection Process

Students

Select Courses for Schedule
(and alternate courses)

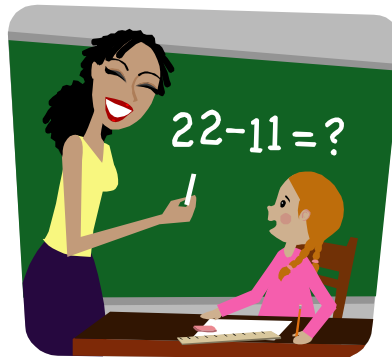


Course Selection Process

Continued

Teachers

Sign Form and Recommend Levels



Course Selection Process

Continued

Parents

Sign Course Request Form



Course Selection Process

Continued



Return form to Ms. Kleckner

Course Selection Process

Continued


Students

Enter Courses Online!



Schedule Example: 6.75 Credits

SEM 1

	Day A	Day B
1	PE (half year)	English
2	Algebra	Algebra
3	World History	Principles of Science
4	Spanish	Study Hall  Success Sem

SEM 2

	Day A	Day B
1	Study Hall (half year)	English
2	Algebra	Algebra
3	World History	Principles of Science
4	Spanish	Study Hall

ECA Block Schedule

SEM 1

SEM 2

DAY A

DAY B

ALG I	ALG I
WORLD HIST	PRIN SCI
SPANISH II	ENGLISH 9
ECA	ECA

DAY A

DAY B

ALG I	ALG I
WORLD HIST	PRIN SCI
SPANISH II	ENGLISH 9
ECA	ECA



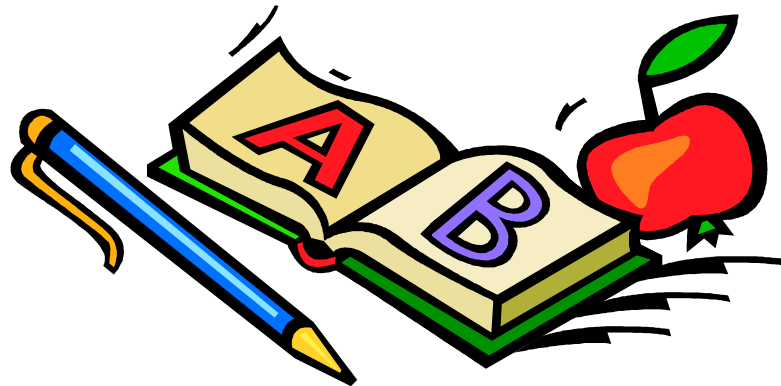
Remember

- Only choose courses you can live with!
- Course List Mailed in May/June
- September: Final Schedule on First Day
- No changes at this time, only Errors
- Schedule Errors =
 - Class in schedule was not listed on Course Request Form
 - Wrong course level
 - Double of the same class
 - Class is missing from schedule
 - Already took this class

Program Of Studies

Courses and descriptions can be found in our Program of Studies.

Available on the High School Web Site.





Reminder

Feb 7th @ 6:00pm Course Information Night

Questions?

You may meet with your school counselor any time if you have more questions!

