

November 8, 2013



Dear Parents and Families,

The **Scholastic Book Fair** is coming to Center Elementary School!

The Book Fair will be open from 8:30-4:00 Wednesday, November 20th-Friday November 22nd and 8:40-1:00 Monday, November 25th-27th. The Book Fair will also be open to families during parent-teacher conferences on November 25th and 26th.

Students will visit the Book Fair twice with their class. During the first week, students will make wish lists to bring home and share with their families. They will return the following week to make purchases. Please send money in with your child, if you choose, on their purchase day. Checks are payable to the **Center School Student Activity Fund**.

You may also visit our website at <http://bookfairs.scholastic.com/homepage/centerelementaryschool13> to preview some of the selections that will be offered. Please note there is no tax.

We need parent volunteers to help with wish lists and purchasing. If you would like to volunteer some of your time at the Book Fair, please email me at aredding@willingtonct.org. Thank you very much!

Sincerely,

Mrs. Redding

WILLINGTON PUBLIC SCHOOLS

40 Old Farms Road, Suite A, Willington, CT 06279 Phone: 860.487.3130 Fax: 860.487.3132

David C. Harding, Superintendent
dharding@willingtonct.org

<http://www.willingtonpublicschools.org/>

October 18, 2013

Dear Parent/Guardian:

Willington Public Schools strives to promote and maintain a safe and healthy school climate for all students and staff. During the 2011-2012 school year, the district developed and implemented a comprehensive school bullying policy which included in-service training for all school staff enabling them to recognize and respond quickly to bullying type behaviors. In addition, the district appointed a District Safe School Climate Coordinator and each school appointed a Safe School Climate Specialist.

Willington Public Schools seeks your assistance in determining ways to maintain and improve school climate. The Connecticut State Department of Education in conjunction with Public Act 11-232, has provided each school district in Connecticut with professional development opportunities for our staff and survey instruments to help us measure the effectiveness of our efforts to maintain safe schools.

Beginning Friday, October 18, 2013 through Sunday, October 27, 2013 School Climate surveys will be available at the links below.

Center School <https://www.surveymonkey.com/s/656TCMT>

Hall Memorial School <https://www.surveymonkey.com/s/ZKCH37B>

If you do not have access to this online survey, please pick up a paper copy in your school office, complete it, and leave it in the box designated for that purpose. If you have children in more than one school, please complete each school's survey.

Our students and staff will be asked to complete the survey online at their school during the upcoming weeks.

We hope you will take the time to provide us with this valuable information. Feel free to call me at 860-487-3130 or email me at dharding@willingtonct.org if you have any questions. Each school has developed a School Climate Committee and the Committee will analyze school results and continue to develop appropriate strategies, procedures, and/or programs to enhance the school climate.

Sincerely,

David C. Harding

Superintendent

Attention Parents & Teachers!



Do you have photo's of Center School students and/or staff taken at school? Classroom Volunteering? Field Trips? Spirit Day? PTA Events? Recess Games day?

You can submit these to the CES yearbook committee! Individual photos are welcome, but Class Photo's and Group Shots with multiple children are best to ensure that all of our students are included in 'candid' photos.

There are two ways to Submit:

- (1) Upload directly to community.lifetouch.com
Community Image Upload Site Access Code: QMUHCC
- (2) Email Digital Pictures to the Yearbook Committee :
CES.PTA.Yearbook@gmail.com

*Note: Photos selected to be used in the Yearbook is at the discretion of the Yearbook Committee. Not all photos submitted will be included in the Yearbook.

Thank you for your support!

Questions? Contact Dee Gilbert 429-6777



Scrip Gift Card Program

Dear Willington Parent,

Scrip is fundraising without any need for selling and a great way to raise money for our school. You can use Scrip gift cards to pay for everyday purchases in place of cash, checks, or credit cards, or you can give them as gifts.

Here is how it works: You purchase gift cards at face value and the school receives a percentage of the card value back from Scrip. Scrip offers over 300 gift cards to choose from including Home Depot, Target, Walmart, Kohl's, online retailers, clothing stores, restaurants and many more. If there is something you are looking for and do not see it on the attached order form, please visit www.glscrip.com. Use the gift cards for regular household purchases or as gifts (don't forget Teacher appreciation).

To order, simply return the attached order form with your payment to the school by **Friday Dec.6th**. Gift cards will then be delivered to you in time for the holidays. **Please make checks payable to: Willington PTA.**

If you would prefer, you can place an order online at www.shopwithscrip.com and use enrollment code **C1F8765E3969**

Thank you for your support!

Any questions, please feel free to contact:

Jen Krueger (860)429-8378 or jenny-aaron@sbcglobal.net

Family Order Form

Created: 11/5/2013 8:51:48 PM

The Willington PTA

Visit www.glscip.com for more retailers

Name	Customer #
Check #	Order Date

Product	%	QTY	Total	Product	%	QTY	Total	Product	%	QTY	Total
1-800-Flowers \$25.00	12.00%		\$	Best Buy \$100.00	3.00%		\$	Exxon \$50.00	1.00%		\$
99 Restaurants \$25.00	13.00%		\$	Best Buy \$25.00	3.00%		\$	Foot Locker \$25.00	9.00%		\$
Ace Hardware \$100.00	4.00%		\$	Bloomingdale's \$25.00	12.00%		\$	GameStop \$25.00	3.00%		\$
Ace Hardware \$25.00	4.00%		\$	Bonefish Grill \$25.00	8.00%		\$	Gap \$25.00	14.00%		\$
Advance Auto Parts \$25.00	7.00%		\$	Boston Market \$10.00	**14.00%		\$	GNC \$25.00	8.00%		\$
Aeropostale \$25.00	7.00%		\$	Build-A-Bear Workshop \$25.00	8.00%		\$	Groupon.com \$25.00	7.00%		\$
Amazon.com \$10.00	3.00%		\$	Burger King \$10.00	4.00%		\$	Gymboree \$25.00	13.00%		\$
Amazon.com \$100.00	3.00%		\$	Cabela's \$100.00	11.00%		\$	Hallmark \$25.00	4.00%		\$
Amazon.com \$25.00	3.00%		\$	Cabela's \$25.00	11.00%		\$	Home Depot \$100.00	4.00%		\$
AMC Theatres \$25.00	8.00%		\$	Carrabba's Italian Grill \$25.00	8.00%		\$	Home Depot \$25.00	4.00%		\$
American Eagle Outfitters \$25.00	10.00%		\$	Cheesecake Factory \$25.00	5.00%		\$	HomeGoods \$25.00	7.00%		\$
American Girl \$100.00	9.00%		\$	Children's Place \$25.00	12.00%		\$	Hometown Buffet \$25.00	5.00%		\$
American Girl \$25.00	9.00%		\$	Chili's Grill & Bar \$25.00	11.00%		\$	iTunes® \$15.00	**10.00%		\$
Applebee's \$25.00	10.00%		\$	Chipotle Mexican Grill \$10.00	10.00%		\$	iTunes® \$25.00	**10.00%		\$
Applebee's \$50.00	10.00%		\$	Christmas Tree Shops \$25.00	7.00%		\$	J. Crew \$25.00	13.00%		\$
Arby's \$10.00	8.00%		\$	Claire's \$10.00	9.00%		\$	J. Jill \$25.00	8.00%		\$
AT&T 125 Minute Prepaid Card \$9.50	20.00%		\$	Cold Stone Creamery \$10.00	8.00%		\$	jcpenny \$100.00	**6.00%		\$
Athleta \$25.00	14.00%		\$	Coldwater Creek \$25.00	8.00%		\$	jcpenny \$25.00	**6.00%		\$
AutoZone \$25.00	8.00%		\$	Country Buffet \$25.00	5.00%		\$	Jiffy Lube \$30.00	8.00%		\$
Babies"R"Us \$20.00	3.00%		\$	Cracker Barrel \$10.00	9.00%		\$	Jo-Ann Fabric and Craft Stores \$25.00	6.00%		\$
Banana Republic \$100.00	14.00%		\$	Cracker Barrel \$25.00	9.00%		\$	Kids Foot Locker \$25.00	9.00%		\$
Banana Republic \$25.00	14.00%		\$	Crate and Barrel \$25.00	8.00%		\$	Kmart \$25.00	**7.00%		\$
Barnes & Noble Booksellers \$10.00	9.00%		\$	Crazy 8 \$25.00	13.00%		\$	Kmart \$50.00	**7.00%		\$
Barnes & Noble Booksellers \$100.00	9.00%		\$	CVS/pharmacy \$25.00	6.00%		\$	Kohl's \$100.00	4.00%		\$
Barnes & Noble Booksellers \$25.00	9.00%		\$	Dick's Sporting Goods \$25.00	8.00%		\$	Kohl's \$25.00	4.00%		\$
Barnes & Noble Booksellers \$5.00	9.00%		\$	Disney \$100.00	2.00%		\$	L.L.Bean \$100.00	16.00%		\$
Bath & Body Works \$10.00	13.00%		\$	Disney \$25.00	2.00%		\$	L.L.Bean \$25.00	16.00%		\$
Bath & Body Works \$25.00	13.00%		\$	Dressbarn \$25.00	8.00%		\$	Lady Foot Locker \$25.00	9.00%		\$
Bed Bath & Beyond \$100.00	7.00%		\$	Dunkin' Donuts \$10.00	3.00%		\$	Lands' End \$25.00	16.00%		\$
Bed Bath & Beyond \$25.00	7.00%		\$	Eddie Bauer \$25.00	10.00%		\$	Limited \$25.00	9.00%		\$
Bertucci's Italian Restaurant \$25.00	10.00%		\$	Express \$25.00	10.00%		\$	LongHorn Steakhouse® \$25.00	9.00%		\$
				Express for Men \$25.00	10.00%		\$	Lord & Taylor \$25.00	8.00%		\$

Make Checks Payable To: *The Willington PTA*

Total Due All Columns:

\$

****Limited time bonus offer. Participating retailers and products are subject to change without notice.**

Family Order Form

Created: 11/5/2013 8:51:48 PM

The Willington PTA

Visit www.glscip.com for more retailers

Name	Customer #
Check #	Order Date

Product	%	QTY	Total	Product	%	QTY	Total	Product	%	QTY	Total
Lowe's \$100.00	4.00%		\$	Peebles \$25.00	8.00%		\$	Starbucks \$25.00	7.00%		\$
Lowe's \$20.00	4.00%		\$	Pep Boys \$20.00	4.00%		\$	Stop & Shop (NOT TOPS) \$100.00	4.00%		\$
Lowe's \$25.00	4.00%		\$	PetSmart \$25.00	4.00%		\$	Stop & Shop (NOT TOPS) \$50.00	4.00%		\$
Macaroni Grill \$25.00	11.00%		\$	Pier 1 Imports \$25.00	9.00%		\$	SUBWAY® Restaurants \$10.00	3.00%		\$
Macy's \$100.00	10.00%		\$	Pinkberry \$10.00	5.00%		\$	Sunglass Hut \$25.00	12.00%		\$
Macy's \$25.00	10.00%		\$	Pizza Hut (Not AK or HI) \$10.00	8.00%		\$	Sunoco \$50.00	1.00%		\$
Marriott Hotels & Resorts \$50.00	8.00%		\$	Pottery Barn \$100.00	8.00%		\$	T.J. Maxx \$100.00	7.00%		\$
Marshalls \$25.00	7.00%		\$	Pottery Barn \$25.00	8.00%		\$	T.J. Maxx \$25.00	7.00%		\$
Men's Wearhouse \$25.00	8.00%		\$	Pottery Barn Kids \$100.00	8.00%		\$	Taco Bell \$10.00	5.00%		\$
Michaels \$25.00	4.00%		\$	Pottery Barn Kids \$25.00	8.00%		\$	Tanger Outlets \$25.00	8.00%		\$
Mobil \$50.00	1.00%		\$	Quiznos \$10.00	10.00%		\$	Target \$10.00	2.00%		\$
Nike \$25.00	12.00%		\$	RadioShack \$25.00	4.00%		\$	Target \$100.00	2.00%		\$
NOOK by Barnes & Noble \$10.00	9.00%		\$	Rainforest Cafe \$25.00	9.00%		\$	Target \$25.00	2.00%		\$
NOOK by Barnes & Noble \$25.00	9.00%		\$	Rite Aid \$25.00	4.00%		\$	Texas Roadhouse \$25.00	8.00%		\$
NOOK by Barnes & Noble \$5.00	9.00%		\$	Ruby Tuesday \$25.00	8.00%		\$	Tim Hortons \$10.00	5.00%		\$
Office Depot \$25.00	4.00%		\$	Sally Beauty Supply \$25.00	12.00%		\$	Toys"R"Us \$20.00	3.00%		\$
Office Max \$25.00	5.00%		\$	Sam's Club \$100.00	2.50%		\$	Walgreens \$25.00	6.00%		\$
Old Country Buffet \$25.00	5.00%		\$	Sam's Club \$25.00	2.50%		\$	Walmart \$10.00	2.50%		\$
Old Navy \$25.00	14.00%		\$	Sears \$100.00	**7.00%		\$	Walmart \$100.00	2.50%		\$
Olive Garden® \$25.00	9.00%		\$	Sears \$25.00	**7.00%		\$	Walmart \$25.00	2.50%		\$
Outback Steakhouse \$25.00	8.00%		\$	Sears \$250.00	**7.00%		\$	Wendy's \$10.00	4.00%		\$
Overstock.com \$25.00	8.00%		\$	Sears Auto Service Center \$100.00	**7.00%		\$	Whole Foods Market \$25.00	3.00%		\$
Panera Bread \$10.00	9.00%		\$	Sears Auto Service Center \$25.00	**7.00%		\$	Williams-Sonoma \$100.00	8.00%		\$
Panera Bread \$25.00	9.00%		\$	Sears Auto Service Center \$250.00	**7.00%		\$	Williams-Sonoma \$25.00	8.00%		\$
Panera Bread \$5.00	9.00%		\$	Sephora \$20.00	4.00%		\$	Zappos.com \$25.00	8.00%		\$
Papa Gino's Pizzeria \$10.00	10.00%		\$	Shell \$100.00	2.50%		\$				
Papa John's Pizza \$10.00	8.00%		\$	Shell \$25.00	2.50%		\$				
Payless Shoes \$20.00	13.00%		\$	Shutterfly \$25.00	9.00%		\$				
Peapod Online Grocery \$100.00	4.00%		\$	Sports Authority \$100.00	8.00%		\$				
Peapod Online Grocery \$25.00	4.00%		\$	Sports Authority \$25.00	8.00%		\$				
Peapod Online Grocery \$50.00	4.00%		\$	Staples \$25.00	5.00%		\$				
				Starbucks \$10.00	7.00%		\$				

Make Checks Payable To: *The Willington PTA*

Total Due All Columns:

\$

****Limited time bonus offer. Participating retailers and products are subject to change without notice.**

ASSESSMENT IN AUTISM SPECTRUM DISORDERS

WHAT, WHERE, & WHEN TO EVALUATE

November 20 at 6:30 pm



At our next meeting on **Wednesday, November 20**, Dr. Kristen D'Eramo will present **Assessment in Autism Spectrum Disorders; What, Where, & When to Evaluate** from 6:30 to 8:00 pm.

Dr. D'Eramo is a licensed clinical psychologist and Director of Clinical Services at the Center for Children with Special Needs. She provides psychological evaluations with an emphasis on early identification and treatment of autism spectrum disorders. Dr. D'Eramo also co-directs the Behavioral Sleep Clinic. She received her PhD in Clinical Psychology from the University of Delaware and completed a postdoctoral fellowship at Brown University. Prior to assuming her position at The Center, Dr. D'Eramo held an appointment as Clinical Assistant Professor of Psychiatry and Human Behavior at Brown Medical School.

Meeting starts at 6:30 pm

Willington Public Library, 7 Ruby Road, Willington

This meeting is open to all!

Refreshments will be served!

Email info@successsepto.org or call with any questions:

Cathy Britschock 860-429-8333

Brenda Stenglein 860-429-1059

Facebook: SuccessSEPTO



**Success Special Education
Parent Teacher Organization**

Serving Northeast Connecticut

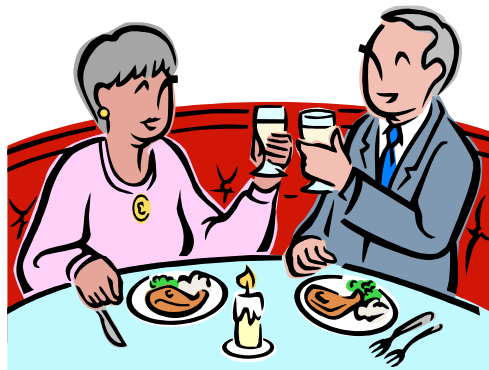
www.successsepto.org

Willington Nursery Co-op's Annual Waiter Night

Track Nine Diner
Friday- Nov. 15th
5:00-8:30 p.m.

Special Dinner Menu and Desserts

Proceeds Benefit Willington Nursery Co-op
860.429.3908



2013



Scouting for Food Willington Food Drive



Every fall, Scouting collects non-perishable food to assist those in need. The food collected by the Cub Scouts (Pack 82) and Boy Scouts (Troop 82) stays in Willington and directly benefits Willington families. In the past 16 years, Boy Scouts and Cub Scouts in Willington have collected over 52,810 items for the local food pantry.

If you are able to donate non-perishable food items, please place them in this bag and leave it on your front step or porch where it will be clearly visible from the road. A scout will pick it up between 9:00 AM and 3:00 PM on Saturday, November 9th. If your bag has not been picked up by 3:00 PM, please call Michelle Hipsky at 860-377-5842.

If you are interested in learning more about Scouting, please visit <http://willingtonscouts.org>

Thank you for helping us help the needy in our community as the fall holiday season begins.

Food Drive to Benefit:

The Willington Food Pantry

Are you, or someone you care about,
in need of food, heat or holiday assistance?
Call us confidentially!
Willington Youth, Family & Social Services
860-487-3118

***THANK YOU TO BOTH SCOUTS, AND RESIDENTS
FOR YOUR GENEROUS SUPPORT***



Town of Willington



Harvest Fire

Come gather “round the campfire” at this FREE community event

Hosted by Willington Youth Services Advisory Board

Friday November 8, 2013

6:00- 9:00 pm

At the Willington Hill Fire Department



- ✿ Admission is free to this family-friendly event!
- ✿ S’ Mores, hot chocolate & Apple Cider for sale (\$1 each)
- ✿ Donations gratefully accepted anytime!
- ✿ Bring the whole family and warm up by the fire while you help keep vulnerable Willington families & seniors warm this winter.

Confidential Town Phone Line: Call today with your question about the state heating assistance program or the TOW fuel bank! 860-487-3118

ALL proceeds to benefit the Willington Fuel Bank

