

Winter Festival 2013

Wednesday, Dec. 11th & Thursday, Dec. 12th
6:30 pm, Hall School Gymnasium

Wednesday's performances will include: the 4th Grade Chorus, Mixed Chorus (5th & 6th grades), the Concert Band (5th & 6th grades) and selected small groups.

Thursday's performances will include: the Festival Chorus (7th & 8th grades), the Select Chorus, the Symphonic Band (7th & 8th grade) and select chamber groups.

Arrival Times for Performers:

Small Groups and officers: 5:45

Brass/Woodwinds: 6:00

Large Choruses: 6:15

Percussion: 6:15

Dress Code for Performers:

For boys:

- Black pants (no jeans or sweatpants!)
- Black socks and black shoes
- White shirt (not a t-shirt, no logos or patterns)

For girls:

- Black pants or a *long* black skirt (at least knee length)
- Black socks or hose with black shoes
- White shirt or blouse (not a t-shirt, no logos or patterns)





UPDATED

Scrip Gift Card Program

Dear Willington Parent,

Update: We have added another deadline to accommodate those who wanted to use the gift cards for holiday shopping. The deadlines are Nov. 19th and Dec. 6th.

Scrip is fundraising without any need for selling and a great way to raise money for our school. You can use Scrip gift cards to pay for everyday purchases in place of cash, checks, or credit cards, or you can give them as gifts.

Here is how it works: You purchase gift cards at face value and the school receives a percentage of the card value back from Scrip. Scrip offers over 300 gift cards to choose from including Home Depot, Target, Walmart, Kohl's, online retailers, clothing stores, restaurants and many more. If there is something you are looking for and do not see it on the attached order form, please visit www.glscrip.com. Use the gift cards for regular household purchases or as gifts (don't forget Teacher appreciation).

To order, simply return the attached order form with your payment to the school by either Tuesday, Nov. 19th or Friday Dec. 6th. Gift cards will then be delivered approximately one week after the deadline. Please make checks payable to: Willington PTA.

If you would prefer, you can place an order online at www.shopwithscrip.com and use enrollment code **C1F8765E3969**

Thank you for your support!

Any questions, please feel free to contact:

Jen Krueger (860)429-8378 or jenny-aaron@sbcglobal.net

Family Order Form

Created: 11/5/2013 8:51:48 PM

The Willington PTA

Visit www.glscip.com for more retailers

Name	Customer #
Check #	Order Date

Product	%	QTY	Total	Product	%	QTY	Total	Product	%	QTY	Total
1-800-Flowers \$25.00	12.00%		\$	Best Buy \$100.00	3.00%		\$	Exxon \$50.00	1.00%		\$
99 Restaurants \$25.00	13.00%		\$	Best Buy \$25.00	3.00%		\$	Foot Locker \$25.00	9.00%		\$
Ace Hardware \$100.00	4.00%		\$	Bloomingdale's \$25.00	12.00%		\$	GameStop \$25.00	3.00%		\$
Ace Hardware \$25.00	4.00%		\$	Bonefish Grill \$25.00	8.00%		\$	Gap \$25.00	14.00%		\$
Advance Auto Parts \$25.00	7.00%		\$	Boston Market \$10.00	**14.00%		\$	GNC \$25.00	8.00%		\$
Aeropostale \$25.00	7.00%		\$	Build-A-Bear Workshop \$25.00	8.00%		\$	Groupon.com \$25.00	7.00%		\$
Amazon.com \$10.00	3.00%		\$	Burger King \$10.00	4.00%		\$	Gymboree \$25.00	13.00%		\$
Amazon.com \$100.00	3.00%		\$	Cabela's \$100.00	11.00%		\$	Hallmark \$25.00	4.00%		\$
Amazon.com \$25.00	3.00%		\$	Cabela's \$25.00	11.00%		\$	Home Depot \$100.00	4.00%		\$
AMC Theatres \$25.00	8.00%		\$	Carrabba's Italian Grill \$25.00	8.00%		\$	Home Depot \$25.00	4.00%		\$
American Eagle Outfitters \$25.00	10.00%		\$	Cheesecake Factory \$25.00	5.00%		\$	HomeGoods \$25.00	7.00%		\$
American Girl \$100.00	9.00%		\$	Children's Place \$25.00	12.00%		\$	Hometown Buffet \$25.00	5.00%		\$
American Girl \$25.00	9.00%		\$	Chili's Grill & Bar \$25.00	11.00%		\$	iTunes® \$15.00	**10.00%		\$
Applebee's \$25.00	10.00%		\$	Chipotle Mexican Grill \$10.00	10.00%		\$	iTunes® \$25.00	**10.00%		\$
Applebee's \$50.00	10.00%		\$	Christmas Tree Shops \$25.00	7.00%		\$	J. Crew \$25.00	13.00%		\$
Arby's \$10.00	8.00%		\$	Claire's \$10.00	9.00%		\$	J. Jill \$25.00	8.00%		\$
AT&T 125 Minute Prepaid Card \$9.50	20.00%		\$	Cold Stone Creamery \$10.00	8.00%		\$	jcpenny \$100.00	**6.00%		\$
Athleta \$25.00	14.00%		\$	Coldwater Creek \$25.00	8.00%		\$	jcpenny \$25.00	**6.00%		\$
AutoZone \$25.00	8.00%		\$	Country Buffet \$25.00	5.00%		\$	Jiffy Lube \$30.00	8.00%		\$
Babies"R"Us \$20.00	3.00%		\$	Cracker Barrel \$10.00	9.00%		\$	Jo-Ann Fabric and Craft Stores \$25.00	6.00%		\$
Banana Republic \$100.00	14.00%		\$	Cracker Barrel \$25.00	9.00%		\$	Kids Foot Locker \$25.00	9.00%		\$
Banana Republic \$25.00	14.00%		\$	Crate and Barrel \$25.00	8.00%		\$	Kmart \$25.00	**7.00%		\$
Barnes & Noble Booksellers \$10.00	9.00%		\$	Crazy 8 \$25.00	13.00%		\$	Kmart \$50.00	**7.00%		\$
Barnes & Noble Booksellers \$100.00	9.00%		\$	CVS/pharmacy \$25.00	6.00%		\$	Kohl's \$100.00	4.00%		\$
Barnes & Noble Booksellers \$25.00	9.00%		\$	Dick's Sporting Goods \$25.00	8.00%		\$	Kohl's \$25.00	4.00%		\$
Barnes & Noble Booksellers \$5.00	9.00%		\$	Disney \$100.00	2.00%		\$	L.L.Bean \$100.00	16.00%		\$
Bath & Body Works \$10.00	13.00%		\$	Disney \$25.00	2.00%		\$	L.L.Bean \$25.00	16.00%		\$
Bath & Body Works \$25.00	13.00%		\$	Dressbarn \$25.00	8.00%		\$	Lady Foot Locker \$25.00	9.00%		\$
Bed Bath & Beyond \$100.00	7.00%		\$	Dunkin' Donuts \$10.00	3.00%		\$	Lands' End \$25.00	16.00%		\$
Bed Bath & Beyond \$25.00	7.00%		\$	Eddie Bauer \$25.00	10.00%		\$	Limited \$25.00	9.00%		\$
Bertucci's Italian Restaurant \$25.00	10.00%		\$	Express \$25.00	10.00%		\$	LongHorn Steakhouse® \$25.00	9.00%		\$
				Express for Men \$25.00	10.00%		\$	Lord & Taylor \$25.00	8.00%		\$

Make Checks Payable To: *The Willington PTA*

Total Due All Columns:

\$

****Limited time bonus offer. Participating retailers and products are subject to change without notice.**

Family Order Form

Created: 11/5/2013 8:51:48 PM

The Willington PTA

Visit www.glscip.com for more retailers

Name	Customer #
Check #	Order Date

Product	%	QTY	Total	Product	%	QTY	Total	Product	%	QTY	Total
Lowe's \$100.00	4.00%		\$	Peebles \$25.00	8.00%		\$	Starbucks \$25.00	7.00%		\$
Lowe's \$20.00	4.00%		\$	Pep Boys \$20.00	4.00%		\$	Stop & Shop (NOT TOPS) \$100.00	4.00%		\$
Lowe's \$25.00	4.00%		\$	PetSmart \$25.00	4.00%		\$	Stop & Shop (NOT TOPS) \$50.00	4.00%		\$
Macaroni Grill \$25.00	11.00%		\$	Pier 1 Imports \$25.00	9.00%		\$	SUBWAY® Restaurants \$10.00	3.00%		\$
Macy's \$100.00	10.00%		\$	Pinkberry \$10.00	5.00%		\$	Sunglass Hut \$25.00	12.00%		\$
Macy's \$25.00	10.00%		\$	Pizza Hut (Not AK or HI) \$10.00	8.00%		\$	Sunoco \$50.00	1.00%		\$
Marriott Hotels & Resorts \$50.00	8.00%		\$	Pottery Barn \$100.00	8.00%		\$	T.J. Maxx \$100.00	7.00%		\$
Marshalls \$25.00	7.00%		\$	Pottery Barn \$25.00	8.00%		\$	T.J. Maxx \$25.00	7.00%		\$
Men's Wearhouse \$25.00	8.00%		\$	Pottery Barn Kids \$100.00	8.00%		\$	Taco Bell \$10.00	5.00%		\$
Michaels \$25.00	4.00%		\$	Pottery Barn Kids \$25.00	8.00%		\$	Tanger Outlets \$25.00	8.00%		\$
Mobil \$50.00	1.00%		\$	Quiznos \$10.00	10.00%		\$	Target \$10.00	2.00%		\$
Nike \$25.00	12.00%		\$	RadioShack \$25.00	4.00%		\$	Target \$100.00	2.00%		\$
NOOK by Barnes & Noble \$10.00	9.00%		\$	Rainforest Cafe \$25.00	9.00%		\$	Target \$25.00	2.00%		\$
NOOK by Barnes & Noble \$25.00	9.00%		\$	Rite Aid \$25.00	4.00%		\$	Texas Roadhouse \$25.00	8.00%		\$
NOOK by Barnes & Noble \$5.00	9.00%		\$	Ruby Tuesday \$25.00	8.00%		\$	Tim Hortons \$10.00	5.00%		\$
Office Depot \$25.00	4.00%		\$	Sally Beauty Supply \$25.00	12.00%		\$	Toys'R'Us \$20.00	3.00%		\$
Office Max \$25.00	5.00%		\$	Sam's Club \$100.00	2.50%		\$	Walgreens \$25.00	6.00%		\$
Old Country Buffet \$25.00	5.00%		\$	Sam's Club \$25.00	2.50%		\$	Walmart \$10.00	2.50%		\$
Old Navy \$25.00	14.00%		\$	Sears \$100.00	**7.00%		\$	Walmart \$100.00	2.50%		\$
Olive Garden® \$25.00	9.00%		\$	Sears \$25.00	**7.00%		\$	Walmart \$25.00	2.50%		\$
Outback Steakhouse \$25.00	8.00%		\$	Sears \$250.00	**7.00%		\$	Wendy's \$10.00	4.00%		\$
Overstock.com \$25.00	8.00%		\$	Sears Auto Service Center \$100.00	**7.00%		\$	Whole Foods Market \$25.00	3.00%		\$
Panera Bread \$10.00	9.00%		\$	Sears Auto Service Center \$25.00	**7.00%		\$	Williams-Sonoma \$100.00	8.00%		\$
Panera Bread \$25.00	9.00%		\$	Sears Auto Service Center \$250.00	**7.00%		\$	Williams-Sonoma \$25.00	8.00%		\$
Panera Bread \$5.00	9.00%		\$	Sephora \$20.00	4.00%		\$	Zappos.com \$25.00	8.00%		\$
Papa Gino's Pizzeria \$10.00	10.00%		\$	Shell \$100.00	2.50%		\$				
Papa John's Pizza \$10.00	8.00%		\$	Shell \$25.00	2.50%		\$				
Payless Shoes \$20.00	13.00%		\$	Shutterfly \$25.00	9.00%		\$				
Peapod Online Grocery \$100.00	4.00%		\$	Sports Authority \$100.00	8.00%		\$				
Peapod Online Grocery \$25.00	4.00%		\$	Sports Authority \$25.00	8.00%		\$				
Peapod Online Grocery \$50.00	4.00%		\$	Staples \$25.00	5.00%		\$				
				Starbucks \$10.00	7.00%		\$				

Make Checks Payable To: *The Willington PTA*

Total Due All Columns:

\$

****Limited time bonus offer. Participating retailers and products are subject to change without notice.**



Alyssa's Coat Closet

Please donate your new or slightly used, clean coats to the 5th Annual Alyssa's Coat Closet.

The coats will be showcased at the Town Hall (Community Room) 40 Old Farms Rd, Willington, CT for a FREE shopping event where everyone is invited to "shop" for FREE winter coats.

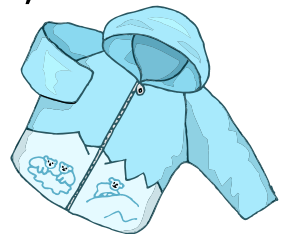


The shopping dates are:
Friday, December 6th - 5-7 pm
Saturday, December 7th - 5-7pm

The Donation box locations are:

Willington Public Library - 7 Ruby Rd
Willington Town Offices - 40 Old Farms Rd

EO Smith High School - Storrs Rd,
Mansfield, CT



Thank you.

This event is sponsored by Alyssa Bailey, Please call (860) 684-6761 with any questions

Willington Nursery Coop presents:

Children's Christmas Bazaar

Saturday, December 7th

10:00am-3:00pm

Willington Hill Fire Dept

Christmas Carols at 11:00am

The Hall School chorus

Santa arrives at 12:00

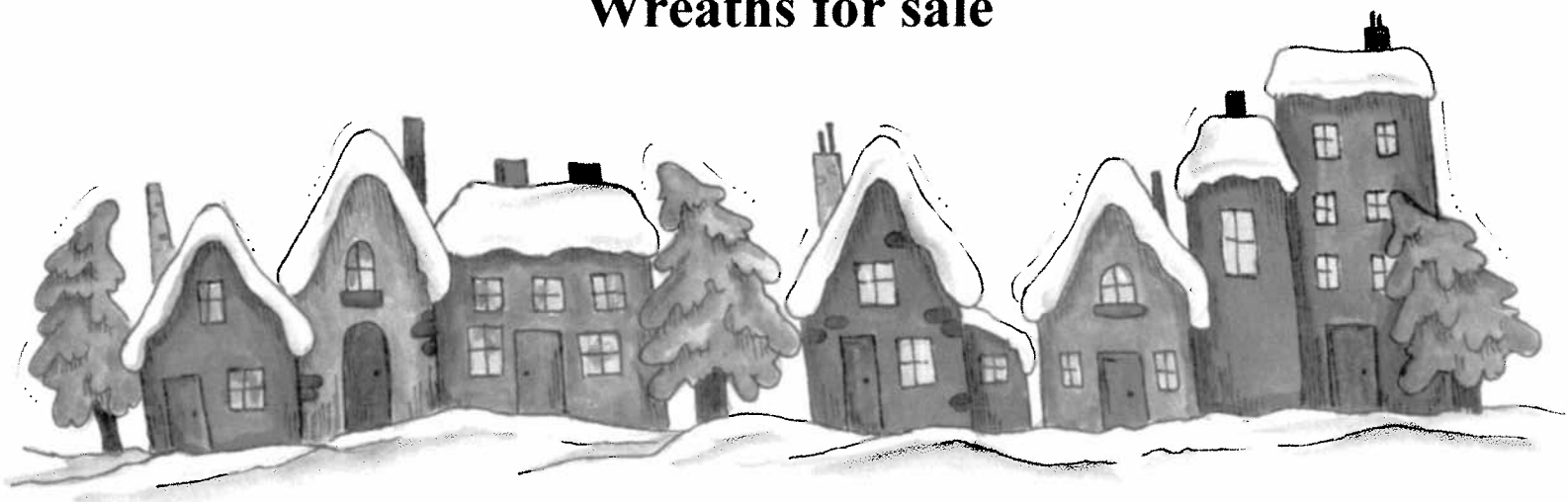
Pictures with Santa 12:00pm-1:30pm

Bake sale

Crafts and games for the kids

Shopping at the Children's Store

Wreaths for sale



Breakfast with Santa

Sponsored by:

Willington Boy Scout Troop 82



Saturday, December 14

8AM and 9AM

Location: Willington Hill Fire Department
24 Old Farms Road, Willington, CT

Tickets are available at the door: \$7 for adults, \$4 for children (children under the age of 3 are free!)

All Proceeds will benefit the Hole in the Wall Gang Camp

WILLINGTON PTA TEACHER AND STAFF COOKIE BUFFET



MONDAY DECEMBER 16th

LOOKING FOR BAKERS FOR HALL AND CENTER SCHOOLS

PLEASE SIGN UP BY EMAILING

SUE AT

SUZYQUE_2@CHARTER.NET

OR

TEXTING ME AT

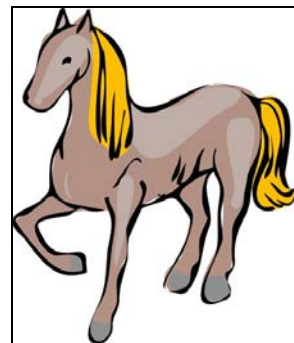
860-377-4219

COOKIES SHOULD BE DROPPED OFF BY 10 AM

HAPPY HOLIDAYS!

THERAPEUTIC BENEFITS OF HORSEBACK RIDING

Success Special Education PTO
Wednesday, December 18, 2013 · 6:30 pm



Featured Speaker:

Karin Bromley, MA Special Education
Therapeutic Riding Instructor

Therapeutic riding is an intervention that has helped thousands of children with special needs. Our **December 18** meeting will feature **Karin Bromley** of **Premier Equine Therapeutics** who will explain how horses and "equine assisted activities" are used to support the growth of cognitive, physical, emotional and social skills in children.

Meeting starts at 6:30 pm

Willington Public Library, 7 Ruby Road, Willington

This meeting is open to all!

Refreshments will be served!

Email info@successsepto.org or call with any questions:

Cathy Britschock 860-429-8333

Brenda Stenglein 860-429-1059

Facebook: SuccessSEPTO

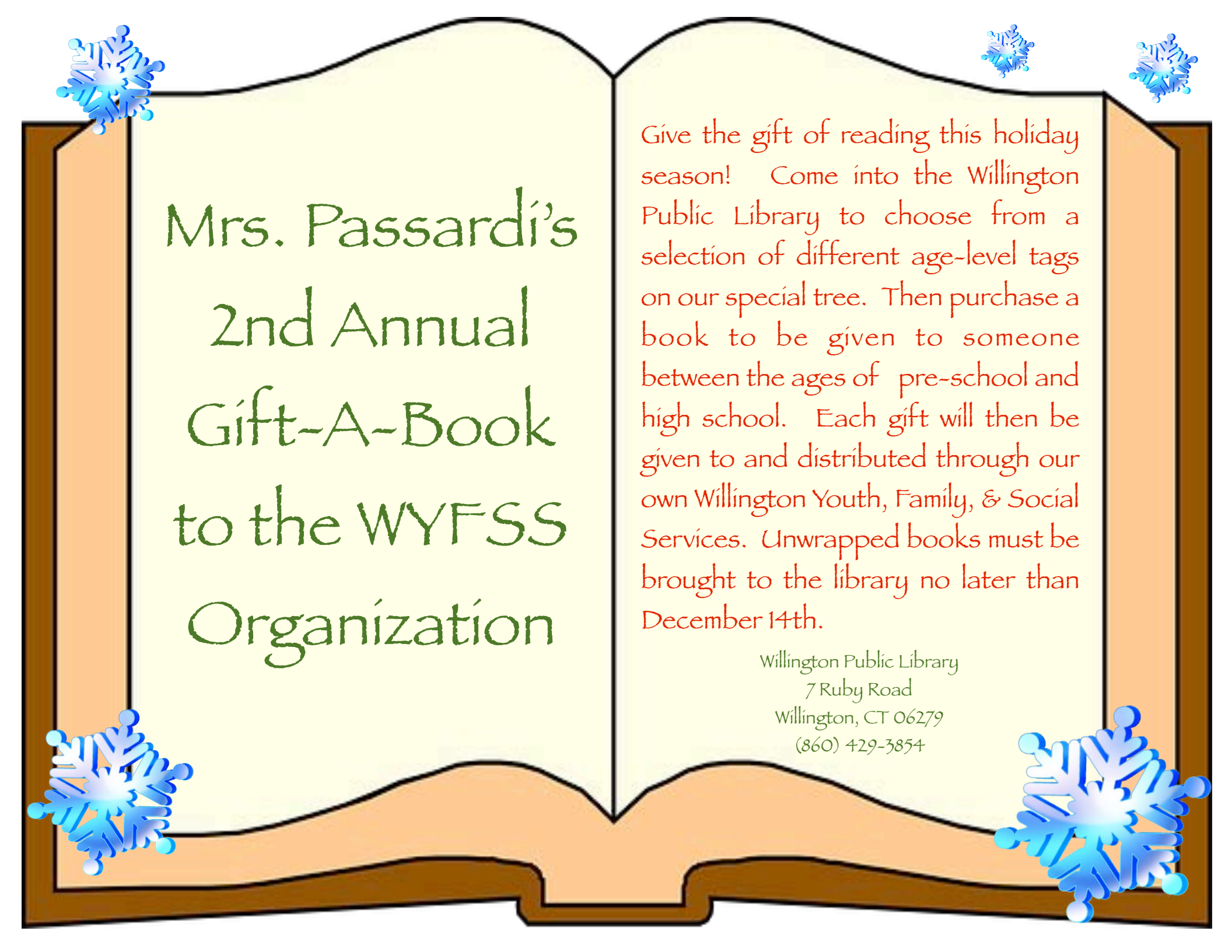


**Success Special Education
Parent Teacher Organization**

Serving Northeast Connecticut

www.successsepto.org

Member of the Connecticut Special Education PTO Alliance



Mrs. Passardi's
2nd Annual
Gift-A-Book
to the WYFSS
Organization

Give the gift of reading this holiday season! Come into the Willington Public Library to choose from a selection of different age-level tags on our special tree. Then purchase a book to be given to someone between the ages of pre-school and high school. Each gift will then be given to and distributed through our own Willington Youth, Family, & Social Services. Unwrapped books must be brought to the library no later than December 14th.

Willington Public Library
7 Ruby Road
Willington, CT 06279
(860) 429-3854