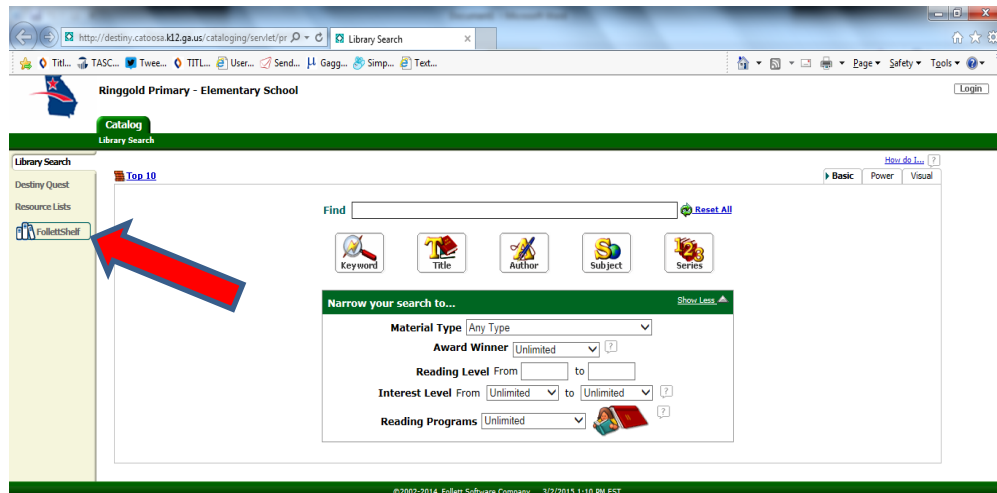


Accessing RES/RPS FollettShelf

- When at school, go to Destiny from the app launcher. From home, you can access Destiny from our RES website by going to the media center page and clicking on **Library Search**.
- Click on FollettShelf



- **STUDENTS:**
 - Username: Lunch number (ex: 30145867)
 - Password: Birthdate (081405)
- **GUESTS:**
 - Username: guest
 - Password: tiger
- If you log in as a student, you have access to “check out” a book, which will allow you to save your place and make virtual notes. Otherwise, it’s best to just “look” at the book without checking it out.

Searching in Destiny may be accessed the same way.