



# Accountability Report

Results-Based Evaluation System

Issued 2010–11



## Central Gwinnett High School

Nancy Martin, *Principal*

Dr. John Green, *Area Superintendent*

Gwinnett County Public Schools (GCPS) has developed an accountability system for improving schools called the Results-Based Evaluation System (RBES). RBES fairly and systematically measures a school's progress, providing a process that clearly communicates expectations; reviews, monitors, and supports school performance; and evaluates that performance.

The Central Gwinnett school council and school leaders collaborated on the highlights included in this accountability report, which also serves as the school's annual report. The report provides consolidated information on the school's effectiveness, based on multiple measures and student characteristics. **Please review this report to learn more about the school's improvement efforts and progress.**

### Key Results from 2009–10 Local School Plans for Improvement

Local School Plans for Improvement are plans developed locally by school administrators, teachers, and parent advisory groups. These plans outline school goals.

**Goal:** To increase the graduation rate of all students.

**Results:** Central Gwinnett's graduation rate continues to improve, increasing from 75.9 % in 2009 to 80.7% in 2010. (This reflects the percentage of "on time" graduates who graduate with their classmates, four years after starting high school. Some students may take longer to meet requirements for graduation. )

**Goal:** To increase student achievement in the core academic classes by focusing on intervention and rigor for each core area.

**Results:** A high percentage of Central Gwinnett High School students continues to meet the state standards in math and language arts. Central Gwinnett's average scores significantly improved on the Gateway assessment from the previous year. Passing rates on End of Course Tests (EOCT) continued to improve, with the greatest gains in biology, up 8 percentage points compared to 2009.

**Goal:** To increase effective parental involvement through better communication practices, parent education, and the newly established parent center.

**Results:** Central Gwinnett High School established a Parent Center staffed with a parent instructional support coordinator (PISC) who is a certified teacher. The Parent Center operates on a flexible schedule for maximum participation. The PISC facilitates workshops to educate parents on how to work with their child and the faculty in order to improve their student's achievement.

### CONTENTS:

Key Results on Improvement Plans

2009–10 Results:

- Senior Report
- SAT
- Gateway Assessment
- Georgia High School Graduation Tests and Adequate Yearly Progress
- Advanced Placement Exams

2009–10 Highlights

Staff Data

Student Data

School Safety Perceptions

**Tell us what you think about this report.**

**Click here to complete a questionnaire online.**

## 2009–10 Senior Report

	Students Completing HS†	Number of Seniors Planning to Attend College or Postsecondary School*	Number of Honor Graduates	Number of Seniors Taking Advanced Placement (AP) Courses	Number of AP Courses Taken by Seniors	Seniors with Dual Enrollment
<b>Central Gwinnett High</b>	490	393	73	210	547	11
<b>GCPS</b>	9,331	7,773	1,890	4,217	11,304	116

†Reflects system-reported data as of August 2010

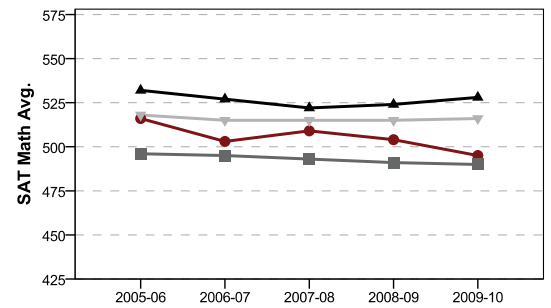
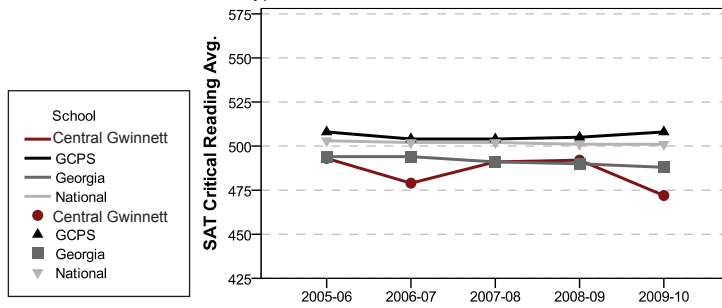
\*Student information self-reported as of April 2010

### 2009–10 Results: SAT

A popular college-admissions test, the SAT features complex reading passages and math concepts, and a writing section. The table to the right shows average scores and percentages of students taking the SAT at our school, compared to the district, state, and nation. The graphs below compare Central Gwinnett students' scores to the Gwinnett, state, and national averages on the SAT.

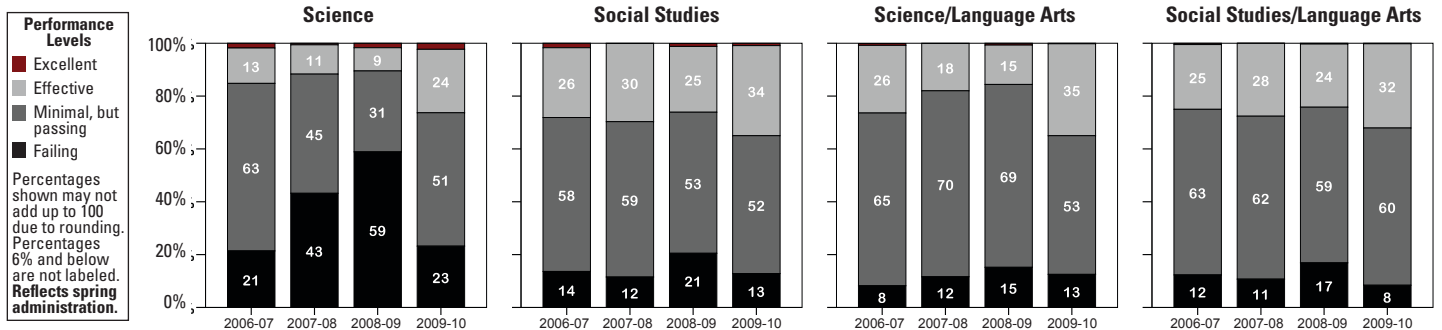
### 2009–10 SAT Averages

	Critical Reading	Math	Writing	Total	% Tested
Central Gwinnett	472	495	454	1421	61%
GCPS	508	528	496	1532	74%
Georgia	488	490	475	1453	64%
National	501	516	492	1509	37%



### 2009–10 Results: High School Gateway

To earn a regular diploma, Gwinnett high school students must pass both GCPS's High School Gateway and the Georgia High School Graduation Tests. Given in the 10th grade, the Gateway essay test covers content in social studies and science, as well as language arts skills—writing, grammar, and spelling. To ensure that more students meet the standard on the high school Gateway, GCPS is offering additional resources, tutorials, and practice opportunities through the school system website. While many students are successful on the test on their first try, those who are not have seven additional opportunities to take and pass the test before graduation.



### 2009–10 Results: Advanced Placement (AP) Exams

Advanced Placement (AP) courses are challenging, college-level classes taught by specially trained high school teachers. Students have the option of taking an AP exam at the end of the school year. Many colleges award credit for passing the exams or allow a student to be exempt from certain college courses. Students exposed to the demanding AP curriculum are well prepared for the rigors of college coursework. The table below shows the percentage of classes taken at Central Gwinnett High that were designated as AP classes, compared to the county average. The chart also shows the percentage of optional, course-specific AP exams taken, as well as the percentage of AP exams scored 3 or better (on a 5-point scale). In 2009–10, 23.5% of Central Gwinnett students took one or more AP courses, compared to 27.8% of all GCPS high school students.

	2006–07		2007–08		2008–09		2009–10	
	Central Gwinnett	GCPS	Central Gwinnett	GCPS	Central Gwinnett	GCPS	Central Gwinnett	GCPS
AP as Percentage of Total Classes Taken	5.7	5.4	6.1	6.2	5.9	7.3	6.7	8.8
% AP Exams Taken	69.3	72.8	74.6	74.6	77.6	77.3	77.4	77.0
% AP Exams Scored 3+	50.1	64.4	49.3	63.1	49.3	61.8	29.7	57.5

## 2009–10 Results: Georgia High School Graduation Tests (GHSGT) and Adequate Yearly Progress

Schools earn Adequate Yearly Progress (AYP) status by meeting a series of performance goals that every school, system, and the state as a whole must achieve under the federal No Child Left Behind Act. In Georgia, AYP for high schools is determined using results from the Georgia High School Graduation Tests (GHSGT) in English language arts and mathematics. These tests measure the knowledge and skills of students by assessing how well students have learned the state’s curriculum content standards. To make AYP, high schools must meet state-set student achievement goals and graduation standards for all students, and for all subgroups that have 40 or more students or 10% of the students in grade 11, whichever is greater (with a 75-student cap). In addition, schools must test 95% of all students and of all subgroups with 40 or more students. Georgia reports achievement scores for every subgroup with 10 or more students. However, the state only considers results for subgroups that meet the state-set minimum number of students in determining a school’s AYP status.

Central Gwinnett High achieved AYP	All Students	Asian/Pacific Islander	Black	Hispanic	American Indian/Alaskan	White	Multi-Racial	Students with Disabilities	Limited English Proficient	Economically Disadvantaged
Math Participation	Achieved	·	Achieved	Achieved	·	Achieved	·	Achieved	·	Achieved
Math Performance	Achieved	·	Achieved	Achieved	·	Achieved	·	·	·	Achieved
Eng. Lang. Arts Participation	Achieved	·	Achieved	Achieved	·	Achieved	·	Achieved	·	Achieved
Eng. Lang. Arts Performance	Achieved	·	Achieved	Achieved	·	Achieved	·	·	·	Achieved

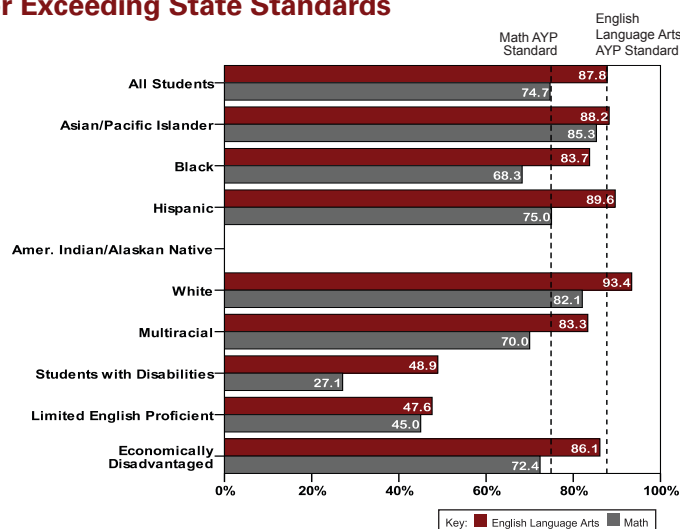
This school **achieved** the state’s graduation standard for all students.

• In the table above, only results for subgroups that meet the state-set minimum number of students are used to determine AYP

### Percentage of Students Meeting or Exceeding State Standards

The GHSGT is a curriculum-based test used to measure high school students’ learning. Central Gwinnett High made Adequate Yearly Progress (AYP), meeting all of the state’s academic goals, testing participation requirements, and graduation standards.

In the chart to the right, only subgroups with 10 or more students are reported. Results for groups smaller than the state minimum are not considered for AYP. The dotted lines on this graph represent the state’s AYP standard in Math and English Language Arts in 2010. The standards will increase to 100% by 2014. The chart to the right reflects spring and summer test administrations.



### A Message from the Principal About Student Achievement and Academic Initiatives

Student success is a result of our high expectations for student achievement, quality teaching practices, a rigorous curriculum, and effective intervention and extension classes. All of these factors combine to support student achievement and create a rigorous learning environment for our students. Rigor is not necessarily about more work, but rather about the quality of the work that students are expected to produce. Advanced Placement (AP) classes— such as calculus, statistics, macroeconomics, government, biology, and physics— top the list of challenging classes at Central Gwinnett High School. In 1999, Central Gwinnett students took a total of 45 AP exams. In 2010, CGHS students completed almost 1,000 AP exams. While AP classes provide a college-level experience, every class at Central offers a challenging curriculum and prepares students for a rigorous End of Course Test (EOCT) or a comprehensive final examination. Benchmark testing throughout the semester ensures that students are learning the curriculum and provides the teacher and student with an opportunity to adjust the teaching and learning processes during the semester to best meet the individual needs of each student.

Teachers identify students who may need extra assistance to be successful on key assessments or in their courses. Intervention classes are offered during the school day and after school to help students who need more time to master the curriculum. Our Credit Recovery program, tutoring programs, and assessment intervention classes help students stay on track for graduation.

CGHS was recognized by *Newsweek* and *U.S. News and World Report* magazines as one of America’s best high schools. CGHS also was honored as an AP Honor School and as a Georgia Title I Distinguished School. We attribute these successes to our dedicated teachers who challenge our students to achieve at the highest levels.

# Central Gwinnett High School

## Other 2009–10 Highlights...

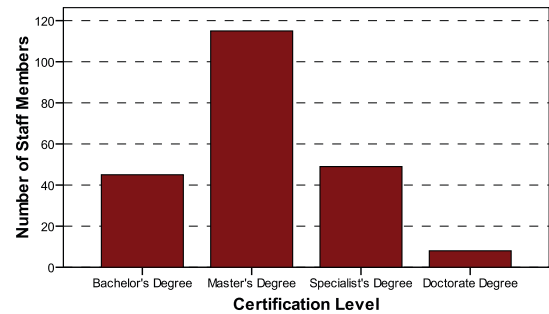


*Gwinnett County Public Schools is the 2010 winner of The Broad Prize for Urban Education, the country's most prestigious honor for K–12 education.*

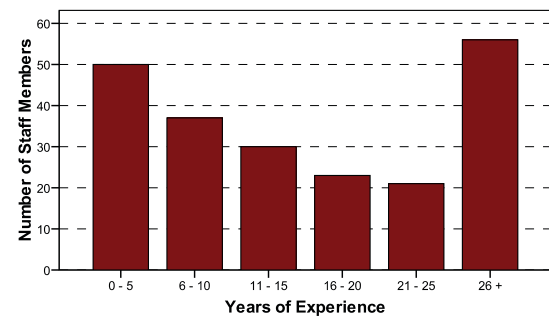
- For the fifth year, Central Gwinnett High School was named one of the “1,000 Best High Schools in America” by *Newsweek* magazine.
- *U.S. News and World Report* named CGHS on the magazine's list of “America's Best High Schools.”
- CGHS was recognized for the second year as an Advanced Placement Honor School by the Georgia Department of Education.
- Central Gwinnett received the National Beta Club Award in celebration of our chapter's 75th anniversary.
- Central students were offered more than \$5 million in scholarships, not including the HOPE Scholarship.
- The Scholar's Bowl Team finished 2nd in the GCPS Championship and 1st in the North Georgia Academic Tournament, and qualified for two national tournaments.
- The Black Knight Band finished 1st in Class and 1st in Division at the Georgia Contest of Champions, and took 2nd in Class and 3rd in Division at the Georgia Bandmasters Championships.
- Central's boys' varsity basketball team made the Georgia High School Association's Final Four, finished 3rd in the State Tournament, and was Region 8–AAAAA Champion.
- The 9th grade boys' basketball team was Region Champ for the third consecutive year.
- Sixteen student athletes earned college athletic scholarships.
- Our students developed a “Kindness Counts Company” which was featured on 11 Alive Class Act News.

## 2009–10 Staff Data

Staff Certification Level



Experience in Education



## 2009–10 Student Data

	School Year
	09–10
<b>Enrollment</b>	2,672
+American Indian/Alaskan Native*	1%
+Asian*	7%
+Black/African American*	40%
+Hispanic or Latino, any race	28%
+Multiracial, two or more races*	5%
+Native Hawaiian/Pacific Islander*	0%
+White*	20%
Special Education	14%
ESOL	5%
Free/Reduced Lunch	67%
Average Attendance	94%

*+ Reflects changes in ethnic and racial designations set by the federal government. As a result, 2009–10 data is not comparable to ethnic and racial categories from previous years and is reported for one year only.*

*\*Not Hispanic or Latino*

## School Safety Perceptions

Based on responses to 2009–10 RBES Perception Survey...

- 57.7% of students agreed or strongly agreed that they felt safe at Central Gwinnett High.
- 85.3% of parents agreed or strongly agreed that their student's school was safe.

*\*Reflects voluntary responses to parent and student perception surveys.*

*The mission of Gwinnett County Public Schools is to pursue excellence in academic knowledge, skills, and behavior for each student, resulting in measured improvement against local, national, and world-class standards.*

**Central Gwinnett High School**  
564 W. Crogan Street • Lawrenceville GA 30046  
(770) 963-8041 • [www.centralgwinnett.net](http://www.centralgwinnett.net)  
Nancy Martin, Principal

**Gwinnett County Public Schools**  
437 Old Peachtree Rd., NW • Suwanee, GA 30024-2978  
[www.gwinnett.k12.ga.us](http://www.gwinnett.k12.ga.us)

### 2010 Gwinnett County Board of Education

Dr. Mary Kay Murphy, 2010 Chairman;  
Dr. Robert McClure, 2010 Vice Chairman;  
Carole C. Boyce; Louise Radloff; and Daniel D. Seckinger,  
J. Alvin Wilbanks, CEO/Superintendent