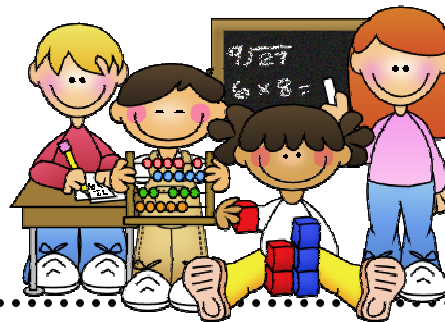


5th Grade Math Moments for Families



Unit 4 B Students will:

- Add and Subtract Fractions with unlike denominators
- Add and subtract Mixed numbers with unlike denominators
- Divide a fraction by a whole number
- Divide a whole by a fraction

(Student must be able to recognize models and construct rules regarding the topics above)

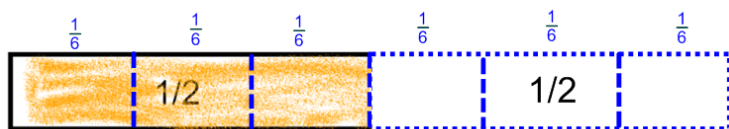
Vocabulary:

- * **Numerator**-The top number in a fraction; It tells how many equal parts are described in a fraction.
- * **Denominator**-The bottom number in a fraction; It tells how many equal parts the whole is divided up into.
- * **Equivalent**- Having the same value
- * **Improper Fractions**-A fraction larger than one whole whose numerator is larger than or equal to the denominator
- * **Mixed Number**- A number with an integer part and a fraction or decimal part (ex. 3.25 or $3\frac{1}{4}$)



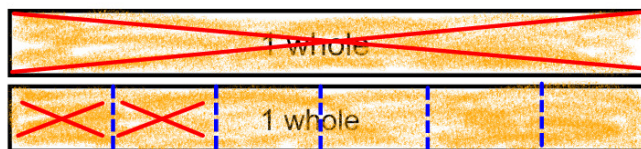
Strategies to help your child with homework:

$$\frac{1}{6} + \frac{1}{2} = \frac{4}{6}$$



Students will take the fraction tiles $\frac{1}{2}$ and $\frac{1}{6}$. The fraction tile $\frac{1}{2}$ will be cut into sixths. Students will then count up all the $\frac{1}{6}$'s.

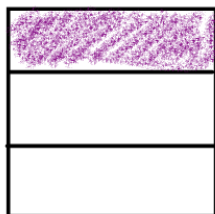
$$2\frac{1}{6} - 1\frac{1}{2} = \frac{4}{6}$$



Students will divide 1 whole into $\frac{6}{6}$, and then cross out $1\frac{3}{6}$ ($1\frac{1}{2}$).

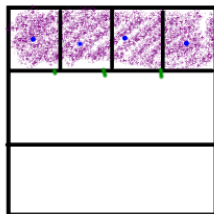
$$\frac{1}{3} \div 4 = \frac{1}{12}$$

After a birthday party, $\frac{1}{3}$ of a large cake was left.



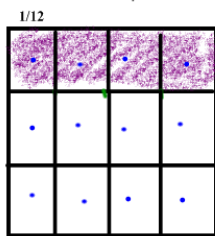
BEFORE

If the leftover cake was shared equally among 4 people.

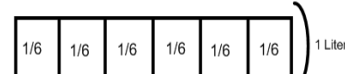
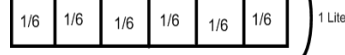
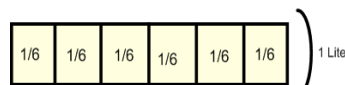


MIDDLE

What fraction of the whole cake did each person receive?



AFTER



A bowl holds 5 Liters of water. If we use a scoop that holds $\frac{1}{6}$ of a liter, how many scoops will we need to fill the entire bowl?

$$5 \div \frac{1}{6} = 30$$

Helpful Websites:

- <http://www.mathplayground.com/>
- <http://www.coolmath.com/>
- <http://www.math-play.com/>

