

**BACK TO SCHOOL
EDITION!**

EMERY ELEMENTARY NEWS

From the Head Teacher, Dr. Petra M. Horn-Marsh



Welcome back everyone!

We look forward to another great year of learning and growing! This year, there are some exciting changes to promote student learning and growing in language, academics and socio-emotion. Also, there are several new faces: students, teachers and staff. Please do take the time reading through this Welcome Back edition to familiarize yourselves with the exciting changes and to provide your child with the support for them to succeed this year.

In addition to our approach of student groupings based on their academic abilities in Language Arts and Mathematics, there are a few changes in the student grouping approach in Homeroom classes to meet the learning and growing needs of individual students. This way student potential can be maximized linguistically, academically and/or socioemotionally. We also have enhanced our system of Positive Behavior Intervention Supports. This is explained in detail on page 4 in this special newsletter edition.

As for students' academic support, study skills and social skills, we have built-in Homeroom time at the end of the school day for 20 minutes every day. It is a good way for students to end their school day with their Homeroom teacher. During the Homeroom time, students review what is expected of them in completing their homework, finish up and/or fix their school work, receive social skills instruction, learn school and homework study skills, and/or further develop social skills.

We want to see each student to thrive as students and citizens. We also want increased school-home collaboration and involvement. We hope you are as excited as we are about the changes and about the new school year commencing! Let's have another awesome year of learning and growing!

Contacts:

Emery Hall Office:

Petra M. Horn-Marsh, PhD
Head Teacher
phornmarsh@kssdb.org

Valerie Watson
Senior Administrative Assistant
vwatson@kssdb.org
913-210- 8137 (V)

Dorm:

Mary Hughes– Dean
913-324-5837 (VP)
mhughes@kssdb.org

KSD Health Center:

Cathy Reynolds
913-210-8163
creynolds@kssdb.org

Superintendent:

Luanne Barron
913-210-8112
lbarron@kssdb.org

Barron named as 29th Superintendent of KSD

Last July 2018, the Board of Education has appointed Ms. Luanne Barron as the 29th superintendent of the Kansas School for the Deaf.

Ms. Barron is the fourth Deaf person and the first Deaf woman to hold the position since KSD is established in 1861. Let's give her a big Jackrabbit congratulations!



Welcome New Staff!



Stephanie Koehler
Early Childhood
Teacher

Stephanie is so excited to be the early childhood teacher here at KSD. She has been an interpreter for 15 years. Stephanie worked at FSDB for 4 years as a para educator and substitute teacher and most recently a deaf educator for Blue Valley. She has an Associates in Interpreting, a Bachelors in Special Education, and Masters in Deaf Education.

Stephanie lives in Lawrence with her husband Chris and our two boys Elliot, 6 and Arlo 3. Some of her favorite things are; iced coffee, a good book, Target, and doing yoga.



Rachelle Hirsch
Center- Based
Program Teacher

Rachelle is a teacher for the Center-Based Program here at the elementary school at Kansas School for the deaf. She is a wife and a mother of 4 children. Rachelle has been working at KSD for six years as a substitute teacher as she raised her children. Rachelle has a medical background and is currently working on her masters in Special Education.

Rachelle enjoys spending time with her family, playing tennis and golf, and is passionate about her 2 boxer puppies!



Nicole Conrad
5th Grade Teacher

Nicole is a first year teacher at Kansas School for the Deaf, teaching 5th grade. Before that, She was a substitute teacher for the last 2 years at KSD. She earned her Elementary Teaching degree at MidAmerica Nazarene University in Olathe, KS. Before that, she attended Lenoir Rhyne University and graduated with a BA in Child and Family Intervention with an English minor.

Nicole's hobbies are gardening, and spending time with her pugs, a 10-year old Molly and a 19-week old Bernie.



Ruby Gonzales
Bilingual
Specialist Assistant
ASL & Deaf
Studies Teacher

After graduating from a residential school, Ruby attended Gallaudet University and majored in Psychology. She then received a master's degree in Deaf Education at Lamar University. Recently Ruby graduated with a master's plus degree from Texas State University in Educational Leadership program, a fabulous program! (Ruby said it). In the past, as a K-12 teacher, she worked in a several mainstream programs and a few of residential placements on all grade levels, except Kindergarten and 1st grade. Also, as an American Sign Language Instructor, she taught at various colleges/ university.



Cathy Reynolds
Senior
Registered
Nurse

Cathy has been a nurse for over seven years and all of those have been as a school nurse and a pediatric psych nurse. Cathy is a proud Kansas City girl, but she would trade the winters for something warmer.

Cathy's hobbies include: outdoor activities, dancing, road trips and reading. She very recently went skydiving for the first time and it was both scary and thrilling. Cathy said she is very happy to be at KSD and welcomes any help on her journey to learning how to sign.



Tessa Adcock
Dietitian

Tessa is excited to join the KSD team as the Food Service Director! Tessa comes to KSD with a passion for school nutrition. Other than food, some of her favorite past times include biking, baking, reading and gardening. She lives in Lenexa with her husband and son.

Please stop by the kitchen or her office anytime to talk about food, nutrition, or just to chat!

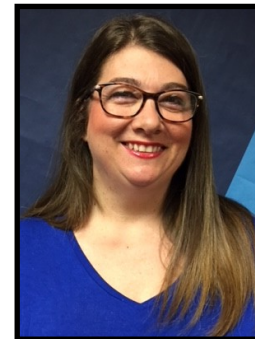
Welcome New Paraprofessionals!



Lilly Heller
1-1 District Para



Melissa Nix
1-1 District Para



Stephanie Wilcox
1-1 District Para

New Library Media Specialist

Ms. Beth Beadle has become the new Library Media Specialist at KSD last May after Mona Huggins retired as the Librarian in 2017. Ms. Beadle's duties as Library Media Specialist include: Running the elementary and secondary libraries, teaching library and digital media classes in elementary and secondary schools, and working closely with the IT department on Chromebook and iPads.



New Occupational Therapist

Her name is Lauren Burrer and she has been a practicing Occupational Therapist for 9 years. She spent the first 5 years as a traveler doing 13 week contracts across the county in a variety of settings, and the last 4 in the school system in Texas. Her husband and she moved to Missouri at the end of July with their two children and their pets, and they are loving all of the family activities, parks, and the cooler weather! She is looking forward to working with the students and staff here at KSD!

Positive Behavior Intervention Supports

In elementary school, we have school wide rules and classroom expectations. Within each, there is a system of supports to recognize and reward students for abiding school wide rules and following classroom expectations. In this article, you will learn more of our Positive Behavior Intervention Supports (PBIS) for you to review with and support your child.

The pillars of PRIDE represent school wide rules. Each letter stands for an important skill to have:

P = Preparation (e.g., coming to class ready with completed homework, a pencil and an agenda book)

R = Respect (i.e.: following staff instructions, respecting others and their property, and using appropriate manners)

I = Independence (each student's ability to independently follow classroom expectations)

D = Diversity (individual students share, include all peers, and show kindness to everyone regardless of gender, race, creed or preference)

E = Effort (working to their best potential)

Each classroom has expectations that students follow. Kindergarten – 2nd Grade and Center-Based Program classrooms use Movement Activity and Communication (MAC), and Grades 3-6 classrooms outline Communication Help Activity Movement Participation and Success (CHAMPS) for each activity and transition. They help remind students of what to do for the class and/or activity. To reinforce positive student behavior, each classroom uses the Behavior Column throughout all classes and activities. At the end of every class, staff will quickly review PRIDE for transition to next class/activity.

The Behavior Column has a total of 7 parts: Outstanding, Great Job, Good Day, Ready to Learn, Think About It, Teacher's Choice, and Parent Contact. At the start of each class hour, all students' names are placed on the "Ready to Learn" part. There are rewards in the Behavior Column:

Outstanding = earn 3 pennies

Great Job = earn 2 pennies

Good Day = earn 1 penny

Think About It = do 5-point scale/zones of regulation

Teacher's Choice = lose 1 penny and/or get a consequence

Parent Contact = lose 2 pennies and contact parent(s)



Jackrabbit Tickets are still being given out but by ASL/Deaf Studies teacher, PE teacher, Art teacher, para educators, other service providers. Students may exchange them for a penny. Students then can take the tickets home or decorate their bedroom, locker, or dorm room. There will be no Jackrabbit Drawings.

Instead we will have weekly PBIS activities. First Friday, we will recognize two students (one from the K-2 & Center-Based Program group and another one from the Grades 3-6 group) for Students of the Month, and they will enjoy special rewards. Second and Fourth Fridays, we will have positive behavior recognitions (more information coming soon), and third Friday, we will have an incentive activity with all students.

We believe that by recognizing good behavior makes following school wide rules and classroom expectations more positive and desirable for the students. Your child's teacher may have already explained to you their classroom expectations. If you have questions, concerns or comments, please do not hesitate to contact your child's teacher. Let's have a phenomenal PRIDE year!



Learning American Sign Language will open up a whole new world!

ASL CLASSES AT HOME!

For families with DHH children
(birth to age 12) who cannot attend KSD
campus classes due to distance (25 mi).

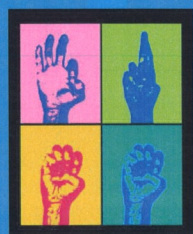
- Weekly classes online from August to May
- Join at any time!
- Need high-speed internet and a webcam

To register, contact Anthony Bishop,
ABishop@Kssdb.org, 913-324-5889



Family Signs Kansas

Don't be Shy!



Free

Fits Your Schedule



MUSEUM
OF
DEAF
HISTORY, ARTS & CULTURE®

Join us for our Grand Opening September 21, 2018

We are excited to announce the opening of our new Art Gallery
in honor of Chuck Baird.

Please join us in the Ribbon Cutting Ceremony

5:00 PM to 7:00 PM

*Ribbon Cutting at 6:00 pm

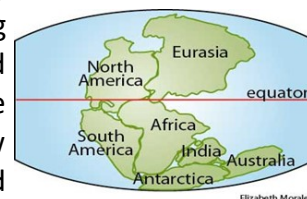
Museum of Deaf History, Arts and Culture
455 E. Park Street
Olathe, Kansas

Wine/Drinks & Hors d' oeuvres



Extended School Year 2018 a Success!

The theme for the Extended School Year (ESY) program at Kansas School for the Deaf was *From Pangaea to Continents*. From June 11th to June 29th, 84 students from Early Childhood Center through Secondary School enjoyed learning about Pangaea and Continents. *From Pangaea to Continents* showed the process of land shifts from plate tectonics, fossils, ancient seas, ancient ecosystems, biodiversity and distribution of living organisms. Those different sub-themes being taught during ESY were illuminated through our integrated language art, math and content area classes, field trips and experiential activities for our students. The students and staff really enjoyed learning about Pangaea & Continents, and we saw that students really got the concept of how Earth's land changed and how it affected our environments and living organisms. The next Extended School Year program will be held June 10th through June 28th, 2019.



Picture Day is Coming!!

Tuesday, September 11th, 2018



Picture Re-take: October 30th, 2018

Welcome New Students!

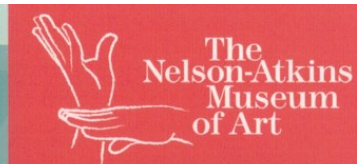
Brooklyn Caldwell (ECC)
Kyrie Christensen (ECC)
Heleyna Rock (ECC)
Timothy Mejia (3rd Grade)
Mary Christensen (4th Grade)
Maddie Brooks (5th Grade)

Want to keep up with Emery Hall News?

Go to our Facebook page and
request to be added at this link:

[https://www.facebook.com/
groups/KSDeafElementary/?
ref=group_cover](https://www.facebook.com/groups/KSDeafElementary/?ref=group_cover)





Deaf
CULTURAL FESTIVAL



SATURDAY, SEPTEMBER 8
10 a.m. – 4 p.m.

**The
Nelson-Atkins
Museum
of Art**

4525 Oak Street,
Kansas City, Missouri 64111

Non-Profit
Organization
U.S. Postage
PAID
Kansas City, MO
Permit #897

JOIN us for a **FREE** family festival celebrating American Sign Language (ASL) during Kansas City's Deaf Cultural Month. All are welcome!

EXPLORE ASL on an Art Walk through the galleries.

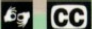
ENJOY hip-hop in ASL from hard of hearing artist Matt Maxey of Deafinitely Dope — the former ASL interpreter for Chance the Rapper.

EXPERIENCE Shakespeare like never before from Deaf performer Crom Saunders.

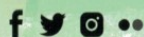
WATCH poetry and familiar stories come to life in ASL by the students from Kansas School for the Deaf and storyteller Stephanie Wilcox.

TOUR the *Wendell Castle: Shifting Vocabularies* exhibition, presented in ASL with voice interpretation.

CONNECT with Deaf art through hands-on art activities with Deaf artist Cicely Boga.

ASL interpretation, voice interpretation, and live captioning provided. 

Details at nelson-atkins.org/festivals.

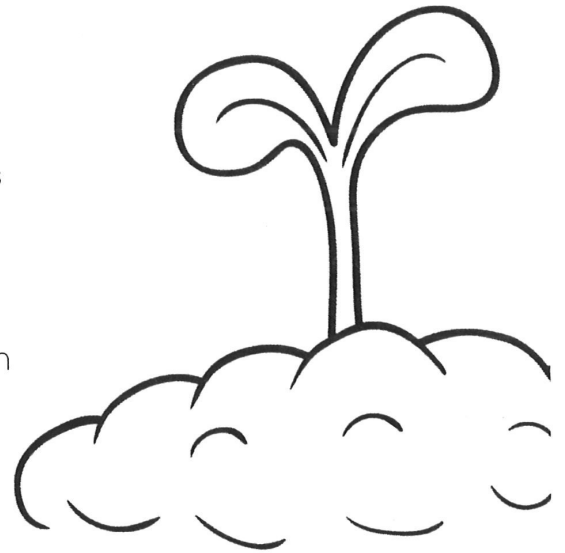


A special thanks to Kansas School for the Deaf, Museum of Deaf History, Arts, and Culture, and The Whole Person

growth mindset

what is it?

We used to think that our intelligence was fixed – meaning we were either smart or we weren't. Scientists have proven again and again that simply is not true. Our brain acts like a muscle – the more we use it, the stronger (and smarter) our brain becomes.



IS YOUR MINDSET FIXED?

A person with a fixed mindset may do these things:

- avoid challenges
- give up easily
- ignore feedback
- become threatened by other people's success
- try hard to appear as smart or capable as possible

WHAT DOES A GROWTH MINDSET LOOK LIKE?

A person with a growth mindset may do these things:

- embrace challenges
- give their best effort
- learn from feedback
- become inspired by other people's successes
- believe their intelligence can change if they work hard



growth mindset

ways to help your child

TALK ABOUT IT

Talk with your child about his or her day, but guide the discussion by asking questions like:

- Did you make a mistake today? What did you learn?
- What did you do that was difficult today?

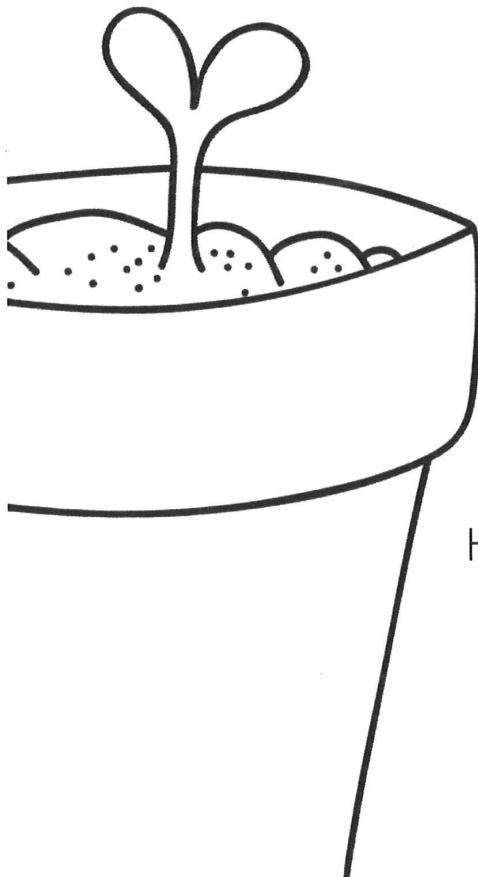
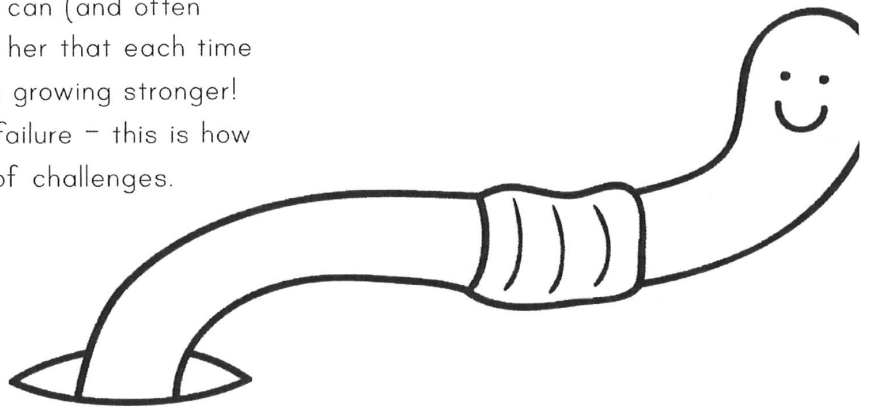
ENCOURAGE FAILURE (say what?!)

Your child needs to know that failure can (and often does) happen and **it is okay!** Remind her that each time she fails and tries again, her brain is growing stronger! Don't step in to prevent your child's failure – this is how she learns to persevere in the face of challenges.

PRAISE THE PROCESS

Instead of saying, "You're so smart!" praise effort, goal setting, persisting through challenges, or being creative. You can say something like:

- "Wow! You must have worked really hard on this!"



THE BRAIN CAN GROW!

Remind your child that **his or her intelligence is not fixed.** Remind her that when things are difficult, her brain grows if she persists through the challenge. Each time she learns something new, her brain is making new connections. Your child needs to know this is possible!

HELP THEM CHANGE THEIR DIALOGUE

The way your child talks to himself makes a huge impact on his mindset. If he says, "This is too hard!" help him change that to "I can't do this yet, but I will keep trying." Give him the words to say when he is feeling defeated by modeling it yourself!