


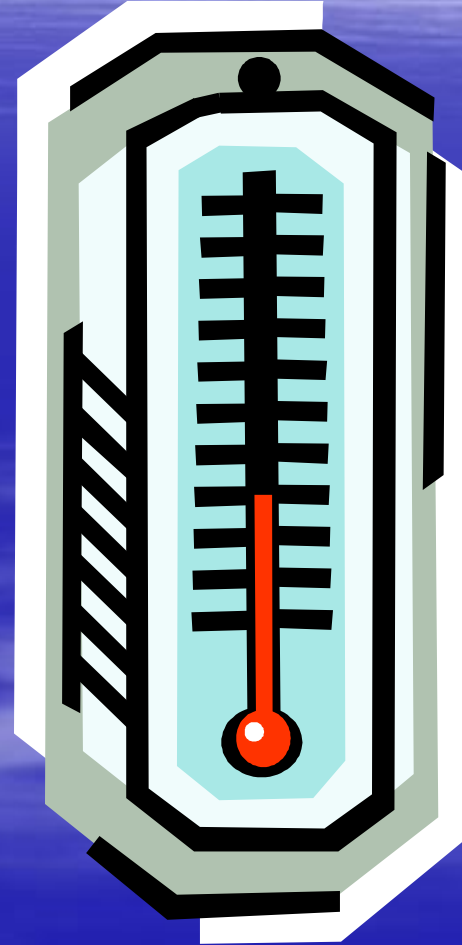
Weather

# What is weather?

- ☀️ Refers to the state of the atmosphere at a specific time and place.
- ☀️ The one thing that you can talk to anybody about
- ☀️ If you don't like the weather just wait around it will change in Kentucky
- ☀️ What are some of the factors that affect the weather?

# Air Temperature

 Temperature is the measure of the average amount of motion in particles.



# Wind

a natural movement of air of any velocity;  
*especially* : the earth's air or the gas surrounding a planet in natural motion horizontally



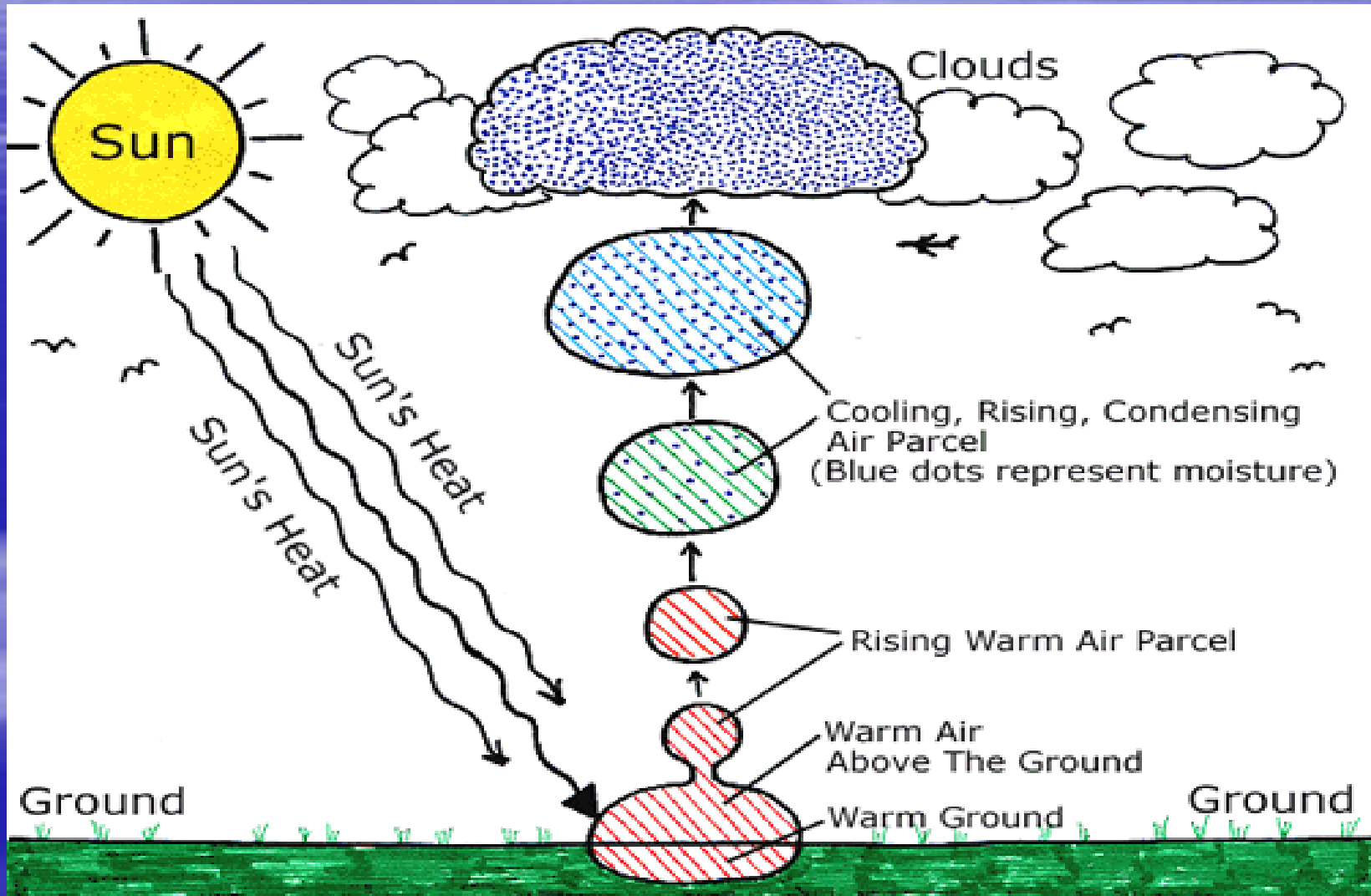
# Humidity

- The amount of water vapor present in the air
- Relative Humidity -is a measure of the amount of water vapor present in the air compared to the amount needed for saturation at a specific temperature

# *Clouds*

- Masses of small water droplets or tiny ice crystals that float in the air.
- Three main types are cirrus, cumulus, and stratus.
- Other clouds are a mixture of these three main types.

# Cloud Formation



# Precipitation

- Water that falls from the clouds
- Air temperature determines the form of precipitation that falls
- 4 main types of Precipitation: Rain, Sleet, Snow and Hail



# ***TYPES OF PRECIPITATION***



***RAIN***



***SLEET***



***SNOW***



***HAIL***

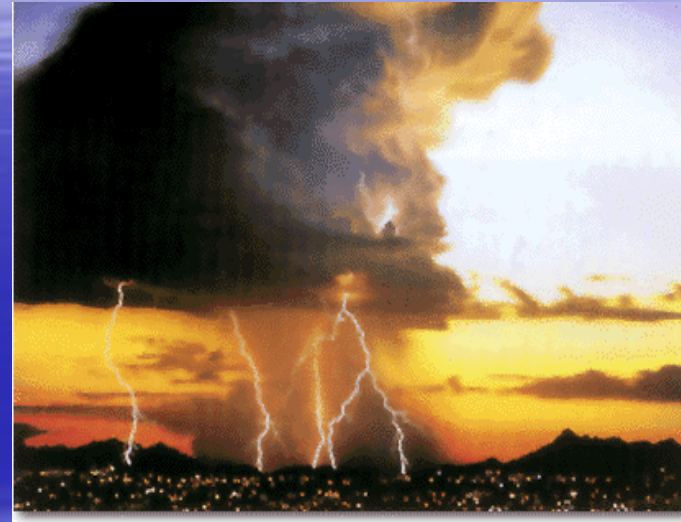


# Severe Weather

## ***THUNDERSTORMS***



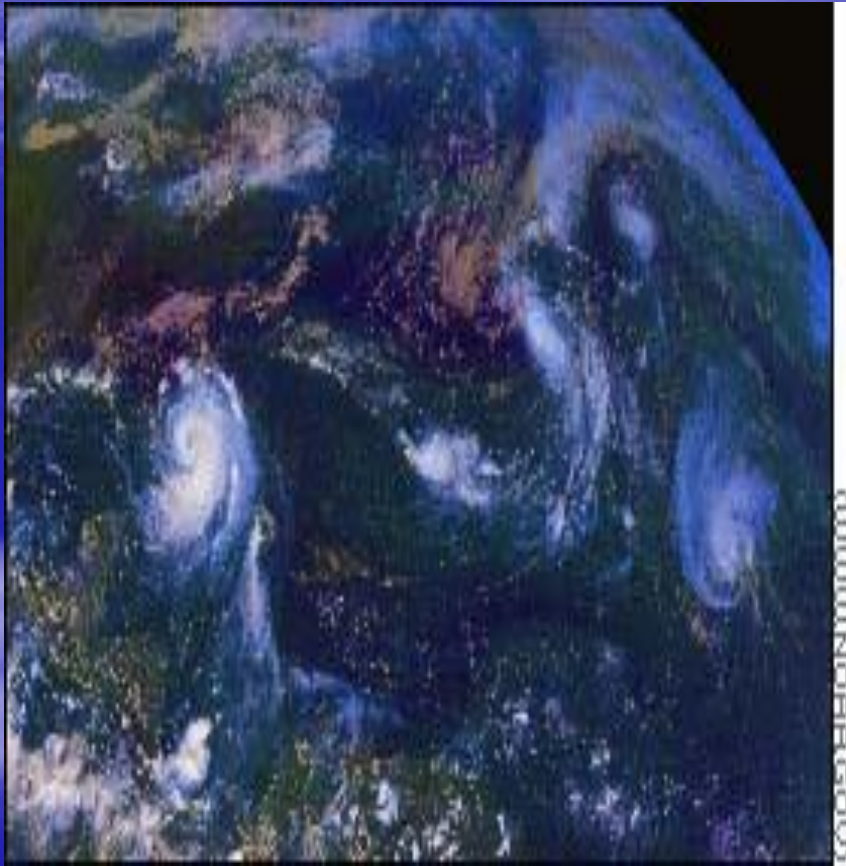
## ***LIGHTNING***



## ***TORNADOES***



# More Severe Weather



***HURRICANES***

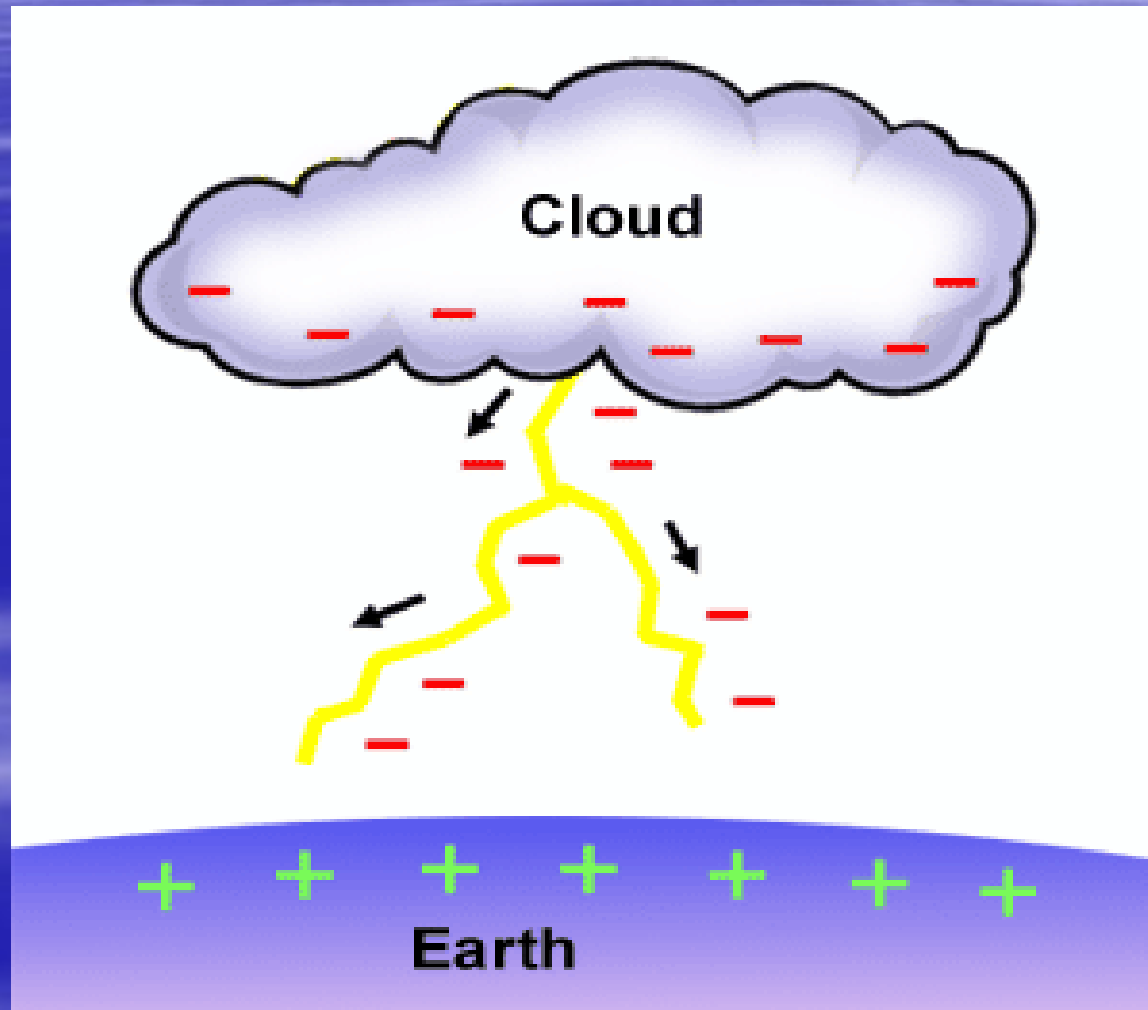


***BLIZZARDS***

# Severe Weather Safety

- Watches- conditions are favorable
- Warnings- conditions already exist
- Examples- Tornadoes, Flooding, Thunderstorms, Blizzards, Winter Mixes and Hurricanes

# Lightning

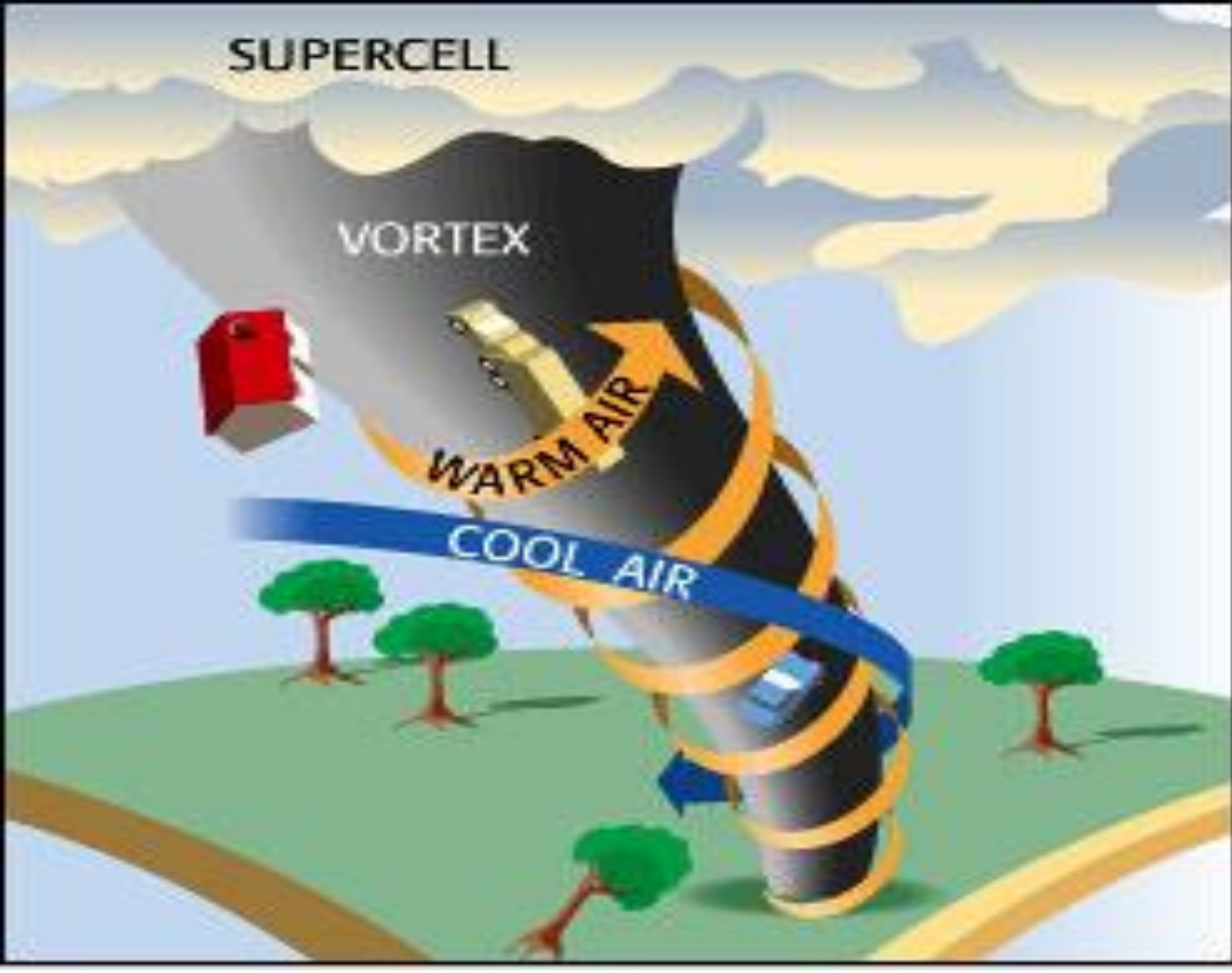


SUPERCELL

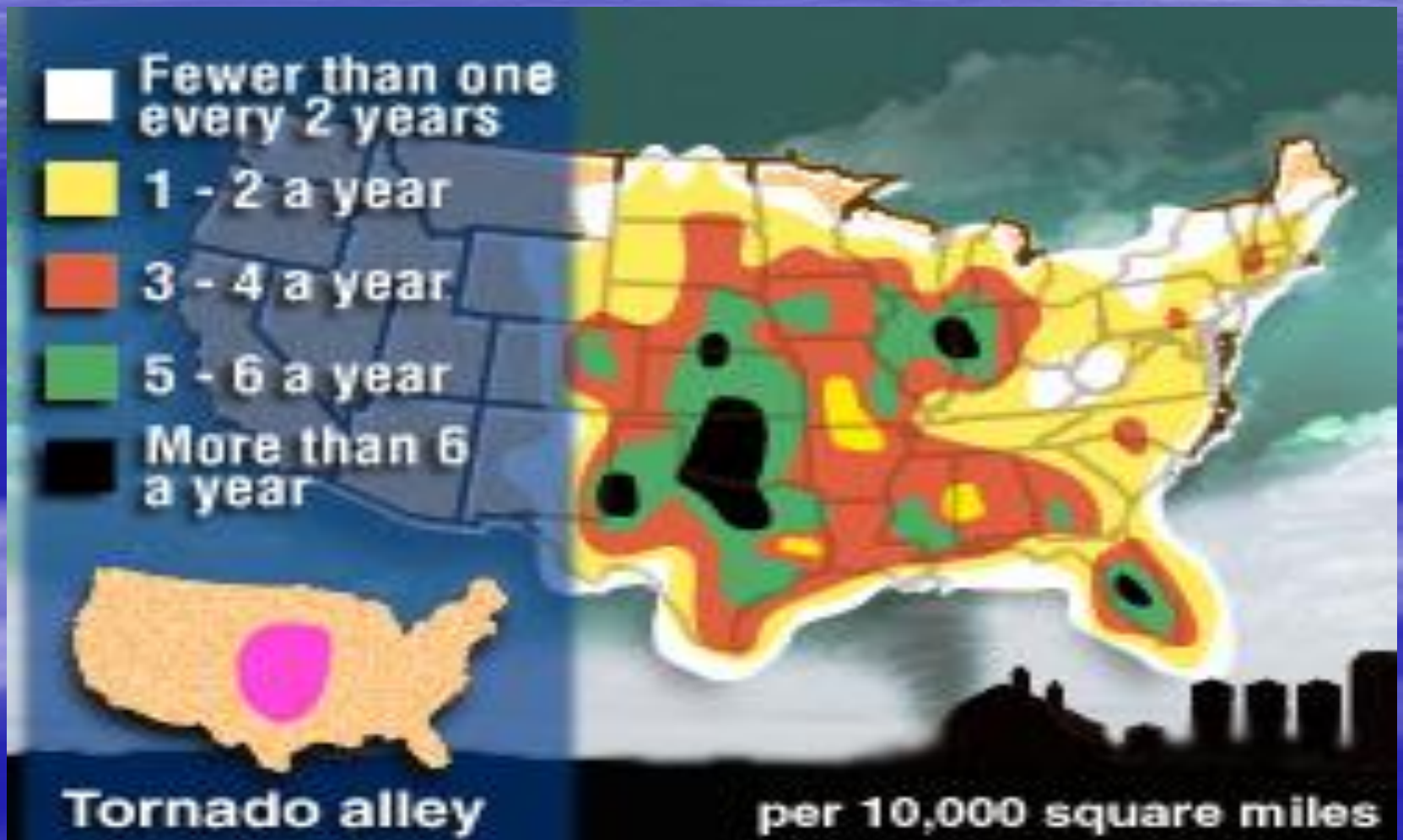
VORTEX

WARM AIR

COOL AIR



# Tornado Alley

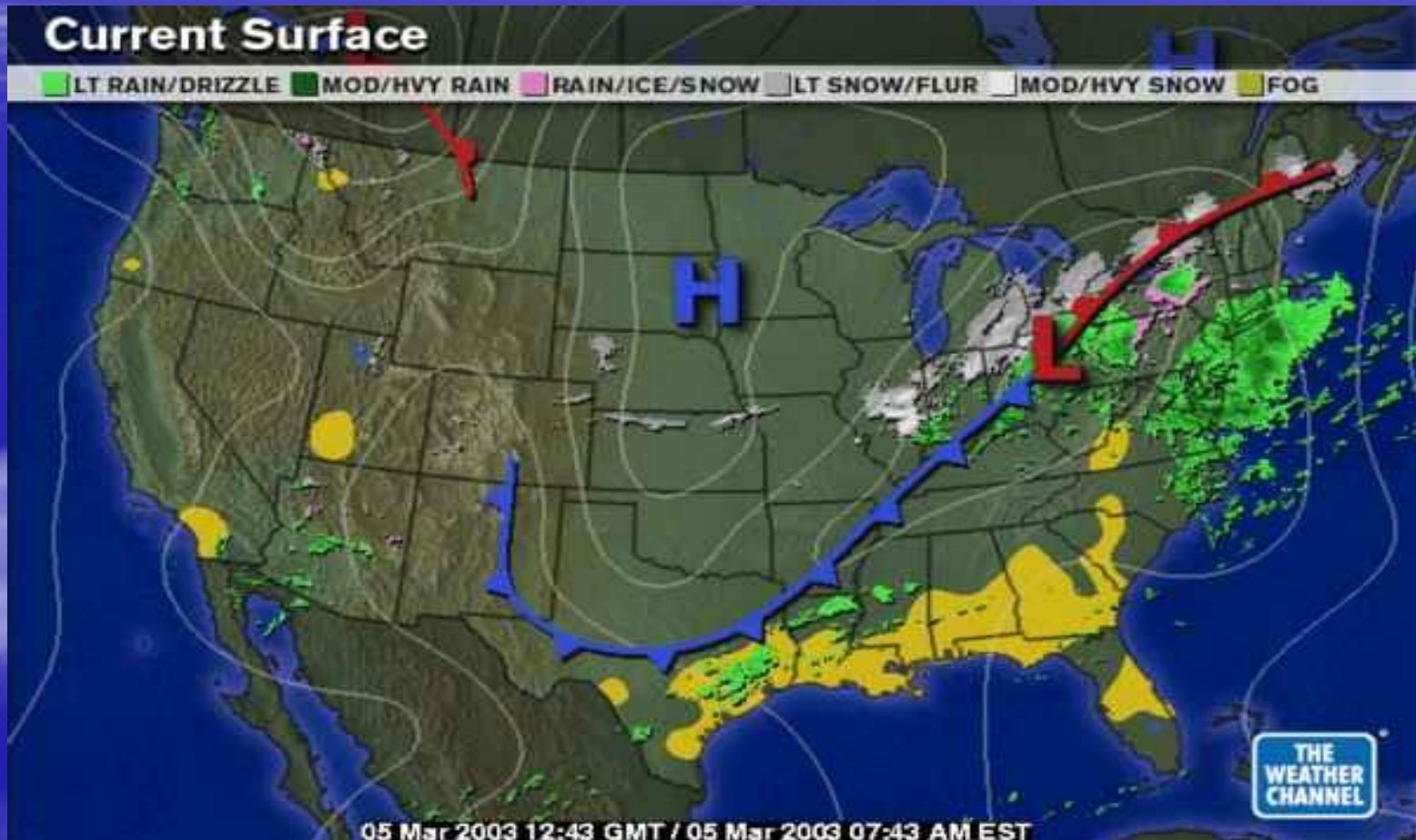


TCR 01:39:52:18

3-4520  
3-4521  
StormStock  
Reel #9/95



# Weather Map



# Hurricane



# HURRICANE SCALE



## HURRICANE SEASON

JUNE 1st - NOVEMBER 30th (ATLANTIC/GULF)

	Winds	Storm Surge	Barometric Pressure
CATEGORY 5	Over 155 mph.	Over 18 ft.	27.17" or less
CATEGORY 4	131 to 155 mph.	13 ft. to 18 ft.	27.17 to 27.90"
CATEGORY 3	111 to 130 mph.	9 ft. to 12 ft.	27.91 to 28.49"
CATEGORY 2	96 to 110 mph.	6 ft. to 8 ft.	28.50 to 28.93"
CATEGORY 1	75 to 95 mph.	4 ft. to 5 ft.	28.94" or more

**TROPICAL STORM:** Sustained winds: 39 to 73 mph.  
(Follow your local emergency instructions)



# Hurricane Charley

