

Martin Luther King, Jr. Elementary School's Non Traditional Instructional Expectations

K-6th Grades

The Legend of the Poinsettia

Course/Subject: Related Arts

Teachers: M. Adams, C. Johnson, D. Pope, A. Gray

NTI DAY #1

The Legend of the Poinsettia retold and illustrated by Tomie dePaola

Learning Target: ELA:RL:2 I will determine central ideas or themes of a text. I will summarize key supporting details and ideas.

Lesson Directions: Watch and listen to the online story:

[https://www.youtube.com/watch?](https://www.youtube.com/watch?v=8s0C5V4OB18&list=PLUz86UwQ5OpuJcw6Rve_45Zq5gkuxVmp6)

[v=8s0C5V4OB18&list=PLUz86UwQ5OpuJcw6Rve_45Zq5gkuxVmp6](https://www.youtube.com/watch?v=8s0C5V4OB18&list=PLUz86UwQ5OpuJcw6Rve_45Zq5gkuxVmp6)

Summary: In Mexico, the poinsettia is called *flor de la Nochebuena* flower of the Holy Night. At Christmastime, the flower blooms and flourishes, the quite exquisite red stars lighting up the countryside. This Mexican legend tells how the poinsettia came to be, through a little girl's unselfish gift to the Christ Child. Beloved Newbery honor-winning author and Caldecott honor-winning illustrator Tomie dePaola has embraced the legend using his own special feeling for Christmas. His glorious paintings capture not only the brilliant colors of Mexico and its art, but also the excitement of the children preparing for Christmas and the hope of Lucida, who comes to see what makes a gift truly beautiful.

NTI DAY #2

Technology

Learning Targets: ISTE3B I will apply digital tools to locate, gather and apply information.

Lesson Directions: Research the poinsettia on

<http://people.howstuffworks.com/culture-traditions/holidays-christmas/christmas-poinsettia1.htm> and answer your grade level question. (Challenge yourself by finding the answer to other grade levels questions.)

K—What color are the Mexican weeds? _____

1st—What year was the poinsettia introduced to America? _____

2nd—Who brought the poinsettia to the United States?

3rd—When is National Poinsettia Day? _____

4th— What is the Spanish name for poinsettias?

5th— What does the Spanish name for the flower mean?

6th—Where do poinsettias grow?

NTI DAY #3

MUSIC

Learning Targets: N.CPP2 I can identify some common practices related to home and community like of other cultures and my own. Music Anchor Standard 11: I can relate artistic ideas and works with societal, cultural and historical context to deepen understanding.

Lesson Directions:

Listen to the song Las Posadas. Las Posadas is a nine-day celebration of the journey that Mary and Joseph made on their way to Bethlehem that is celebrated in Southwest United States and Mexico.

Listen to the song Feliz Navidad. Feliz Navidad is a Puerto Rican Christmas song.

Which Christmas songs do you listen to with your family? Ask your parents why they are important to them and their family.



NTI Day#4

PHYSICAL EDUCATION

Learning Targets: PL-P-LPW-U-2: I will participate participation in regular physical activity has physical, mental and social benefits. PL-P-LPW-U-4 I will determine rules of play for specific games.

Lesson Directions: Watch the Mexican Christmas Games video.

<https://www.youtube.com/watch?v=N7OTmWvDhMY> Play the games with family and friends.

What games do you play with your family? What are some important parts of game rules you need to be successful? Why is it important to learn the rules of the specific game before you begin to play?

NTI Day#5

VISUAL ARTS

Learning Targets: VA Cr1: I will think about an idea and design an art work using my imagination and creative skills.

Lesson Directions: Students will practice drawing the poinsettia. Follow the step by step guide. Add color and maybe some story lines to make a story of your own.

Supplemental Resource and Support:

To Contact School/Teacher for Support:

School Phone: (8:00AM - 3:00PM): (270) 887-7310

Teacher Email: (8:00AM – 3:00PM):

Technology: Melissa.adams@christian.kyschools.us

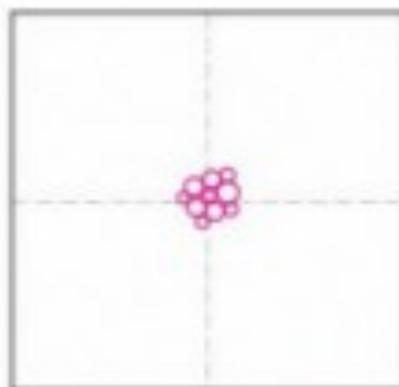
Visual Arts: dawn.pope@christian.kyschools.us

Practical Living: Carla.johnson@christian.kyschools.us

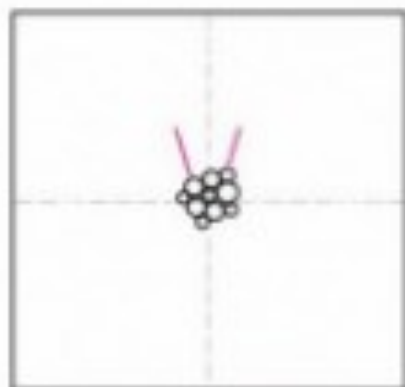
Music: andrea.gray@christian.kyschools.us

*Students will be contacted by a teacher on each NTI day using the phone number provided in Infinite Campus. Please ensure that any changes in phone numbers are reported to the school throughout the year.
REMINDER: Remember that these assignments are due back to the teacher within two school days.

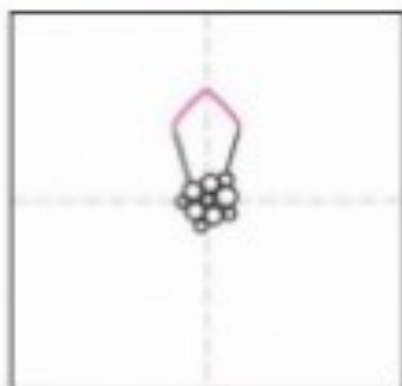
How to Draw a Poinsettia



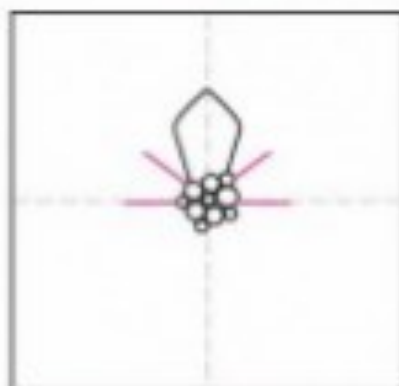
1. Make fold lines. Draw 10 circles.



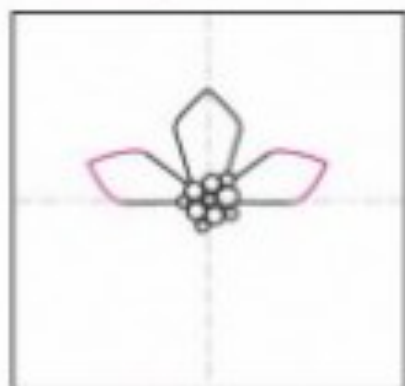
2. Draw two petal sides.



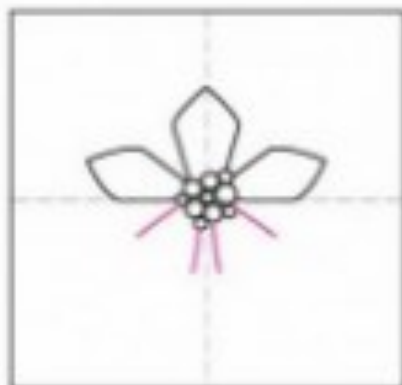
3. Finish petal top.



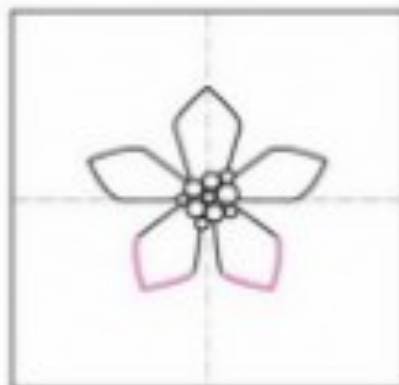
4. Draw four petal sides.



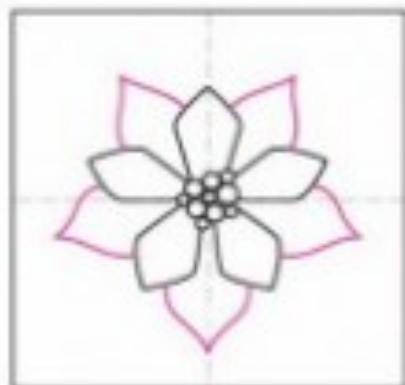
5. Finish petal tops.



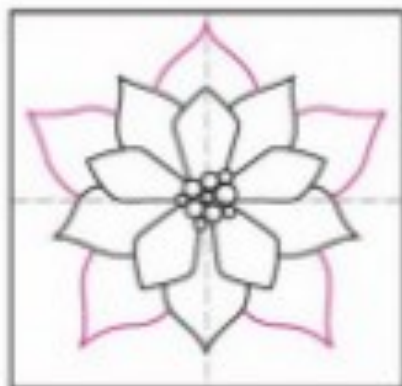
6. Draw four petal sides.



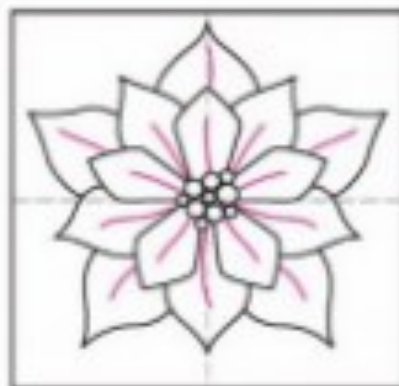
7. Finish petal tops.



8. Draw 5 petals, in between.



9. Draw 5 more petals, in between.



10. Draw center lines in all petals.



11. Add flower leaves.