

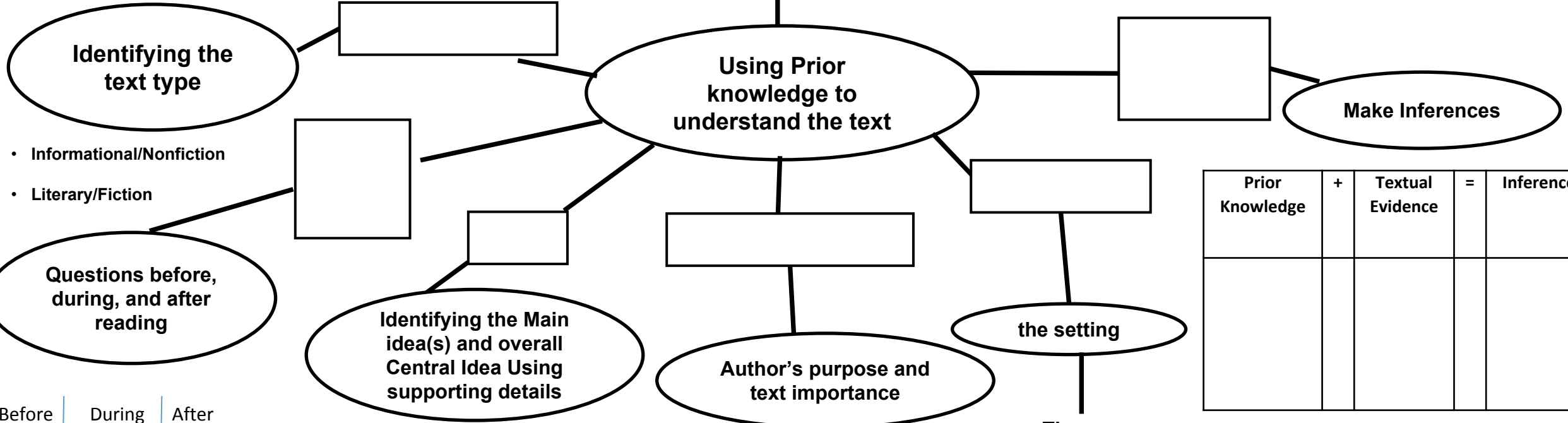
Benchmark Literacy – Unit 1
6.RI.1

Cite textual evidence to support analysis of what the text says explicitly as well as inferences drawn from the text.

Guiding Questions:

- What piece of evidence supports your inference to the explicit meaning of the text?
- Which specific details led you to that conclusion?
- What can you infer from what you have read so far?
- Is this a primary or secondary source?
- What evidence can you cite to support your analysis of the text's meaning?

Inferencing



Before	During	After

• **Central Idea:**

• **Supporting Details:**

(write on back)

• **Author's purpose:** _____

• **I think the author thought _____ is important because** _____

• **Time:** _____

• **Place:** _____

• **What do I know about the setting?(prior knowledge)**

Prior Knowledge	+	Textual Evidence	=	Inference

RI.6.2: Determine a central idea of a text and how it is conveyed through particular details; provide a summary of the text distinct from personal opinions or judgements.

Summarizing

Identifying the text type

- Literary or Informational
- Genre:

Using the most important details in a text to explain the text in your own words

A Summary that includes

- Topic
- Central Idea
- Main Idea(s) & Supporting Details

Asking and answering questions

Before	During	After

Identifying the Central idea of an informational passage

Topic: _____

Central Idea: _____

Supporting Details: _____

Guiding Questions:

- What is the central idea of the text?
- Which details support the central idea?
- What main idea(s) are found in the text?
- How does _____ contribute to the central idea of the text?
- What is a personal opinion? or Judgement?
- Which sentence best summarizes a selection?
- How could you best summarize this selection?
- What makes a good summary?

Point of View

Author's POV:

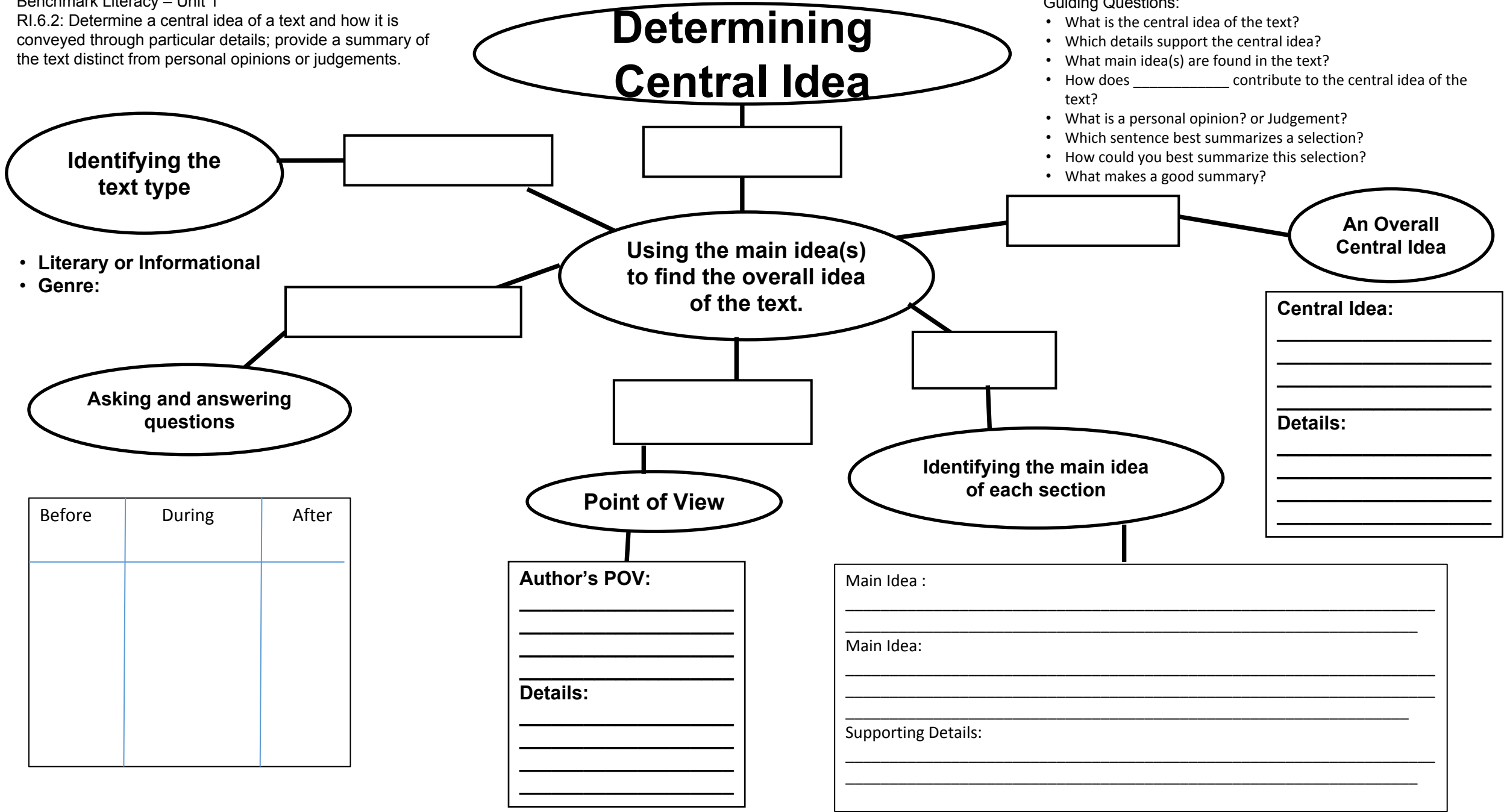
Details:

Benchmark Literacy – Unit 1

RI.6.2: Determine a central idea of a text and how it is conveyed through particular details; provide a summary of the text distinct from personal opinions or judgements.

Guiding Questions:

- What is the central idea of the text?
- Which details support the central idea?
- What main idea(s) are found in the text?
- How does _____ contribute to the central idea of the text?
- What is a personal opinion? or Judgement?
- Which sentence best summarizes a selection?
- How could you best summarize this selection?
- What makes a good summary?



Identifying the text type

- Literary or Informational
- Genre:

Asking and answering questions

Before	During	After

Determining Central Idea

Using the main idea(s) to find the overall idea of the text.

Point of View

Author's POV:

Details:

Identifying the main idea of each section

Main Idea :

Main Idea:

Supporting Details:

An Overall Central Idea

Central Idea:

Details:
