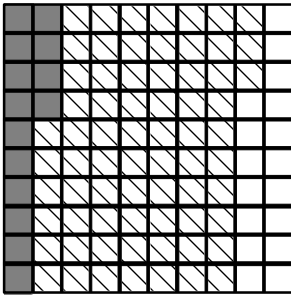


# Day 7 Math 5th Grade Inclement Weather Day Packet

**Objectives: (5 of 5 listed)**

- 223. Compare two decimal numbers through thousandths represented in expanded form
- 224. Compare two decimal numbers through thousandths
- 225. Round a decimal number to a specified place through hundredths
- 226. Add two decimal numbers through hundredths using pictures
- 227. Add two decimal numbers through hundredths using a place value chart

1. Which statement is true?      [A]  $5.11 < 5.122$       [B]  $5.11 > 5.122$       [C]  $5.11 = 5.122$
2. Which statement is true?      [A]  $1.5 < 1.501$       [B]  $1.5 > 1.501$       [C]  $1.5 = 1.501$
3. What is  $0.14 + 0.69$ ? Use the model to find the sum.



- [A] 0.83                      [B] 0.45                      [C] 0.55                      [D] 1.55

4. Round 27.37 to the nearest tenth.      [A] 27.5      [B] 30      [C] 27.4      [D] 27
5. Compare the two decimals given in expanded form. Use  $<$ ,  $>$ , or  $=$ .      [A]  $<$       [B]  $>$       [C]  $=$   
 $2 + 0.5$  ○  $2 + 0.4$

6.

	Tens	Ones	.	Tenths	Hundredths
	1	5	.	4	7
+		1	.	7	6

- [A] 27.23                      [B] 17.23                      [C] 16.13                      [D] 27.33

Day 7 Math  
5th Grade  
Inclement Weather Day  
Packet

7.

	Tens	Ones	.	Tenths	Hundredths
	4	2	.	2	
+	1	8	.	1	4

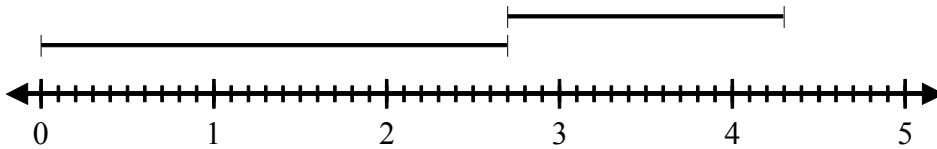
- [A] 60.34                      [B] 61.34                      [C] 50.24                      [D] 59.24

8. Compare the two decimals given in expanded form. Use  $<$ ,  $>$ , or  $=$ .      [A]  $<$     [B]  $>$     [C]  $=$   
 $4 + 0.8 + 0.02$   $\bigcirc$   $4 + 0.02$

9. Round 244.127 to the nearest hundredth.

- [A] 244.10                      [B] 244.13                      [C] 244.12                      [D] 200

10. What is  $2.7 + 1.6$ ? Use the number line to find the sum.



- [A] 1.1                      [B] 0.5                      [C] 4.6                      [D] 4.3

End of Assignment

---