

Solving Equations with Special Cases

Solve each equation.

1) $-7p + 5(-8 + 3p) = -40 + 8p$
 $-7p - 40 + 15p = -40 + 8p$
 $8p - 40 = -40 + 8p$
 $-8p \quad -8p$

 $-40 = -40$
 Infinite Solutions

2) $-4(x - 7) = 20 - 4x$
 $-4x + 28 = 20 - 4x$
 $28 = 20$
 No Solutions

3) $-4x - 13 = -6(x + 3) + 2x$

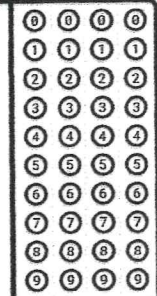
4) $32 + 4a = 4(a + 8)$

5) $40 + 4m = -3(m + 3)$

6) $-35 - 5n = -8(-1 + 6n)$

7) $4x + 24 = 3(1 - x)$

8) $8(x - 7) - 3x = -32 - 3x$



1. 2. 3. 4. 5. 6. 7. 8.

0 0 0 0 0 0 0 0 0 0 0 0 0 0 0 0
 1 1 1 1 1 1 1 1 1 1 1 1 1 1 1 1
 2 2 2 2 2 2 2 2 2 2 2 2 2 2 2 2
 3 3 3 3 3 3 3 3 3 3 3 3 3 3 3 3
 4 4 4 4 4 4 4 4 4 4 4 4 4 4 4 4
 5 5 5 5 5 5 5 5 5 5 5 5 5 5 5 5
 6 6 6 6 6 6 6 6 6 6 6 6 6 6 6 6
 7 7 7 7 7 7 7 7 7 7 7 7 7 7 7 7
 8 8 8 8 8 8 8 8 8 8 8 8 8 8 8 8
 9 9 9 9 9 9 9 9 9 9 9 9 9 9 9 9
 + + + + + + + + + + + + + + + +
 - - - - - - - - - - - - - - - -
 * * * * * * * * * * * * * * * *