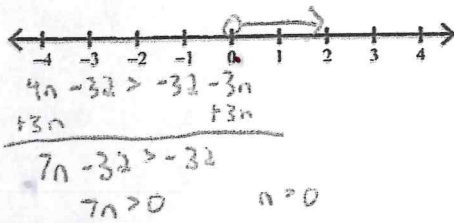


Solving Inequalities with Variables on Both Sides

Solve each inequality and graph its solution.

1) $4(n-8) > -32 - 3n$



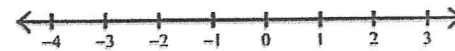
2) $40 + 4k > 2 + 3(4k - 6)$



3) $7(1 + 7x) < -39 + 3x$



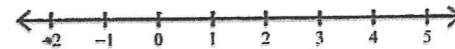
4) $8(1 + 6n) > -32 + 8n$



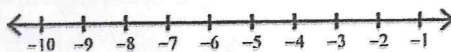
5) $-22 + 3x > -7 + 5(-4x - 3)$



6) $2(4n - 1) - 2n > -2n + 22$



7) $-35 + 8b \leq 2(8b + 4) - 3$



8) $5v - 20 \geq -(2v + 6)$



9) $x - 2 < -2(-3x - 4)$



10) $-38 + 8a \leq 6(a - 7)$

