

# The Newbury Elementary School

## Newspaper

March 13, 2015

Volume 2, Issue 24

### Inside this issue:

Triton District Arts Festival	1
Lost and Found	1
PARCC/MCAS Calendar	1
Fourth Grade Update	2
Kindergarten Registration Letter	3
TWS Press Release	4
TWS Flyers	5
Enrichment Chairperson Opening	5
All School Art Exhibit	
PTA Update	6-7
SEPAC Update	8
Calendar	9
Did You Know?	9

## Triton District Arts Festival

The district Arts Festival took place on Thursday at Triton High School. It was a wonderful celebration of student creativity. We have so many talented students who proudly displayed their work. Thank you to Amy Merluzzi, Laurie Peterson, and Laura Cyr for all of their work preparing our students for such a memorable day!

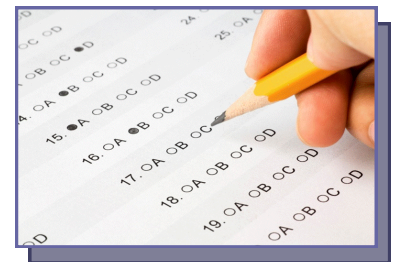


## Lost and Found

Next week are parent conferences at NES. Please make sure you check out the lost and found tables in the front lobby while you are here. There are many items that need to find their way home. Thank you!

## PARCC and MCAS Assessment Calendar

This year, NES students in grades three through six will be taking the PARCC assessment. In addition, the fifth graders will take the MCAS Science and Technology/Engineering assessment in May. It is important that all students arrive to school on testing day on time. Testing will begin at the beginning of the school day. Thank you for your assistance in making this process go smoothly.



Please note that gum will not be permitted during testing times.

### March/April 2015 – Performance-Based Component (PBC)

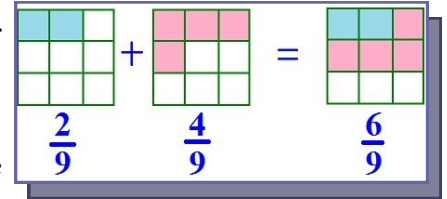
Monday	Tuesday	Wednesday	Thursday	Friday
23 PARCC ELA/ Literacy Literary Analysis Grades 3 and 5	24 PARCC ELA/ Literacy Literary Analysis Grades 4 and 6	25 PARCC ELA/ Literacy Research Grades 3 and 5	26 PARCC ELA/ Literacy Research Grades 4 and 6	27 PARCC ELA/ Literacy Narrative Grades 3 and 6
30 PARCC ELA/ Literacy Narrative Grades 4 and 5	31 PARCC Math Session 1 Grades 3, 4, and 5	April 1 PARCC Math Session 1, Grade 6 Session 2, Grade 3	April 2 PARCC Math Session 2 Grades 4, 5, and 6	April 3 Make up day



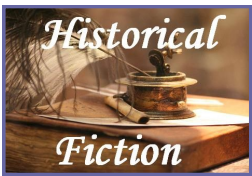
**Newbury Elementary School**  
 63 Hanover Street  
 Newbury, MA 01951  
 (978)465-5353  
 Fax: (978)463-3070  
 Website:  
<http://newbury.trsd.net>  
 Blog:  
<http://newburylementaryupdate.blogspot.com>

## Fourth Grade Update...

**Math:** Since our last NEWT news update, fourth grade students have tackled two major units: multiplying & dividing, and fractions! After a number of fraction-themed read aloud picture books and an inventive rap, fourth grade students came to understand that a fraction is a part of a whole. Soon, vocabulary was introduced and students were determining how to find fractional parts of visual models. The fourth grade students are currently working hard in order to use visual representations in order to determine equivalent fractions as well as identifying the same fractional part of different wholes, and different fractional parts of the same whole. They are also working on adding and subtracting mixed numbers, and making conversions between mixed numbers and improper fractions. Soon, fourth graders will be introduced to decimals.



The fourth grade team continues to use MobyMax in order to supplement the learning in the classroom as well as track student progress. Your child can get extra practice in by accessing this resource from home by entering their individualized username and password combination at [www.mobymax.com/ma1291](http://www.mobymax.com/ma1291).



**Reading:** Between novels on the Irish potato famine, the Boston Molasses Explosion, and the Great Depression, all fourth graders are learning important historical lessons while working on their reading skills in their reading groups. As with their realistic fiction unit during the first trimester, the fourth grade students have kept a weekly reading response journal for which they have responded to a variety of questions. The students recently completed a character traits poster project that combined an artistic vision of the main character of their novel with specific text evidence selected by the student to support claims made about the character's traits. To complement their historical-fiction pursuits, fourth grade students read paired informational texts about Ellis Island and answered a variety of leveled-reading questions based on the readings. Moreover, students have been working hard on a number of reading activities that bolster and support inference skills.

**Writing:** Lively leads, red flag words, the magic of three, oh my! The fourth grade has continued their study of narrative, expository, and persuasive writing by carefully dissecting the devices used in each genre of writing. The students have become highly familiar with the different types of graphic organizers used in order to frame pre-writing brainstorming. Since our last NEWT update, the students have worked hard to internalize the writing process by completing significant expository and narrative writing assignments. Whether it was writing a story of a magical sled or presenting a persuasive perspective on how to make up all the snow days we've experienced this year, the students let their creative minds shine while applying everything they have learned about narrative writing since September. The fourth grade students are currently hard at work writing a research paper based on a United States landmark of their choice. They have completed their research and their prewriting and are on to drafting their essays!



**Science:** Since our last NEWT update, our Science block rotations have continued and will be wrapping up in a few short weeks. All fourth grade classes have now rotated through each of the four classrooms, learning about space, electricity and magnetism, simple machines, and earth's history along the way. Through several enjoyable hands-on, interactive activities, the students have relished in the opportunity to spend time preparing for fifth

grade by switching classes. When the rotations are wrapped up, students will transition back to their homerooms for Science when we launch our animal habitat unit.

**Social Studies:** The students have continued their travel across the United States, covering the Southeast, Midwest and Southwest regions since our last NEWT update. The students' knowledge of the United States of America continues to bloom as we get closer to springtime. They now know the states and capitals of the Northeast, Southeast, Midwest and Southwest regions! Additionally, their passport projects continue to grow. The amount of information that they have amassed so far is impressive as they have identified the state, capital, location, bordering states, fun facts, and tourist attractions of each state studied thus far in the year. The students will continue to study the states, capitals, and regions of the United States with a specific focus on land, economy, and culture until they have covered the entire United States at which point, the end of the year project -- a map of the United States -- will be introduced.



## Kindergarten Registration

Dear Parents & Guardians,

**Registration for Kindergarten and Preschool 2015/2016 is underway for the upcoming year!** We have begun using a new online registration system. It is important that we get everyone in each school district registered as soon as possible so that we can create balanced classrooms which promote a great learning environment.

The district is committed to providing a child centered learning experience where the values of respect, integrity, and excellence for all are the cornerstones of our work. We look forward to welcoming you to the district. If you would like to learn more about Triton, please visit our website at:

[www.trsd.net](http://www.trsd.net)

To start the process of enrolling your child in Kindergarten or Preschool for the 2015/2016 school year, please visit:

<http://www.trsd.net/student-services-and-programs/early-childhood-services/>

Kindergarten registrations are due by Friday, March 13th.

Preschool registrations are due by Wednesday, April 1<sup>st</sup>.

Please note: **Children enrolling in Kindergarten must be 5 years of age on or before August 31st. Children enrolling in Preschool must be 3 years of age on or before August 31<sup>st</sup>.** In addition, the school requires a copy of a birth certificate, proof of residency, and record of current physical and immunizations. These will be collected at your child's screening. The school must receive these documents prior to your child starting school.

Thank you.

For questions or assistance with the registration process or the above details, please contact:

Melissa Roy

[mroy@trsd.net](mailto:mroy@trsd.net)

Phone: (978) 465-2397 X5330

Melissa Roy

Family Engagement Coordinator

Triton Regional School District

112 Elm Street

Byfield, MA 01922

978-518-4234

OFFICE HOURS

Monday, Wednesday & Friday



"I believe that every person is born  
with talent."

-Maya Angelou



## WORKSHOP ARTS INC.

For Immediate release 3/2/15

An Asian *fusion fairytale* filled with playful language, mesmerizing music, animated projections and uplifting dances are on stage at Theater Workshop. **Good Fortune**, is an original play written and directed by Stacey April Fix. The show runs from Thursday March 19th-Sunday March 22nd at Newbury Elementary School. **Good Fortune**, blends favorite Asian stories and mythology into a journey tale about a beautiful Asian Princess. Children dressed in Chinese pajamas narrate the tale of the mythical village of Good Fortune where Princess Lee Lee, a material girl, celebrates each birthday demanding great gifts. On her 16th birthday the Princess demands to receive the moon and instead she is sent on a journey by a spirit wizard. She travels the valley of lessons where she navigates her way through the fanciful story searching for answers to life's questions and learns meaningful lessons along the way. In the valley of lessons she encounters dazzling characters in brilliant costumes, dancing sisters, wise animals, kung fu fighters, a pond full of talking frogs and a giant dragon. The cast of 79 are from Newbury, Salisbury, Byfield, Newburyport and Rowley. **Good Fortune**, is a performance that is culturally enriching and entertaining for the whole family. A special **Benefit Performance in honor of Kevin Sicard is Saturday March 21st 3:00**. All proceeds from the special performance will benefit the Sicard Children's Education Fund.-Kendale (14) , Kamren (12), and Kalista (7) have been actively involved with Theater Workshop and the community for many years. All three children are in **Good Fortune**. To help the Sicard children, you can attend the performance and make your donation at the door, suggested minimum: \$20 per person. All seating is limited to first come first serve. Donations are accepted in cash, checks, or credit card. If you would like to help and can not attend the benefit performance you can still donate to the Sicard Children's education fund at the Workshop Arts website: [www.workshopartsinc.org](http://www.workshopartsinc.org) All donations are greatly appreciated and tax deductible.

### WHAT

Good Fortune....a fusion fairytale | A Theater Workshop Production presented by WORKSHOP ARTS INC. an original script directed by Stacey April Fix

*Also the Special Benefit performance for the Sicard Children's Education Fund*

### WHEN

Thursday March 19th 7:00pm

Friday March 20th 7:00pm

*Saturday March 21st 3:00pm Benefit Performance No ticket. Donations at the door.*

Saturday March 21st 7:00pm

Sunday March 22nd 1:00pm

### WHERE

Newbury Elementary School, 63 Hanover Street Newbury MA

### HOW

Tickets \$10, \$15 and \$25. Contact: TWSboxoffice@gmail.com Reservations Recommended.

The NES Newt -paper is published by Amy Pasquarello on a weekly basis. If you would like to submit something to be included in the NES Newt-paper, please email your information to [apasquarello@trsd.net](mailto:apasquarello@trsd.net) by the Wednesday before the newsletter is published.



THEATER WORKSHOP PRESENTS

# Good Fortune

an Asian Fusion Fairytale

Directed by  
Stacey April Fix

March Show Dates

Thurs 19<sup>th</sup> 7:00  
Fri 20<sup>th</sup> 7:00  
Sat 21<sup>st</sup> 7:00  
Sun 22<sup>nd</sup> 1:00

NEWBURY ELEMENTARY SCHOOL  
63 Hanover Street, Newbury, MA

WWW.WORKSHOPARTSINC.ORG  
TICKET INFORMATION: [twsoffice@gmail.com](mailto:twsoffice@gmail.com)  
Theater Workshop is a Workshop Arts Inc. Program

This program is supported in part by grants from the Newbury, Hanover and Salisbury School Committees, local agencies supported by the Massachusetts Cultural Council, a state agency.

THE TRITON REGIONAL SCHOOL COMMITTEE NEITHER SPONSORS NOR ENDORSES THE INFORMATION IN THIS NOTICE OR THE PUBLISHER

THEATER WORKSHOP PRESENTS

# Good Fortune

Directed by Stacey April Fix

A Special Performance

to Benefit the Sicard Children's Education Fund

Saturday, March 21<sup>st</sup> 3:00PM  
NEWBURY ELEMENTARY SCHOOL

- Seats available on a first-come first serve basis
- Each seat a suggested \$20 minimum donation
- Cash, checks or credit cards accepted
- All Donations Are Tax Deductible
- Donations Accepted At The Door Or Online

WWW.WORKSHOPARTSINC.ORG

Theater Workshop is a Workshop Arts Inc. Program  
The Triton Regional School Committee neither sponsors nor endorses the information in this notice or the publisher

## ENRICHMENT CHAIRPERSON OPENING

Newbury Elementary is currently seeking a parent volunteer to serve as **Enrichment Chairperson** (or team up with a friend and become co-Enrichment Chairs!). This is a fun and rewarding job and almost all the work can be done from home. No experience is necessary - just be organized and have a desire to support the C.A.R.E.S. culture at NES! In this role, you will partner with the PTA and Principal to plan and execute school-wide enrichment programs. Past programs have included character building programs like World of Jump Roping and Molly Sliney Olympic Fencer, cultural and musical programs such as Russian Ensemble Barynya and Tony Vacca African Percussion as well as storytelling programs like Odds Bodkin and Len Cabral (ask your kids about them)! You will also oversee a team of parent Enrichment Coordinators who help individual grades with their enrichment programs. Zoe Fogarty, the current incumbent, is stepping down at the end of this school year, but will provide full training and guidance. All interested parents are encouraged to contact us to learn more. If you are interested, please email Zoe Fogarty at [zoe-andmike@comcast.net](mailto:zoe-andmike@comcast.net) or Principal Beth Yando at [byando@trsd.net](mailto:byando@trsd.net).

Newbury Elementary School Presents

## All School Art Exhibit

March 16-20

2015

See work by all the students at NES!

And

Compliments of the PTA

Enjoy a special display of work by

Dutch Artist

Vincent Van Gogh

## PTA Update...

Our PTA Spring Luau Party and Silent Auction is looking to be a great evening for the whole family!

Friday, March 27th, 5-8 pm

Newbury Elementary School

\$5/person, \$20 max per family, no charge for children under age 4.

**CHECK OUT THE DID YOU KNOW SECTION OF THIS NEWT-paper for more details...**

### Announcing the Golden Ticket Raffle!

For the first time, you can win your favorite auction item before the actual auction! Your \$100 donation to NES PTA enters you in a raffle to win THE GOLDEN TICKET. The winner can redeem their GOLDEN TICKET for **any** NES Spring Fling Luau Auction item **before** the event! Only 25 Golden Tickets will be sold; a minimum of ten Golden Tickets must be sold or money will be refunded and there will be no Golden Ticket Raffle.

**If you win:** Your favorite auction item will be yours for a bargain and without the bidding war! If you don't win: your \$100 will bring exciting educational opportunities to the deserving children of NES! Now that's a win-win!

The deadline for entering the Golden Ticket Raffle is Thursday, March 26th at 8:45 am. All entrants must be age 18 or older. **See the attached flyer for all the details and an entry form.**

### Calling all NES Families! We need your help!

Put your creative caps on and donate to the NES Auction. In addition to local businesses, we are receiving donations of all shapes and sizes from many NES families. We would love it if you and yours would participate as well. Consider the following types of fun items you could create with your family:

- Summer time fun bag: Fill a big beach bag it with fun beach items for adults and kids. Great beach towels, Sunscreen, pails, etc.
- Ice Cream Lovers Smorgasbord: Ask a few local ice cream parlors to donate a few free cones or put together a collection of ice cream toppings
- Picnic Basket with everything you'd need for a fun family outing
- Library collection of your family's favorite books
- Arts and Crafts: Gather a selection of supplies to make fun projects for young or old artists
- Trying to declutter? Donate new, unused items that might be of interest to others

Think of something fun and donate! The more items we have, the more fun for all and the more money we raise for NES. Many local businesses that you use all the time are eager to get the word out to other families so don't be shy about asking for a donation from a business that likes our demographics. Its a win/win! If you can help, email [newburyptainfo@gmail.com](mailto:newburyptainfo@gmail.com) for guidance.

### Luau and Auction Volunteers Needed

We need lots of help with the Spring Fling Luau. Sign up at [Volunteer Signup](#) or email [newburyptainfo@gmail.com](mailto:newburyptainfo@gmail.com).

If we want to continue the events and supports that the PTA traditionally offers, we need to raise \$15-20,000. We need help to pull it off!

**The 2015-16 PTA needs YOU**

## PTA Update Continued...

Short term, we need volunteers to staff our events. We need Spring Luau Party and Silent Auction committee workers. But longer term, **we need volunteers to lead the PTA next year.** Several of the current board members will be leaving their positions after years of service. Have an interest in being a school community leader? Have a nomination for a PTA officer? Email [newburyptainfo@gmail.com](mailto:newburyptainfo@gmail.com). We can provide information on the benefits and responsibilities of being involved.

### NES GROWS

#### *Creating a dynamic playground for our students and the community*

Would you or your child like to help design parts of the new schoolyard? We are currently looking for someone to lead the *Children's Representative Group*. Fully supported by NES GROWS and Play By Design, the focus of this group will be guided by the interests of the student members. Activities range from designing whimsical features, to designing play features, or learning more about the materials used to build the play structures and investigate where we can get the materials.

Would you like to **take a tour of the new playground design?** Visit <http://nesgrows.com/playground-design/>

Support the playground rebuild by attending the **Fairy and Gnome Discovery Walk at Petengill Farm** on Saturday, May 16th. We invite you to submit your own Fairy and Gnome house for the event. All houses welcome, and there is no submission fee. All proceeds we receive from the event will go directly to the playground rebuild. This inaugural event is a first-time collaboration between the Salisbury and Newbury Elementary School PTAs to foster community between our two towns. For more information, please visit <http://fairygnomewalk.weebly.com/>

### How to stay in touch:

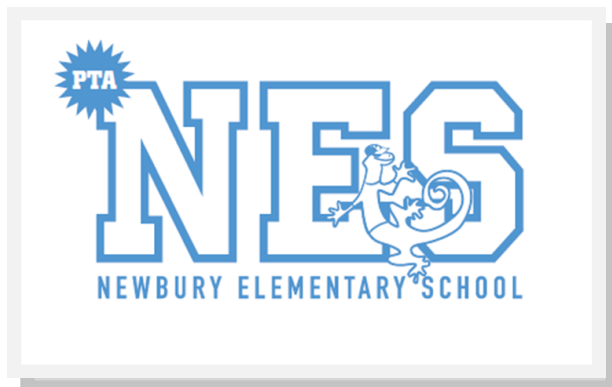
**Email:** [newburyptainfo@gmail.com](mailto:newburyptainfo@gmail.com)

**Web:** [www.newburypta.com](http://www.newburypta.com)

**Facebook:** [www.facebook.com/nespta](http://www.facebook.com/nespta)

**Donations:** [www.newburypta.com/donate](http://www.newburypta.com/donate)

**Playground Information:** [www.nesgrows.com](http://www.nesgrows.com)



### ANNOUNCING THE NES AUCTION GOLDEN TICKET RAFFLE!

*You could win  
your favorite  
auction item!*



**Help your school! Help yourself win  
an auction item of your choice!**

#### Here's how it works:

Your \$100 donation to NES PTA enters you in a raffle to win THE GOLDEN TICKET. The winner can redeem their GOLDEN TICKET for any NES Spring Fling Luau Auction item **before the event!** Only 25 Golden Tickets will be sold! (A minimum of ten Golden Tickets must be sold or money will be refunded.)

**If you win:** Your favorite auction item will be yours for a bargain and without the bidding war! If you don't win, your \$100 will bring exciting educational opportunities to the deserving children of NES! Now that's a win-win!

#### Priceless and high-valued items could be yours to win. Items include:

- Fun Experiences with Teachers and Staff
- Principal for the Day
- Ride to School on a Newbury Fire Truck
- Photo Shoot with Professional Photographer
- Popular Summer Camp Sessions
- A Long Weekend Away at A Lakeside Cottage in Maine

Check out these and many more items and buy advance admission tickets at [www.newburyptainfo.com](http://www.newburyptainfo.com). The list of auction items and advanced online bidding will be available on March 21. The Spring Fling Luau and Auction is March 27.

Ticket and payment must be turned into NES Office by **Thursday, March 26 at 8:45 am**. A random drawing will be held at 9 am and the winner will be notified. Email [newburyptainfo@gmail.com](mailto:newburyptainfo@gmail.com) with questions.

To enter THE GOLDEN TICKET raffle, you must be 18 years old and return this form **along with a \$100 check made out to NES PTA** to the NES School Office.

Name: \_\_\_\_\_ Email: \_\_\_\_\_ Phone: \_\_\_\_\_

## SEPAC News and Events

The Triton Special Education Parent Advisory Council (SEPAC) is a group of community members whose mission is to work for understanding of, respect for, and support of all children with special needs in the community. Contact us at [sepactriton@gmail.com](mailto:sepactriton@gmail.com)

### Sign up for the SEPAC emails!

Learn about upcoming events and resources in our town and in the area by being on our email list. To sign up, send your name and email address to: [SEPACtriton@gmail.com](mailto:SEPACtriton@gmail.com).

### Upcoming SEPAC events:

#### SEPAC MEET-UP

Friday, March 20th, 9-10 am

Tannery Lobby, Newburyport (chairs by the Jabberwocky entrance)

Meet other parents and guardians in a casual atmosphere to share experiences and resources. Younger children are welcome to accompany you; snacks and coffee are available for purchase nearby.

#### IEP WORKSHOP

Monday, March 30th, 7 pm  
Rowley Public Library, 141 Main St., Rowley

Attorney Michelle Moor will present an IEP Workshop designed to help parents and guardians understand the "basics" of an IEP (i.e., what goes where and why), advocate effectively within the school team process to develop a meaningful IEP for a child; and avoid some common mistakes.

Michelle Moor is a graduate of Vassar College and Northeastern University School of Law. Attorney Moor's practice is devoted entirely to working with families to ensure that students in Massachusetts receive the educational services to which they are entitled. She routinely consults with families about educational and civil rights matters, represents families during negotiations with school districts, as well as at disciplinary and manifestation hearings, hearings before the Bureau of Special Education Appeals, and in state and federal court. Attorney Moor has been named as a Rising Star among attorneys in New England by *Super Lawyers* in 2010, 2011, 2012 and 2014. She is a member of the Council of Parent Attorneys and Advocates (COPAA), the Special Needs Advocacy Network (SPAN), and the Massachusetts Bar Association.

#### SEPAC BUSINESS MEETING

Monday, April 13th, 6 pm

Location TBA

Join in the discussion about events and activities for the remainder of the school year, the summer and the new school year.

#### Learning Opportunities for Students with Intellectual Disabilities in Massachusetts Public Colleges and Universities

Monday, April 13th, 6:30pm

Location TBA

Glenn Gabbard, PhD, is the coordinator of Inclusive Concurrent Education Enrollment for the state Executive Office of Education. He will present information on state funded program opportunities available to public high school students with severe disabilities, ages 18-22, who have not passed MCAS. This presentation will be helpful for any parent with a child of transition age.





## March 2015

Sun	Mon	Tue	Wed	Thu	Fri	Sat
1 1:00-3:00 Girls Field Hockey	2 8:45-9:15 Read Across America 6-8pm SEPAC	3	4 4:15 School Council	5	6 <b>Half Day: Professional Development</b> Marks Close	7
8 1:00-3:00 Girls Field Hockey	9	10 7:30 am Student Council	11 7 pm School Committee	12 Grades 5 and 6 District Arts Festival (All Day)  7pm District Arts Festival	13 8:30-10:00 PTA Coffee House	14 TWS Dress Rehearsal
15	16	17 Grades 5 and 6 Math Meet	18 Report Cards go home  TWS School Performance	19 <b>Half Day: Parent Conferences</b>  7 pm TWS Performance	20 <b>Half Day: Parent Conferences</b>  7 pm TWS Performance	21 7 pm TWS Performance
22 7 TWS Matinee Performance	23 PARCC/ELA Grades 3 and 5	24 PARCC/ELA Grades 4 and 6	25 PARCC/ELA Grades 3 and 5  7 pm School Committee (Tentative)	26 PARCC/ELA Grades 4 and 6  3:15 Technology Committee	27 PARCC/ELA Grades 3 and 6 5:00-8:00 PM PTA Spring Luau Party/Auction	28
29	30 PARCC/ELA Grades 4 and 5	31 PARCC/Math Grades 3, 4, and 5				

### Don't miss it! There will be fun for all ages, including:

Photo Booth    Limbo Contest    Indoor Miniature Golf    New Games of Skill

Arts and Crafts    Pizza, Hot Dogs, Drinks & Baked Goods for sale

**Bid on great auction items online ahead of time and at the party!**

Some auction highlights are:

Kayaks for a day for eight from Newbury Kayak and Canoe

Ride to School in a Newbury Fire Truck

Principal for the Day

Whoopie Pie Baking Party at Chococoa

Play with Clay and Mrs. Merluzzi

Weekend Stay in Maine

Camp Session at Workshop in the Woods

**Buy tickets and register for bidding ahead:**

<http://tinyurl.com/NES-Spring-Fling>

**We are still accepting auction donations!** Email [newburyptainfo@gmail.com](mailto:newburyptainfo@gmail.com) for information.

### Did you know?

## Newbury PTA SPRING FLING LUAU AND SILENT AUCTION

All proceeds benefit the Newbury PTA to support the school's programs and activities!

**Friday, March 27**  
5-8 pm

NEWBURY ELEMENTARY SCHOOL

**ACTIVITIES:** Miniature golf, spin art, photo booth, games, and food!

**SILENT AUCTION:** Featuring gift certificates, travel, sports outings, fun experiences with school staff, and more!

**ADMISSION:** \$5/person, under 4 free, \$20 max for family

Email [newburyPTAinfo@gmail.com](mailto:newburyPTAinfo@gmail.com) for more information.