



The Newbury Elementary School

Newspaper

March 27, 2015

Volume 2, Issue 26

Inside this issue:

Newbury PTA Spring Fling Luau and Silent Auction	1
Triton's Science and Engineering Fair	1
PARCC/MCAS Calendar	1
Second Grade Update	2
PTA Update	2
SEPAC Update	3
Calendar	4
Did You Know?	4

Newbury PTA Spring Fling Luau and Silent Auction

TONIGHT!

The Spring Fling Luau and Auction is TONIGHT, 5-8 pm at Newbury Elementary School. Bring the family and have some fun while you support our school!

Thank you to all who made donations and who will come out to bid on the wonderful auction items!

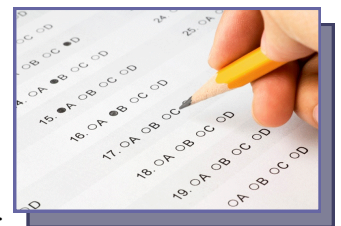
Mahalo!

Triton's Science and Engineering Fair

Triton's Science and Engineering Fair will be held at the High School Library on Thursday, April 2nd at 6 pm. Some of our NES students are showcasing their experiments and/or designs. We wish them the best of luck sharing their hard work!

PARCC and MCAS Assessment Calendar

This year, NES students in grades three through six will be taking the PARCC assessment. In addition, the fifth graders will take the MCAS Science and Technology/Engineering assessment in May. It is important that all students arrive to school on testing day on time. Testing will begin at the beginning of the school day. Thank you for your assistance in making this process go smoothly.



Please note that gum will not be permitted during testing times.

March/April 2015 – Performance-Based Component (PBC)

Monday	Tuesday	Wednesday	Thursday	Friday
23 PARCC ELA/Literacy Literary Analysis Grades 3 and 5	24 PARCC ELA/Literacy Literary Analysis Grades 4 and 6	25 PARCC ELA/Literacy Research Grades 3 and 5	26 PARCC ELA/Literacy Research Grades 4 and 6	27 PARCC ELA/Literacy Narrative Grades 3 and 6
30 PARCC ELA/Literacy Narrative Grades 4 and 5	31 PARCC Math Session 1 Grades 3, 4, and 5	April 1 PARCC Math Session 1, Grade 6 Session 2, Grade 3	April 2 PARCC Math Session 2 Grades 4, 5, and 6	April 3 Make up day



Newbury Elementary School
63 Hanover Street
Newbury, MA 01951
(978)465-5353
Fax: (978)463-3070
Website:
<http://newbury.trsd.net>
Blog:
<http://newburylementaryupdate.blogspot.com>

Second Grade Update...

Second graders have set sail around the world with the beginning of our ancestry unit. Students have begun to learn more about the people in their family trees, and what countries their relatives lived in before immigrating to the United States. We're discovering that everyone's ancestors came from some other nation, no matter how many years ago! This home-school collaboration will feature research on the flags, land-marks, customs, history, foods, dance, music, sports, and games of countries around the world. We will be addressing many standards in History/Social Science, as well as English/Language Arts; for example, second graders are learning to use the features of nonfiction text to easily locate key facts and information about the countries of their ancestors. Our young researchers' hard work will be on display at Ancestry Sharing Day on April 16th.



PTA Update...

Fairy and Gnome Discovery Walk

Support the playground rebuild by attending the Fairy and Gnome Discovery Walk at Pettengill Farm on Saturday, May 16th. We invite you to submit your own Fairy and Gnome house for the event. All houses welcome, and there is no submission fee. All proceeds we receive from the event will go directly to the playground rebuild. This inaugural event is a first-time collaboration between the Salisbury and Newbury Elementary School PTAs to foster community between our two towns. For more information, please visit <http://fairygnomewalk.weebly.com/>

Spring Fling Luau and Auction is TONIGHT, 5-8 pm at NES. Lots of fun is available for all ages!

Important information:

All students must be accompanied by an adult.

There will be activities in the gym and cafeteria, plus the Kids Club Room will be used as the Chill Room for those who benefit from a quiet, calm refuge.

Register to Bid Ahead

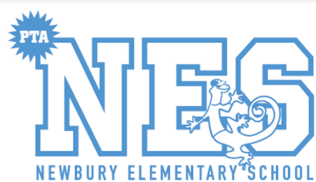
This year's auction has a streamlined checkout system which works best if bidders register online ahead of time or when they arrive at the auction. You will be assigned a bidder ID number. You will be able to pay with credit card, check or cash at check-out. To register as a bidder, visit: <http://tinyurl.com/NESBidders>.

If you do not register ahead, you can register at the event.

Buy Tickets Online or At the Door

Spring Fling Luau Admission Tickets are available online ahead or at the door. Online tickets may be purchased at: <http://tinyurl.com/NES-Spring-Fling>

Tickets are \$5/person, \$20 max/family. Children under 4 are free.



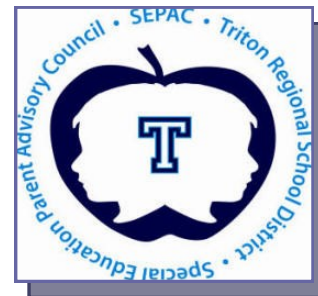
The NES Newt -paper is published by Amy Pasquarello on a weekly basis. If you would like to submit something to be included in the NES Newt-paper, please email your information to apasquarello@trsd.net by the Wednesday before the newsletter is published.

“Setting goals is the first step in turning the invisible into the visible.”

-Tony Robbins

SEPAC News and Events

The Triton Special Education Parent Advisory Council (SEPAC) is a group of community members whose mission is to work for understanding of, respect for, and support of all children with special needs in the community. Contact us at sepactriton@gmail.com



IEP WORKSHOP

Monday, March 30th, 7 pm Rowley Public Library, 141 Main St., Rowley

Attorney Michelle Moor will present an IEP Workshop designed to help parents and guardians understand the "basics" of an IEP (i.e., what goes where and why), advocate effectively within the school team process to develop a meaningful IEP for a child, and avoid some common mistakes.

Michelle Moor is a graduate of Vassar College and Northeastern University School of Law. Attorney Moor's practice is devoted entirely to working with families to ensure that students in Massachusetts receive the educational services to which they are entitled. She routinely consults with families about educational and civil rights matters, represents families during negotiations with school districts, as well as at disciplinary and manifestation hearings, hearings before the Bureau of Special Education Appeals, and in state and federal court. Attorney Moor has been named as a Rising Star among attorneys in New England by *Super Lawyers* in 2010, 2011, 2012 and 2014. She is a member of the Council of Parent Attorneys and Advocates (COPAA), the Special Needs Advocacy Network (SPAN), and the Massachusetts Bar Association.

SEPAC BUSINESS MEETING

Monday, April 13th, 6 pm Location TBA

Join in the discussion about events and activities for the remainder of the school year, the summer and the new school year.

WORKSHOP:

Learning Opportunities for Students with Intellectual Disabilities in Massachusetts Public Colleges and Universities

Monday, April 13th, 6:30pm Location TBA

Glenn Gabbard, PhD, is the coordinator of Inclusive Concurrent Education Enrollment for the state Executive Office of Education. He will present information on state funded program opportunities available to public high school students with severe disabilities, ages 18-22, who have not passed MCAS. This presentation will be helpful for any parent with a child of transition age.

PRESENTATION:

Shut Up About Your Perfect Kid! The Movement of Imperfection.

Thursday, May 7th, 7 pm Triton High School Auditorium

Designed for caregivers of special children, this humorous, heartwarming 90-minute workshop is based on the best-selling book, *Shut Up About Your Perfect Kid! A Survival Guide for Ordinary Parents of Special Children*. Using hilarious anecdotes and fun exercises (no Spandex required), Gina and Patty Gallagher will show attendees how to let go of the expectations they have for their children and embrace the reality. Join their 800,000 followers on Facebook or read about their movement of imperfection at www.shutupabout.com.



April 2015

Sun	Mon	Tue	Wed	Thu	Fri	Sat
29	30 PARCC/ELA Grades 4 and 5	31 PARCC/Math Grades 3, 4, and 5	1 PARCC/Math Grades 3 and 6 4:15 School Council 6-8 SEPAC Meeting	2 PARCC/Math Grades 4, 5, and 6	3 Half Day – Good Friday PARCC Make Up Day	4
5	6	7 7:30 am Student Council	8 7:00 pm School Com- mittee Meeting	9	10 Half Day – Professional Develop- ment	11
12	13 Book Fair	14 Book Fair Math Meet – Gr. 5 & 6	15 Book Fair 6:00 pm Storm Surge Meeting	16 Book Fair Second Grade Ancestry Day	17 Book Fair Progress Reports Go Home	18
19	20 Spring Vacation	21 Spring Vacation	22 Spring Vacation	23 Spring Vacation	24 Spring Vacation	25
26	27	28 7:30 am Student Council	29	30 3:15 Technology Committee Meeting		

Did you know?

Intra-District Math Meet

Last week students from Newbury, Pine Grove, and Salisbury Elementary Schools faced-off in the first math meet of the year. Students' math skills were put to the test by eight individual questions, followed by a multipart team question.

High scores for NES were earned by the following: Alivia B., Justin F., Charlie G., and Ross L. Teams from the three schools will face-off again at Salisbury Elementary School on April 14th.

Teams prepare for these math meets by practicing once a week with their school's coach. This enrichment activity is made possible thanks to the dedication of Mrs. Chiasson, NES 6th grade math teacher. The overall program is coordinated by Mrs. Paige, the Math Specialist at Newbury Elementary School.



Above: Newbury Elementary School Students