

# A.W. James Elementary School

Continued  
...learning  
CAUSE LEARNING NEVER STOPS!

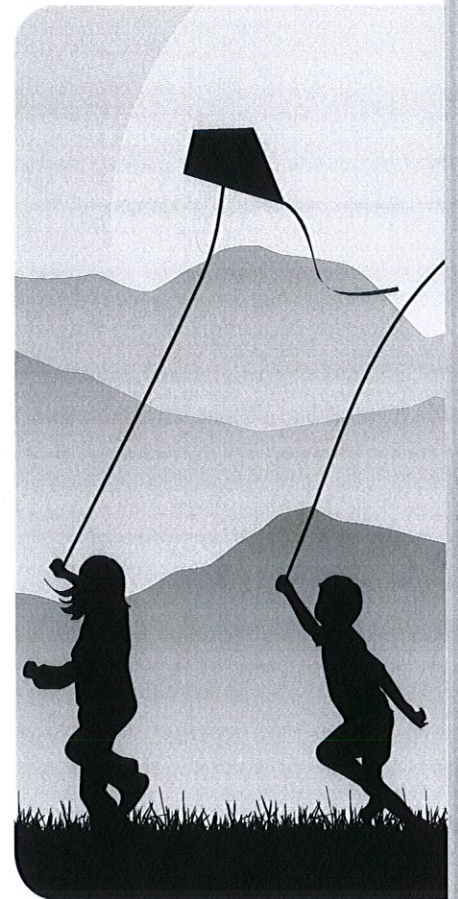
5<sup>th</sup> Grade  
ELA, Math, & Science  
Week 2

Student Name \_\_\_\_\_

# FIRSTS *in* FLIGHT

by Edward Castillo

- 1 People have dreamed of flying since the beginning of time. An ancient Greek myth tells of a boy and his father who flew with wings made of wax and feathers. But the invention of the kite marks the true beginning of flight history. Kites were first flown in China around 400 B.C.E. Around that time, people began to study the science of flight.
- 2 For centuries, inventors built mechanical wings, attaching them to their arms. These efforts failed, but people still searched for ways to fly. During the 1480s, Leonardo da Vinci made more than 100 sketches of flying machines, which would later influence other inventors.
- 3 In 1783, the Montgolfier brothers built the first hot-air balloon. The balloon's passengers were a sheep, a rooster, and a duck. The brothers solved the problem of lift, but the balloon did not allow riders to move forward or steer.
- 4 In the 1850s, George Cayley hoped to achieve controlled flight. His glider designs shaped the work of Otto Lilienthal. In 1891, Lilienthal became the first person to launch a manned glider. He wrote a book about his experiments, which inspired two brothers from Ohio, Orville and Wilbur Wright.
- 5 The Wright brothers tested many flight theories with balloons and kites. Their 1902 *Wright Glider* could be controlled with a movable tail. But their greatest accomplishment was adding an engine to lift their glider into the air.
- 6 On December 17, 1903, at Kill Devil Hills in North Carolina, the *Wright Flyer* first flew. Orville Wright was the first to successfully pilot a motorized flight.



## Close Reader Habits

Do the ideas and actions of inventors influence other, later inventors?  
Reread the article.

**Underline** details that tell how some inventors influence other inventors.



Use quotes to support your inferences. Otherwise, your inferences will seem like guesses.

**Think** Use what you learned from reading the history article to respond to the following questions.

- 1 This question has two parts. Answer Part A. Then answer Part B.

**Part A**

Which inference is **best** supported by the passage?

- A Inventors learn from the work of others.
- B Inventing is much easier than it used to be.
- C Most inventors try to keep their ideas from being stolen.
- D Some inventors are geniuses who don't need help from others.

**Part B**

Which **two** sentences from the text **best** illustrate the inference in Part A?

- A "People have dreamed of flying since the beginning of time."
- B "In 1783, the Montgolfier brothers built the first hot-air balloon."
- C "His glider designs shaped the work of Otto Lilienthal."
- D "In 1891, Lilienthal became the first person to launch a manned glider."
- E "He wrote a book about his experiments, which inspired two brothers from Ohio, Orville and Wilbur Wright."
- F "Orville Wright was the first to successfully pilot a motorized flight."

**Talk**

- 2 The technology of flight improved greatly in less than 150 years. What evidence from the passage supports this idea? Use the chart on page 45 to collect quotes from the passage and organize your thinking.

**Write**

- 3 **Short Response** What evidence from the passage supports the idea that the technology of flight improved greatly in less than 150 years? Use quotes from the passage in your response. Use the space provided on page 45 to write your answer.

**HINT** First, restate the idea from the question. Then provide the evidence supporting that idea.

## WORDS TO KNOW

As you read, look inside, around, and beyond these words to figure out what they mean.

- **annex**
- **disorder**
- **feeble**

# from TREASURES of the TOMB

by Sean Price, *National Geographic Kids*

## DISCOVERING KING TUT'S INCREDIBLE RICHES

- 1 It's pitch black. His hands trembling, British archaeologist Howard Carter makes a small hole in the tomb's second door. He inserts a candle. Next to him, Lord Carnarvon blurts out, "Can you see anything?" After a moment of stunned silence, Carter replies, "Yes, wonderful things."
- 2 What Carter sees looks like the inside of a giant treasure chest. Gold gleams everywhere! There are glittering statues, a throne, and fabulous golden beds with posts shaped like the heads of wild animals. Precious items are heaped all over the room. A mound of chariot parts fills one corner.
- 3 It has taken five years of digging in Egypt's Valley of the Kings—a graveyard for ancient Egypt's richest kings—and \$500,000 (in today's money) of British millionaire Lord Carnarvon's cash, but Carter has hit the jackpot. He has discovered the tomb of Tutankhamun (often called Tut for short). Tut had become pharaoh at age nine and died just ten years later around 1323 B.C.

This photograph shows Lord Carnarvon (left) and Howard Carter (right). Lord Carnarvon provided much of the money that supported Carter's searches, one of which led to the discovery of Tutankhamun's tomb.



4 Carter, Lord Carnarvon, and two others enter the cluttered first room, which they call the antechamber. Under a bed with posts in the shape of hippopotamus heads, Lord Carnarvon finds the entrance to another room. Soon known as the annex, this tiny chamber holds more than 2,000 everyday objects. They include boomerangs, shields, a box containing eye makeup, and 116 baskets of food. Some of the piles reach nearly six feet high! When Carter clears the annex out later, his workers are suspended by ropes at first to keep from stepping on things.

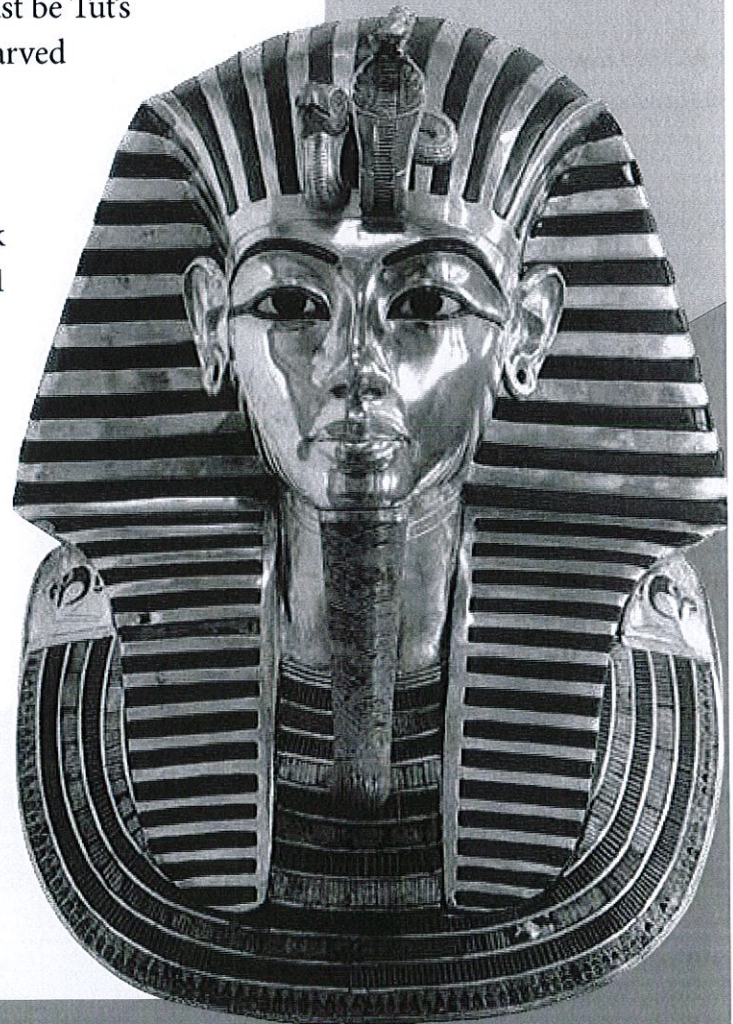
5 The disorder in the annex indicates ancient grave robbers had looted the tomb. They left behind footprints and a bundle of Tut's gold finger-rings hurriedly wrapped in cloth. Luckily, they'd been caught and the tomb resealed. That was more than 3,000 years ago.

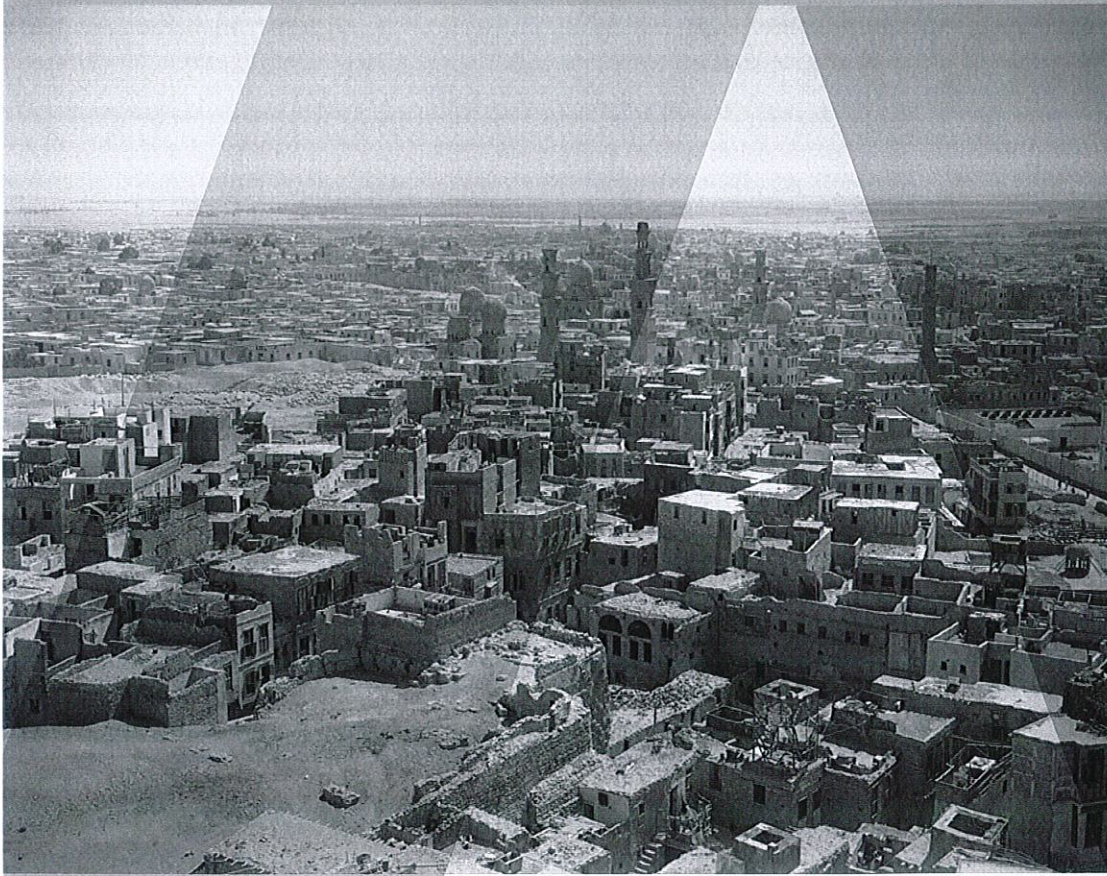
6 The explorers are fascinated by two tall statues in the antechamber showing Tut dressed in gold. The figures seem to be guarding yet another room. Sweltering in the heat, the group crawls through a hole created by the ancient robbers. Before them stands a huge wooden box, or shrine, that glitters with a layer of gold. This room must be Tut's burial chamber! At the very center of the shrine is a carved sarcophagus, or stone coffin. Inside it are three nested coffins, each one more richly decorated than the one before. Inside the last coffin, made of solid gold, lies the mummy of Tutankhamun. A 22-pound gold mask covers its head and shoulders. A collar made from 171 separate gold pieces rests on the mummy's chest. It wears gold sandals on its feet.

7 On one side of the burial chamber is an open doorway. It reveals the fourth room of the tomb, this one so full of riches that Carter dubs it the treasury. Towering over the other objects is a gold-covered shrine protected by statues of goddesses. The shrine holds Tut's liver, lungs, stomach, and intestines. Each vital organ is preserved, wrapped in linen, and placed in its very own small coffin.

8 Today about 2.5 million people visit Egypt's Cairo Museum each year to see Tut's treasures on display. The ancient Egyptians believed that "to speak the name of the dead is to make them live again." If that is true, Tutankhamun certainly lives on.

This mask made of gold and gems covered the head and shoulders of the mummy of Tutankhamun.





This photo shows the city of Cairo as it appeared around the time of Lord Carnarvon's unexpected death. Because he died shortly after the opening of Tutankhamun's tomb, some newspapers claimed that a curse caused Carnarvon's death.

### CURSE OF THE MUMMY

- 9 On April 5, 1923, Lord Carnarvon died suddenly in Egypt. At that same moment, lights went out all over Cairo. In England, Lord Carnarvon's dog, Susie, howled and died.
- 10 Newspapers claimed that these events were caused by King Tut's "curse." According to the newspapers, Tut's burial chamber contained a warning: "Death shall come on swift wings to him that toucheth the tomb of the Pharaoh."
- 11 It was a chilling story. But was it true? Actually, there was no warning in Tut's tomb. The papers made up that part. Skeptics<sup>1</sup> say the events have other explanations. Lord Carnarvon had been in poor health for years. Cairo's feeble electric system caused lights to wink out all the time. And dogs sometimes do die unexpectedly.
- 12 Only 6 of the 26 people who saw the opening of Tut's burial chamber died within the next ten years. Howard Carter, who should have been the most cursed of all, lived until 1939—17 years after coming face-to-face with Tutankhamun's mummy.

<sup>1</sup> **Skeptics:** people who doubt and have disbelief

► **Think** Use what you learned from reading the history article to respond to the following questions.

- 1 Which sentence from the article **best** supports the inference that one custom of the ancient Egyptians was to preserve bodies after death?
- A "A mound of chariot parts fills one corner."
  - B "Soon known as the annex, this tiny chamber holds more than 2,000 everyday objects."
  - C "A collar made from 171 separate gold pieces rests on the mummy's chest."
  - D "The shrine holds Tut's liver, lungs, stomach, and intestines."

- 2 This question has two parts. First, answer Part A. Then answer Part B.

**Part A**

What is the meaning of suspended as it is used in paragraph 4 of the article?

- A floated
- B swung
- C carried
- D waited

**Part B**

Which phrase from paragraph 4 helps the reader understand the meaning of suspended?

- A "... Carter clears the annex out later, ..."
- B "... by ropes..."
- C "... which they call the antechamber."
- D "... a box containing eye makeup, and 116 baskets of food."

- 3 Which paragraph **best** supports the idea that finding King Tutankhamun's tomb required a lot of time and money?
- A paragraph 3
  - B paragraph 5
  - C paragraph 9
  - D paragraph 12

- 4 This question has two parts. First, answer Part A. Then answer Part B.

**Part A**

What can you infer about the author's point of view regarding the events of April 5, 1923, described in paragraph 9?

- A The events prove that King Tut's "curse" was real.
- B The events probably were a coincidence.
- C The events served as a warning about entering the tomb.
- D The events should have been investigated as crimes.

**Part B**

Which **two** sentences from the article **best** illustrate the inference you made in Part A?

- A "On April 5, 1923, Lord Carnarvon died suddenly in Egypt."
- B "Lord Carnarvon had been in poor health for years."
- C "Newspapers claimed that these events were caused by King Tut's 'curse.'"
- D "It was a chilling story."
- E "In England, Lord Carnarvon's dog, Susie, howled and died."
- F "Actually, there was no warning in Tut's tomb."

- 5 Read the sentence and the directions that follow.

The ancient Egyptians believed they could take the things they used in their daily lives with them to the grave.

Underline the sentence from the paragraph below that **best** shows this idea.

Carter, Lord Carnarvon, and two others enter the cluttered first room, which they call the antechamber. Under a bed with posts in the shape of hippopotamus heads, Lord Carnarvon finds the entrance to another room. Soon known as the annex, this tiny chamber holds more than 2,000 everyday objects. They include boomerangs, shields, a box containing eye makeup, and 116 baskets of food. Some of the piles reach nearly six feet high! When Carter clears the annex out later, his workers are suspended by ropes at first to keep from stepping on things.



## Adding Decimals

Name: \_\_\_\_\_

Circle all the problems with sums less than 5.  
Then find the exact sums of only the problems you circled.

**1**  $0.24 + 4.25$

\_\_\_\_\_

**2**  $4.8 + 0.16$

\_\_\_\_\_

**3**  $2.31 + 2.075$

\_\_\_\_\_

**4**  $2.31 + 2.7$

\_\_\_\_\_

**5**  $0.909 + 4.09$

\_\_\_\_\_

**6**  $3.99 + 1.109$

\_\_\_\_\_

**7**  $2.675 + 2.325$

\_\_\_\_\_

**8**  $3.775 + 0.225$

\_\_\_\_\_

**9**  $2.06 + 2.933$

\_\_\_\_\_

**10**  $2.6 + 2.933$

\_\_\_\_\_

**11**  $1.809 + 3.091$

\_\_\_\_\_

**12**  $3.01 + 1.991$

\_\_\_\_\_

**13**  $1.83 + 3.1 + 0.1$

\_\_\_\_\_

**14**  $0.012 + 3.79 + 1.101$

\_\_\_\_\_

**15**  $2.6 + 2.04 + 0.099$

\_\_\_\_\_

**16** What strategies did you use to solve the problems?

## Dividing by Hundredths

Name: \_\_\_\_\_

**Divide.**

**1**  $1 \div 0.25$

\_\_\_\_\_

**2**  $4 \div 0.25$

\_\_\_\_\_

**3**  $3.75 \div 0.25$

\_\_\_\_\_

**4**  $6.5 \div 0.25$

\_\_\_\_\_

**5**  $1.8 \div 9$

\_\_\_\_\_

**6**  $1.8 \div 0.9$

\_\_\_\_\_

**7**  $1.8 \div 0.09$

\_\_\_\_\_

**8**  $225 \div 75$

\_\_\_\_\_

**9**  $22.5 \div 7.5$

\_\_\_\_\_

**10**  $2.25 \div 0.75$

\_\_\_\_\_

**11**  $0.36 \div 0.06$

\_\_\_\_\_

**12**  $6.36 \div 0.06$

\_\_\_\_\_

**13**  $36.36 \div 0.06$

\_\_\_\_\_

**14**  $9 \div 2.25$

\_\_\_\_\_

**15**  $13.5 \div 2.25$

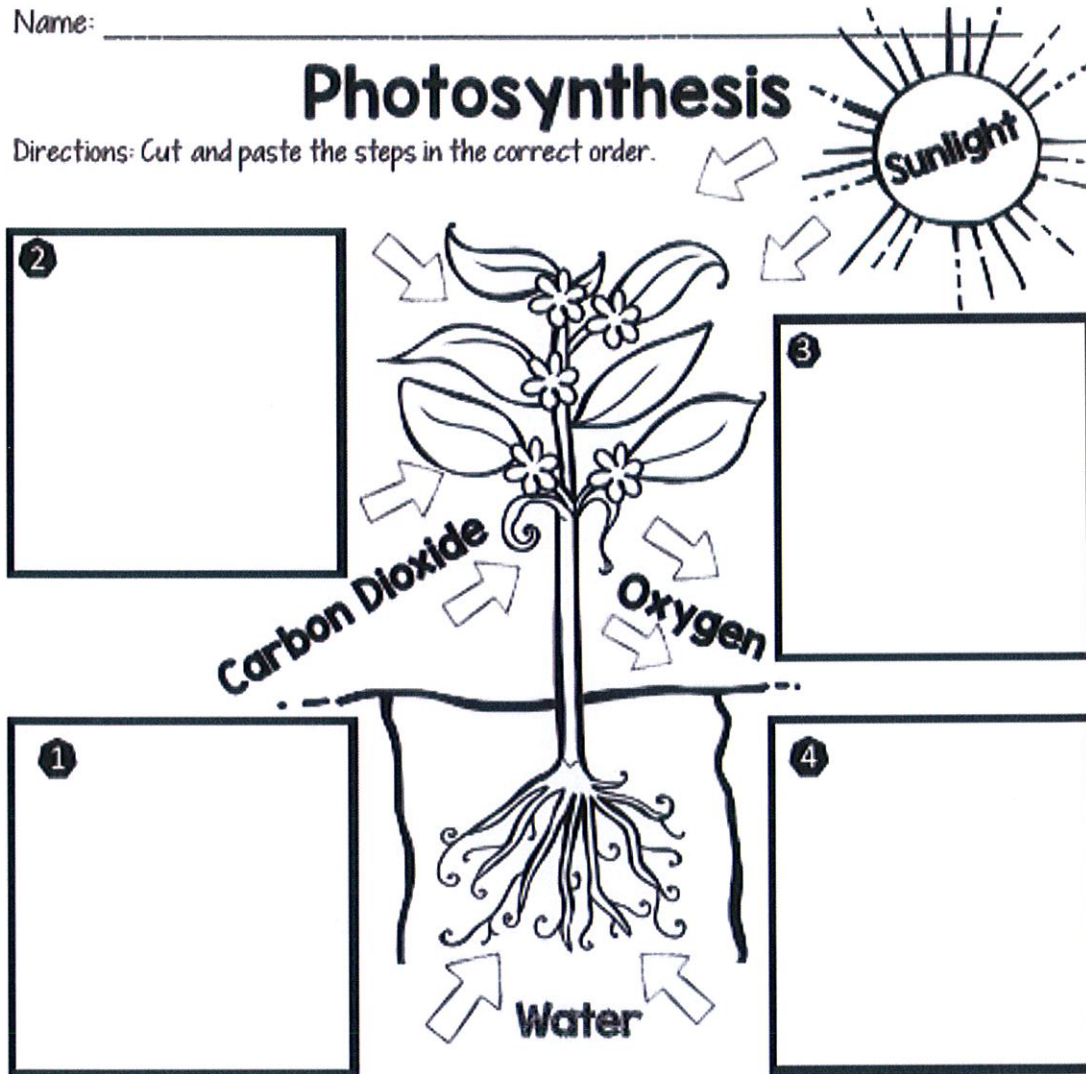
\_\_\_\_\_

**16** Describe a pattern you noticed when you were completing the problem set.

Name: \_\_\_\_\_

# Photosynthesis

Directions: Cut and paste the steps in the correct order.



<p>Sunlight give chloroplasts energy to make sugar or food.</p>	<p>The leaves take in carbon dioxide from the air.</p>	<p>The plant exhales or release oxygen into the air.</p>	<p>The plant draws up water from the ground through its roots.</p>
---	--	--	--

# PHOTOSYNTHESIS



Enters the top surface of the \_\_\_\_\_. Is the source of energy for the process of \_\_\_\_\_.

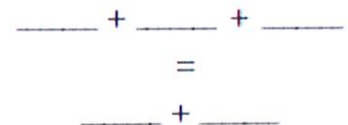
Created in the \_\_\_\_\_ and used to help the plant grow. \_\_\_\_\_ use this as their source of energy.

Enters the bottom surface of the leaves through openings called \_\_\_\_\_. Animals breathe this gas out.

Not needed by the plant. \_\_\_\_\_ into the \_\_\_\_\_ through the \_\_\_\_\_. Animals need this gas to survive.

Enters through the \_\_\_\_\_ and travels up the \_\_\_\_\_ to reach all parts of the plant.

Equation for Photosynthesis



1  
What is the source of energy plants use to perform photosynthesis?

2  
What gas do plants release into the air that is needed by animals?

3  
What gas do plants need to help make their own food during photosynthesis?

4  
What are stomata and what do they do?

5  
What do we call organisms that make their own food using photosynthesis?

6  
What process is used by producers to make their own food?

NAME: \_\_\_\_\_ DATE: \_\_\_\_\_

# STUDENT RESPONSE SHEET

1.	2.	3.	4.
5.	6.	7.	8.
9.	10.	11.	12.

What would happen to the amount of carbon dioxide in a closed terrarium if most of the plants were removed?

7

What would happen to the amount of carbon dioxide in a closed terrarium if the number of grasshoppers doubled?

8

What would happen to the amount of oxygen in an aquarium if more fish were added?

9

Why is it important to add plants to an aquarium that has fish in it?

10

What three things are needed by plants in order to perform photosynthesis?

11

Plants produce their own food during photosynthesis. What is this food called?

12

Identify the two things plants produce in photosynthesis.

sugar and oxygen

Identify the general equation for photosynthesis.

carbon dioxide + water + light →  
sugar + oxygen

Identify the process where plants use light, carbon dioxide, and water to make sugar for growth and reproduction.

photosynthesis



True or False:

Photosynthesis changes light energy from the Sun into chemical energy.

True

True or False:

Photosynthesis occurs in animals.

**False**

True Statement:  
Photosynthesis occurs in plants.

True or False:

Plants produce carbon dioxide for humans to breathe.

**False**

True Statement:  
Plants produce oxygen for humans to breathe.

True or False:

Animals that eat plants get energy from the sugar made during photosynthesis.

True

True or False:

Photosynthesis provides plants the materials they need for growth and reproduction.

True

Identify the three things plants need for photosynthesis.

carbon dioxide, water, light

Plants make their own food. This means that plants fill the role of a \_\_\_\_\_.

producer



Generation Date: 05/18/2020

Generated By: Kathern Barber

Printable Worksheet

# Questions: 10

# Photosynthesis

**Question 1.** Naomi keeps her lavender plant on her kitchen counter between the sink and the stove because there is not room for it near the window.



If the lavender cannot get sunlight coming through the window, how will it get the energy it needs to grow?

- A. from the artificial lights in the kitchen
- B. from the water in the sink
- C. from the fan on the ceiling
- D. from the heat from the stove

**Question 2.** During photosynthesis, energy from the Sun is changed into \_\_\_\_\_.

- A. salt
- B. sugar

- C. calcium
- D. nitrogen

**Question 3.** The image below shows a strawberry plant during the process of photosynthesis. The letters in the image represent substances made during photosynthesis.



What substances are represented by the letters in the image?

- A. X represents carbon dioxide and Y represents energy
- B. X represents energy and Y represents water
- C. X represents water and Y represents carbon dioxide
- D. X represents sugar and Y represents oxygen

**Question 4.**

What is the main purpose of photosynthesis?

- A. to convert oxygen gas to carbon dioxide gas
- B. to produce the food the plant needs to grow
- C. to absorb sunlight to stop the plant from freezing
- D. to allow the plant to dispose of excess water

**Question 5.**

In a forest, small white flowers called snowdrops grow around the roots of spruce trees. The spruce trees can grow to be over 60 feet tall, and their needles receive a lot of direct sunlight. The snowdrops, however, are almost always in shade, as shown in the picture below.



How do the spruce trees and the snowdrops get the energy they need to grow?

- A.** Both the spruce trees and the snowdrops get energy from photosynthesis.
- B.** The spruce trees get energy from from consuming other plants, but the snowdrops get energy from photosynthesis.
- C.** The spruce trees get energy from photosynthesis, but the snowdrops get energy from from consuming other plants
- D.** Both the spruce trees and the snowdrops get energy from from consuming other plants.

**Question 6.**

The energy that plants need for photosynthesis comes from

- A.** water.
- B.** oxygen.
- C.** sunlight.
- D.** minerals.

**Question 7.**

Which of these do plants need for photosynthesis to occur?

- A. water and oxygen
- B. sugar and water
- C. water and carbon dioxide
- D. sugar and carbon dioxide

**Question 8.**

Plants use energy from the Sun to make their own food during photosynthesis. Photosynthesis begins when a plant takes in sunlight, water, and carbon dioxide.

Which of the following are products of photosynthesis?

- A. carbon dioxide and glucose
- B. carbon dioxide and water
- C. oxygen and water
- D. glucose and oxygen

**Question 9.**

**Select each correct answer.**

Which of these does a plant take in during photosynthesis?

carbon dioxide	oxygen	sunlight	water
----------------	--------	----------	-------

**Question 10.**

Which gas is produced by photosynthesis?

- A. nitrogen
- B. oxygen
- C. argon
- D. hydrogen