

Moorhead Central School
West 506, Washington Street
Moorhead, MS 38761



6th Grade Project

6th Grade Project

Name: _____

Date: _____

Hour: _____

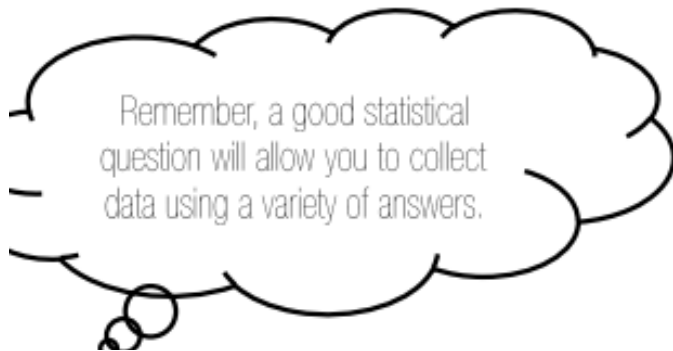
Class Survey Activity

Introduction: You will come up with a statistical question that you will use to survey your classmates. As you try to come up with your question, you will need to think of questions that will have numerical answers.

Step 1:

Asking the Right Question (2pts)

My statistical question I am going to collect data on is:



Step 2:

Collect Your Data (3pts)

You will be responsible for collecting data from the students in your class – everyone should be included. You will need to show how you collected your data and your results. You can make a list, use a tally chart, or a frequency table...however you want to organize your data is fine.

Use the space below to record your data.

Step 3:

Choose Your Graph (1pt)

Review all of the different types of graphs we have talked about in class. Decide which type of graph would work best to represent your data.

Types of Graphs

Line Graph – Displays data over time

Histogram – Displays data in categories

Dot Plot / Line Plot – Shows how often each number occurs

Stem and Leaf Plot – Plot to order a set of data

Box and Whisker Plot – Used to display data so that you can easily see where most of the numbers lie

The graph I am going to use is:

Step 4:

Display Your Data (10pts)

On a separate sheet of white paper, graphically display your data using the graph you chose above. Make sure your graph is neat and includes a title. After you finish, use color to make your graph look professional!

Step 5:

Analyze Your Data (2pts)

Use your data to answer the following questions.

- 1) List your data in order from least to greatest:

- 2) What is the mean of your data? _____

- 3) What is the median of your data? _____

- 4) What is the range for your data? _____

Step 6:

Describe Your Data (6pts)

Write a paragraph describing your results on a separate sheet of notebook paper. Use complete sentences. Include your question, how many people you asked, and the results. Next, describe your data using the center (find the mean, median, and mode), spread (find the range) and overall shape of your data (using symmetry, skewness, gaps, or outliers).

Step 7:

Present Your Data (6pts)

You will be giving a brief summary to the class about your survey. You may read your paragraph or summarize in your own words. You will also need to share your graph so we have a visual of your data.

Class Survey Activity

Statistical Question Ideas

- **How many pets do 6th graders have in their houses?**
- **How many sports do 6th graders play?**
- **How many different homes have students lived in by the time they are in 6th grade?**
- **How many brothers and sisters do students in our math class have?**
- **How many years have students in our math class played an instrument?**
- **How old are sixth graders parents?**
- **How many people live in the house/apartments of students at our school?**

7th Grade Project

Project 2: Part 1

The Restaurant

Directions: Create a menu for the restaurant of you would love to eat at. Include details on the items your restaurant will serve and include the price next to each item

Restaurant's Name:

Project 2: Part 2

The Restaurant: Dining Out

Directions: Check out your classmates menus. Choose 3 items from a menus. Find the total of your bill. Next, calculate what your bill would be with a 7% sales tax added. Finally, find the cost of your meal with tax and a 20% tip.

<p>Restaurant's Name: _____</p> <p>Item #1 _____</p> <p>Item #2 _____</p> <p>Item #3 _____</p> <p>Total _____</p> <p>7% Tax _____</p> <p>New Total _____</p> <p>20% Tip _____</p> <p>Final Total _____</p>	<p>Restaurant's Name: _____</p> <p>Item #1 _____</p> <p>Item #2 _____</p> <p>Item #3 _____</p> <p>Total _____</p> <p>7% Tax _____</p> <p>New Total _____</p> <p>20% Tip _____</p> <p>Final Total _____</p>
<p>Restaurant's Name: _____</p> <p>Item #1 _____</p> <p>Item #2 _____</p> <p>Item #3 _____</p> <p>Total _____</p> <p>7% Tax _____</p> <p>New Total _____</p> <p>20% Tip _____</p> <p>Final Total _____</p>	<p>Restaurant's Name: _____</p> <p>Item #1 _____</p> <p>Item #2 _____</p> <p>Item #3 _____</p> <p>Total _____</p> <p>7% Tax _____</p> <p>New Total _____</p> <p>20% Tip _____</p> <p>Final Total _____</p>

8th Grade **Project**

Transformation Project Directions

1. You will need to draw a detailed pre-image of a picture that has **at least 10 points**. Your pre-image needs to be completely inside one of the quadrants on the coordinate plane (it can be any quadrant).
2. Place points at all of the vertices and label them in alphabetical order. If you have more than 26 points then start to label your points AA, BB, CC and so on.
3. Translate, reflect and rotate your image in any order you want. I need to determine if your transformations are correct, so ensure that you write all the points on the transformation data sheet.
4. All images should tell what transformation was used and show the direction the image is moving (clockwise or counter-clockwise) by using an arrow.
5. Document all of the transformations and label the vertices correctly. Check your rubric for questions on grading. This project will take ____ days to complete in class. Anything you do not finish in class is homework.
6. **EXTRA CREDIT:** Dilate your image, make sure to include the scale factor used, ordered pairs, as well as the picture of the dilated image.

Name: _____

Transformation Project Data Sheet

Point	Pre-Image			
A				
B				
C				
D				
E				
F				
G				
H				
I				
J*				
K				
L				
M				
N				
O				
P				
Q				
R				



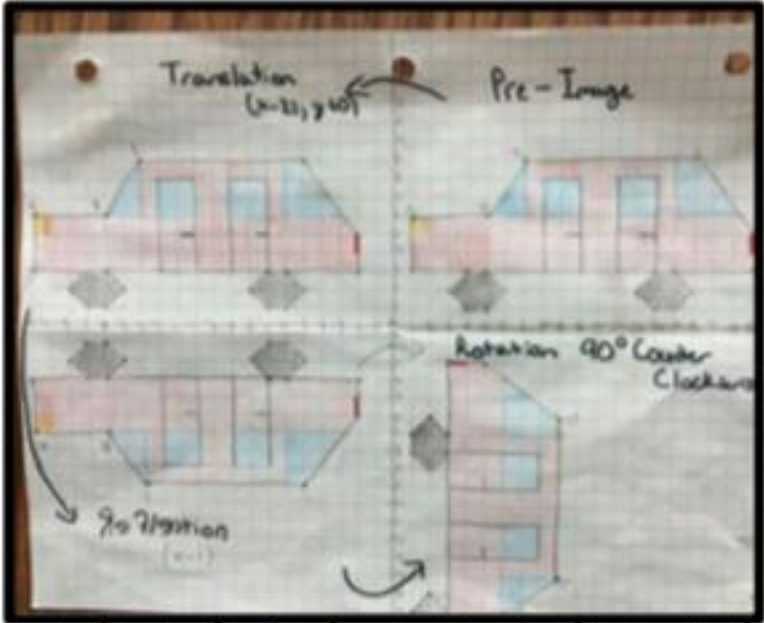
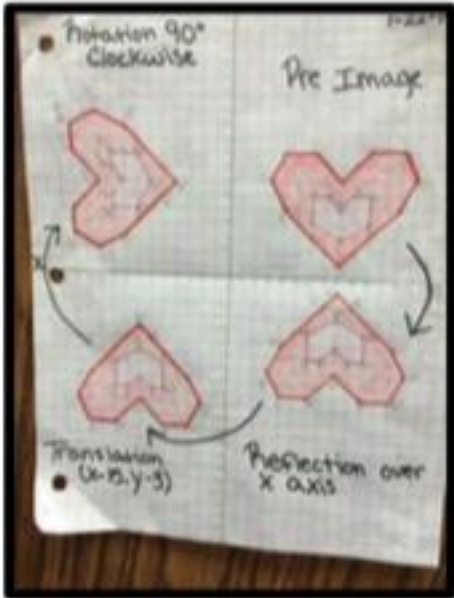
Name: _____

Transformation Project Data Sheet Continued

Point	Pre-Image			
S				
T				
U				
V				
W				
X				
Y				
Z				
AA				
BB				
CC				
DD				
EE				
FF				
GG				



Examples



Moorhead Central School
West 506, Washington Street
Moorhead, MS 38761

