

North Hampton School Student Assessment Report

Phone 964-5501

Fax 964-9018

www.northhamptonschool.org

February 2005



201 Atlantic Avenue
North Hampton, NH
03862

"There are well over 100,000 public and private schools in the country. Of those schools, fewer than 300 can claim to be Blue Ribbon Schools. That's less than 1/2 percent."

*Secretary Rod Paige
at the 2004 Washington, DC awards ceremony*

A Message From the School Board

Thank you for taking a moment to read this annual report about North Hampton School students. We hope you find the information understandable and enlightening. Please feel free to contact a school board member with feedback or suggestions for future reports.

The data compiled from last year continues to show a strong trend in achievement among NHS students. The recognition as the New Hampshire Middle School of Excellence and the receipt of the federal Blue Ribbon School Award were honors that validated what we have known to be true – that the North Hampton School, and its students, teachers, administrators, parents and community are outstanding. Most importantly, our efforts toward continual improvement never cease.

It is also rewarding to note that the goal to foster a love of learning, and develop each child's understanding of themselves as a learner, thereby encouraging life long learning, is being realized when we see that 87% of our students left high school this year to pursue post secondary education. This and other measures of success are sometimes overlooked in our tendency to focus on test scores. In the future, the development of "exhibitions of learning" opportunities for students to demonstrate their understanding and skills in a variety of situations will expand our assessment methods.

We would like to thank all the individuals who are involved in the education of students at NHS for their efforts and particularly to recognize the extraordinary gift of time, energy and expertise our teaching staff brings to our students.

Kim Kisner, Mary Coppinger, Janet Gorman, Henry Marsh, Andrew Hart

NHS Recognized as One of the Top Schools in Country

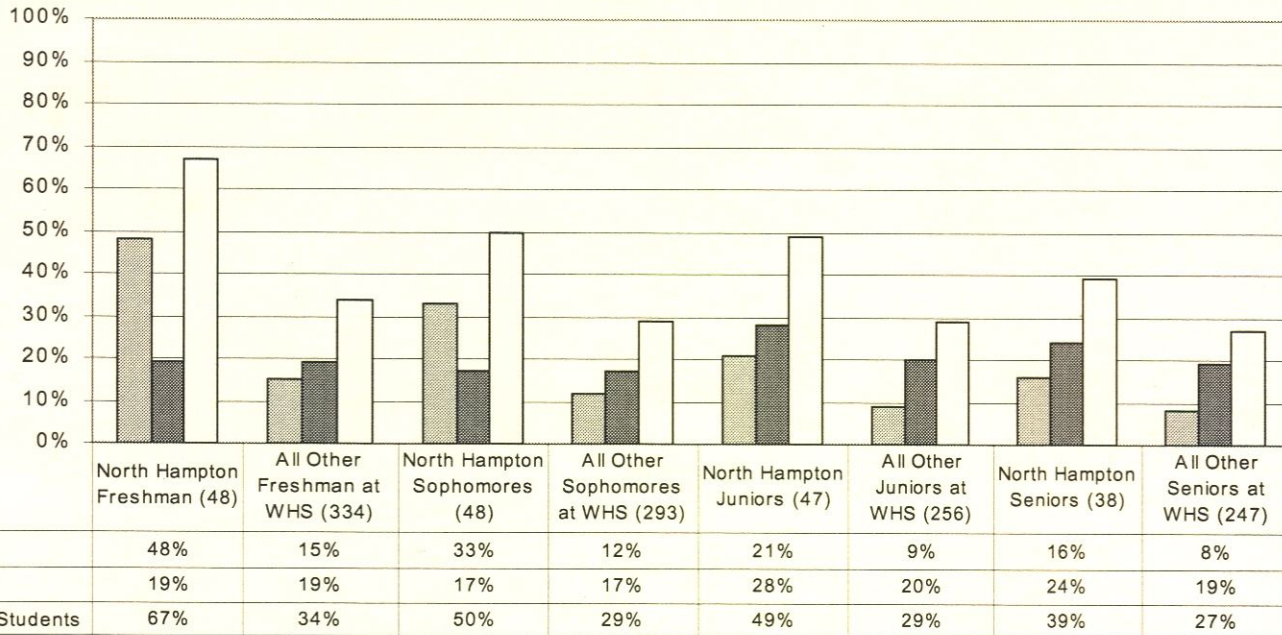
An exciting outcome of last year's ANHEIAP's results was the nomination of the North Hampton School by the state as a federal Blue Ribbon School under the "No Child Left Behind Act." The application process took place during the 2003-2004 school year and in September of 2004 North Hampton School received the 2004 No Child Left Behind Blue Ribbon School Award. This national award honors public and private schools that are either academically superior in their states or that demonstrate gains in student achievement. Indicators of academic success and curriculum and instruction were the two main categories required on the application. To view the application, go to the home page of the NHS website: www.northhamptonschool.org



Contents

NHS Grads as High School Freshmen	2
Do All Our Students Go to WHS?	2
Changes in State Testing	2
NWEA 2004 Testing	3
NHEIAP Scores	4
NHEIAP Data Interpretation	4
The NH Middle School of Excellence	6
How Do NHS Students Compare at WHS? ..	7
What Do NHS Students Do After WHS?	7

How Do North Hampton Students Compare to Other Students in WHS ?



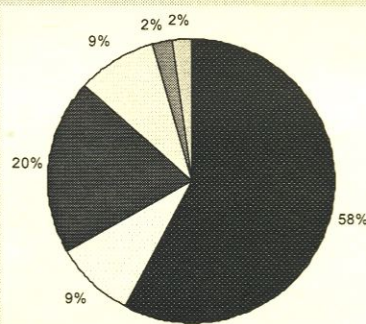
High Honors: GPA 3.5 or higher, no C's, taking at least 4 classes; **Honors:** GPA 3.0 or higher, may have one C, taking at least 4 classes

What Do NHS Students Choose to Do After Winnacunnet High School?

	NHS Class of 1998 / WHS Class of 2002	NHS Class of 1999 / WHS Class of 2003	NHS Class of 2000 / WHS Class of 2004
• Graduated eighth grade	42 students	52 students	51 students
• Entered private schools	7 students	7 students	9 students*
• Later transferred/moved away	8 students	7 students	6 students
• Transferred to WHS from private	0	2 students	0
• In final cohort group.	27 students	40 students	36 students
After 4 years in high school:			
• Withdrew from school	1 student	0	4 students
• GED	0	1 student	1 student
• 5th year	1 student	1 student	0
• Accepted @ 4 year colleges	16 students (59%)	29 students (72.5%)	26 students (72%)
• Accepted @ 2 year colleges or technical school	4 students (14%)	4 students (10%)	4 students (11%)
• Entered military	0	1 student	0
• Entered work force	3 students (14%)	2 students	1 student
• Other (travel, Americorp, etc.)	2 students	2 students	0

87% of NHS Students Went on to Post Secondary Schools in 2004

WHS to 4 year college	26 (58%)
WHS to 2 year college	4 (9%)
Private School to 4 year college	9 (20%)
Total	(87%)
Withdrew from School	4 (9%)
Entered work force	1 (2%)
GED	1 (2%)



* Of the 9 students who attended private high schools, 100% went on to 4 year colleges bringing NHS total at 4 year colleges to 87%

- 3 out of the top 10 students in WHS class of 2004 were NHS graduates. They will be attending: Smith College, Colby College, and Penn State University.

The New Hampshire Middle School of Excellence

North Hampton School was recognized as the New Hampshire Middle School of Excellence. This award was based on six categories in education:

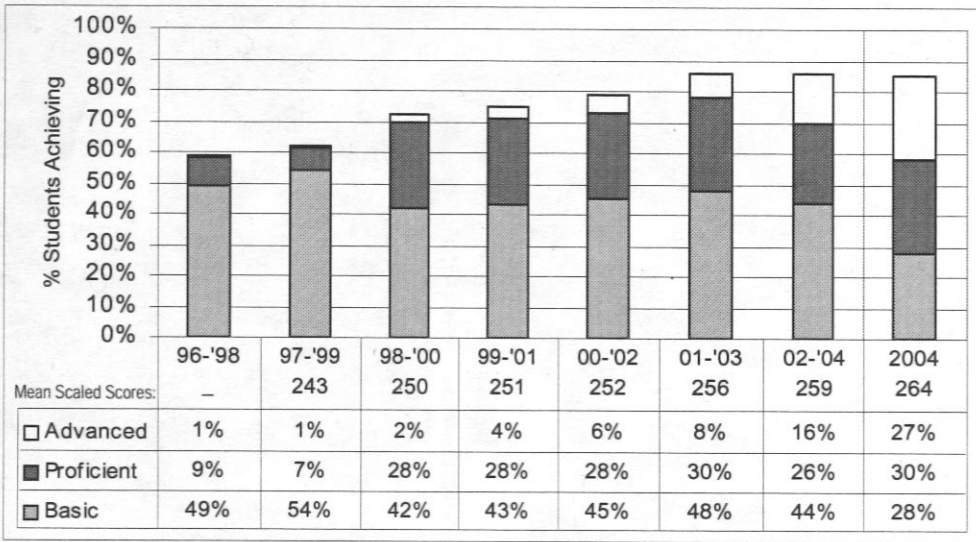
- Curriculum and Instruction,
- Teaching and Learning,
- Student Achievement,
- Community/Parent Involvement,
- Leadership/Decision Making, and
- School Climate.

A selection team visited classrooms and spoke extensively with students, toured the school, met with teachers, interviewed parents and school board members, spoke with NHS alumni and conversed with administration. To view the award application, go to the home page of the NHS website: www.northhamptonschool.org

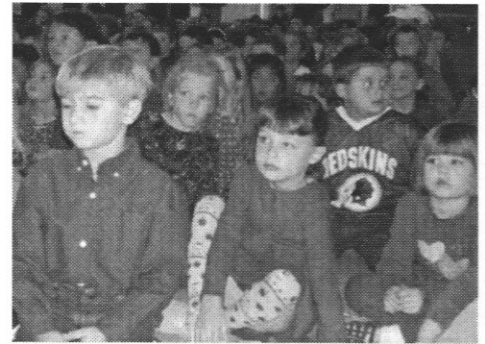


Percentage of Students Achieving New Hampshire Department of Education Goal of Basic and Above

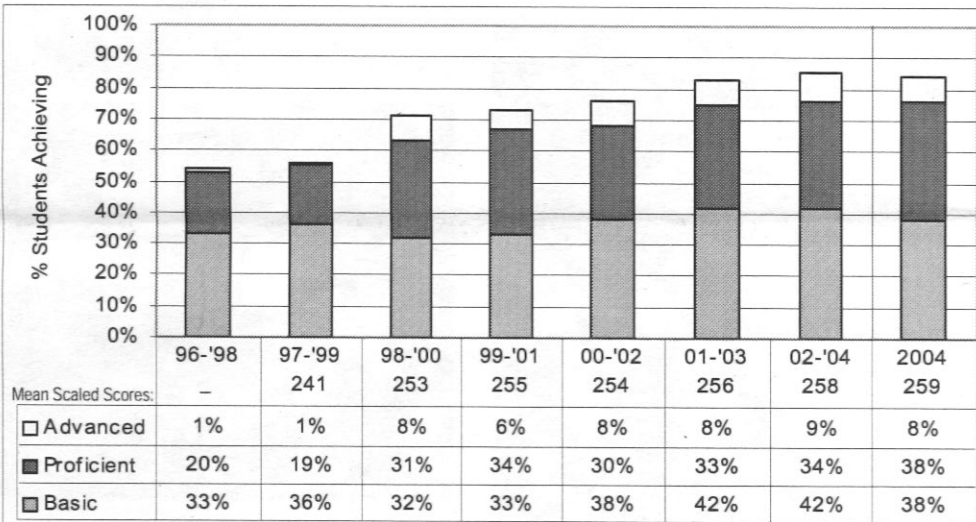
Sixth Grade NHEIAPS — Rolling 3 Year Averag + 2004



6th Grade NHEIAP
Language Arts Results

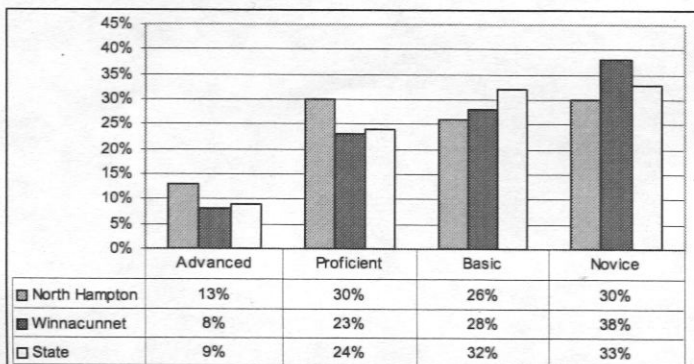


6th Grade NHEIAP
Mathematics Results



NHEIAPS — Grade 10 — 2003 - 2004

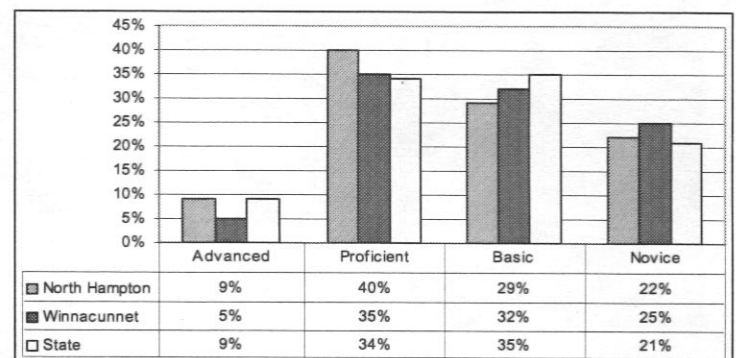
10th Grade NHEIAP Math Results



Math Mean Scaled Scores:

NHS	WHS	State
254	249	251

10th Grade NHEIAP Reading Results



Reading Mean Scaled Scores:

NHS	WHS	State
255	252	255

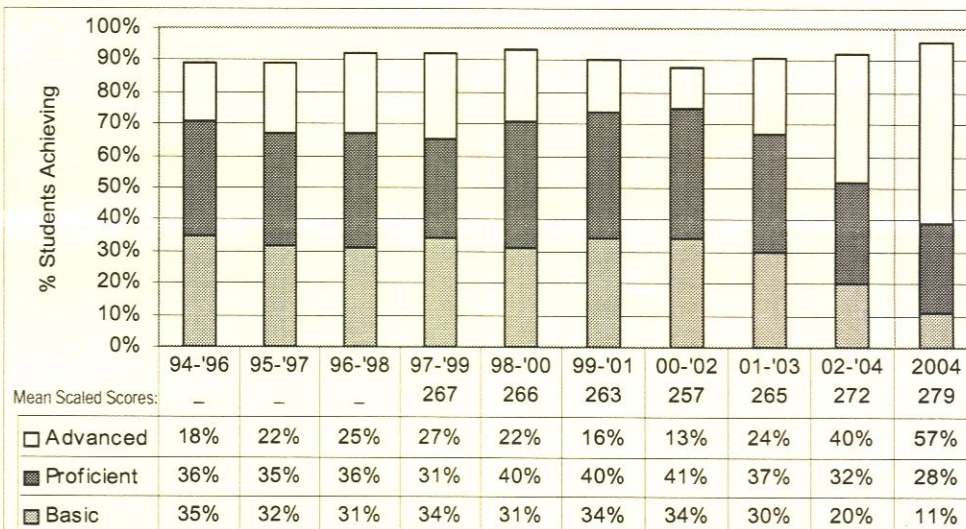
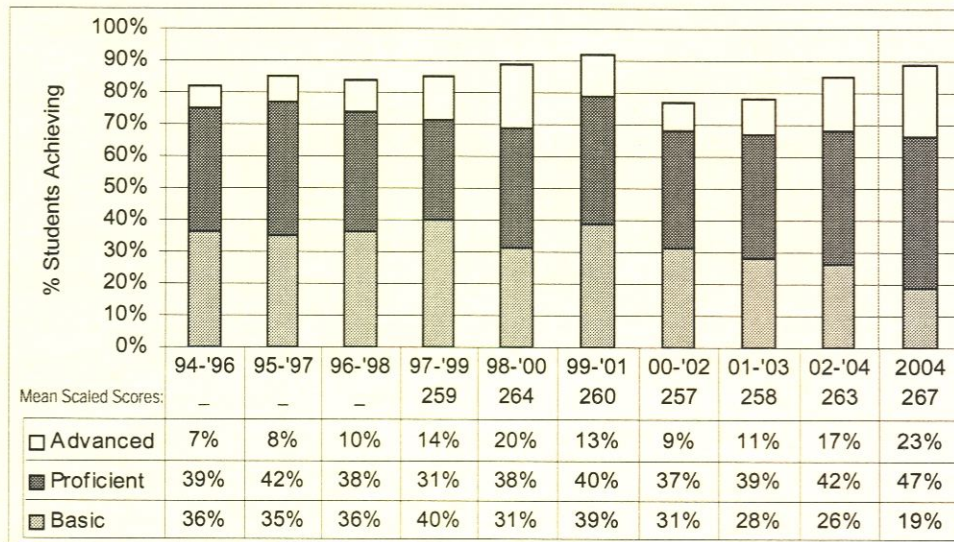
Percentage of Students Achieving New Hampshire Department of Education Goal of Basic and Above

Third Grade NHEIAPS — Rolling 3 Year Average + 2004

3rd Grade NHEIAP Language Arts Results



3rd Grade NHEIAP Mathematics Results

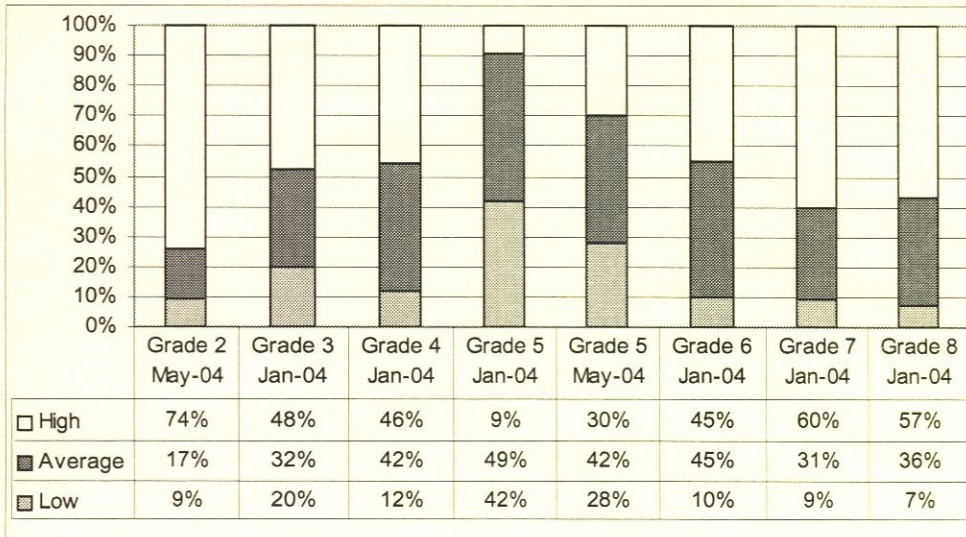


Background and Data Interpretation

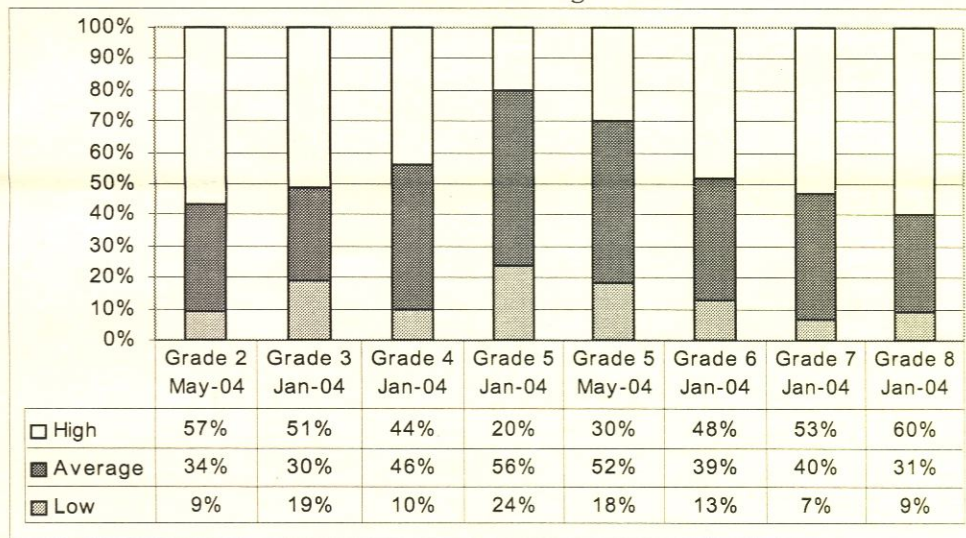
- Reading & Mathematics test given in May 2004 to all New Hampshire 3rd, 6th, and 10th graders
- Inadequate state funding to continue writing, social studies and science testing
- Results grouped in 4 categories: Novice, Basic, Proficient, Advanced
- Students who score at Basic, Proficient, Advanced are making progress towards obtaining adequate education as defined by "No Child Left Behind".
- Data presented as % of students scoring in each category and as mean scaled score
- Mean scaled scores range between 200 and 300 and represent an average of all student performance within a grade.
 - Novice is between 200-239
 - Basic is between 240-259
 - Proficient is between 260-270
 - Advanced is between 280-300
- Rolling 3 year averages are used to smooth fluctuations due to small class size
- 100% of NHS 3rd graders and 6th graders tested

NWEA 2004 Testing

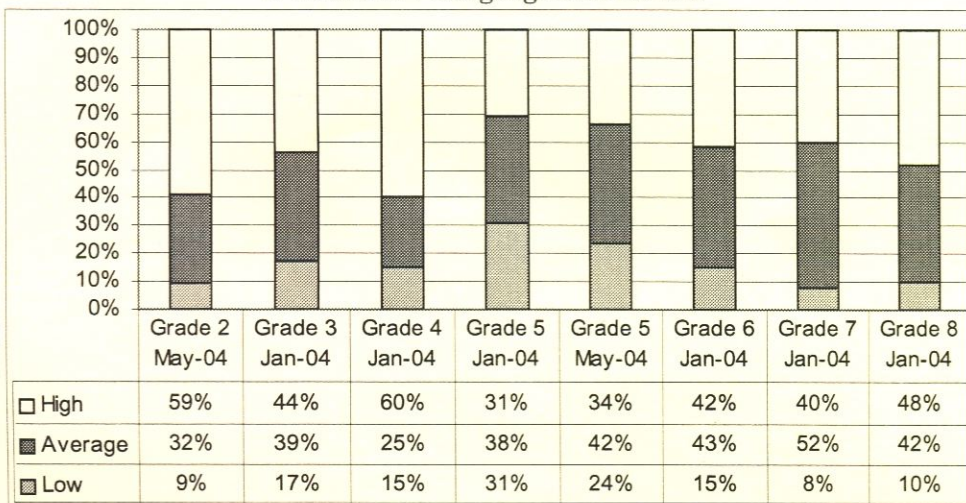
NWEA 2004 Mathematics Results



NWEA 2004 Reading Results



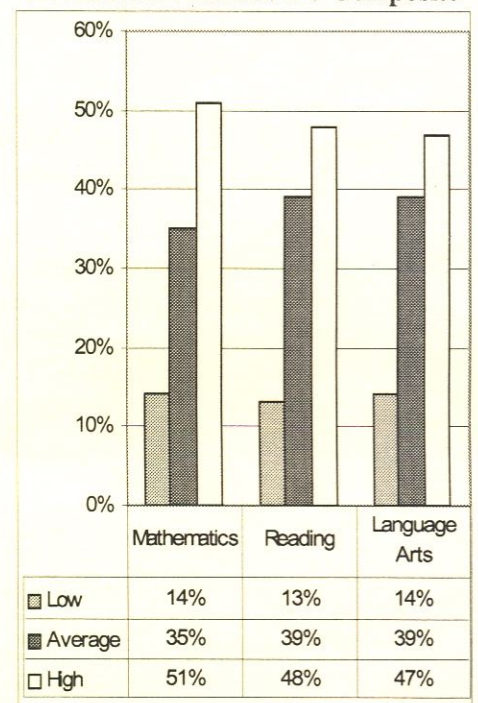
NWEA 2004 Language Arts Results



Historically, the New Hampshire Educational Improvement and Assessment Program (NHEIAPs) has been the standardized test issued by the state. Within the past few years and under the educational requirements of the No Child Left Behind Act (NCLB), the state has decided the NHEIAP is not sufficient. In the absence of this test, SAU#21 selected the NWEA as a substitute test for the 2003-04 school year. The North Hampton School administered this test in January and May of 2004 for grades 2-8 with positive results. The composite scores for grades 2-8 presented 86% of our students in the average to high category in Mathematics, 87% in the average to high category for Reading, and 86% in the average to high category for Language Arts.



NWEA 2004 Grades 2-8 Composite



Do All Our Students Go to Winnacunnet High School?

The majority of NHS students do go to WHS. However, every year some students choose to apply to private high schools. The acceptance rate and decision to attend varies from year to year.

6 Year History:

- 2000 9 students (18%)
- 2001 4 students (8%)
- 2002 12 students (15%)
- 2003 11 students (17%)
- 2004 10 students (17%)

NHS students are currently attending:

- Berwick Academy,
- Brooks School,
- Governor Dummer Academy,
- Holderness Academy,
- Loomis Chaffee School
- Phillips Andover Academy,
- Phillips Exeter Academy,
- St. John's School,
- St. Thomas Aquinas.

How Do NHS Graduates Perform as High School Freshmen?

NHS 2004 Graduates (59)

- WHS 48
- Phillips Exeter Academy 3
- Berwick Academy 2
- St. Thomas Aquinas 1
- Governor Dummer 1
- St. John's Prep 3

Percent of NHS 2003 Graduates on Honor Roll

Of the 59 graduates:

- 1 student moved

58 Students accounted for:

- 67% NHS students at WHS are on honor roll
- 70% NHS students in private school are on honor roll
- 68% of all NHS 2004 Graduates are on honor roll

Changes in State Testing

The Education Departments of New Hampshire, Rhode Island, and Vermont have decided to collaborate on the testing of all public school students in these three states. These tests, the New England Common Assessment Program (NECAPs), will be newly created assessments based on a common set of standards known as the Grade Level Expectations (GLEs). A GLE is an objective aligned with state standards by grade, which differentiates performance on concepts and skills between adjacent grade levels. Teams of educators from the three states have been developing the GLEs for the past two years. The GLEs will allow one to clearly see expectations for all students at the end of each of grades 2-8.

Under NCLB, each state is responsible for developing expectations for student achievement in mathematics and reading/language arts in each of grades 3-8. Beginning in the 2005-06 academic year, students will take these examinations in reading and mathematics. In addition, students in grades 5 and 8 will be assessed in writing. Science tests have to be added by the 2007-08 school year. This fall, NECAP pilot tests were administered.

With these new GLEs, local assessments will be fine-tuned to include concepts and skills not easily assessable in an on-demand setting. A specific goal of the North Hampton School's School Improvement Plan is to expand and define a comprehensive assessment and reporting plan directly linked to student achievement. The assessment committee had been meeting this summer and had begun the work of identifying and defining the numerous modes of assessment currently used in our classrooms.

In alignment with this goal is the defining/development of an exhibition process for the school. Exhibitions of learning provide students with opportunities to demonstrate their understanding and to thoughtfully apply knowledge, skills, and habits of mind in a variety of structured and unstructured situations. These assessments often occur over time and result in a tangible product of observable performance. With the implementation of student exhibitions of learning, schools are able to provide community members with an opportunity to view the education in their school. Internally, the exhibitions make the school accountable by providing significant information on what and how students are learning. Most importantly, exhibitions encourage students to move toward more profound understandings in their learning.

