

Senior College Application Process 2017

Sponsored by your Lawrence High School
Guidance Counselors

Ms. Belani
Mr. Diamond
Mr. Donaghy
Mr. Labriola
Ms. Paz

Evidenced Based Reading and Writing(200-800score),
Math (200-800 score)and Essay (optional**** and 3
scores ranging from 2 to 8-Reading, Analysis and
Writing)

- **SAT I-** \$46.00

- (with writing)-\$60.00

- **SAT II-**\$26.00 +

\$21.00 per basic subject test

(Except Language Tests with listening section)

ACT – \$46.00 (\$62.50 with Writing)

➤ *Fee Waivers are available for all tests, if eligible.*

➤ *See your counselor if you think you qualify.*

SAT I & II TEST DATES 2016-2017

<u>TEST DATE</u>	<u>REGULAR REG</u>	<u>LATE REG</u>
OCTOBER 7	PASSED	PASSED
(can still sign up for waitlist online up until 5 days prior to exam)		
NOVEMBER 4	OCTOBER 5	OCTOBER 25
<i>(Additional fees are required for late registration and/or waitlist registration)</i>		
DECEMBER 2	NOVEMBER 2	NOVEMBER 21

SAT II=Subject Tests

- Who should take the SAT II?
- Exam dates are the same as the SAT I
 - *You can take up to three exams in one sitting*
- NOT mandatory – check with the schools you are applying to and see if they are required*
- Recommended = Required
- *Note: with the new structure of the SAT, fewer schools “require” the SAT subject tests and/or will use your ACT in its place.

ACT[®]

- Subject based entrance exam (www.act.org)
- Measures English, Math, Reading and Science Reasoning (score range 1 to 36)
- Optional Writing (score range 2 to 12)
- May replace SAT II's at some colleges
- Students with disabilities: see your counselor to make sure your online application for accommodations is complete for SAT as well as ACT
- Test Dates: 10/28 (Late Registration Deadline 10/6), 12/9 (Late Registration Deadline November 17th)

Early Decision and Early Action

- What is the difference between early decision and early action?
- How many schools can you apply to early decision?
 - ANSWER: ONE!
- 100% sure!
- Some schools can defer you to regular applicant pool
- All materials must be submitted to your counselor at least **TWO weeks** prior to admissions deadline
- Students with family financial hardship should explore HEOP (www.HEOP.org), EOP (SUNY) and SEEK (CUNY) Programs. (Please see your counselor for more info.)

THE TRANSCRIPT

- Review your transcript to make sure it is accurate.
- The class size of 2018 is 257 seniors.
- Lawrence High School does NOT rank.
- GPA scale = 100
- 1 year course = 1 credit
- One 1/2 year course = 1/2 credit

Letters of Recommendation

- **Two Teachers: Education Section on Common App Must be Complete First**
 - ✓ Communicate with your teacher and ask if they will write your letter of recommendation.
 - Log on to your Family Connection/Naviance Account
 - Colleges
 - Letters of Recommendations
 - Add Request (scroll down and select teacher name)
 - Check "all schools" or check off "specific school names"
 - Include personal note
 - Use this space to remind teachers of any important or significant information
 - Great space to say "thank you"
- **One Guidance Counselor Letter**
 - ✓ Submit your LHS Senior College Survey and deliver to your counselor ASAP!
 - ✓ Activity/Resume sheet
 - (one hard copy must be submitted to counselor & teachers writing letters)*

Your College Essay

- Your college essay should be in motion
- Check with colleges/common application to see essay topics (250-650 words)
- Discuss content with English teacher and/or guidance counselor
- Ask an English teacher to review (grammar)
- Share a copy of essay with your counselor
- Submit essay with application online (copy and paste)
- Supplemental essays as well...

College Application Procedures

- **It is highly recommended that all students use the Common Application which is available at www.commonapp.org**
- Nassau Community College applications are now submitted online at www.ncc.edu
- CUNY applications are only available online only at www.cuny.edu
- SUNY applications are available at www.SUNY.edu or by using the Common Application in many instances
- College Room is located in the guidance office
- After one completed application, set up an appointment with your Guidance Counselor

College Application Procedures (continued)

- Every senior **MUST** have a Family Connection by Naviance Account . Please see your counselor immediately to discuss.
- See your counselor for your **Registration Code**
- Students using the Common Application must “match” Naviance and the Common Application ASAP
- Please refer to the sheet titled “Linking Family Connection and Common App”
- Students must complete FERPA (*Family Educational Rights and Privacy Act*) waiver before moving forward
 - All Guidance Materials will be submitted via Naviance:
Transcript, School Form, Counselor and Teacher Letter of Recommendation and School Profile

How will my transcript get to the college on time?

- Students must turn in a LHS Records Release Form (pink form) at least **TWO weeks** prior to any deadline. “Pink Forms” are required for **EVERY** school that you apply to!
- You must submit your application before turning in “pink form”
- One form per school:
 - Example; 10 schools = 10 pink forms.
- Once your application is submitted, you can check your status via Naviance; and with your colleges.

Let's Review

- Naviance Account
- Common App Account
- **FERPA** (students and parents waive access to see materials sent by LHS . It shows the colleges that the students have nothing to hide in terms of LHS sending recommendations, transcripts, etc.)
- “Match” (Common App and Naviance)
- Activity Sheet
- LHS Senior College Survey
- Records Release Form (pink)

Let's Review One Last Time...

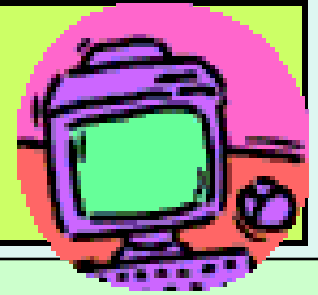
- ALL Materials **MUST** be submitted at least **TWO WEEKS** prior to **ANY DEADLINE**
- Your Guidance Counselor Receives:
 - Activity Sheet
 - LHS Senior College Survey
 - Records Release Form
- Your Teacher Receives:
 - Activity Sheet
 - An email request from you via Naviance
 - Teacher Recommendation Form, if applicable

Financial Aid



- FAFSA – free and online at **www.fafsa.ed.gov**. The FAFSA must be completed online and is time sensitive.
 - Available October 1st!!!!
 - Start by creating your FSA ID
 - **www.fsaaid.ed.gov**
- **CSS profile** available online (check to see if schools you are applying to require it).
- Financial aid is based on need NOT merit!
- Fill out FAFSA regardless of family income, you may be eligible for merit \$\$\$.

Helpful Websites



www.connection.naviance.com/lawrenceny

www.collegeboard.com

www.act.org

www.fastweb.com

www.fafsa.ed.gov

www.meritaid.com

www.careercruising.com

Username: Lawrence

Password: Careers

Scholly is a scholarship search app for you mobile device.

\$ Scholarships \$

Be sure to review the Senior Scholarship Bulletin AND contact each individual school for scholarship opportunities from your school(s) of choice.

www.lawrence.org Bulletins
begin in mid October



Your Guidance Counselor

- We're here to help!
- Make an appointment to see your counselor.
 - Please ask questions.
 - Get applications out on time or ASAP
 - Attend College Fairs
- Meet with college representatives that visit LHS!
 - Check your Naviance email for important announcements and college visit schedule
 - Visit schools.

QUESTIONS



Have Fun.
Stay Organized.
Good Luck!