



ROCK CREEK  
ELEMENTARY



## The Rocketeer

### October is National Bullying Prevention Month

#### WHAT IS "BULLYING?"

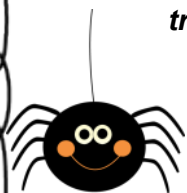
Bullying is unwanted, aggressive behavior among school-aged children that involves a real or perceived power imbalance. The behavior is repeated, or has the potential to be repeated, over time.

#### TYPES OF BULLYING

- Verbal Bullying**- includes teasing, name-calling, spreading rumors, gossiping, taunting, threatening
- Physical Bullying**- hitting, kicking, pinching, tripping, pushing, taking or breaking someone's things, unwelcomed contact
- Social Bullying**- leaving someone out on purpose, telling other children not to be friends with someone, humiliation or embarrassing someone in public
- Cyber-Bullying**- sending harassing, embarrassing, or unwelcome emails or text messages, ridiculing someone publically in online forums, posting lies, rumors or gossip and encouraging others to distribute that information

*Encourage your child to report bullying incidents to school officials. And as the parent, talk with the teacher, counselor, or principal about the problem.*

***Every student deserves to be treated with respect and have a safe learning environment.***



### ATTENDANCE MATTERS

Illness plays a significant role in early childhood absences. Children will get sick at times and may need to stay at home, but we want to work with you to help minimize the number of days your student misses school. It is important for families to understand when to send a child to school or keep him/her at home.

*When is your child too sick for school? Turn over and read the graphic on the other side of this newsletter.*



### Important Dates

- Oct. 2- Parent-Teacher Conf.
- Oct. 5-12- Fall Break
- Oct. 18- Family Fun Night
- Oct. 19- Walk to School Day
- Oct. 22-26- Red Ribbon Week
- Oct. 27- **Fall Festival**

### Did you know...

If you could hop in a car and drive to the sun going 55 miles per hour, it would take you about 193 years to get there!

