



SIGNAL MOUNTAIN MIDDLE HIGH SCHOOL

School Profile 2014-15

2650 Sam Powell Trail
Signal Mountain, TN
37377

Signal Mountain Middle/High School is a co-educational public school within the Hamilton County Department of Education. Founded in August 2008, the school serves students in grades 6 through 12. Signal Mountain is a suburban mountain community 12 miles from downtown Chattanooga, Tennessee. Prior to the addition of the high school, Signal Mountain Middle School served middle school students for more than fifty years at a nearby location on Ault Road. The first group of seniors graduated from SMMHS in May, 2010. Our elementary feeder schools, Thrasher & Nolan are top academically in the state. Signal Mountain schools have incredible parent and community support and assistance from a local funding group, The Mountain Education Foundation.

International Baccalaureate

Signal Mountain Middle High is the largest IB World School in Tennessee. SMMHS became accredited to offer the Middle Years Program (MYP) for all students in grades 6—10 in 2010 and the IB Diploma Program (DP) for 11th & 12th grade students in 2011. Students in the class of 2013 were the first group with the opportunity to graduate with an IB Diploma. Students who do not choose to participate in the IB Diploma Program in the 11th & 12th grade may choose to take up to three IB courses, honors and Dual Enrollment/Early College courses offered on our campus through Chattanooga State Technical Community College.



Participation in honors, AP and IB Diploma Program courses is open to all students by choice. Dual Enrollment courses are open to 11th and 12th grade students who qualify for admission to the community college based on college-ready ACT or Compas score.

- 26% of seniors in the class of 2015 are IB Diploma candidates and take a full load of IB courses in 11th & 12th grade.
- 29% of seniors take between one and three IB courses along with other course selections.
- 43% of IB Diploma students in Class of 2014 earned the IB Diploma distinction. 59% of students earned 24 total points or more on their IB Exams.

SCHOOL DEMOGRAPHICS

TOTAL ENROLLMENT: 1287

Middle School: 590 High School: 697

of Seniors : 166

92% White/Caucasian 3.4% African American

2.1% Hispanic 2.1% Asian

14.7% students in Federal Free & Reduced Lunch

SCHEDULE- Signal Mountain Middle High operates on a year-long traditional schedule with seven periods and a Directed Studies activity period. Classes meet three times a week. The high school operates on a semester system and the middle school operates on quarters where final grades are determined at the end of the school year. Final grades for high school are determined at the end of the semester. The first and second semester grades for high school do not average together for a year-long average.

Class of 2015 ACT Testing Information as of June, 2014 ACT Composite Range: 13—35

Middle 50% ACT Range: 23 –24

ACT Range	# Seniors	% of Class
13—19	28	17
20—22	34	21
23—24	32	20
25—27	30	19
28 –35	37	23

Grade Point Averages (GPA) are determined on the basis of all high school credit courses. The cumulative unweighted GPA is calculated at the end of each semester. Letter and numerical grades are listed on the student's transcript. 3 points are added to the final numerical semester average for honors & Dual Enrollment courses. 5 points are added to AP and IB numerical averages.

A	93—100	B	85 – 92	C	75—84
D	70—74	F	0—69		

Unweighted GPA	#	%
4.0	7	4
3.5—3.00	50	30
3.0—3.49	49	30
2.5—2.99	32	19
2.0—2.49	19	12
Less than 2.0	8	5

Phone 423) 886-0880
Fax (423) 886-0894
smmhs.com

ADMINISTRATION

Principal

Robin Copp

Assistant Principals

Lesa Johnson

Justin McCulley

Michael Reese

IB Coordinator

Marquita Thomas

Thomas_marquita@hcde.org

(423) 886-0880 ext. 240

SCHOOL COUNSELING

College Advisor-

Sandy Mitchum

Mitchum_S@hcde.org

(423) 886-0880 ext 279

Counselors-

Sherry Dagnan, Ed. D.

Dagnan_S@hcde.org

(423) 886-0880 ext 280

Leslie Sharpe

Sharpe_L@hcde.org

(423) 886-0880 ext 278

Aramitta Chestnutt

Chestnutt_A@hcde.org

(423) 886-0880 ext 277

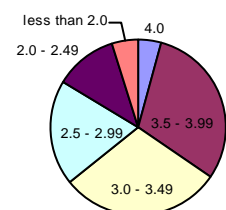
Registrar

Ms. Lizetta Eitner

Eitner_L@hcde.org

(423) 886-0880 ext 276

Cumulative Unweighted GPA of Seniors



SIGNAL MOUNTAIN MIDDLE HIGH SCHOOL

School Profile 2014-15

CURRICULUM COURSES AVAILABLE TO STUDENTS IN THE CLASS

ENGLISH (4 credits required)

9th- English 9, Honors English 9
10th- English 10, Honors English 10
11th- English 11, Honors English 11
11th IB- IB English 3 SL or HL
12th- English 12, Dual Enrollment English
12th IB- IB English 4 SL or HL

Heritage German is offered for native German speakers each year.

MATHEMATICS (4 credits required)

8th- Honors Algebra 8, Honors Geometry
9th- Algebra 1, Honors Geometry, Honors Algebra 2
10th- Geometry, Honors Algebra 2, Honors Pre-Calculus
11th- Algebra 2, Adv Algebra/Trig, Honors Pre-Calculus,
11th IB- IB Math Studies 1 SL, IB Math 1 SL,
IB Math 1 HL
12th- Bridge Math, Adv Alg/Trig, Statistics,
Dual Enrollment College Algebra or Pre-Cal
12th IB- IB Math Studies 2 SL, IB Math 2 SL,
IB Math 2HL

SCIENCE (4 credits required)

8th- Physical Science
9th- Honors Biology, Physical World Concepts
10th- Chemistry, Honors Chemistry
11th- Physical World Concepts, Anatomy & Physiology, Biology 2
11th IB- IB Biology 2 SL/HL, IB Physics 2 (SL or HL),
IB Chemistry 1 SL or HL)
12th- Biology 2, Anatomy & Physiology, Ecology,
Chemistry 2, Ecology
12th IB- IB Biology 3 (SL or HL), IB Physics 3 (SL or HL),
IB Chemistry 2 (SL or HL)

SOCIAL STUDIES/ HUMANITIES (3 credits required)

10th- World History, AP World History
11th- US History, Dual Enrollment College US History
11th IB- IB History of the Americas 1 HL
12th- Economics, Government
12th IB- IB Hist. of the Americas 2 HL

FOREIGN LANGUAGE / LANGUAGE B (2 minimum)

As part of the International Baccalaureate Middle Years Program, all students are required to take Foreign Language/Language B every year from 6th through 10th grade. Students who choose to participate in the IB Diploma Program in 11th & 12th grade are required to continue in Language B for the 6th and 7th year of the language during the junior and senior year.

8th- Spanish 8, French 8 (equivalent to Span/French 1)

9th- Spanish 1, Spanish 2, French 1, French 2

10th- Spanish 2, Spanish 3, French 2, French 3

11th- Spanish 3, French 3

11th IB-IB Spanish IV SL, IB French IV (SL or HL)

12th IB- IB Spanish V SL, IB French V (SL or HL)

FINE ART—1 minimum required

9th—12th- Art 1, Art 2, Art 3, Art 3/4, Concert Band, Instrumental Strings, Theatre 1, Theatre 2, Theatre 3, Creative Writing
11th IB- IB Visual Art 1 (SL or HL), IB Music 1 SL, IB Theatre 1 SL, IB Film 1

12th IB- IB Visual Art 2 HL or SL, IB Music 2 SL,
IB Theatre 2 SL, IB Film 2(SL or HL)

Other Courses & ELECTIVES-

Wellness, PE, Weight Training, Contemporary Issues, Psychology, Sociology, Accounting, ACT Prep, World Geography, Honors World Geography, Personal Finance, Computer Applications, Bible History New Testament, German, Senior Project, Interactive Multimedia Presentations, Web Design Essentials, Sociology

Other IB Offerings -

11th IB- IB Computer Science 1 (SL or HL), IB Theory of Knowledge 1

12th IB- IB Computer Science 2 (SL or HL), IB Theory of Knowledge 2

Hamilton County School Graduation Requirements

(23 credits minimum for a traditional year-long schedule)

4 English

4 Math

4 Science

3 Social Studies

2 Foreign Language

1 Fine Art

1 Wellness

1/2 Personal Finance

1/2 PE (substituted for other requirement for IB Diploma Program students)

Elective Concentration or IB courses

Completion of Senior Project or IB Community Action Service requirements

Additional IB Requirements for Signal Mountain students include participation in Foreign Language, fine art and technology in 6th—10th grade and the completion of a Personal Project in the 10th grade.

High School Athletics & Club Offerings

Athletics— Baseball, Basketball, Bowling, Cheerleading, Cross Country, Football, Golf, Soccer, Softball, Tennis, Track & Field, Volleyball, Wrestling

Clubs— Chess, Climbing, Eagle Strong (School Climate), Fellowship of Christian Athletes, Film & Photography, Future Teachers of America, German American Partnership, Gay Straight Alliance, Lacrosse, Leo Club, Literary Magazine, Math League, Mock Trial, Model UN, Navy Sea Cadets, Robotics, Science Quiz Bowl, Student Council, Swimming, Youth in Government

Honor Clubs— Beta Club, Beta Club, Mu Alpha Theta (Mathematics), National Honor Society

SIGNAL MOUNTAIN MIDDLE HIGH SCHOOL

College Matriculation: Class of 2010—2014

College Matriculation Class of 2014	
	%
College	96
Military & Other	4

College Type Class of 2014	
	%
4-year	84
2 year	16

College Location/ Type	
	%
4-year in -state	61
4 year out-of-state	23
2 year in & out of state	16

College Reps: For College Visit information please contact Sandy Mitchum at Mitchum_S@hcde.org
Directions to School-12 miles/20 minutes from downtown Chattanooga. We are able to host College reps most Wednesdays and Fridays at 9:00 a.m.

DIRECTIONS

- From Chattanooga take 27N to Signal Mtn Road
- US 127 N/Signal Mtn Road up mountain
- Left on SM Blvd near CVS before stoplight
- Continue briefly on Maryland/James Blvd
- Left on Timberlinks Drive before SM Golf Club
- Continue on Timberlinks/Shackleford Ridge Road — miles
- Left at Nolan Elementary on Sam Powell. Proceed briefly on Sam Powell to SMMHS.

American University	1	Oxford College at Emory University	2
Asbury University	1	Palm Beach Atlantic University	1
Auburn University	11	Paracelsus Medical University Salzburg	1
Bennington College	1	Piedmont College	1
Berry College	4	Queens University of Charlotte	1
Bethel University-TN	2	Randolph College	1
Birmingham-Southern College	1	Rhodes College	1
Brigham Young University	1	Samford University	11
Brigham Young University, Idaho	4	Savannah College of Art and Design	2
Carnegie Mellon University	1	Sewanee: The University of the South	2
Carson-Newman University	5	Southern Methodist University	2
Chattanooga State Tech. Comm. College	89	Southern Union State Community College	1
Clemson University	1	Technische Universität Dresden	1
College of DuPage	1	Tennessee Technological University	25
College of the Sequoias	1	Tennessee Temple University	1
Dickinson College	1	Tennessee Wesleyan College	3
Earlham College	1	Texas Christian University	1
East Tennessee State University	24	The Art Institute of Tennessee - Nashville	1
Eastern Kentucky University	1	The Culinary Institute of America	1
Eckerd College	1	The George Washington University	1
Edge Hill University	1	The University of Alabama	11
Elmhurst College	1	The University of Georgia	1
Elon University	1	The University of North Carolina at Chapel Hill	1
Emory University	1	The University of Tampa	1
Flagler College	2	The University of Texas, Austin	2
Florida State University	1	The University of the Arts	1
Full Sail University	1	Tulane University	1
Furman University	3	Tusculum College	5
Gardner-Webb University	1	United States Naval Academy	1
Georgia Institute of Technology	3	University of Dayton	1
Georgia State University	1	University of Illinois at Urbana-Champaign	1
Harding University	3	University of Kentucky	1
King College	2	University of Mississippi	4
Lee University	5	University of New Hampshire	1
Lipscomb University	2	University of North Alabama	1
Louisiana State University	2	University of Notre Dame	1
Maryville College	3	University of Rochester	1
McGill University	1	University of South Carolina	4
Michigan State University	1	University of Tennessee, Chattanooga	142
Middle Tennessee State University	13	University of Tennessee, Knoxville	105
Mississippi State University	3	University of the Cumberland	1
Missouri Valley College	1	Vanderbilt University	3
Montana State University, Bozeman	1	Virginia Polytechnic Institute & State University	2
New York University	3	Wake Forest University	2
Northern Arizona University	1	Western Kentucky University	1
Oklahoma City University	1	Wheaton College IL	1
		Winthrop University	1