

RAFTING OPERATIONS ORDER BRIEF 15 APR 16

OPERATION SOGGY ROPE

1. Situation

a) Enemy Forces

High - 75

Low - 44

Windspeed - 5MPH

Wind Dir. - ENE

Moonrise - 1527

Moonset - 0407

Moonphase – Ovr Horizon

% Illum. - 78%

Sunrise - 0705

Sunset - 2013

BMNT - 0608

EENT - 2110

(1) Situation (enemy, weather, and terrain).

The Enemy Forces consist of laziness, complacency, shenanigans, tomfoolery, and apathy. The enemy is led by Mr Murphy. Henceforth, all enemy will be referred to as “Murphy”. The terrain effects how Murphy presents himself, the unfamiliar conditions on and around the river can hide or mask the presence of Murphy. Murphy is an all weather enemy and poor weather conditions significantly increase the likelihood that Murphy will strike. All leaders will maintain a watch for deteriorating conditions and notify the Chain of Command immediately.

(1) Capabilities.

Murphy is present everywhere and all the time. He is at home, school, church, on the mountain, and especially at the river. The combination of any or all of the aforementioned enemy characteristics and effects can cause severe injuries, loss of life, damage to equipment, or the loss of some serious fun.

(1) Probable Course of Action.

We can expect Murphy to attempt to insert himself in every aspect of the mission.

a) Friendly Forces

The Friendly Forces consist of cadets of the Trojan Battalion, Army instructors, parents/family, Prospective Middle School Students, HCDE DAI, and rafting/rope guides. The Trojan Battalion is further defined as the Battalion Staff Forward (BN FWD) and Rear (BN Rear) elements, A Company minus cadets not participating [ACo (-)], B Company minus cadets not participating [BCo (-)], and C Company minus cadets not participating [BCo (-)].

(1) Mission of Next higher unit.

The DAI office is to facilitate transportation and meal requests through Cadet Command. They also receive and transmit to concerned parties the DA 2977 Risk Assessment Worksheet.

(1) Mission of adjacent units (left, right, front, rear).

- a. The Trojan BN Army Instructors teach, train, advise, supervise, and mentor all of the cadets of the Trojan Battalion. Specifically, adherence to all training, safety, regulatory guidance as it pertains to White Water Rafting (WWR), Ropes Course (RC), and having fun.

(1) Mission and location of supporting elements.

- a. Rafting parents and/or family members will act as chaperones and positive role models for the WWR/RC trip and to spend quality time with their cadet and the Trojan Battalion.
- b. The support element will supervise the transport, setup, distribution, and clean-up of the meals for the WWR/RC mission.
- c. The rafting guides will pilot the rafts while on the water and provide training on specific procedures, equipment, and safety while afloat
- d. The rope guides will provide training on specific procedures, equipment, and safety for friendly personnel to negotiate the RC without injury.

(1) Attachments and Detachments.

a. Attachments

Two drivers with Buses from Sneed Transportation

a. Detachments

Trojan Battalion cadets not participating

1. Mission: Who, What, When, Why and Where (coordinates).

Trojan BN rafting Cadets, Instructors, Support elements, and Attachments will conduct a safe and fun White Water Rafting and Ropes Course on the Ocoee River and Outdoor Adventure Rafting beginning 160545APR2016 in order to practice team building, leadership, and have fun while in an adventure setting.

1. Execution.

a) Concept of Operation.

(1) Scheme of maneuver.

(2) Formation.

(3) Route.

(4) Tactical Missions to subordinate Units.

b) Subunit Subparagraphs.

c) Coordinating Instructions.



Time	Event	Location	Who	Leader	worn	Carried	Comments
0545	All Cadets Arrive	Lot E	all	King/PL	W	E1	all cadets need to have there wet weather clothes on and towel and water and any emergency allergy equip[ment
0550	Acountability Formation in lot E	Lot E	all	Co LDRs	W	E1	during this time cadets will be sorted into thjere boat groups and all p[aperwork and equipment will be checked by there squad leader
0600	Build Chaulks	Lot E	all	King/CLs			Chalk Leaders (CLs) will get count and names of participants in their chalk
0615	All cadets will board the bus	Lot E	all	King/CLs	W	E1	cadets need to take all equipments with them
0620	Departure from school	Lot E	all		W	E1	Head count and confirmation before departure





Soddy-Daisy

SDHS

Hamilton

Bradley

Cleveland

OE

OAR

Ocoee

Wildwood Lake

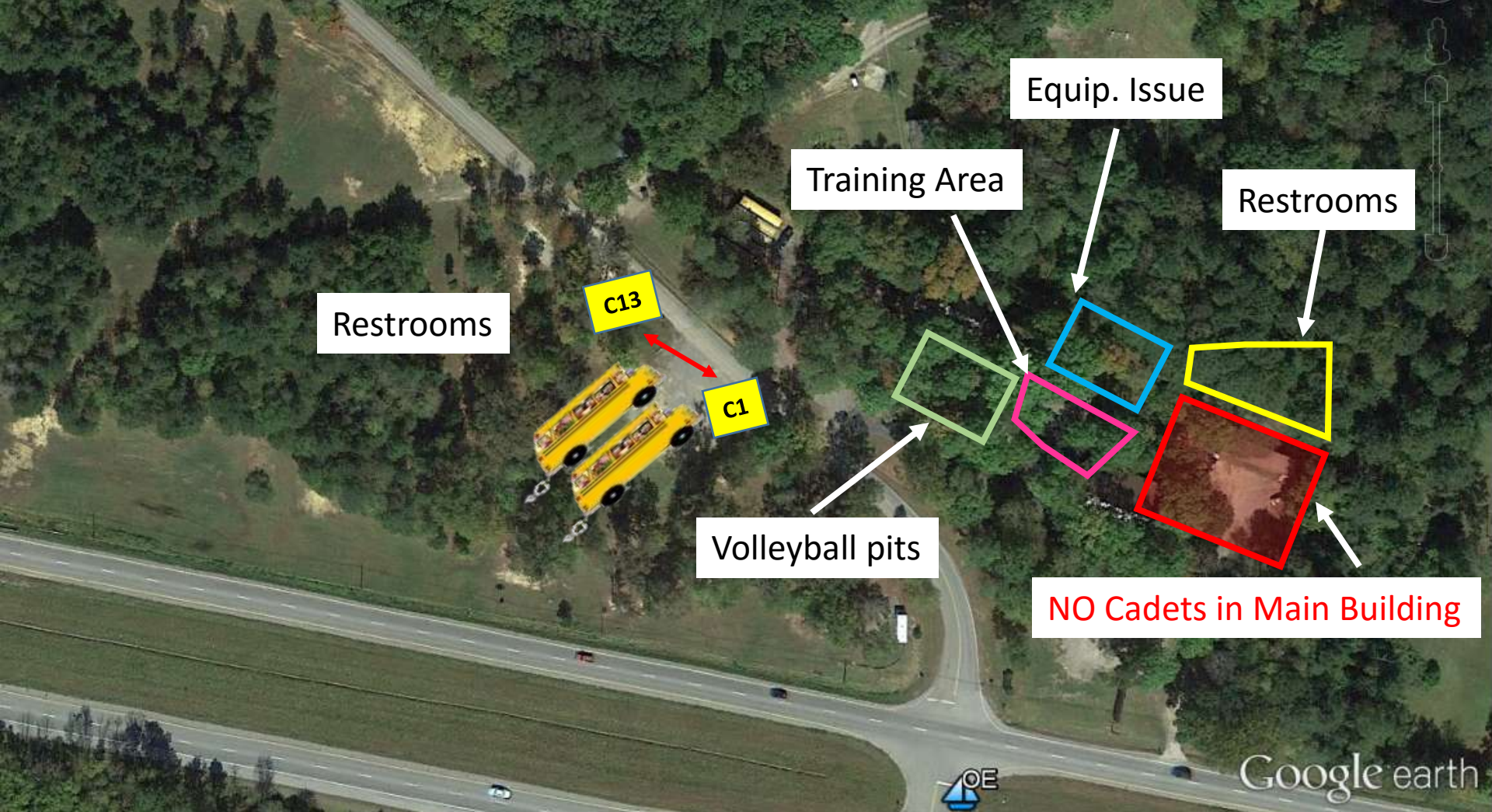
Ooltewah

Vanoy

East Ridge



0730	Arrive at outland expeditions	OE	all	King/CLs	W	E1	Formation in Chaulk order
0740	Check-In	OE	Chief	Chief	W	E1	
0800	Chaulks will be getting on the river by 0800	OE	Chaulks	OE Guides/CLs	W	E3	



Restrooms

C13

C1

Training Area

Equip. Issue

Restrooms

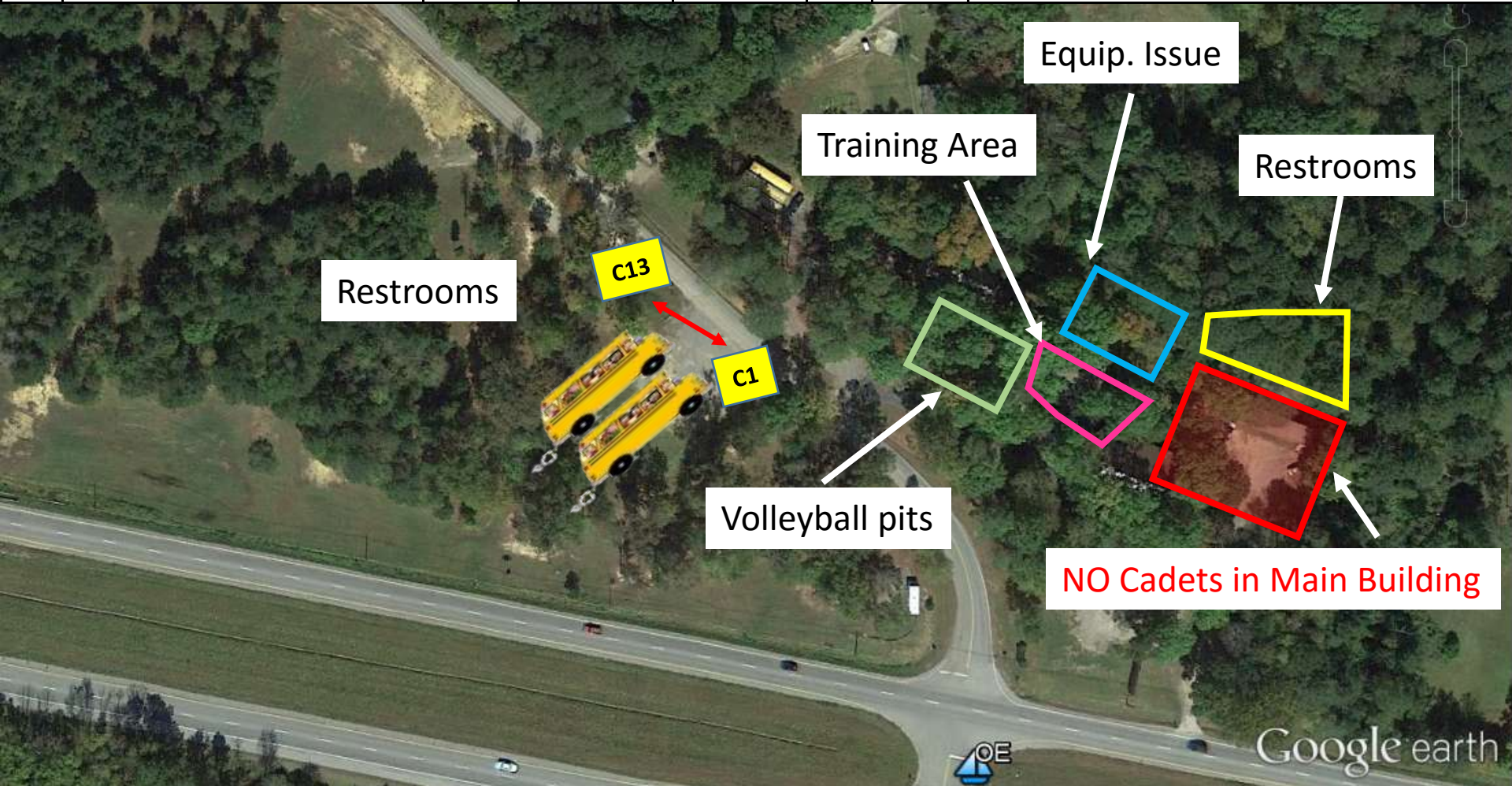
Volleyball pits

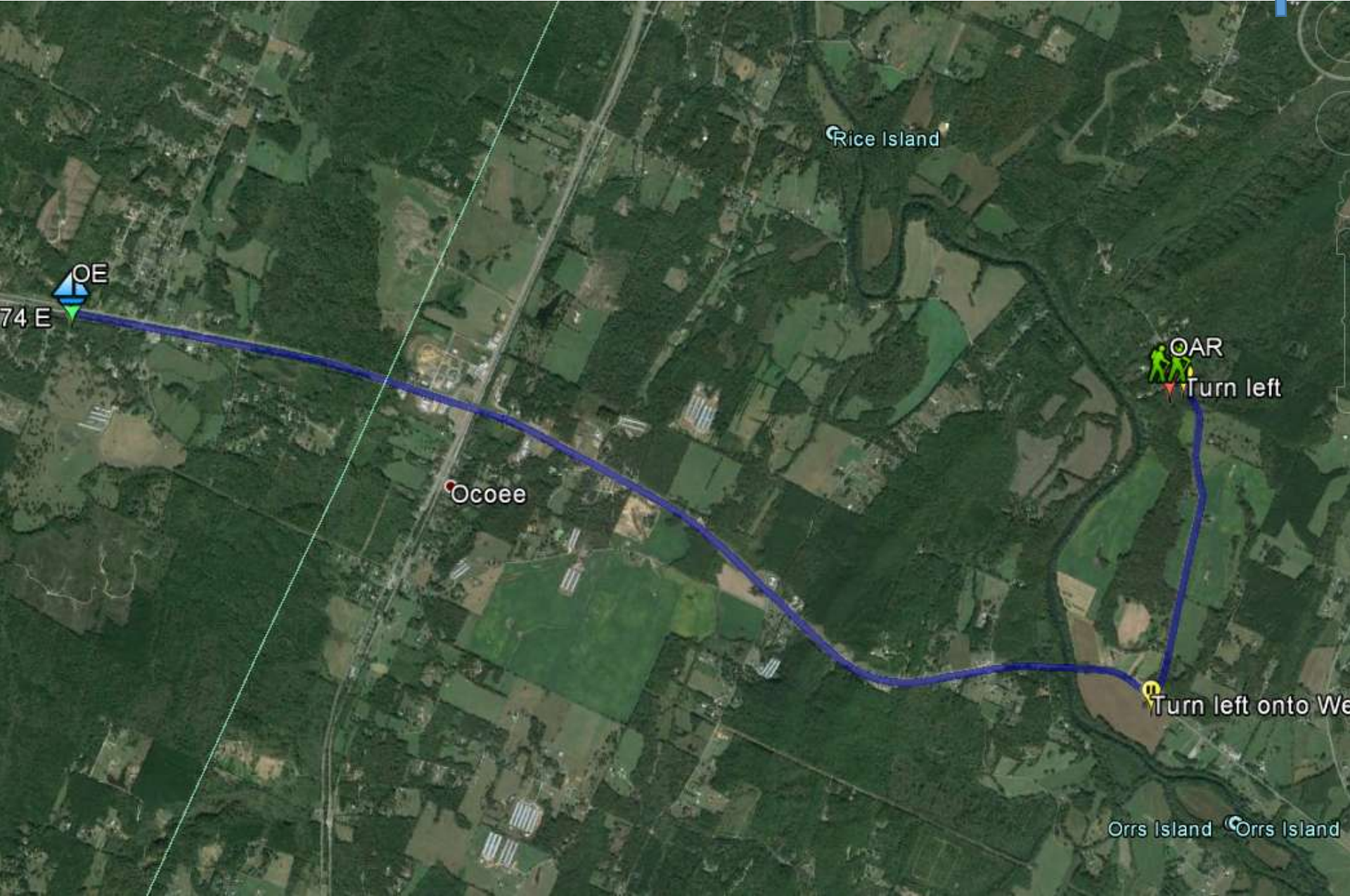
NO Cadets in Main Building





1215	All groups will be off the river and in a formation	OE	all	King/CLs	PT	E3	Formation in Chaulk order
1245	Everyone will be changed by 1245 and meet by the busses	OE	all	King/CLs	PT	E1	Control flow of people to restroom. Remain in Chaulks
1255	Load busses	OE	all	MAJ/King	PT	E2	Head count and confirmation before departure
1300	We will leave outland at 1300	OE	all	MAJ/King	PT	E2	





74 E
OE

Rice Island

Ocoee

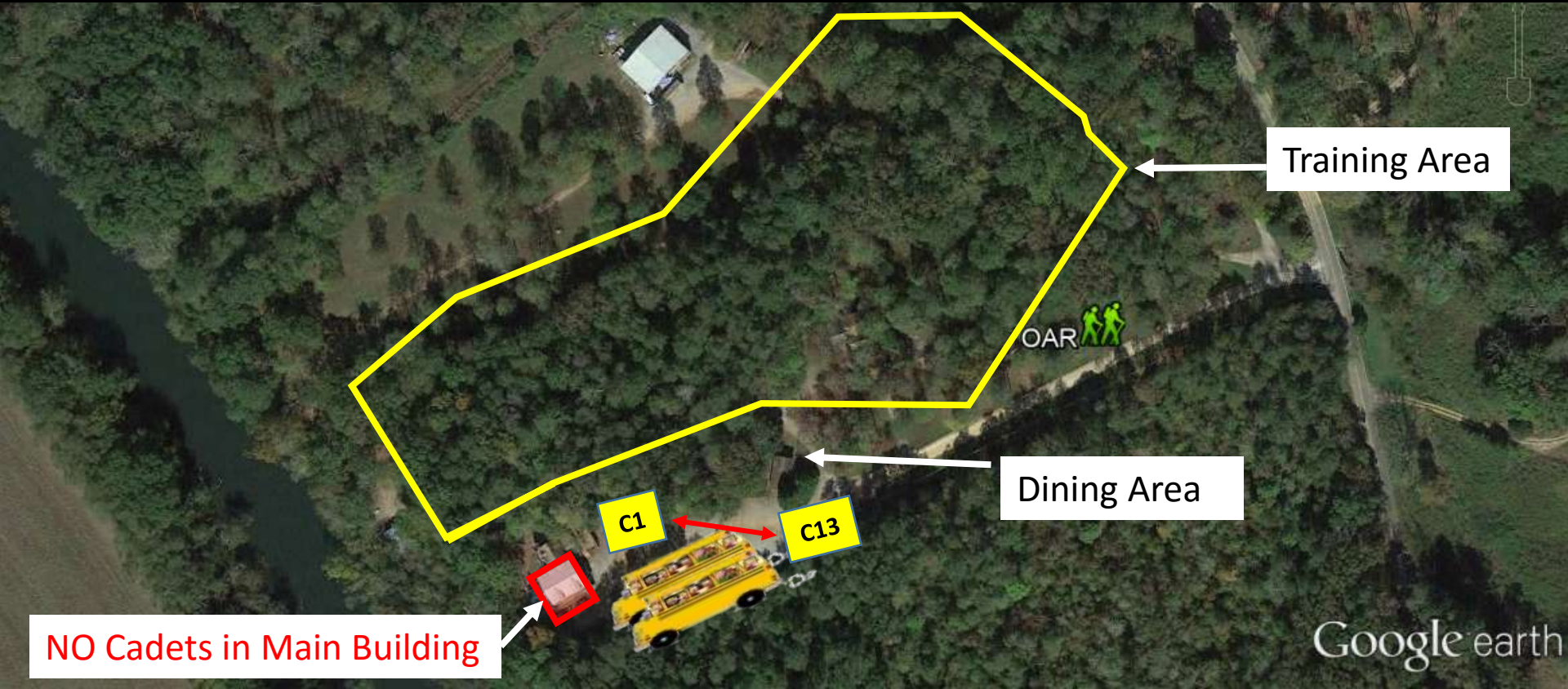
OAR
Turn left

Turn left onto We

Orrs Island Orrs Island



1320	Arrive at OAR	OAR	all	MAJ/King	PT	E2	Off load busses. formation in Chalk order
1330	Brief by Chief	OAR	all	Chief	PT	E2	
1430	Chow complete	OAR	all	Chief/King	PT	E2	
1445	Brief by OAR guides	OAR	all	OAR Guides	PT	E2	Be safe, have fun, stay in buddy teams
1825	Snack formation	OAR	all	King/CLs	PT	E2	accountability
1845	snack time	OAR	all	King/CLs	PT	E2	
1900	snack complete	OAR	all	King/CLs	PT	E2	clean all trash, account for persons and property. Identify clean-up crew for operations close-out at school
1910	Load busses	OAR	all	King/CLs	PT	E2	
1915	Departure From oar to the school	OAR	all	Chief/King	PT	E2	



Time	Event	Location	Who	Leader	worn	Carried	Comments
0545	All Cadets Arrive	Lot E	all	King/PL	W	E1	all cadets need to have there wet weather clothes on and towel and water and any emergency allergy equip[ment
0550	Accountability Formation in lot E	Lot E	all	Co LDRs	W	E1	during this time cadets will be sorted into thjere boat groups and all p[aperwork and equipment will be checked by there squad leader
0600	Build Chaulks	Lot E	all	King/CLs			Chaulk Leaders (CLs) will get count and names of participants in their chaulk
0615	All cadets will board the bus	Lot E	all	King/CLs	W	E1	cadets need to take all equipments with them
0620	Departure from school	Lot E	all		W	E1	Head count and confirmation before departure
0730	Arrive at outland expeditions	OE	all	King/CLs	W	E1	Formation in Chaulk order
0740	Check-In	OE	Chief	Chief	W	E1	
0800	Chaulks will be getting on the river by 0800	OE	Chaulks	OE Guides/CLs	W	E3	
1215	All groups will be off the river and in a formation	OE	all	King/CLs	PT	E3	Formation in Chaulk order
1245	Everyone will be changed by 1245 and meet by the busses	OE	all	King/CLs	PT	E1	Control flow of people to restroom. Remain in Chaulks
1255	Load busses	OE	all	MAJ/King	PT	E2	Head count and confirmation before departure
1300	We will leave outland at 1300	OE	all	MAJ/King	PT	E2	
1320	Arive at OAR	OAR	all	MAJ/King	PT	E2	Off load busses. formation in Chaulk order
1330	Brief by Chief	OAR	all	Chief	PT	E2	
1430	Chow complete	OAR	all	Chief/King	PT	E2	
1445	Brief by OAR guides	OAR	all	OAR Guides	PT	E2	Be safe, have fun, stay in buddy teams
1825	Snack formation	OAR	all	King/CLs	PT	E2	accountability
1845	snack time	OAR	all	King/CLs	PT	E2	
1900	snack complete	OAR	all	King/CLs	PT	E2	clean all trash, account for persons and property. Identify clean-up crew for opertions close-out at school
1910	Load busses	OAR	all	King/CLs	PT	E2	
1915	Departure From oar to the school	OAR	all	Chief/King	PT	E2	
2025	Arival at school	Lot E	all	MAJ/Chief	PT	E1	
2030	busses will be un loaded	Lot E	all	King/Co LDRs	PT	E1	
2040	Clean up crew will begin the clean up procss	Lot E		King/Clean Up Crew	PT	E2	estimated finish time will be 2130

Uniform Legend **W**- Non see through shirt, swimtrunks(girls wear athletic shorts) water shoes **PT**- Normal PT clothes

Equipment Legend **E1** - Pt clothes, Towel, Water bottle emergency allergy equipment, carry on bag **E2** - Water bottle emergency allergy equipment

E3 - Emergency allergy equipment

1. Service Support.

a) Supply.

(1) Rations.

- a. All participants will eat breakfast before arriving at SDHS Lot E. (Hydrate, Hydrate, Hydrate)
- b. Choo-Choo BBQ meal and snack bags. (Heater Meals for those that do not like BBQ)

b) Uniforms and Equipment.

- (1) Worn- Swimming Trunks/Suit One Piece, Non see-through t-shirt, water shoes/old pair of athletic shoes, sunscreen and any necessary allergy or asthma equipment. (Optional items: bug spray) Cadets will arrive dressed in their swimming clothing
- (2) Carried- carry on bag containing a water bottle, towel, and PT uniform (athletic shorts, t-shirt, a dry pair of undergarments, socks, and ATHLETIC SHOES (Don't use the same shoes as rafting)).

a)Transportation.

(1)Personal- Each participant is responsible for providing own transportation to SDHS

(2)Program- Two buses will provide transportation to and from all training activities.

b)Medical Evacuation.

(1)Minor Injuries – Treat on site. Evac by car if required

(2)Major Injuries – 911.

c)Personnel.

(1) See Roster

1. Command and Signal.

a)Signal.

(1)Frequencies and Call Signs.

a.

(2)Pyrotechnics and Signals.

a.

(3)Challenge and Password.

a.

(4)Code Words.

a.

a) Command.

(1) Chain of Command/Command Leader Location.

a. School

- i. CW3 Holovacko - Parking lot E**
- ii. MAJ Redlin- Parking lot E**
- iii.C/1LT King- Parking lot E**
- iv.C\LTC DesJarlais- Parking lot E**
- v. Co LDRs- Parking lot E**
- vi.Chaulk Leaders/Chaperones- Parking lot E**

b. OE

- i. CW3 Holovacko – Main Building**
- ii. MAJ Redlin – Training Area**
- iii.C/1LT King – Training Area**
- iv.C/LTC DesJarlais – Training Area**
- v. Chaulk Leaders/Chaperones– Training Area**
- vi.OE Guides– Training Area**

a) Command.

(1)Chain of Command/Command Leader Location. (CONT)

c. Water

- i. OE Guides – Each Boat**
- ii. MAJ Redlin 1st Boat**
- iii. Chaulk Leaders/Chaperones– Each Boat**
- iv. C/1LT King – Last Boat**

d. OAR

- i. CW3 Holovacko - Dining Area**
- ii. MAJ Redlin- Dining Area**
- iii. Buddy Team Leaders**

At my mark the time will be _____ Mark. Questions