

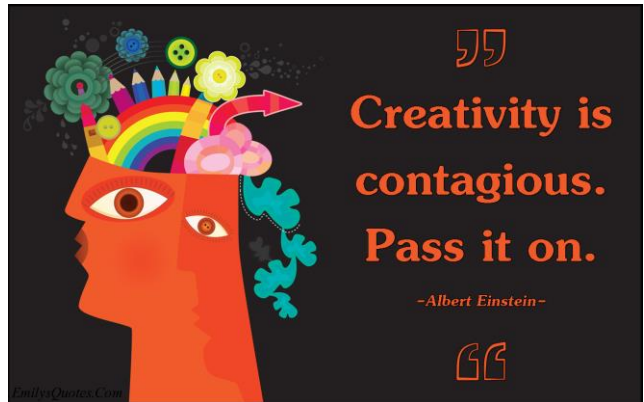
Washburn Elementary

December 2017

The character trait for December is

creativity!

In addition to creativity, students and staff at Washburn Elementary will also be working on flexibility, open-mindedness, and curiosity.



All School Activity: This month, students and staff are exploring the creative process through a problem solving exercise. See the steps listed below:

1. As a class, create a list of things you would like to see improved in the classroom or school. After the list has been completed, vote on one challenge to collaborate on as a team.
2. Brainstorm all possible solutions. Be open-minded when creating your list.
3. Discuss the different ideas and decide on the best one.
4. Create a plan to implement that solution.
5. Carry out the plan.

Bonus challenge: try out this exercise with a family member to improve something at home!



Check out the back of this newsletter for more information on November's character traits!

Did You Know?

One of the earliest models of the creative process is attributed to Graham Wallas who proposed that creative thinking proceeds through four phases:

1. Preparation: definition of issue, observation, and study
2. Incubation: laying the issue aside for a time
3. Illumination: the moment when a new idea finally emerges
4. Verification: checking it out

