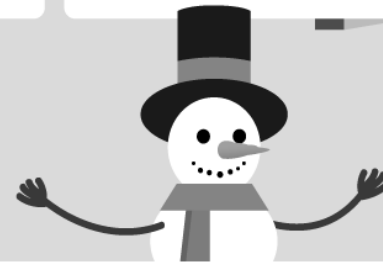


Monday	Tuesday	Wednesday	Thursday	Friday
<p>Choose 1 or 2: 3 Assorted Cereal Cocoa Cherry Nutrition Bar Oatmeal</p> <p>OR Choose 1: Yeast Ring</p>	<p>Choose 1 or 2: 4 Assorted Cereal Biscuit Sausage or Chicken Gravy Jelly</p>	<p>Choose 1 or 2: 5 Assorted Cereal Chocolate Muffin Yogurt or Parfait</p> <p>OR Choose 1: Bacon, Egg & Cheese Croissant</p>	<p>Choose 1 or 2: 6 Assorted Cereal Cinnamon Roll Cheese Stick</p> <p>OR Choose 1: Chocolate Crescent</p>	<p>Choose 1 or 2: 7 Assorted Cereal Biscuit Sausage or Chicken Gravy Jelly</p>
<p>Choose 1 or 2: 10 Assorted Cereal Cheese Stick Cheez-It's</p> <p>OR Choose 1: Dutch Waffle</p>	<p>Choose 1 or 2: 11 Assorted Cereal Egg Omelet Toast w/Jelly</p> <p>OR Choose 1: Frudel</p>	<p>Choose 1 or 2: 12 Assorted Cereal Biscuit Sausage or Chicken Gravy Jelly</p>	<p>Choose 1 or 2: 13 Assorted Cereal Yogurt Elf Grahams</p> <p>OR Choose 1: Breakfast Burrito</p>	<p>Choose 1 or 2: 14 Assorted Cereal Biscuit Sausage or Chicken Gravy Jelly</p>
<p>Manager's Choice 17</p>	<p>Manager's Choice 18</p>	<p>Abbreviated Day No Meals Served 19</p>	<p>No School 20</p>	<p>No School 21</p>
<p>No School 24</p>	<p>No School 25</p>	<p>No School 26</p>	<p>No School 27</p>	<p>No School 28</p>
<p>No School 31</p>	<p>Breakfast is available at no charge to all Franklin County School Students!</p>		<p>This institution is an equal opportunity provider</p>	



The Nutrition Department strives to offer the daily menu as planned and advertised. However, due to some circumstances beyond our control, the daily menus may be altered.

*Assorted Juice is offered daily. * A variety of milk is offered daily. * Each reimbursable breakfast must include a minimum of ½ cup fruit or juice.