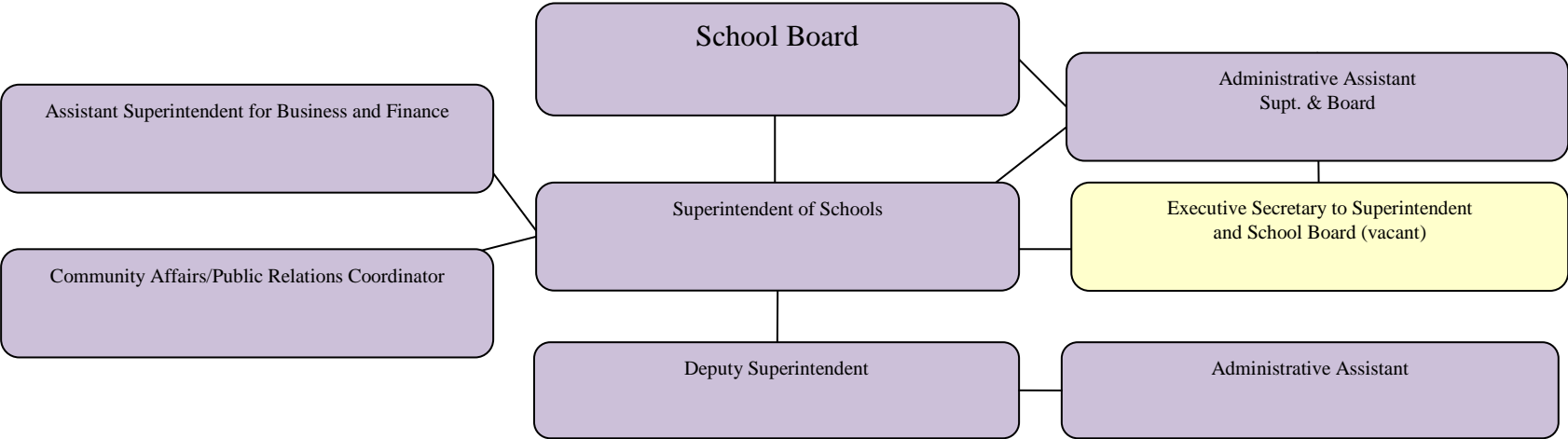
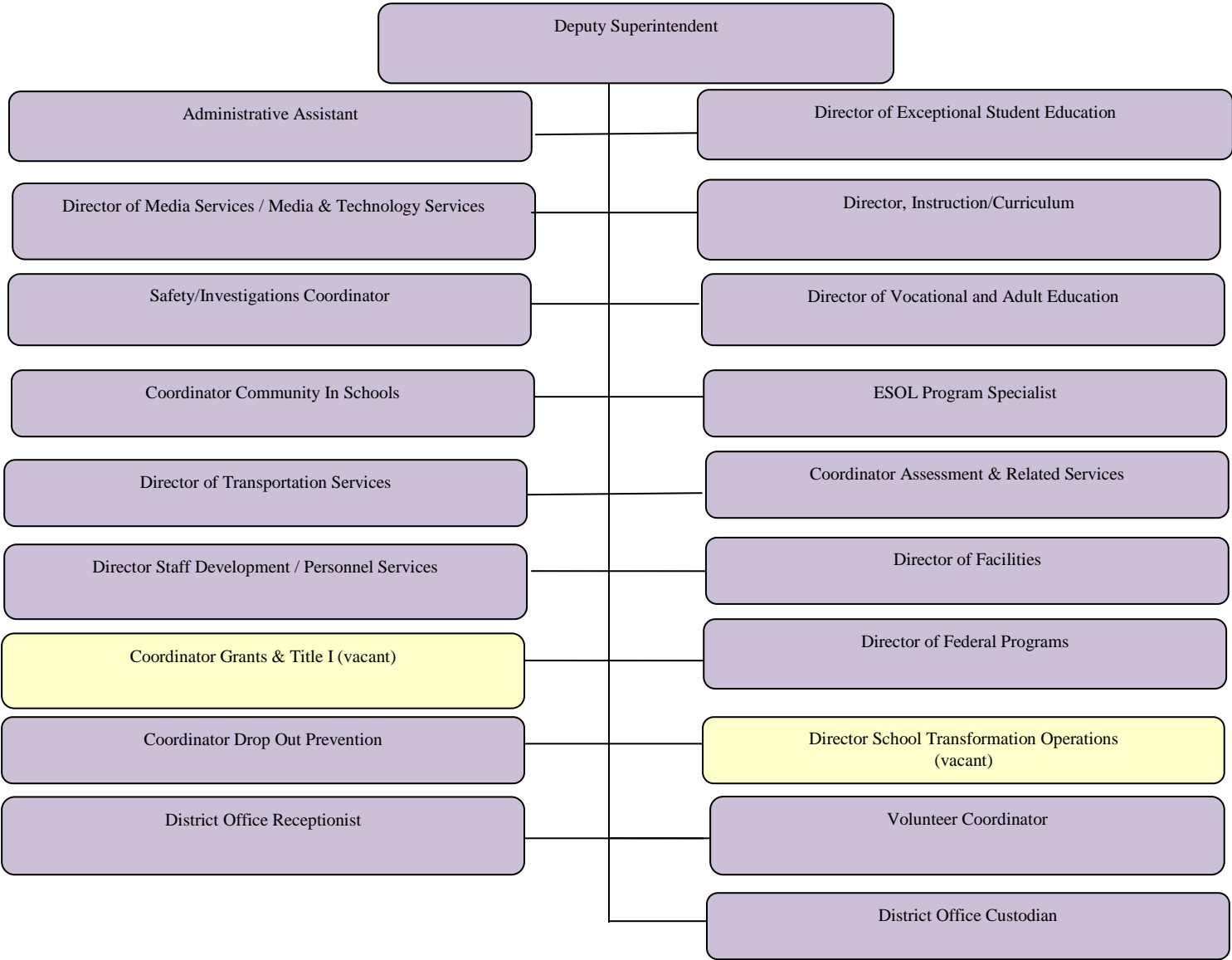


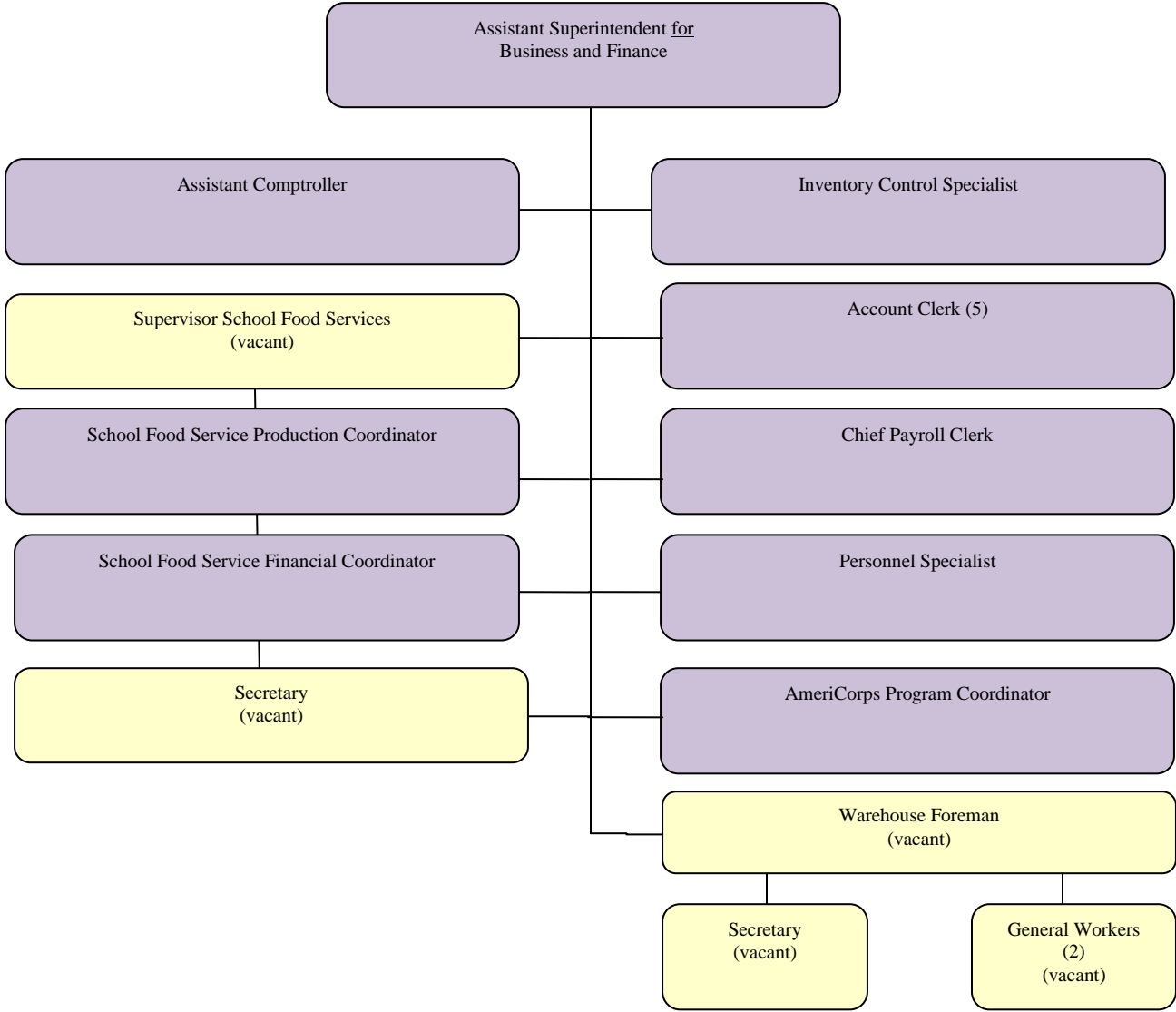
Gadsden County School Board Organizational Chart



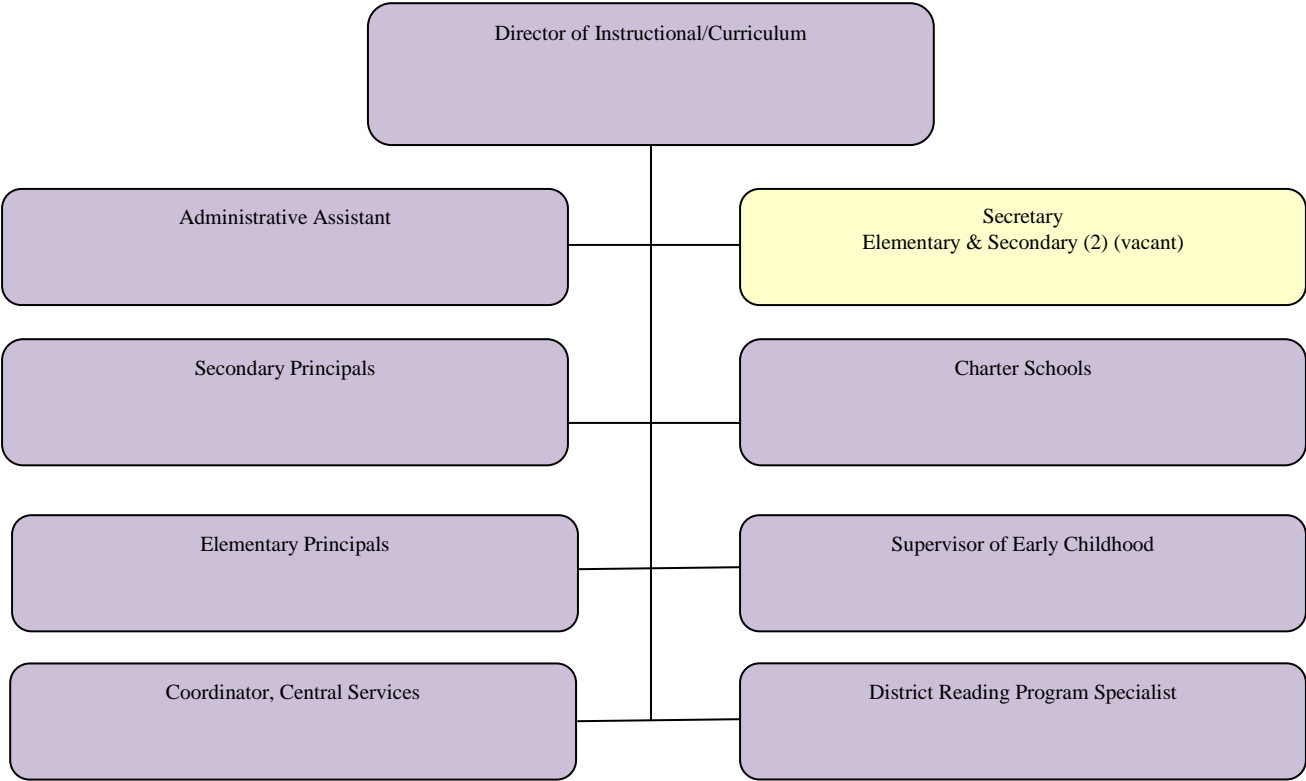
Central Support Services



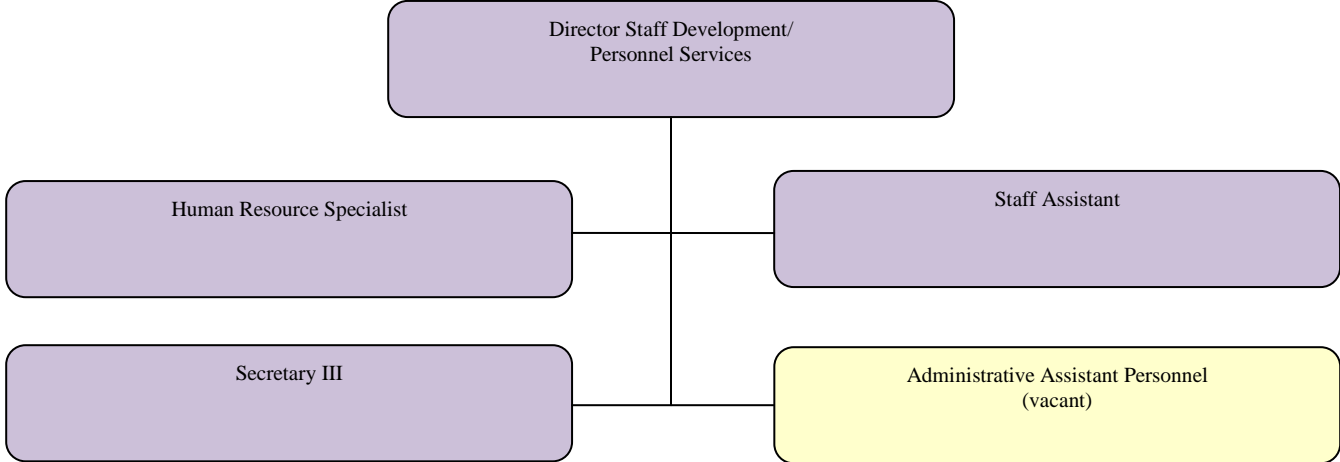
Business Services Department



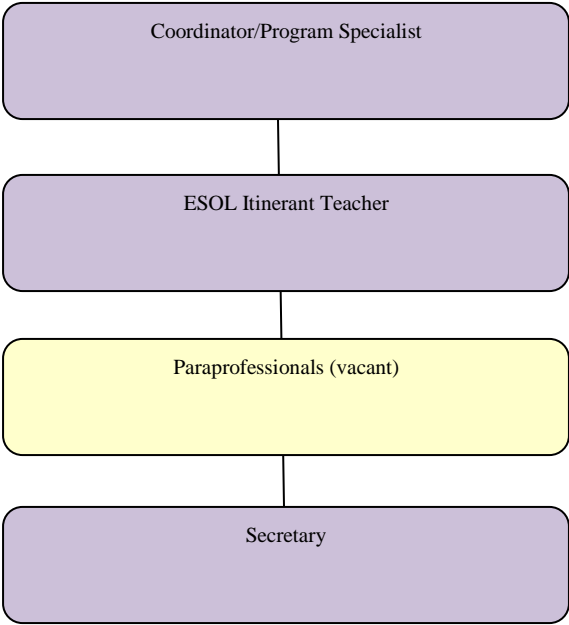
Instructional Services



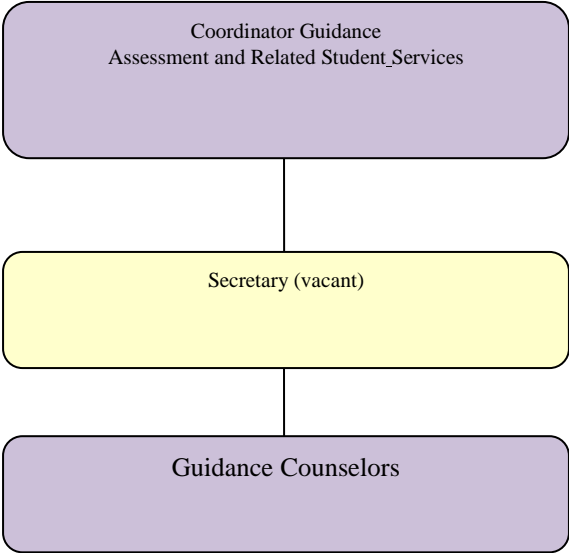
Human Resources Department



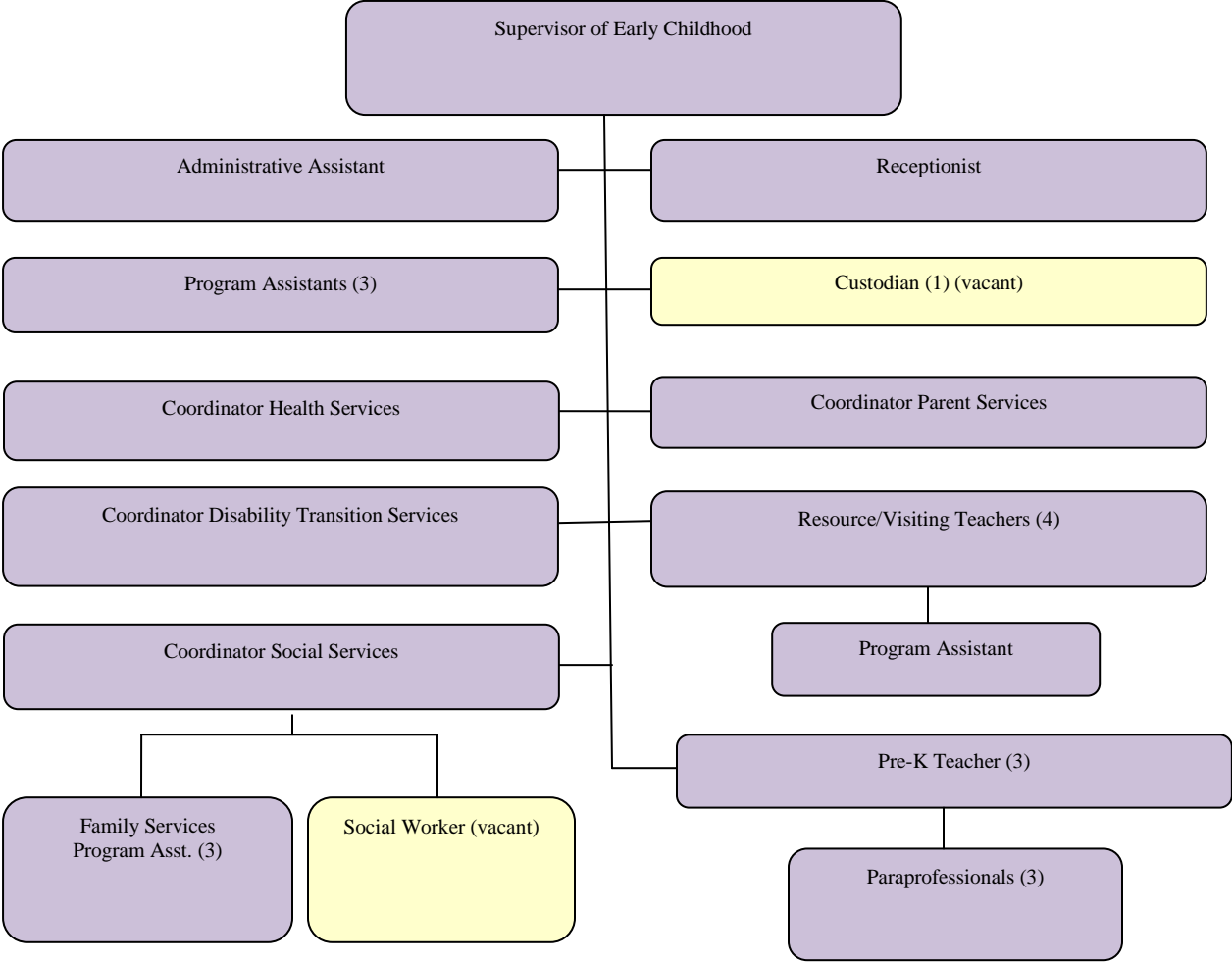
ESOL Program



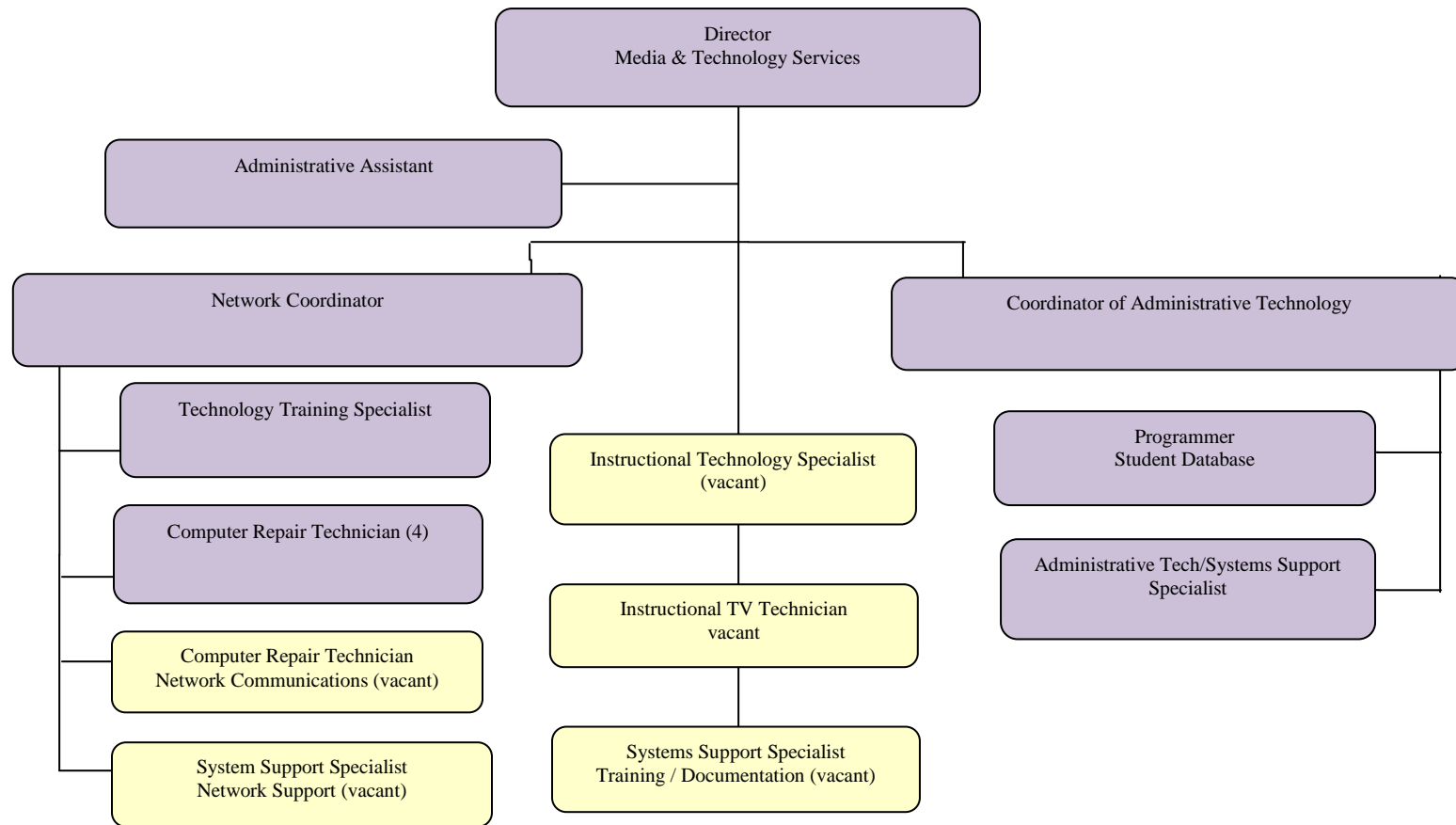
Assessment and Guidance Services



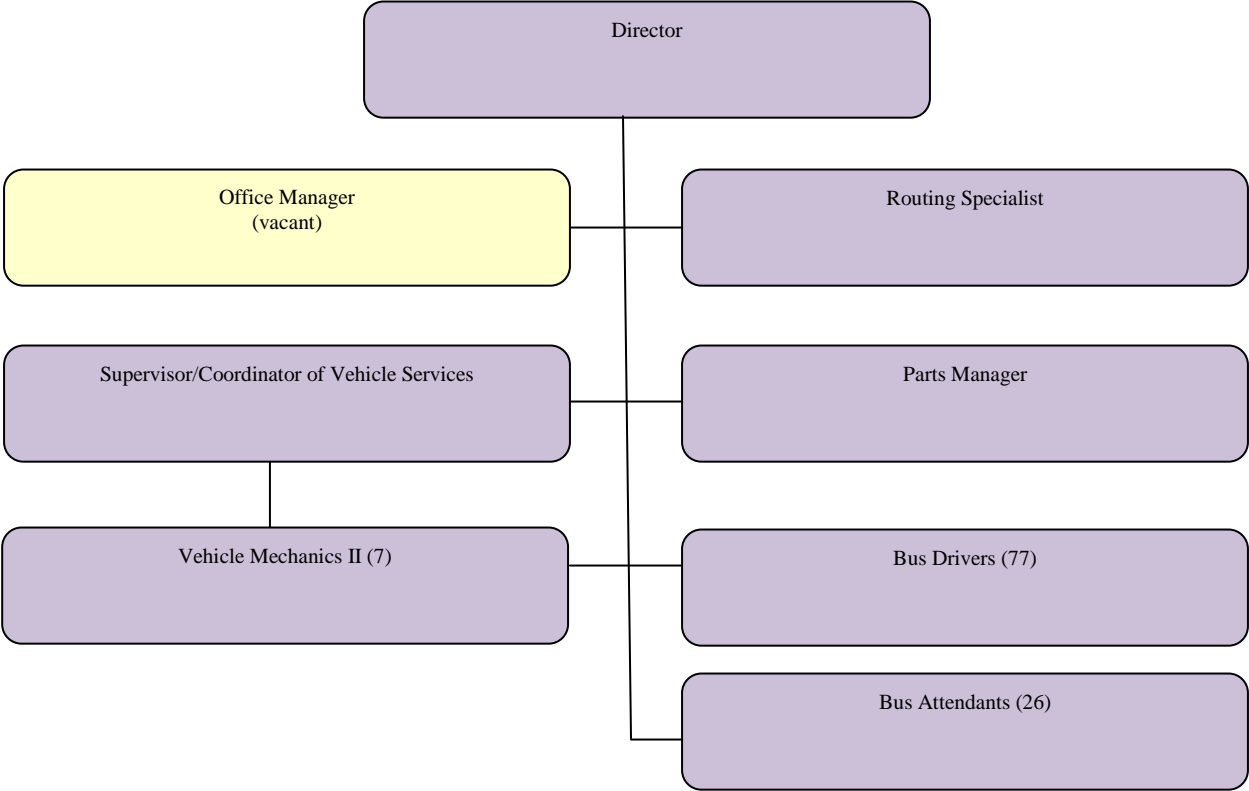
Pre-Kindergarten Services



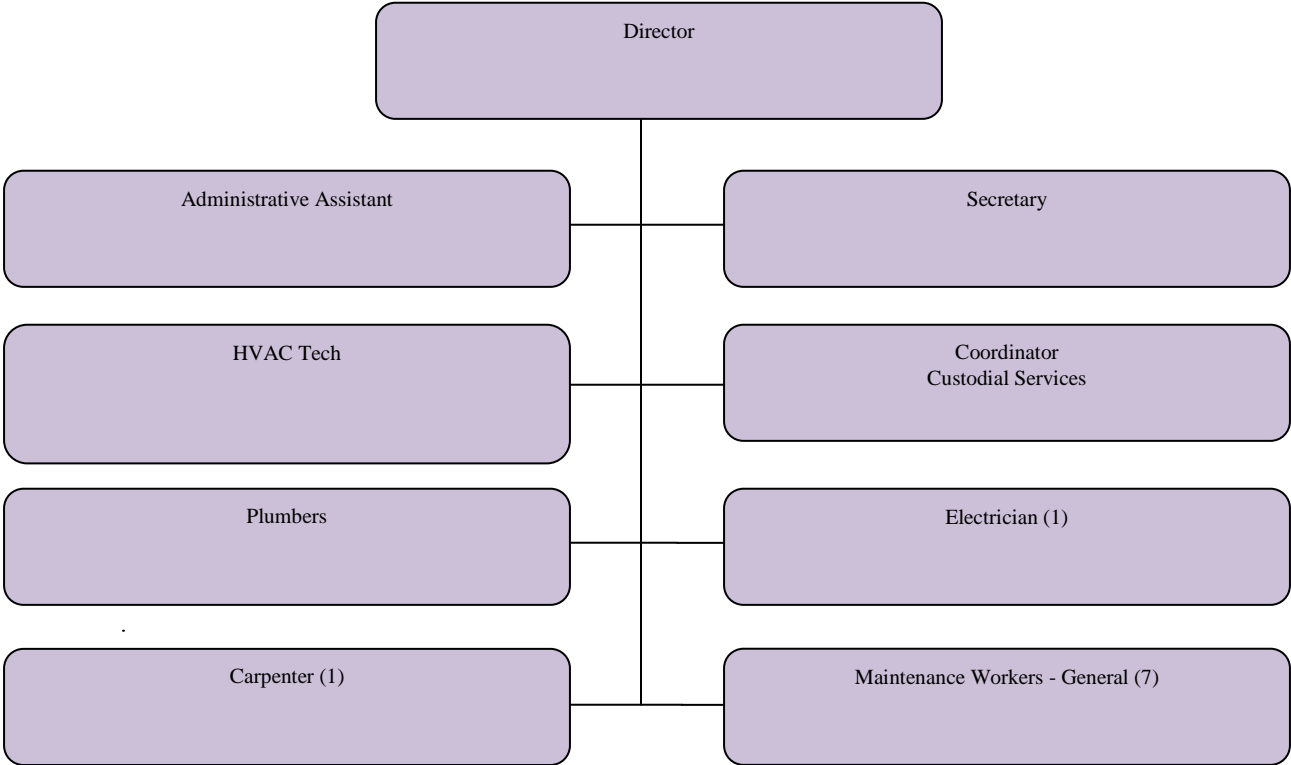
Instructional Materials and Media/Technology Services (Instructional Technology & Information Technology Services)



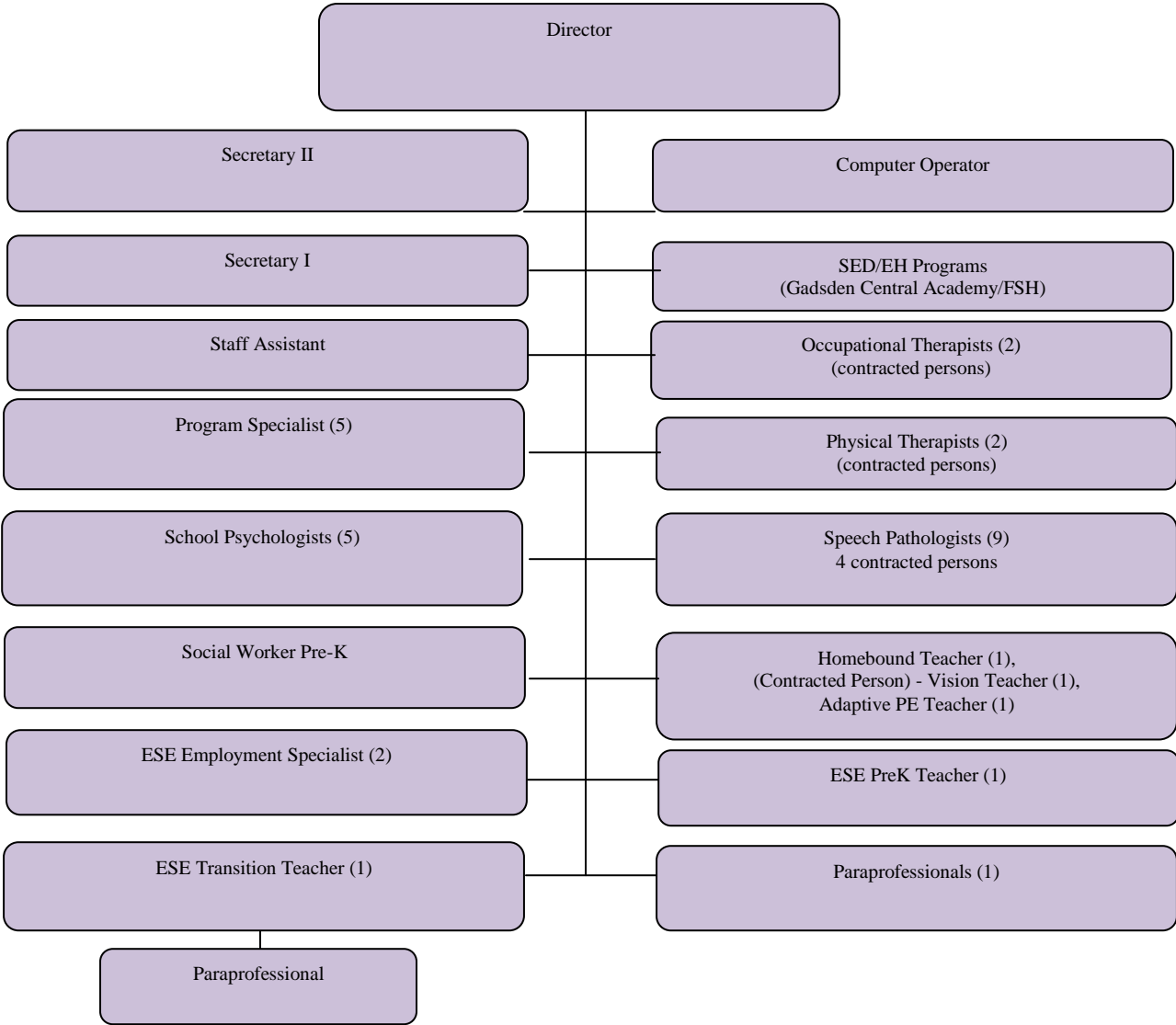
Transportation Director



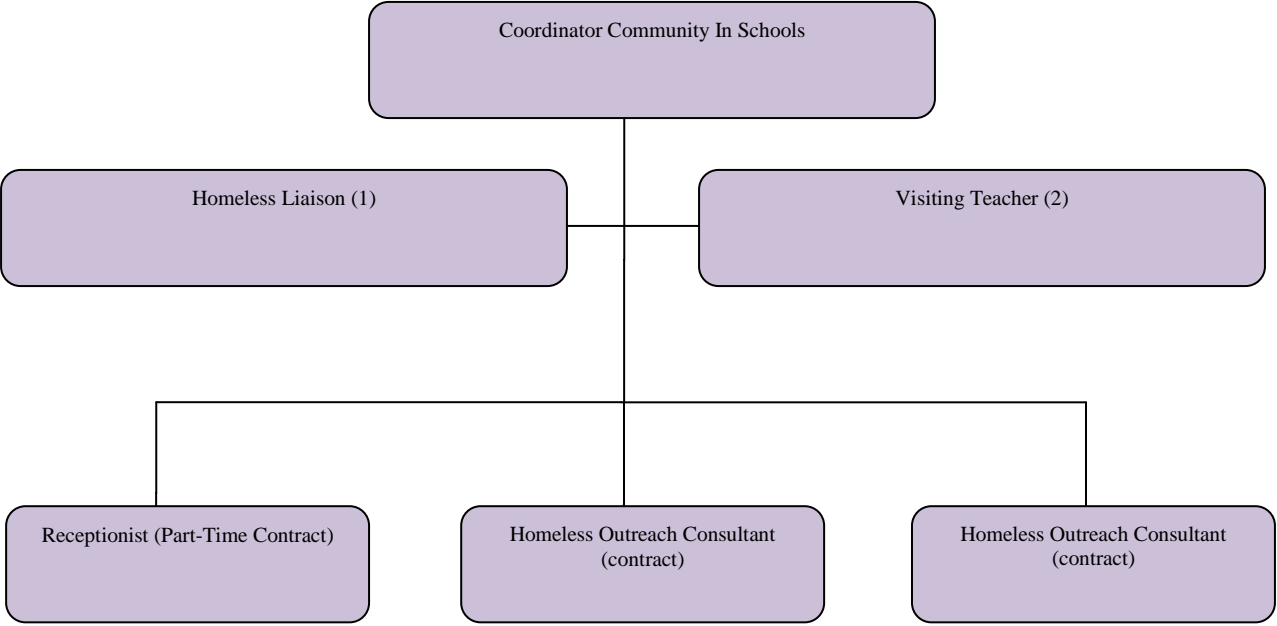
Facilities Department



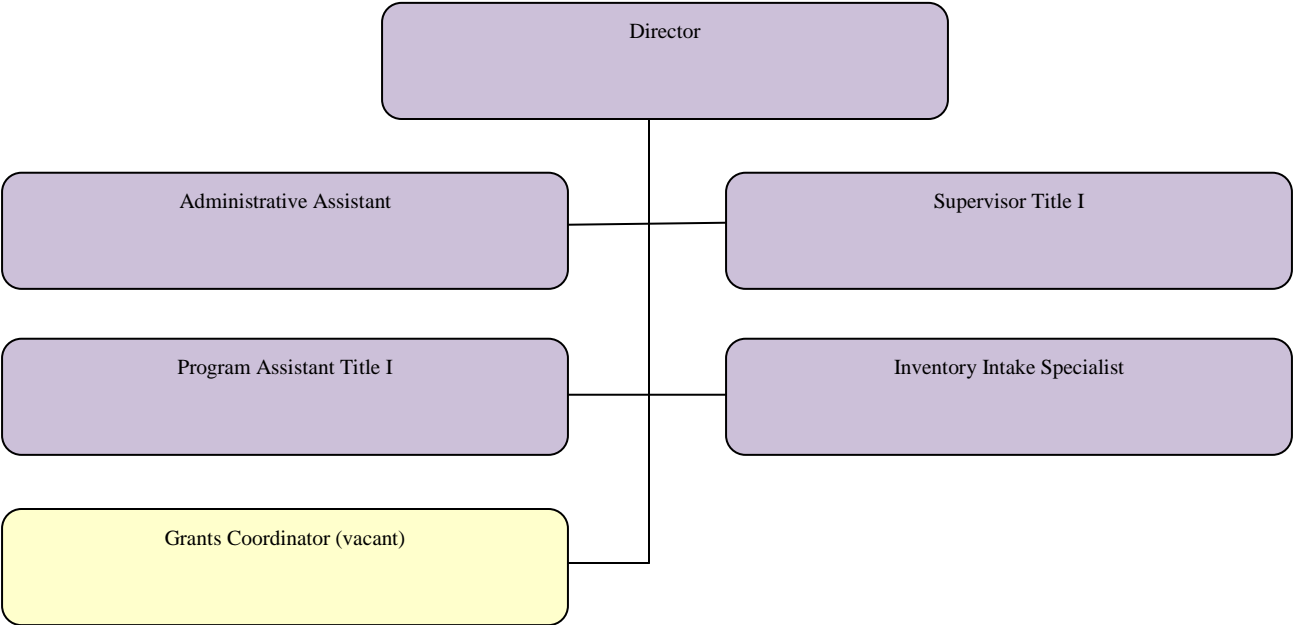
Exceptional Student Services Department



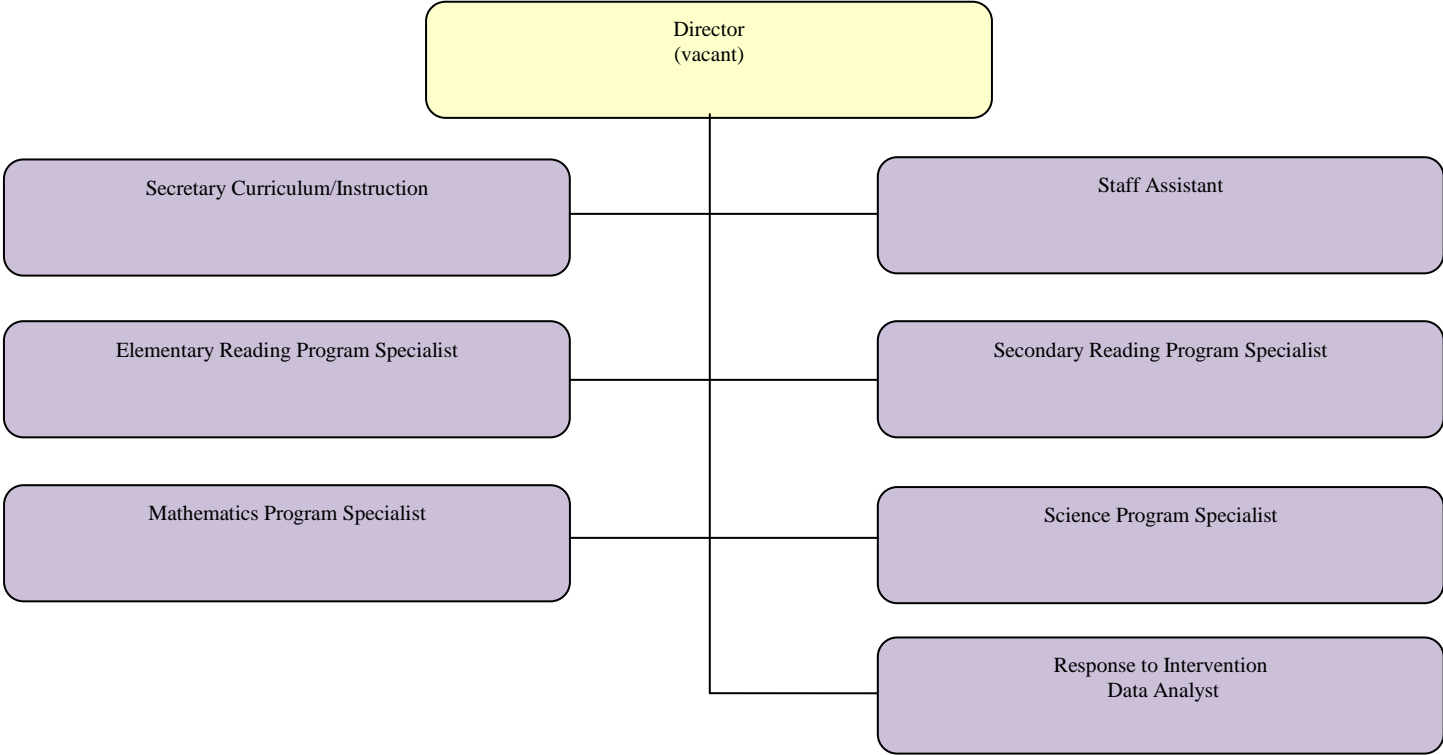
Parent and Community Services



Federal Programs

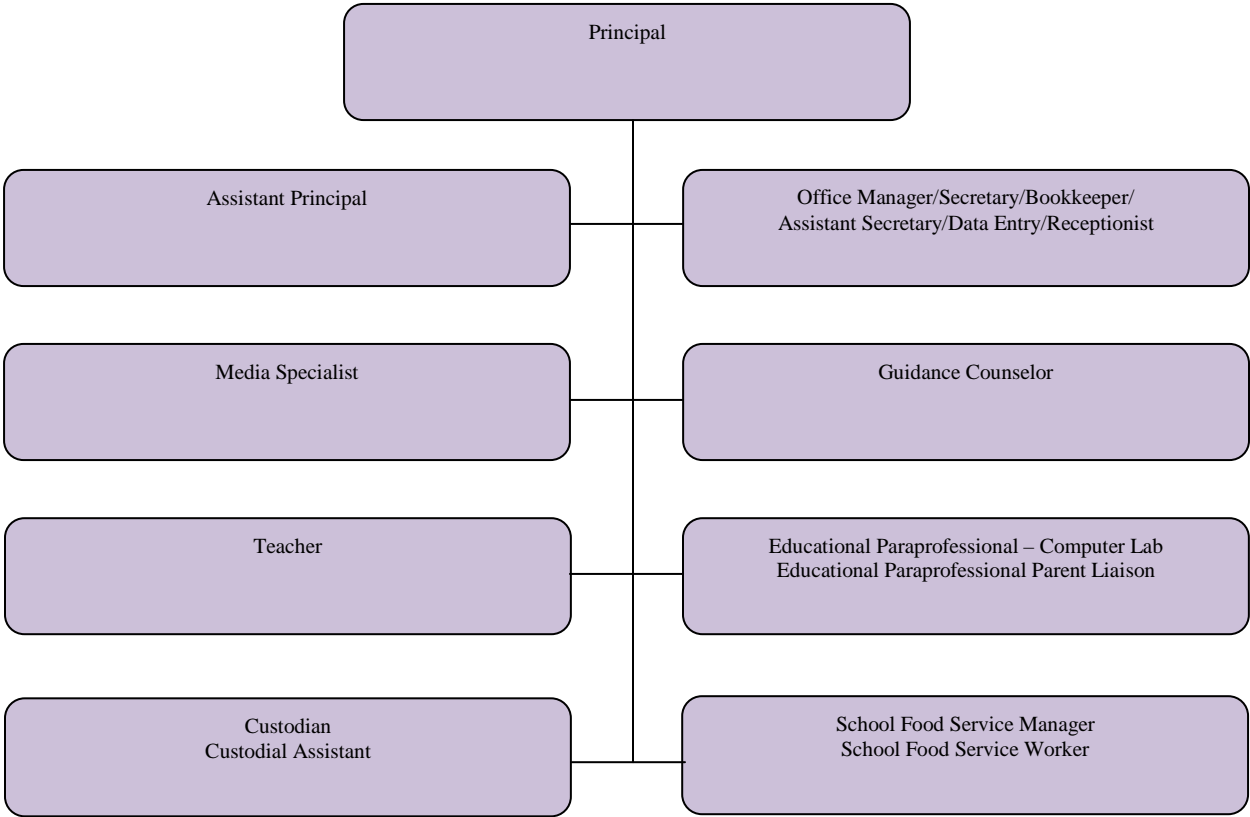


School Transformation Operations



School Level Organization

(Positions and numbers allocated will vary depending upon school level and enrollment)



AMERICORPS

Director

AmeriCorps Gadsden Read (34)