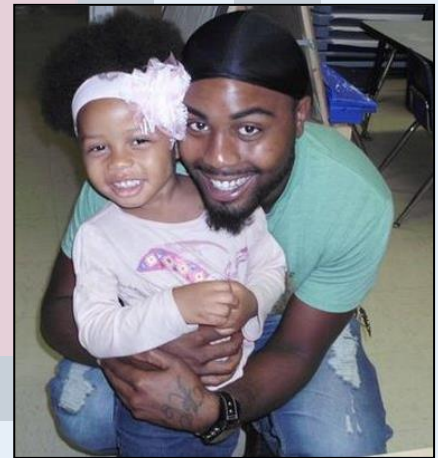




2014 Annual Report



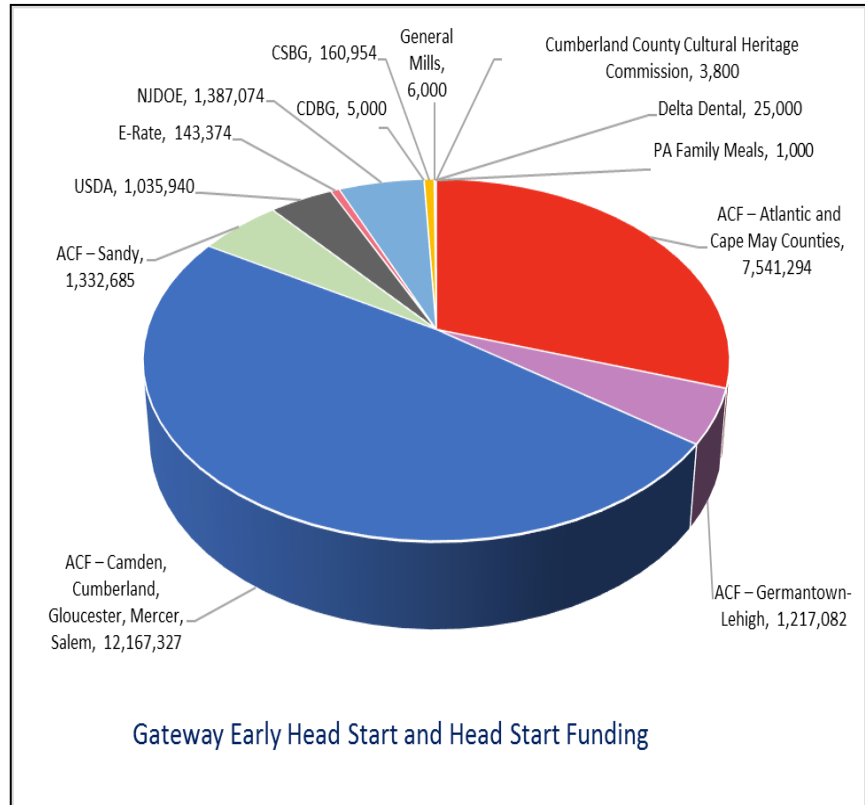
Gateway Early Head Start and Head Start



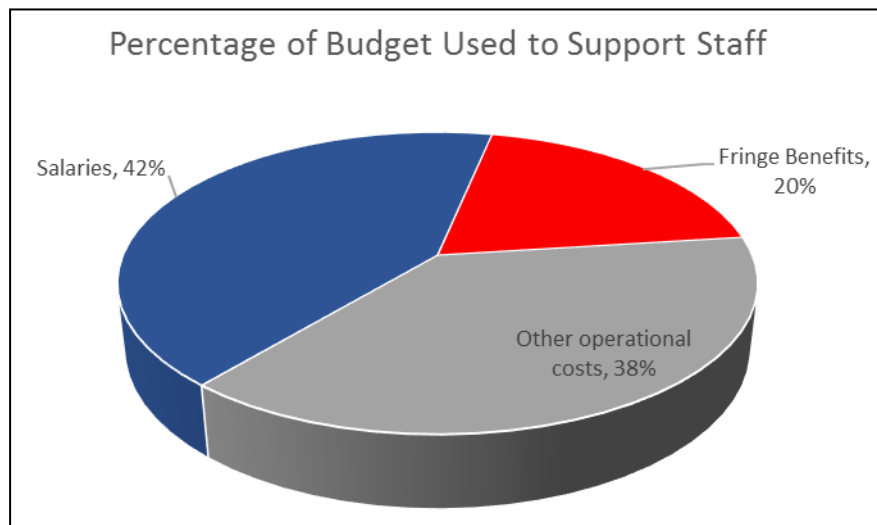
The mission of Gateway Early Head Start and Head Start is to provide quality early childhood, health, and family partnership programs that promote self-sufficiency and strengthens the family.

Budgetary expenditures and proposed budget

Gateway Early Head Start and Head Start is funded primarily through the Administration for Children and Families. In addition, Gateway works in collaboration with four school districts through which funding for state-funded preschool is received: Bridgeton, Millville, Pleasantville, and Vineland. Gateway has also received Community Development Block Grant funds as well as Community Services Block Grant (OCEAN, Inc.) funds to enhance programs in Gloucester, Cumberland (Vineland), Atlantic, and Cape May counties. Gateway also actively pursues grant opportunities to enhance program services. At the end of 2014, Gateway was notified that it would become an Awardee for the Early Head Start-Child Care Collaborations program, to begin in March 2015.



Gateway Early Head Start and Head Start supports staff efforts through salaries that are comparable to similar positions in the community: teaching staff, managing staff including specialists and directors, family advocates, and other support staff. The organizational structure is aligned with goals for Head Start's Early Learning Framework and Family Engagement, as well as being compliant with the Head Start Act and Head Start Performance Standards. Gateway collaborates with community services to recruit and retain high



performing staff, manage expenditures, and address community need for full-day services.

Gateway ensures that classrooms have educational materials to support implementation of the curriculum and child assessment, providing high quality school readiness services including, furnishings, art supplies, and other learning center materials. Gateway ensures classrooms are equipped with first aid kits, toothbrushes/toothpaste/gum-wipes, diapers and other medical and dental supplies ensuring safety and health and support children's overall development in the classroom. Gateway ensures that children with disabilities receive accommodations, including modified materials, promoting full participation in the classroom.



The Gateway Early Head Start funding also supports home-based services for families with children ages birth to three years old as well pregnant women. The families and pregnant women are supported through a well-developed curriculum and trained staff who provide home visits and group experiences, supporting the development of a healthy infant.

Gateway Head Start ensures transportation for 14 centers, 47 percent of its Gateway-operated centers, with bus services contracted for four of the centers. Of the ten child care collaboration centers, five of the centers provide transportation to children. Gateway also maintains a leased vehicle for traveling to the various sites and for attending meetings as well as several utility vehicles and vans. Gateway operates a fleet of buses, vans and trucks. Gateway transports children to/from Head Start, for dental appointments, and for field trips. Vans and trucks are used for food and other supply delivery. Maintenance uses the pick-up truck to hold equipment for maintaining the various sites



Gateway collaborates with child care providers in Atlantic and Cumberland Counties to provide extended day-extended year child care, serving more than 400 infants, toddlers and preschool age children.

Children receive two-thirds of their daily nutritional requirements. USDA funds pays for a majority of child meal-related expenses, with Head Start funds also used to maintain menus that are nutritious and reflect diversity

Gateway accesses consultants to provide services to children and to assist staff with projects. Gateway currently contracts with 3 certified mental health consultants and a speech therapist.

Gateway contracts with consultants to provide services to children with disabilities and assist with the Early Intervention Program and Child Study Teams through the development of memorandums of understanding.

Gateway actively seeks funding and avenues for accessing insurance to address dental/medical services. When other funding sources are not available, Gateway assists parents with dental-related costs (Delta Dental funding) for their HS children, along with dental education and promoting good oral health. Gateway assists with medical services, addressing lice and bedbugs, rashes, or more serious issues such as diabetes or seizures. Gateway purchases medications or pays doctor fees not covered by insurance.

Gateway Head Start provides opportunities for field trips, expanding the child’s world beyond the center and the home. Parents and other involved family members are encouraged to be a part of their child’s education.



Gateway promotes family engagement in the centers and in program governance. Policy Council works with centers to budget funds for parent-lead events such as male involvement activities, parent committee events and end-of-the-year family activities.

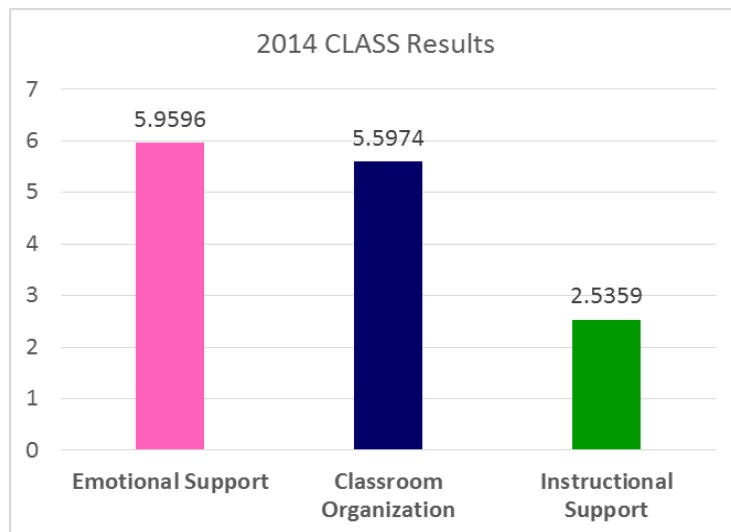
On a limited basis, Gateway Early Head Start accesses temp staff who has received 40 hours of early childhood training, have credentials, have completed background checks, and have submitted appropriate health documentation.

Gateway pays for college tuition and related expenses for staff and for parent training to become staff.

Gateway invests in professional development for its staff through conferences and in-services.

2014 Monitoring Review Results - CLASS

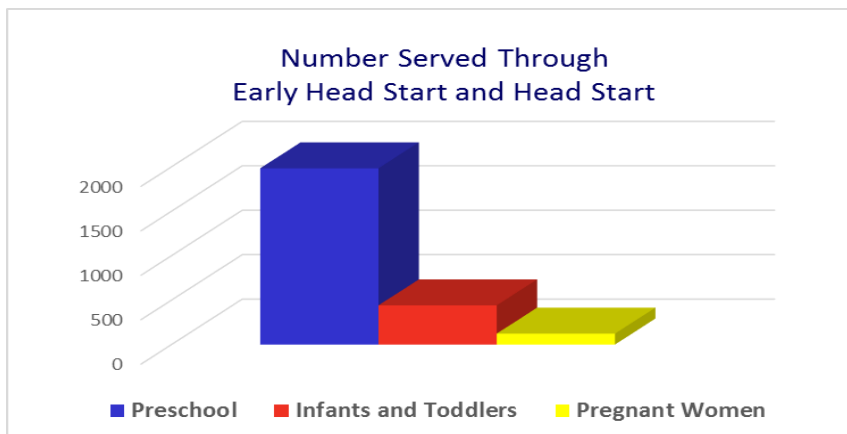
In November of 2014, Gateway Head Start participated in a CLASS Federal Monitoring review, with teaching staff throughout the program being observed.



Financial Audit

Gateway Community Action Partnership’s Annual Audit was deemed a low-risk auditee, and as a result, an unqualified opinion and no audit findings.

Total Number of Children and Families Served



Gateway Early Head Start and Head Start provides services through 30 centers and collaborates with ten child care centers. Gateway Head Start and Early Head Start maintained 100 percent funded enrollment in its operating centers for September through June. Gateway has continued to

struggle with enrollment in the Atlantic and Cape May areas due to a lack of available, qualified facilities. Of the more than 20,000 eligible Head Start and Early Head Start children living in

the Atlantic, Cape May, Mercer, Gloucester, Salem, Cumberland, Sicklerville, and Germantown-Lehigh area, only 9 percent were served through Gateway.

Percentage of Enrolled Children that Received Medical/Dental Exams

Gateway Early Head Start and Head Start programs ensure that children receive medical and



dental screenings, exams, treatment and education. Gateway has been working with Optimum Academy to ensure that children have vision screenings and receive eyeglasses.

Gateway worked with families to ensure children were up-to-date with early screening, prevention, and diagnosis. Of the children served by Gateway Early Head Start and Head Start 55 percent of Head Start children were up-to-date with early screening, prevention, and diagnosis, with 93 percent of children up-to-date with immunizations.

Parent Involvement Activities

Gateway Early Head Start and Head Start parents supported their children’s learning through participation in home visits, parent-teacher conferences, volunteering in the classroom, engaging in school-to-home activities, field trips, parent committee activities, and program governance.

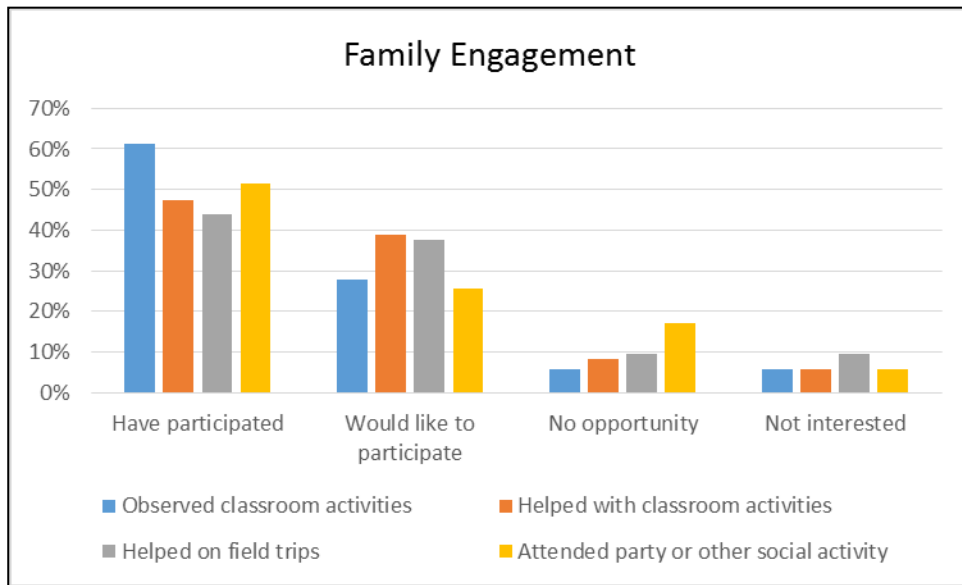
Parents participated in program governance training, using their training to provide leadership through Gateway’s Policy Council and Board as well as at the Head Start center’s parent committees.

Parents also participated in Health Literacy training, learning about when to take a child to the emergency room and how to ensure children are taking proper medication.

Parents participated in activities such as Hamilton One’s Multi-Cultural Parade. Fathers participated in “Take your child to school day.” Glassboro held its annual softball day for men. Paulsboro came together with the community to plant a garden with the children of the center. Several centers invited parents to read aloud to



the class. In Vineland, parents attended a workshop on nutrition followed by an Olympic Day with their child. Gateway Early Head Start parents and community volunteers donated more than 72,819 hours of time to support the success of their child’s Head Start experience.



Preparing Children for Kindergarten

Creative Curriculum is Gateway’s primary curriculum. Gateway also implements *Tools of the Mind* and *High/Scope* at its district collaboration sites. In addition to teacher’s weekly planning, Gateway reviews aggregate child outcomes data three times per year. The mid-year review allows for the program to make mid-year decisions for improving the program.

The curriculums selected are aligned with state early learning standards as well as the Head Start Early Learning Child Outcomes Framework. In addition, Gateway has begun aligning family engagement goals with child outcomes.

This year, Gateway has identified mathematics and gross motor skills as areas to assist teachers with curriculum implementation improvements. Gateway continues to provide supportive social-emotional services to children and has shown that children continue make good progress in the area of cognitive development.

Overall, Gateway Head Start children are doing well in school, benefiting from high quality educational and support services.

