

**GEORGETOWN COUNTY BOARD OF EDUCATION
J. B. BECK ADMINISTRATION AND EDUCATION CENTER
OPEN SESSION
BOARD ROOM – 5:30 P.M.
TUESDAY, DECEMBER 5, 2017**

AGENDA

- A. MOMENT OF SILENCE.....Board

- B. PLEDGE OF ALLEGIANCE.....Master Christopher Brown, Jr.
Fifth Grade Student at McDonald Elementary School

C. PUBLIC COMMENTS/REQUESTS: This section of each regularly scheduled Board meeting is reserved for comments from the audience on any item appearing on the agenda. Also, the time is made available for citizens to make specific requests of the School District or to raise specific issues for future discussion by the Board. Comments/requests should be as brief and to the point as possible and should not exceed 3 minutes. Persons who wish to address the Board are requested to complete one of the cards available at the entrance and submit it before the meeting begins. Normally, the Board will not address specific requests during the meeting at which they are made.

- D. APPROVAL OF MINUTES.....Board

- E. ADOPTION OF AGENDA.....Board

- F. ACTION ITEMS:
 - 1. PERSONNEL LIST.....Mr. Jon Tester
The Administration recommends approval of the Personnel List as presented.

 - 2. APPROVAL OF 25 OPEN CONTRACTS.....Mr. Jon Tester
The Administration recommends approval of 25 Open Contracts as presented.

 - 3. APPROVAL OF A REQUEST FOR USE OF A PORTABLE CLASSROOM LOCATED AT WACCAMAW ELEMENTARY SCHOOL.....Dr. H. Randall Dozier
The Administration recommends approval of a request from Georgetown County Environmental Services for use of a portable classroom located at Waccamaw Elementary School.

4. **REVISION OF
POLICY JF AND ADMINISTRATIVE
RULE JF-R: STUDENT RIGHTS AND
RESPONSIBILITIES (FIRST READING).....Ms. Lindsay Anne Thompson**
The Administration recommends *First Reading* approval for the revision of Policy JF and Administrative Rule JF-R: Student Rights and Responsibilities.

5. **REVISION OF
POLICY JCDA: STUDENT
BEHAVIOR CODE (FIRST READING).....Ms. Lindsay Anne Thompson**
The Administration recommends *First Reading* approval for the revision of Policy JCDA: Student Behavior Code.

6. **ADOPTION OF
ADMINISTRATIVE RULE JICDA-R
AND POLICY EXHIBITS JICDA-E,
JICDA-E (2) AND JICD-E (3): STUDENT
CODE OF CONDUCT (FIRST READING).....Ms. Lindsay Anne Thompson**
The Administration recommends *First Reading* approval for the adoption of Administrative Rule JICDA-R and Policy Exhibits JICDA-E, JICDA-E (2) and JICDA-E (3): Student Code of Conduct.

7. **APPROVAL OF SALE OF PARCEL OF LAND.....Ms. Lindsay Anne Thompson**
The Administration recommends approval for the sale of an approximate 7,750 square foot parcel of land adjacent to Howard School for \$20,000.00 to C & C Construction Services, pending a clear title search.

8. **REQUEST TO DISPOSE OF VEHICLE.....Mr. John Paul**
The Administration recommends approval to conduct a surplus property sale, in accordance with Board Policy DN, and Article 15 of the District's Procurement Code, specifically, for the item included below. The sale will be conducted by means of an electronic auction through GovDeals and sold to the highest bidder.
 - 2000 Dodge Ram Van

9. **APPROVAL OF INTENT TO AWARD
SCHOOL BUS CAMERA SYSTEMS.....Mr. John Paul**
The Administration recommends approval of the RFP Evaluation Committee's selection of IVS, Inc. dba AngelTrax of Dothan, Alabama out of five (5) responsive proposals received and three vendor presentations for the purchase and installation of approximately 100 bus camera systems in the amount of \$186,261.45 along with an Indefinite Delivery Contract (IDC) for ongoing service of same.

10. APPROVAL OF CONTRACT AWARD FOR SEVEN (7) ATHLETIC FIELDS HIGH MAST LIGHTING REPAIRS, HURRICANE REMEDIATION.....Mr. John Paul
The Administration recommends approval of contract award for replacement athletic field lighting for Andrews High, Carvers Bay High, Georgetown High and Mike Johnson sports fields in the amount of the base bid of \$48,825.00 with a not to exceed cost of \$55,000.00 to Kingston Electric, Inc. from Conway, South Carolina who has been deemed the low bidder of the two (2) bids received.

11. APPROVAL OF CONTRACT AWARD FOR POLYURETHANE SURFACING OF ATHLETIC TRACKS AT ALL HIGH SCHOOLS.....Ms. Lisa W. Ackerman
The Administration recommends approval of a contract award for polyurethane surfacing of the athletic tracks at Andrews, Carvers Bay, Georgetown, and Waccamaw High Schools, to Beynon Sports Surfaces, from Hunt Valley, Maryland, as the lowest responsive and responsible bidder of record, in the amount of \$1,076,100.00, with a not to exceed construction cost of \$1,100,100.00.

G. INFORMATION ITEMS:

- 1. REFERENDUM CONSTRUCTION UPDATE.....Mr. Bob Sebire**
M. B. Kahn Construction Company
- 2. MOU WITH FAMILY JUSTICE CENTER FOR DONATION DISTRIBUTION CENTER AT CAREER CENTER.....Dr. H. Randall Dozier**

H. BOARD/SUPERINTENDENT COMMENTS/REQUESTS

I. EXECUTIVE SESSION:

- 1. DISCUSSION OF CONTRACTUAL STATUS OF POST-TERI EMPLOYEES**

J. OPEN SESSION: ACTION AS NECESSARY OR APPROPRIATE REGARDING DISCUSSION OF CONTRACTUAL STATUS OF POST-TERI EMPLOYEES

K. ADJOURNMENT

REMINDER: Meeting Cancellation & New Meeting Date

The Georgetown County Board of Education's Regular Board Work Session Meeting on Tuesday, December 19, 2017 has been cancelled. The Regular Board Meeting on Tuesday, January 2, 2018 has been moved to Tuesday, January 9, 2018, at 5:30 p.m., in the Board Room, at J. B. Beck Administration and Education Center.



Georgetown County
Department of Public Services
Innovative Leadership & Teamwork!



Dr. H. Randall Dozier, Superintendent
Georgetown County Public Schools
J. B. Beck Administration and Education Center
2018 Church Street
Georgetown, SC 29440

October 13, 2017

Dear Dr. Dozier:

Georgetown County Environmental Services aims to educate children and the public about the benefits of recycling, the solid waste trail, and South Carolina's beautiful natural ecosystem. In the past, the Environmental Services division independently held presentations and tours for school field trips and the public; however, going forward Georgetown County Environmental Services would like to focus environmental education tailored around the Georgetown County school system.

We would like to partner with the Georgetown County schools in developing environmental education courses that meet the school requirements for each grade. Proposed courses to be held at the Georgetown County Environmental Education Center include but are not limited to the following:

- Recycling
- Landfills
- S.C. Wildlife
- Composting
- Water Quality
- Wetland Ecology
- Forest Ecology
- Air Quality
- Botany
- Pollution Solutions

The Georgetown County Environmental Services Facility currently houses two buildings used for Environmental Education—the Environmental Education Center and the Nature Center—and a beautiful natural preserve suitable as an outdoor learning space.

Unfortunately, due to damage from Hurricane Matthew, the Nature Center is no longer safe for use. The Environmental Services Division would like to use the portable classroom, currently located at Waccamaw Elementary School, as the new Nature Center.

Administration

108 Screven Street • PO Drawer 421270 • Georgetown, SC 29440
Phone: 843-545-3325 • Fax: 843-545-3648 • email: rcfunnye@gtcounty.org

The proposed plan for the Nature Center redesign will be as follows:

- Outdoor Gardens (Edible Garden/Wildflowers)
- Animal Displays
 - Freshwater tank
 - Brackish Tank
 - Salt Water Touch Tank
 - Snake/Turtle Displays
 - Frog Display
 - Lizard Display
- Interactive technology displays
- Stagnant Displays

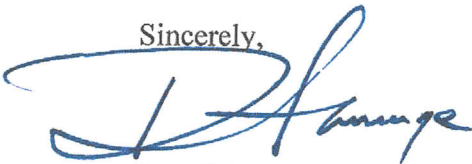
Environmental Education connects us to the world around us. The following are just some of the benefits of integrating environmental education in the classroom:

1. Environmental Education is hands-on, interactive learning that sparks the imagination. When integrated into the curriculum, students are more engaged in learning, which raises achievement in core academic areas.
2. Not only does Environmental Education offer opportunities for experiential learning, it enables students to apply this learning in the real world so they see the interconnectedness of social, ecological, economic, cultural, and political issues.
3. Environmental Education encourages students to investigate how and why things happen and make their own decisions about complex environmental issues, fostering a new generation of informed consumers, workers, as well as policy makers. It also promotes tolerance of different cultures and points of view.
4. By incorporating environmental education practices into the curriculum, teachers can integrate science, math, language arts, history, and more into one interdisciplinary activity, and still satisfy numerous state and national academic standards in all subject areas.
5. When students decide to learn more or take action to improve their environment, they reach out to community experts, donors, volunteers, and local facilities to help bring the community together to understand and address environmental issues. Thus, environmental education empowers youth to make a difference in their communities while helping teachers boost their environmental knowledge and teaching skills.

By partnering with Georgetown County Environmental Services, Georgetown County Schools will be able to utilize a hands-on learning facility without the responsibility of maintenance. We would like to invite you to tour our Environmental Education Facility and talk with us more about future opportunities.

Finally, we hope that you give favorable consideration to our request to transfer ownership of the portable classroom at Waccamaw Elementary School for our new and improved Nature Center.

Sincerely,



Ray C. Funnye
Director

Administration

108 Screven Street • PO Drawer 421270 • Georgetown, SC 29440
Phone: 843-545-3325 • Fax: 843-545-3648 • email: rcfunnye@gtcounty.org

General

Policy JF: Student Rights and Responsibilities specify acceptable conduct for students while on campus, at school-sponsored events, and while riding on school buses or other school-provided transportation. This portion of the policy outlines consequences for violations of the Rights and Responsibilities policy. Offenses and consequences listed are not comprehensive, and are not limited to the items listed.

Level I: ~~Disorderly Conduct~~ Behavioral Misconduct

~~Disorderly Conduct~~ Behavioral Misconduct is defined as those activities engaged in by the student which tend to impede orderly classroom procedures/instructional activities/orderly operation of the school, or the frequency or seriousness of which disturb the classroom or the school. Records will be maintained for all offenses. ~~Repeated Level I offenses may be considered Disruptive Conduct and moved to Level II.~~ Administration may reclassify Behavioral Misconduct (Level I) as Disruptive Conduct (Level II) if the student engages in the activity three or more times.

Level II: Disruptive Conduct

Disruptive Conduct is defined as those activities engaged in by the student which are directed against persons or property and the consequences of which tend to endanger the health or safety of oneself or others in the school. Some instances of Disruptive Conduct may overlap certain criminal offenses, justifying both administrative sanctions and court proceedings.

Level III: Criminal Conduct

Criminal Conduct is defined as those activities engaged in by students which result in violence to oneself or another's person or property or which pose a direct and serious threat to the safety of oneself or others in the school. These activities usually require administrative action which results in immediate

removal of the student from the school, the intervention of law enforcement authorities, and/or action by the Board.

Student Categories

Suggested consequences are established by varying levels which take into account the number of prior offenses a student has committed. Administrators have the option of moving to a higher consequence level in severe cases, or moving to a lower level if the situation warrants.

Make-up Work

Make-up work missed during any period of suspension is the responsibility of the student. Work must be made up within 5 days of the return to school.

Purpose: To establish the Board's expectations for Georgetown County School District students' behavior.

The Board expects students to conduct themselves in an orderly, courteous, dignified and respectful manner. This requirement refers to their actions toward other students and school district employees, their language, their dress and their manners. The Board believes self-discipline is an interpersonal goal of public education.

Students have a responsibility to know and respect the policies, rules and regulations of the school and District. Violations of such policies, rules and regulations will result in disciplinary actions. The Board directs students to the District's Behavior Code set forth in this policy and the student handbook for their individual school. The Board authorizes its school authorities to employ probation and suspension and to recommend expulsion, if necessary, to enforce this policy.

It is the philosophy of the District to handle all student disciplinary matters at the lowest supervisory level possible and in the most reasonable manner possible. Disciplinary action will be taken in accordance with appropriate procedural rights being afforded to students and their parents/guardians as provided by State law, State Board of Education regulation, and/or the policies of this District.

The Board and the administration offer the following listing of offenses and the required or recommended dispositions for the information of students, parents/legal guardians and school personnel.

Application of this policy

The following rules regarding student conduct are in effect during the following times and in the following places:

- on the school grounds during, and immediately before or immediately after, school hours;
- on the school grounds at any other time when the school is being used by a school group;
- off the school grounds at a school activity, function or event;
- en route to and from school or a school activity on a school bus or other school vehicle;

- at any time or in any place that impacts the school's ability to maintain order and discipline in the Georgetown County School District.

Student conduct away from school grounds or school activities

The Board expects administrators to take appropriate action when information becomes available about student misconduct away from school grounds or school activities that may have a direct and detrimental effect on or seriously threaten the discipline, educational environment, safety or general welfare of students, faculty, staff and/or administrators of the District. When assessing the impact of out-of-school behavior in a District school, the administrator should take into consideration the seriousness of the alleged out-of-school offense and the protection of students, faculty, staff and administrators from the effects of violence, drugs and/or disruptions.

Administrators are directed to evaluate each situation on a case-by-case basis. At a minimum, administrators or their designees should meet with the student upon his/her arrival at school, give the student notice of the concerns based on the reported out-of-school behavior and allow the student an opportunity to present his/her side of the story. Based upon all of the circumstances, including a finding that the alleged conduct will have a direct and immediate effect on the school or threatens the discipline, educational environment, safety or general welfare of students, faculty, staff and/or administrators of the school, the administration may either permit the student to attend classes as usual or may take appropriate disciplinary action including, but not limited to, in-school suspension or out-of-school suspension in order to conduct an investigation into the matter. The parents/legal guardians of students will be notified of any action taken by the administration and offered the opportunity for a conference with the administration.

In the event the student is incarcerated based on his/her out-of-school conduct, the principal or his/her designee will notify the student that he/she is to meet with the administration prior to returning to school. At the conclusion of the inquiries to obtain more information on the matter, the administrator or his/her designee should take appropriate action which may include, but is not limited to, one or more of the following:

- returning the student to his/her normal class schedule and removing all evidence of suspension;
- placing the student on probation and allowing the student to resume his/her normal class schedule;
- placing the student on probation, allowing the student to continue class work, but prohibiting the student's participation in extracurricular activities and/or designated school activities, for example, athletic sports, clubs, study halls, pep rallies, student government activities and so forth;
- suspending the student;
- recommending placement in the District's alternative program/school;
- recommending expulsion of the student for the remainder of the year;

- prohibiting the student's participation in extracurricular activities for the ensuing school year.

The disciplinary action taken must be supported by the evidence and take into full consideration the impact of the student's presence at school on the discipline, educational environment and safety or general welfare of other students, faculty, staff and/or administrators of the school.

LEGAL REFERENCES

59-63-210, et.seq., SC Code of Laws as amended

JICDA-R

STUDENT CODE OF CONDUCT

Issued: 10/17

Page 1 of 1

Level I - Behavioral Misconduct

Behavioral misconduct includes any activity in which a student engages that tends to impede orderly classroom procedures or instructional activities, orderly operation of the school, or the frequency or seriousness of which disturb the classroom or school.

Acts of behavioral misconduct may include, but are not limited to, the following:

- classroom tardiness
- cheating on examinations or classroom assignments
- lying
- abusive language between or among students
- failure to comply with directives from school/district personnel or agents (to include volunteer aides or chaperones)
- use of forged notes or excuses
- cutting class
- school tardiness
- truancy (three consecutive unlawful absences from school or a total of five unlawful absences)
- possession of an electronic communications device as defined by and in conflict with district policy
- other acts of behavioral misconduct as determined and communicated by the administration

Staff will follow these basic enforcement procedures in instances of behavioral misconduct and will maintain a complete record of the procedures.

When a staff member observes, or is notified of and has verified acts of behavioral misconduct, the staff member will take immediate action to rectify the misconduct. Verification is defined as self-admittance by the student, witnessed involvement of the student by staff, parental admission of student involvement, or evidence obtained through an investigation. The staff member will impose an appropriate consequence and maintain a record of the misconduct and the consequence.

If, either in the opinion of the staff member or according to policy, a certain misconduct is not immediately rectifiable, the staff member should refer the problem to the appropriate administrator for action specified by policy.

The administrator should meet with the reporting staff member, and, if necessary, the student and the parent/legal guardian, and impose the appropriate consequence and/or establish an intervention plan and/or behavioral contract.

Consequences that may be applied in cases of behavioral misconduct may include, but are not limited to, the following

- verbal reprimand

- withdrawal of privileges
- demerits
- detention (silent lunch, after school, weekends, or another time that does not interfere with the instructional day)
- other consequences as approved and communicated by the administration

Level II - Disruptive Conduct

Disruptive conduct includes those activities in which students engage that are directed against persons or property and the consequences of which tend to endanger the health or safety of themselves or others in the school. Some instances of disruptive conduct may overlap certain criminal offenses, justifying both administrative consequences and court proceedings.

The administration may reclassify behavioral misconduct (Level I) as disruptive conduct (Level II) if the student engages in the activity three or more times.

Acts of disruptive conduct may include, but are not limited to, the following:

- violation of a Level I intervention plan and/or behavioral contract
- use of an intoxicant
- fighting
- harassment, intimidation, or bullying
- vandalism (minor)
- stealing
- threats against others
- trespassing
- abusive language to staff
- repeated refusal to comply with directives from school personnel or agents (such as volunteer aides or chaperones)
- possession or use of unauthorized substances, as defined by law and/or local school board policy
- illegally occupying or blocking school property in any way with the intent to deprive others of its use
- unlawful assembly
- disrupting lawful assembly
- hazing
- inappropriate use of technology (e.g., bullying, harassing, or intimidating other students or district employees; plagiarizing copyrighted materials; and accessing inappropriate websites)
- other acts as determined and communicated by the administration

Staff will follow these basic enforcement procedures in instances of disruptive conduct and will maintain a complete record of the procedures.

When an administrator observes, or is notified of and has verified an offense, the administrator will investigate the circumstances of the misconduct and confer with staff on the extent of the consequences.

The administrator will notify the parent/legal guardian of the student's misconduct and related proceedings. The administrator will meet with the student and, if necessary, the parent/legal guardian, confer with them about the student's misconduct, and impose the appropriate disciplinary action.

The administrator may refer the student to the appropriate intervention team to establish behavioral management strategies (e.g., restorative justice, counseling, service learning projects) and propose the appropriate disciplinary action.

The administrator or school official may refer Level II misconduct to the school resource officer or other law enforcement authorities only when the conduct rises to the level of criminality and the conduct presents an immediate safety risk to one or more people or it is the third or subsequent act which rises to the level of criminality during the school year.

The administration may apply consequences in cases of disruptive conduct which may include, but are not limited to, the following:

- temporary removal from class
- alternative education program
- in-school suspension
- out-of-school suspension
- transfer
- referral to outside agency
- expulsion
- restitution of property and damages, where appropriate
- other consequences as approved and communicated by the administration

Level III - Criminal Conduct

Criminal conduct includes those activities in which students engage that result in violence to themselves or to another's person or property or which pose a direct and serious threat to the safety of the students themselves or others in the school. These activities usually require administrative actions which result in the immediate removal of the student from the school, the intervention of the school resource officer or other law enforcement authorities, and/or action by the board.

Acts of criminal conduct may include, but are not limited to, the following:

- assault and battery
- extortion
- threat of the use of a destructive device (bomb, grenade, pipe bomb, or similar device)
- possession, use, or transfer of dangerous weapons
- sexual offenses
- vandalism (major)
- theft, possession, or sale of stolen property
- arson
- furnishing or selling unauthorized substances, as defined by law and/or board policy
- furnishing, selling, or possession of controlled substances (drugs, narcotics, or poisons)
- illegal use of technology (e.g., communicating a threat of a destructive device, weapon, or event with the intent of intimidating, threatening, or interfering with school activities; maliciously transmitting sexual images of minors other than images of the student or images transmitted with the uncoerced consent of the individual in the images)
- threatening to take the life of or inflict bodily harm upon a teacher, principal, or members of their immediate family

Staff will follow these basic enforcement procedures in instances of criminal conduct and will maintain a complete record of the procedures.

When an administrator observes, or is notified of and has verified a criminal offense, the administrator must contact the school resource officer or local law enforcement authorities immediately.

An administrator will notify the student's parent/legal guardian as soon as possible.

An administrator will impose the appropriate disciplinary action. If warranted, the administrator should immediately remove the student from the school environment.

Staff will follow established due process procedures when applicable.

The administration may apply consequences in cases of criminal conduct which may include, but are not limited to, the following:

- out-of-school suspension
- assignment to alternative schools
- expulsion
- restitution of property and damages, where appropriate (should be sought by school authorities)
- other consequences as approved and communicated by the administration

School Bus Code

Georgetown County students, given the privilege of transportation by the school district, will be expected to adhere to the same rules and regulations stated in the district's disciplinary policy and school bus rider discipline guidelines. Students must comply with regulations for riding the school bus in order to retain this privilege, and students are expected to follow directions/instructions given by bus drivers.

The bus driver has the responsibility for supervision of students on the bus and assigning seats working in cooperation with the principal. The driver should stop the bus in a safe location at any time that misbehavior or threatened misbehavior pose a hazard to safe driving.

Under no circumstances should a bus driver require a misbehaving student to leave a bus without assuring that the student is under appropriate adult supervision. The driver will report to law enforcement and/or building administrators, students who create a disturbance on school buses. The administrator, as authorized by state law and regulation, may suspend or deny bus transportation to a student whose conduct is persistently and/or flagrantly detrimental to safety and order on the bus, or the administrator may choose an appropriate alternative punishment. A parent or guardian shall be notified prior to the suspension of any pupil from the riding of a school bus.

School Bus Rider Discipline Code Guideline

Students are subject to both the Code of Conduct under Board policy and this School Bus Rider Discipline Code.

The riding of a school bus by students is a privilege. Eligible students are initially granted the privilege of school transportation service; however, after the initial service all eligible students must earn the privilege by following this Discipline Code and Code of Conduct. The School Board expects that while students are utilizing the student transportation services, they will conduct themselves in a manner consistent with the district's Student Code of Conduct. All school bus riders must cooperate fully with their school bus drivers and aides/monitors and must conduct themselves properly at all times.

School bus drivers have responsibility for the supervision of students on the bus and when they are in the immediate vicinity of the school bus during loading and unloading. School bus drivers shall report to the appropriate school principal, or the district's designee, the name of any student whose conduct interferes with the safe driving, operation, loading, or unloading of the bus; who acts disruptively; or who violates the Code of Conduct or laws. The principal, or the district's designee, has the responsibility of investigating reports made by the bus driver regarding incidents of student misconduct and any student disciplinary actions taken by a school bus driver. The principal, or the district's designee, has the responsibility of investigating reports made by the bus driver regarding incidents of student misconduct and any student disciplinary actions taken by a school bus driver. The principal, or the district's designee, as authorized by state law and regulation and school district policy, has the authority to deny school bus transportation to a student and to issue sanctions for conduct that is persistently or flagrantly detrimental to safe and/or orderly operation of a school bus or in violation of the Code of Conduct.

Behavioral misconduct includes, but is not limited to, the following behavior on or around a bus or at a bus stop while the bus is present:

- getting on or off the bus at an unauthorized stop without permission;
- eating and/or drinking on the bus;
- standing or sitting improperly while the bus is moving;
- violating any safety procedures;
- intentionally riding a bus other than the assigned one without permission from the principal or the district's designee;
- continually making loud noises, yelling, and the like;
- pushing, tripping, engaging in general horseplay;
- encouraging others to misbehave;
- defacing property (writing or marking on the bus);
- littering inside the bus;
- possessing and/or using any tobacco product, e-cigarette, vaporizer, or other illegal substances on the bus;
- throwing objects out of, inside of, and/or at the bus;
- refusing to sit in an assigned seat;
- using profanity, abusive language, and/or obscene gestures;
- having hands, arms, head, and so forth out of the bus windows and/or doors;
- using rude, discourteous behavior toward the driver or other passengers;
- disobeying the bus driver or the aide/monitor;
- harassing, threatening, intimidating, or physically abusing or hitting another student; and fighting.

Serious misconduct may result in disciplinary action without regard to the number of offenses, up to and including suspension or expulsion from school, in accordance with Board policy.

Extenuating or Mitigating Circumstances

The board may confer upon the appropriate administrator the authority to consider extenuating or mitigating circumstances which may exist in a particular case of misconduct, excluding criminal conduct. The administrator should consider such circumstances in determining the most appropriate sanction.

The board may also confer upon the appropriate administrator the authority to consider aggravating circumstances which may exist in a particular case of misconduct or criminal conduct. Such circumstances should be considered in determining the most appropriate sanction.

Discipline of Students with Disabilities

Students with disabilities are not exempt from school disciplinary processes, nor are they entitled to remain in a particular educational program when their conduct substantially impairs the education of other students in the program. However, federal and state laws and regulations require schools to meet the individual educational needs of such students to the extent possible.

The process of disciplining a student who receives special education services involves both administrative authorities who are responsible for discipline and the special education department, including teachers and administrators who have been assigned specific responsibilities in the implementation of the student's Individualized Education Program (IEP).

Program prescriptions

An IEP team may prescribe or prohibit specified disciplinary measures for an individual student by including appropriate provisions in the student's IEP. The committee must take into consideration the student's disabling condition when deciding whether or not staff may use a particular form of discipline. Administrative authorities will observe any such provisions contained in a student's IEP.

Suspensions

The administration may suspend a student with a disability unless a suspension is prohibited by the student's IEP. At the end of the suspension, the school will return the student to the same educational placement, if appropriate.

The school may suspend a student for not more than 10 consecutive school days, and for additional removals of not more than 10 consecutive school days in that same school year for separate incidents of misconduct (as long as those removals do not constitute a change in placement under the law).

However, students who bring weapons to school or a school function, knowingly possess or use illegal drugs or solicit the sale of controlled substances, or inflict serious bodily injury upon another person while at school or a school function may be removed for up to 45 days at a time. If school officials believe that a student with a disability is substantially likely to injure him/herself or others in the student's regular placement, they may ask an impartial hearing officer to order that the student be removed to an interim alternative educational setting for a period up to 45 days.

Expulsions

Expulsion of a student with a disability is equivalent to a change in educational placement and, therefore, requires special procedures. Before such a student may be expelled, a multi-disciplinary team must determine whether or not there is a connection or causal relationship between the disabling condition and the misconduct. If so, then expulsion resulting in cessation of educational services for the student is not the appropriate discipline.

The district will continue to provide a free and appropriate education as set forth in a student's IEP to expelled students with disabilities.

Immediate removal

Nothing contained in this administrative rule will be construed as limiting an administrator's ability to remove a student with a disability from school immediately under emergency conditions.

LEGAL REFERENCES

Click here to log in
[Show All Selections](#)
[Clear](#)

[Selection Options](#)
[Zoom to selected map feature](#)

PLAT	A-019
TMS	05-0025-088-00-00
OBJECTID	37155
editdate	
Shape.STLength()	
editdate	
GlobalID	{1F1BF7D9-B90F-48D0-8571-E20EFE9DDA4A}
side.SDE.parcelpoly2017.Area	7871.03405762
created_user	
created_date	
last_edited_user	
last_edited_date	
Legal	
TMS	E BROOKLYN COOPERAGE
Street Number	05-0025-088-00-00
Acresage	0
Date	2015-11-30 19:00:00
Sale	105000
Legal Ref	2697-333
Location	BUTTS ST
Owner	GEORGETOWN COUNTY SCHOOL DIST
Owner 2	
Address1	P O BOX 471
Address2	
City	GEORGETOWN
State	SC
Zip	29442

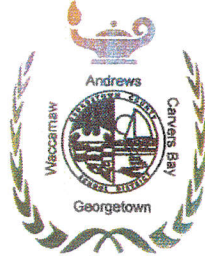






Georgetown County School District

J.B. BECK ADMINISTRATION AND EDUCATION CENTER
2018 CHURCH STREET • GEORGETOWN, S.C. 29440 • PHONE (843) 436-7000



To: Lisa Johnson,
Associate Superintendent for Finance and Operations

From: Tony Holcomb

Date: November 7, 2017

Re: Disposal of Vehicles

2000 Dodge Ram Van
License Plate: CG50063
VIN #: 2B7JB21Y0YK160517

I recommend the following vehicle should be removed from service due to the following reasons:

- 1) Van has excessive roof leaks due to rust and corrosion.
- 2) Van has excessive mileage (cannot read due to computer module not working).
- 3) Van has a computer control module that can no longer be ordered.
- 4) Transmission needs rebuilding.

A handwritten signature in blue ink, appearing to read "Tony Holcomb".

Tony Holcomb

Maintenance Coordinator
Georgetown County School District
Facilities Maintenance Services

APPROVAL OF CONTRACT AWARD FOR SEVEN (7) ATHLETIC FIELDS HIGH MAST LIGHTING REPAIRS, HURRICANE REMEDIATION Mr. John Paul
The Administration recommends approval of contract award for replacement athletic field lighting for Andrews High, Carvers Bay High, Georgetown High & Mike Johnson sports fields in the amount of the base bid of \$48,825.00 with a not to exceed cost of \$55,000.00 to Kingston Electric, Inc. from Conway, South Carolina who has been deemed the low bidder of the two (2) bids received.

Attached Bid Tabulation Form

BID TABULATION FORM

Project Title:		HIGH MAST LIGHTING REPAIRS (7 Pkds)												
S.C.A. #16094-V7		GEORGETOWN COUNTY SCHOOL DISTRICT												
GCCSD #1808006		BID TABULATION												
CONTRACTOR	ADD. ACRN.	BASE BID					ATTACHMENTS					REMARKS		
		unit pricing	License	Signature	RFI Form	REFERENCES	INSURANCE	SAFETY SECURITY	ACCEPTANCE					
Andrews High														
Carvers Bay High														
Georgetown High														
Mike Johnson Field														
TOTAL LUMP SUM														
West Electric														
Kingston Electric														
West Electric														
EXAB Electric														
Manall Electric														
Burris Electric														
M-W Electric														
SAVING ELECTRIC														
3E														
TWI Electric														
Torrence Sport Lighting														
Architect:	<i>Judy Cooper</i> Witness: <i>Shawn P. [Signature]</i> <i>William Campbell</i>													

Bid Opening Date: 11/17/2017
 Bid Opening Time: 2:00 PM

Bid Opening Location: J.B. BECK

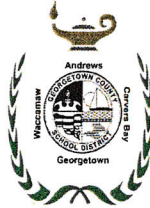
Georgetown County School District

BUSINESS SERVICES
PROCUREMENT OFFICE

2018 Church Street

Georgetown, S.C. 29440

Phone (843) 436-7000



ANNOUNCEMENT

Notice of Award

Project: Polyurethane Track Surface
Andrews, Carvers Bay, Georgetown and Waccamaw High Schools
Solicitation: #1811103

November 29, 2017

The District will award the above referenced project to Beynon Sports Surfaces, Incorporated, from Hunt Valley, Maryland, in the amount of the base bid of \$1,076,100.00, with a "not to exceed" project construction cost of \$1,100,100.00.

Beynon Sports Surfaces, Incorporated, has been determined to be the lowest responsive and responsible bidder of record.

Final approval of contract award was made by the Georgetown County School District's Board of Trustees at the regularly scheduled Board Meeting at 5:30 p.m. on December 5, 2017.

"Award" occurs when the contract is executed between the Contractor and the District, and not sooner. You are cautioned not to begin work on the contract or incur any costs associated with the contract prior to the effective date of the contract. Georgetown County School District assumes no liability for the expenses incurred prior to the effective date of the contract.

Georgetown County School District

By: *Lisa Johnson*
Lisa Johnson, CPA
Associate Superintendent for Finance and Operations

Georgetown County School District

By: *Lisa Ackerman*
Lisa Ackerman, CPPB
Director of Bond Referendum Construction & Procurement



Questions may be directed to Lisa Ackerman, at (843) 436-7027.

OWNER: Georgetown County School District
PROJECT: Four High Schools, polyurethane track surface
LOCATION: Andrews, Carvers Bay, Georgetown & Waccamaw High Schools, Georgetown County, SC
DATE OF BID: Tuesday, November 28, 2017 @ 3:00 PM

CONTRACT: Polyurethane Surface

Bidders	Addendum		Base Bid			Unit prices			Mobilization
	1	2	Surface #1	Surface #2	Surface #3	#1	#2	#3	
Att Sports, Inc							/	/	
Beynon Sports	X	X	\$734,880	\$1,076,100	\$1,366,480	\$33.13	/\$48.14	/\$60.23	\$8,000
Conica						/	/	/	
						/	/	/	
						/	/	/	
						/	/	/	
						/	/	/	
						/	/	/	
						/	/	/	
						/	/	/	
						/	/	/	
						/	/	/	
						/	/	/	

This is certified as being a true tabulation for the bids received on this Contract.

Georgetown County School District
 Procurement Office

 Lisa Ackerman, Procurement Director

 Robert J. Sebire/Project Director, M. B. Kahn



November 28, 2017

Ms. Lisa Ackerman
Georgetown County School District
J. B. Beck Administration and Education Center
2018 Church Street
Georgetown, SC 29440

RE: 2016 Building Program/Polyurethane Track Surface Bid for all four high schools

Lisa,

The bid for the polyurethane track surface for all four (4) high schools closed this afternoon. Unfortunately, only one (1) formal bid response was received to the public solicitation for services. As we have discussed in detail, the polyurethane track surface is a specialty construction item with a limited number of qualified manufacturers and trained installers. Nonetheless, we are confident the District received a competitive price for this package.

After extensively reviewing the various track surfaces available, we chose this surface as the best value to meet the District's needs and budget. We also visited two (2) sites where this type of track has been installed and received highly favorable comments from the Owners of those tracks. This decision limited the product offering to three (3) known track surface manufacturers, which regularly install this type of track.

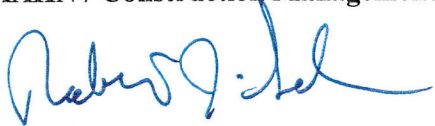
- 1) One of those manufacturers has their base of operations in Houston. This firm is still recovering from the impact of the Hurricane which struck this summer and therefore was unable to bid this project.
- 2) The second firm flew a staff member down for the pre-bid meeting from New Jersey. That firm intended to bid through an installer, but we did not receive their bid. Following the bid opening, I contacted the representative and they do not know why the installer did not bid, as they had estimated the job.

Prior to the issuance of the solicitation, during fact discovery, both manufacturers stated their products could be installed in the \$48 to \$50 per square yard range. The single bid received today includes a unit price to add or delete equal to \$48.14 per square yard, which is comparable to the current market values. The line item budget for each track was \$440,000. The asphalt portion of Georgetown and Waccamaw High Schools came in at \$199,800 and \$198,200, respectively. Each bid also included a \$15,000 allowance for any rework to the running track surface. Neither school required any additional asphalt work, the net cost for each was actually \$184,800 and \$183,200. The track surface bid breakdown for Georgetown and Waccamaw High tracks is listed as \$261,200 and \$257,820, respectively, with each including an allowance of \$12,000 for temporary striping if that becomes necessary. The net cost for each track without the allowances will be \$434,000 and \$429,020. Both projects will be within the budget line item for this package. The asphalt work at Andrews and Carvers Bay have as yet not been bid, but we expect similar results with Andrews and a slight increase for Carvers Bay as there is more rework required at that track.

Following today's bid opening and review of submission, we recommend awarding the Polyurethane Track Surface package to Beynon Sports Surfaces, Inc. in the amount of \$1,076,100, specifically, for the Beynon BSS 300 track surface. This is the same track surface the District observed at Doug Shaw Stadium in Myrtle Beach. This contract includes a \$24,000 allowance to install temporary striping on the current surface if the polyurethane surface cannot be installed prior to track season. This contract will provide the running track surface upgrade within budget for each of the four (4) projects.

Sincerely,

M. B. KAHN / Construction Management Division

A handwritten signature in blue ink, appearing to read "Robert J. Sebire". The signature is fluid and cursive, with a prominent initial "R" and a long, sweeping tail.

Robert J. Sebire
Project Director

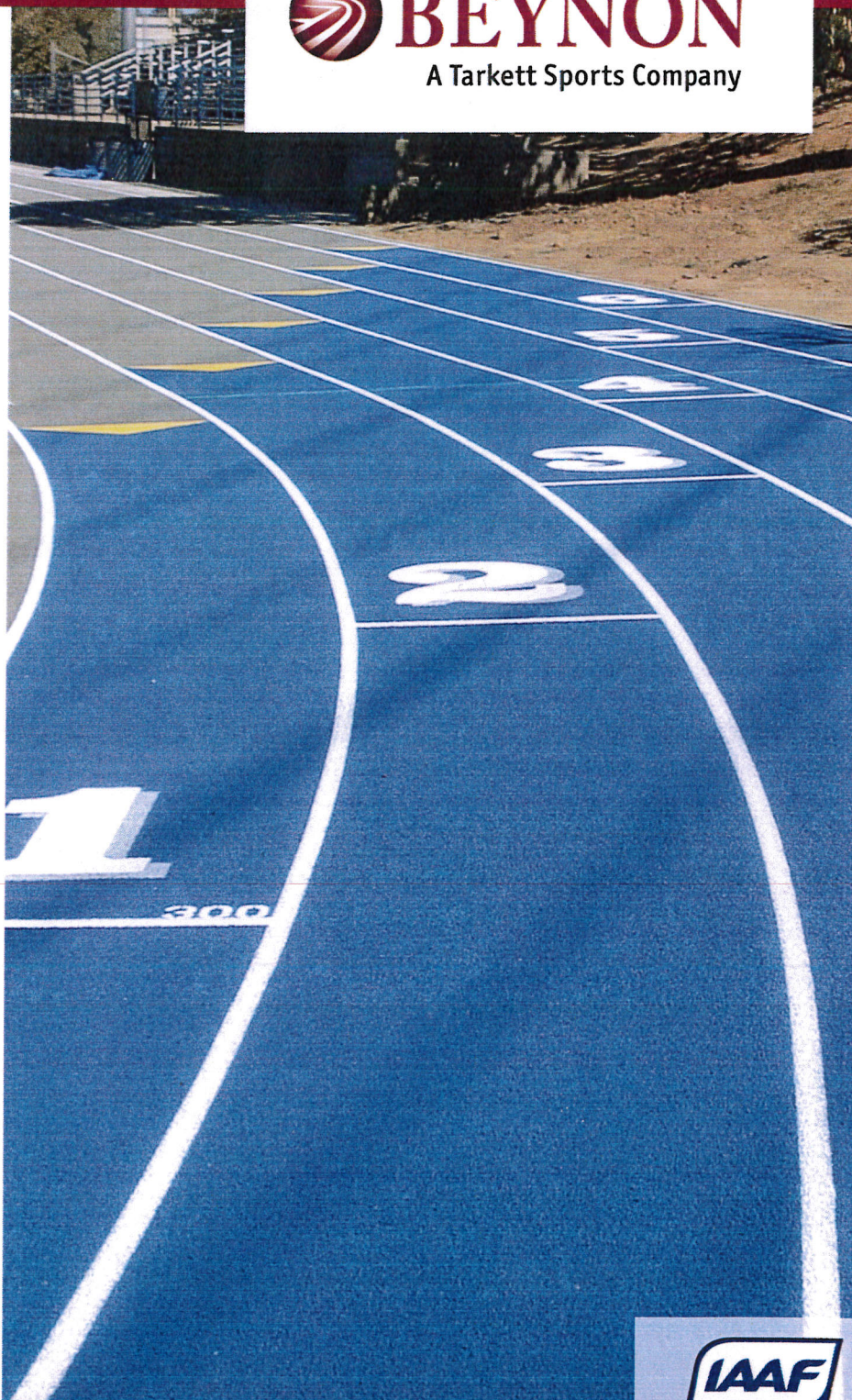
BSS 300

ENHANCED FEEL

Built on more than 40 years of Beynon Sports' experience and backed by an industry leading five (5) year warranty, the BSS 300 is a Sandwich Track and Field System that combines an economical paved-in-place polyurethane basemat with the look of a full pour polyurethane system. Once the single-component polyurethane basemat is paved, the system is sealed with Beynon's thixotropic two-component polyurethane sealer to create an impermeable surface. The finished surface is topped with a 5mm Wear Layer comprised of Beynon's high-performance polyurethane and your choice of Embedded, Encapsulated or our Hobart texture.

The BSS 300 is a durable and resilient all-weather surface that exceeds IAAF performance standards for outdoor tracks. It offers a similar feel to traditional full pour systems to allow the athlete to experience heightened control during competitions while benefiting from improved force reduction for daily training.

Longer Lifecycle
Enhanced Performance
IAAF Certified



TECHNICAL DATA

Construction

- Paved-In-Place Polyurethane Basemat
- Two-Component Impermeable Sealer
- Two-Component Polyurethane Wear Layer with Virgin EPDM Granules

Bond to the Substrate
 Mechanical

Available Textures
 Embedded
 Encapsulated
 Hobart



BSS 300
Embedded Polyurethane Sandwich
Synthetic Track Surfacing System Specifications

Part 1 – General

1.1 Scope

- A. The synthetic surfacing contractor shall furnish all labor, materials, equipment, supervision and services necessary for the proper completion of the **BSS 300** Synthetic Track Surfacing System and related work indicated on the drawings and specified herein.
- B. The synthetic surfacing contractor shall refer to the drawings for the required locations of synthetic track surfacing to be installed. All quantities and dimensions shall be field verified by the synthetic surfacing contractor.

1.2 Specific Scope of Work

- A. Install an IAAF approved, impermeable polyurethane synthetic track system consisting of SBR Rubber and BEYPUR, a single-component polyurethane binder and BEYPUR, a poured-in-place, two-component U.V. stabilized elastomeric polyurethane wearing layer with an embedded textured finish.
- B. Layout and paint all track lines and event markings as required and specified by current IAAF and NCAA rules.

1.3 Coordination

- A. The synthetic surfacing contractor shall coordinate the work specified with an authorized and appointed representative of the owner so as to perform the work during a period and in a manner acceptable to the owner.

Part 2 – Codes and Standards

2.1 Applicable Publications

- A. Codes and standards follow the current guidelines set forth by the International Amateur Athletic Federation (IAAF) and the National Collegiate Athletic Association (NCAA), along with the current material testing guidelines as published by the American Society of Testing and Materials (ASTM).

2.2 Performance Standards

The BSS 300 synthetic track surfacing system shall exhibit the following minimum performance standards as required by IAAF:

- | | |
|-----------------------------|---------------------------|
| A. Thickness: | (12-13mm) or as specified |
| B. Force Reduction | 35-50% |
| C. Vertical Deformation: | 0.6mm-2.5mm |
| D. Coefficient of Friction: | ≥ 0.5 (47 TRRL Scale) |
| E. Tensile Strength: | ≥ 0.5 Mpa |
| F. Elongation: | ≥ 40% |

Part 3 – Quality Assurance

3.1 Contractor and Manufacturer Qualifications

- A. The CONTRACTOR and the MANUFACTURER must be the same.
- B. The CONTRACTOR must have a minimum of 10 years experience in the installation of poured-in-place, two-component elastomeric polyurethane synthetic track surfacing.
- C. The CONTRACTOR shall be able to furnish evidence that they have been in business for a period of not less than 3 years, under the present name, and if required, furnish financial statements for each of the past 3 years.
- D. The CONTRACTOR must have installed a minimum of 10 outdoor track facilities in the last 2 years using the exact, IAAF certified, synthetic track surfacing, as specified herein with the contractor bidding this project.
- E. The MANUFACTURER must have a minimum of 10 years of experience with compound two-part polyurethane for athletic surfaces.
- F. The CONTRACTOR is required to provide documentation that shows the selected specified and installed product meets current IAAF Performance Standards for Synthetic Surfaced Athletics Tracks (Outdoor) and is certified in terms of the IAAF certification system as updated to present day.
- G. CONTRACTOR is to provide a list of completed facilities, minimum of 10 which are certified to meet IAAF/NCAA rules & regulations, utilizing the same product as specified.

- H. The MANUFACTURER must offer a minimum of six (6) IAAF Certified Track Systems.
- I. All polyurethane components must be MANUFACTURED in the United States in an **ISO 9001:2008 Certified** facility to ensure the highest quality materials.
- J. The CONTRACTOR must have installed a minimum of two (2) Class I IAAF Certified outdoor tracks within the United States.

3.2 Submittals

The following submittals must be received with bid submittal:

- A. Standard printed specifications of the synthetic track surfacing system to be installed on this project.
- B. An affidavit attesting that the synthetic track surfacing material to be installed meets the requirements defined by the manufacturers currently published specifications and any modifications outlined in those technical specifications.
- C. A synthetic track surfacing system sample, 12" x 12" in size, of the same synthetic track surfacing system to be installed on this project.
- D. A list of completed facilities, including the installing supervisor, of the exact synthetic track surfacing system.
- E. A current IAAF Certificate proving the product to be installed meets the current IAAF Performance Standards for Synthetic Surfaced Athletics Tracks (Outdoor).

Part 4 – Materials

4.1 Elastomeric Polyurethane

- A. BEYPUR, the two-component U.V. stabilized elastomeric polyurethane compounded from polyol and isocyanate components, based on one hundred percent (100%) Methylene Diphenyl Isocyanate (MDI). No Toluene Diisocyanate Isocyanate (TDI) will be allowed.
- B. The elastomeric polyurethane shall be red in color.

4.2 EPDM Granulate

- A. The EPDM granulates shall be approximately 1 to 3mm in size
- B. The EPDM granulates and the U.V. stabilized elastomeric polyurethane shall be color matched.

4.3 Rubber Granulate of the base course

- A. Styrene Butadiene Rubber (SBR) processed ground to a graded size of 1-3mm.
- B. A maximum of 82%, by weight of the paved-in-place base layer, of SBR will be allowed.

4.4 Single Component Polyurethane Binder

- A. This binder shall be BEYPUR 300, a single-component polyurethane binder with a long cure time for use in paved mat specifications; a minimum of 18%, by weight of the paved-in-place base layer.

4.5 Seal Coat

- A. This seal coat shall be BEYPUR 200, a two-component polyurethane pore sealer use with paved rubber granule mats. The granular SBR and binder layer shall be sealed with the BEYPUR 200. The application of EPDM dust is not allowed.

4.6 Line Marking Paint

- A. Manufacturers recommended pigmented line paint.

Part 5 – Installation

5.1 Subbase Requirements

- A. Asphalt Compaction
 - a. The Synthetic Track Surfacing System shall be laid on an approved subbase. The General Contractor shall provide compaction test results of 92-96% for the installed subbase and asphalt surface.
 - b. For NCAA certification the following criteria must be followed. The track surface, i.e. asphalt substrate, shall not vary from planned cross

slope by more than +/- 0.2%, with a maximum lateral slope outside to inside of 1%, and a maximum slope of 0.1% in any running direction. The finished asphalt shall not vary under a 10' straight edge more than 1/8".

- c. It should be the responsibility of the asphalt-paving contractor to flood the surface immediately after the asphalt is capable of handling traffic. If, after 20 minutes of drying time, there are birdbaths evident, it shall be the responsibility of the architect, in conjunction with the surfacing contractor, to determine the method of correction. No cold tar patching, skin patching or sand mix patching will be acceptable.

B. Asphalt Quality

- a. No Recycled Asphalt Pavement (RAP) shall be used in the wear course asphalt mix design as the inclusion of RAP as an off-set to virgin asphalt binder results in a brittle hot-mix asphalt (HMA) with significantly lower tensile strength and fatigue resistance. The sports surfacing contractor will not be held responsible for asphalt failures resulting from the inclusion RAP in the HMA mix design of the wear course.
- b. Any oil spills (hydraulic, diesel, motor oil, etc.) must be completely removed, either by chipping out or removing and replacing with new, keyed in asphalt. The minimum depth of any asphalt replacement shall be one inch. The curing time for the asphalt base is 28 days. It shall be the responsibility of the surfacing contractor to determine if the asphalt substrate has cured sufficiently prior to the application of polyurethane surfacing system.

C. Responsibility of Others

- a. It shall be the responsibility of the general contractor to determine if the asphalt substrate meets all design specifications, i.e. cross slopes, planarity and specific project criteria. After all the above conditions are met, the synthetic surfacing contractor must, in writing, accept the planarity of the asphalt receiving base, before work can commence.

5.2 Thickness

- A. The thickness of the **BSS 300** Synthetic Track Surfacing System shall be 13mm.

5.3 Equipment

- A. The **BSS 300** Synthetic Track Surfacing System components shall be processed and installed by specially designed machinery and equipment. A mechanically operated paver with variable regulated speed and thermostatically controlled screed shall be used in the installation of the base mat. The wearing course shall be installed using automatic electronic portioning, which provides continuous mixing and feeding for an accurate, quality controlled installation.
- B. No hand mixing is allowed.

5.4 Installation

A. Base Course

The SBR granules and BEYPUR 300 shall be mixed together on site to regulate the ratio/quantity of SBR, not to exceed 82% in the base mat portion of the system. The BEYPUR 300 shall be mixed with the SBR rubber so that a minimum of 20%, by weight, exists in the final mixture. This mixture is then mechanically installed using the paver.

B. Seal Coat

The two BEYPUR 200 components are mixed at the prescribed ratio homogeneously with a suitable mixing device. The coating is squeegee applied to the base mat, making it impermeable.

C. Wearing Course

The 1 to 3mm EPDM granules shall be integrated into the BEYPUR to achieve the full depth of the 5 mm wearing course. The resilient embedded textured finish shall be a dense matrix of exposed EPDM granules. The homogeneous wearing course shall be applied in situ with the base course.

5.5 Site Conditions

- A. Installation shall not take place if adjacent or concurrent construction generates excessive dust, abrasives or any other by-product that, in the opinion of the installer, would be harmful to the track material, until completion of such works.

- B. Apply Synthetic Track Surfacing in dry weather when pavement and atmospheric temperatures are fifty (50) degrees Fahrenheit or above, and are anticipated to remain above fifty (50) degrees Fahrenheit for twenty-four (24) hours after completing application.
- C. The maximum temperature cannot exceed 105 degrees at any point during a 24 - hour period.
- D. Rain cannot be falling. If there is a threat of rain, work shall cease until dry conditions can be re-established on the track pavement. Work is to proceed only when adequate curing can be guaranteed by the manufacturer.

Part 6 – Line Striping and Event Markings

6.1 Layout

- A. Line striping and event markings shall be laid out in accordance with current IAAF and NCAA rules.

6.2 Certification

- A. Upon completion of the installation, the owner shall be supplied with all necessary computations and drawings as well as a letter of certification attesting to the accuracy of the markings.

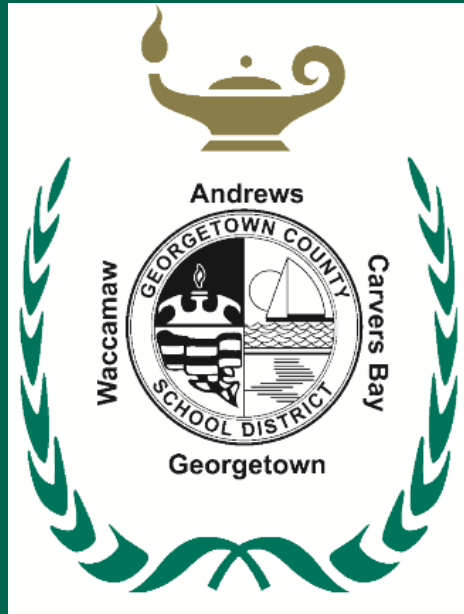
Part 7 – Guarantee

- A. The BSS 300 Synthetic Track Surfacing System shall be fully guaranteed against faulty workmanship and material failure for a period of five (5) years from the date of acceptance.
- B. Synthetic surfacing material found to be defective as a result of faulty workmanship and/or material failure shall be replaced or repaired at no charge, upon written notification within the guarantee period.

END OF SECTION

MONTHLY PROGRESS REPORT

December 2017



GEORGETOWN COUNTY

School District



M. B. KAHN / CONSTRUCTION MANAGEMENT DIVISION
P. O. Box 1179 / Columbia, SC 29202
Phone 803 / 736-2950

Overall Program:

The 2016 Local Bond Referendum provided Georgetown County School District with approximately \$165 million in funding for additions and renovations of existing public school buildings. Included in that referendum are additions to each of the High Schools of an auxiliary gymnasium, tennis courts, upgrades to the running track surface, general renovation work, as well as, required maintenance mainly related to roofing and HVAC improvements. Improvements to the Middle and Elementary Schools include one auxiliary gymnasium, expansions to several dining areas, general renovation work and required maintenance including roofing and HVAC improvements.

Design and Pre-Construction Status:

Design work continues on all four High Schools and Waccamaw Intermediate School. Design Development drawings have been received on Waccamaw High School with the other four projects scheduled to deliver the Design Development drawings before the Christmas break. The Schematic Design is currently in progress on the Howard Adult Center.

All of the land and underground survey work has been completed. The Geotechnical Report for Waccamaw High School has been completed with Georgetown High School and Waccamaw Intermediate School scheduled to be completed this month. Andrews and Carvers Bay High Schools are scheduled to have the Geotechnical Reports completed in January.

Engineering for the asphalt work on the running tracks for Andrews High and Carvers Bay High Schools are being completed. We anticipate this work being bid in early January.

All five of the Construction Management at Risk firms are currently working on the program. Kick-off meetings have been held with four of the firms, with the fifth scheduled for this week.

Approvals and Bid Status:

Bids were received for the running track polyurethane surface. The cost is within budget although only one bid was received.

Construction Status:

The asphalt work for the running tracks at Georgetown and Waccamaw High Schools was awarded in October. The milling work was completed in early November with the paving scheduled to be completed the last week in November.

Other Issues:

No other issues at this time.



Andrews High School

**Architect: AAG
Architectural Group**

Scope of work includes the addition of an auxiliary gymnasium, expansion of the welding and small engine repair shops, resurfacing of the running track, upgrades to the athletic fields, general renovations as well as required maintenance items including HVAC upgrades and a new fire alarm system

Status

The schematic drawings for the athletic area were reviewed in early November with the District Staff. Several revisions were made to those drawings and they were re-issued in mid November. Design work has continued on the main campus with Design Development drawings scheduled to be delivered this week.

The Civil Engineer is now scheduled to complete Design work for the running track asphalt package this week.

EDCON from Peak, South Carolina, is the Construction Manager for this project.

Schedule



 Progress to Date



Carvers Bay High School

**Architect: UWPD
Architecture**

Scope of work includes the addition of an auxiliary gymnasium, expansion of the wood shop, resurfacing of the running track, tennis courts, upgrades to the athletic fields, general renovations as well as required maintenance items including HVAC upgrades and a new fire alarm system

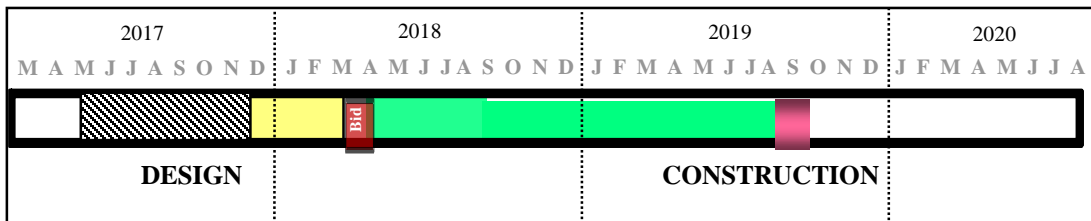
Status

The Design Development drawings were scheduled to be delivered by December 15th, however that date may slip a week due to the death of an immediate family member of our Architect. We do not believe this will be detrimental to the program schedule as we would not want to bid all projects at the same time. These projects will need to be appropriately scheduled apart during the bid phase, with adequate bid time for each.

The Civil Engineer is working on the design of the running track. The existing track surface is too long and has required some extensive work at one end of the track to correct this issue.

H. G. Reynolds from Aiken, South Carolina, is the Construction Manager for this project.

Schedule



 Progress to Date



Georgetown High School

**Architect: Goforth,
 Brown and Associates**

Scope of work includes the addition of an auxiliary gymnasium, expansion of the welding shop and dining area, renovation of the media center, resurfacing of the running track, tennis courts, upgrades to the athletic fields, general renovations as well as required maintenance items including HVAC upgrades

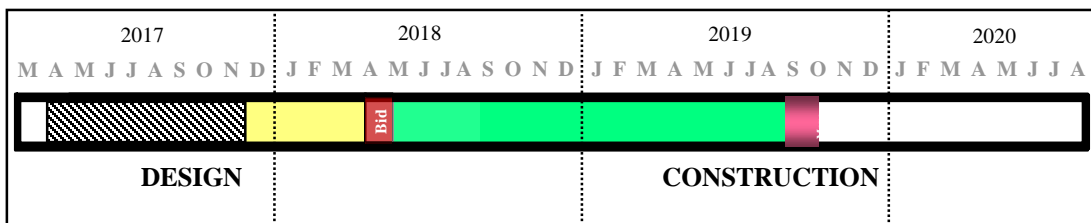
Status

Design Development drawings for the Architectural portion of the work have been received and the Construction Manager is currently working on that estimate. The Mechanical and Electrical drawings have been delayed slightly as a change in the mechanical engineer was made last month. We are still working through some code issues with this project, but we appear to have addressed the most significant issues. This is the most complex project we have and will be the most challenging to both design and build.

The asphalt portion of the running track is nearing completion. The milling operation was completed in early November, with the paving scheduled to be completed by the end of November.

Thompson Turner Construction from Sumter, South Carolina, is the Construction Manager for this project.

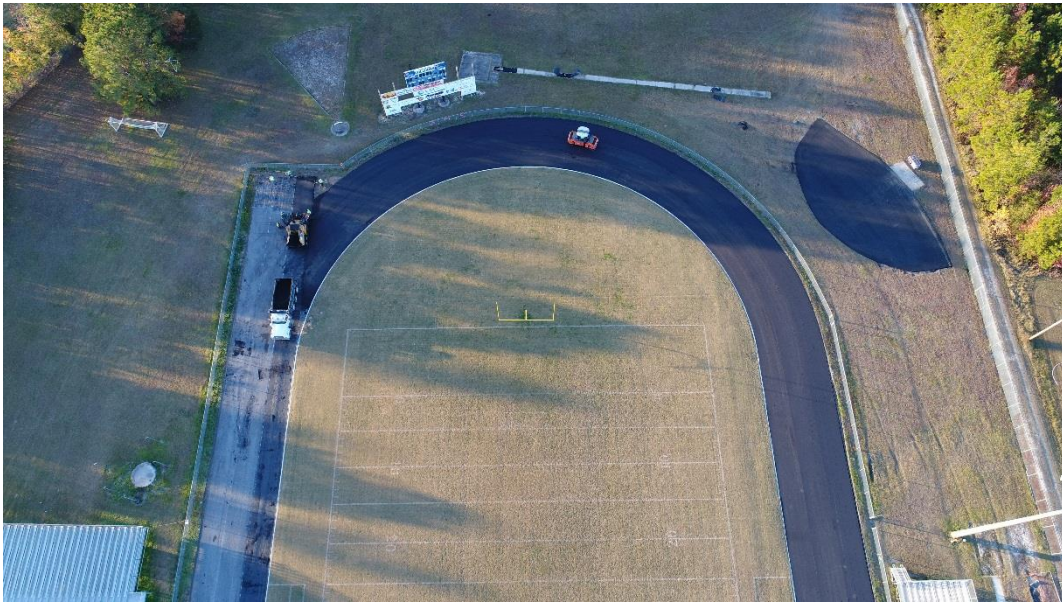
Schedule



 Progress to Date

Georgetown High School

**Architect: Goforth,
Brown and Associates**



Paving operations on November 29, 2017



Waccamaw High School

**Architect: Stubbs
Muldrow Herin
architects**

Scope of work includes the addition of an auxiliary gymnasium, new science labs, a distance learning lab, upgraded Chorus facility, resurfacing of the running track, tennis courts, upgrades to the athletic fields, general renovations as well as required maintenance items including HVAC upgrades

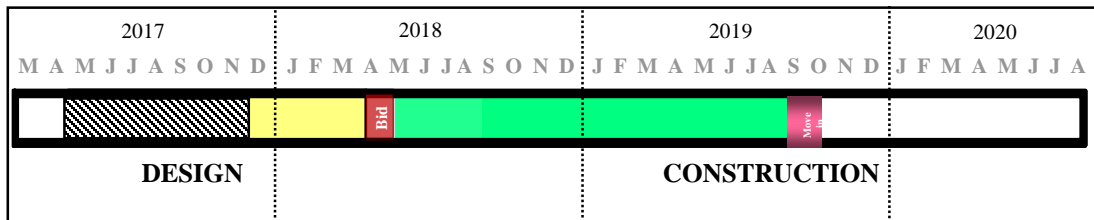
Status


The Design Development drawings have been received and are currently being reviewed by the Construction Manager, Contract Construction, and MB Kahn. The completed design package is scheduled to be ready by the end of February 2018.

The asphalt package for the running track was awarded in October. The milling operation was completed in early November with the paving scheduled to be completed by the end of November or first week in December. We have uncovered the drainage lines for the track and determined we need to add three junction boxes to allow the system to be cleaned on a regular basis. Once these new junction boxes are installed, the system will be water jetted to clear the current blockages.

Contract Construction from Ballentine, South Carolina, is the Construction Manager for this project.

Schedule



 Progress to Date



Waccamaw Intermediate School

Architect: SGA Architecture

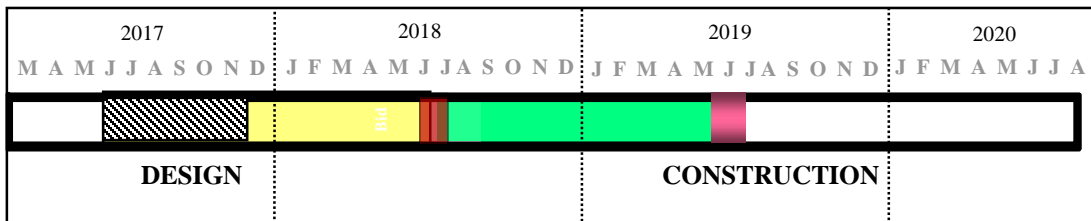
Scope of work includes the addition of an auxiliary gymnasium, a new band room, general renovations as well as required maintenance items including HVAC upgrades

Status

The Design Development drawings for this project are scheduled to be delivered in mid December. Presently there are no issues on this project.

FBI Construction from Florence, South Carolina, is the Construction Manager for this project.

Schedule



 Progress to Date



**Kensington Elementary
School**

**Architect: WM
Building Envelope**

Scope of work includes roof replacement of the fifth grade wing and the media center area.

Status

All of the roofing has been completed. We are in the process of completing the close out documents and closing out this portion of the project.

Schedule



Progress to Date



Howard Adult Center

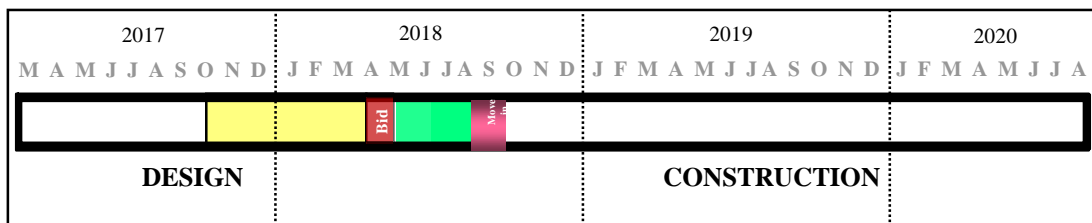
Architect: Red Iron Architects

Scope of work includes new HVAC system, window replacement, group restrooms upfit and door hardware.

Status

Red Iron Architects is currently working on the schematic drawings for this project. A Construction Manager had not been selected for this project at this time.

Schedule



 Progress to Date

Program Cost Summary

Group Headings Description	Contracts Awarded	Approved C.O.'s	Total Committed	Current Contingency	Approved Budget	Completed to Date
Project Name						
99901 Andrews ES	\$0		\$0	\$6,967,000	\$6,967,000	\$0
99902 Brown's Ferry ES	\$62,617		\$62,617	\$3,689,383	\$3,752,000	\$0
99903 Kensington ES	\$393,745		\$393,745	\$5,196,255	\$5,590,000	\$293,908
99904 Maryville ES	\$70,069		\$70,069	\$4,897,931	\$4,968,000	\$0
99905 McDonald ES	\$88,362		\$88,362	\$4,405,638	\$4,494,000	\$0
99906 Plantersville ES	\$47,693		\$47,693	\$3,850,307	\$3,898,000	\$0
99907 Pleasant Hill ES	\$0		\$0	\$4,028,000	\$4,028,000	\$0
99908 Sampit ES	\$104,770		\$104,770	\$5,803,230	\$5,908,000	\$24,211
99909 Waccamaw ES	\$0		\$0	\$4,524,000	\$4,524,000	\$0
99910 Waccamaw IM	\$458,082	\$2,895	\$460,977	\$6,666,023	\$7,127,000	\$153,125
99911 Carvers Bay MS	\$87,755		\$87,755	\$5,010,245	\$5,098,000	\$0
99912 Georgetown MS	\$134,381		\$134,381	\$9,871,619	\$10,006,000	\$0
99913 Rosemary MS	\$111,098		\$111,098	\$5,334,902	\$5,446,000	\$2,400
99914 Waccamaw MS	\$97,091	\$4,246	\$101,338	\$4,613,662	\$4,715,000	\$6,882
99915 Andrews HS	\$1,255,183	\$4,650	\$1,259,833	\$12,806,168	\$14,066,001	\$335,904
99916 Carvers Bay HS	\$1,073,957	\$3,815	\$1,077,772	\$10,610,229	\$11,688,000	\$294,622
99917 Georgetown HS	\$1,410,857	\$10,350	\$1,421,207	\$14,891,794	\$16,313,000	\$374,149
99918 Waccamaw HS	\$1,112,828	\$5,500	\$1,118,328	\$9,977,673	\$11,096,000	\$329,514
99919 Howard Adult Ctr.	\$68,125		\$68,125	\$2,195,875	\$2,264,000	\$0
99920 Facility Shops	\$0		\$0	\$4,845,000	\$4,845,000	\$0
99921 Mike Johnson Field	\$0		\$0	\$582,000	\$582,000	\$0
99922 J.B. Beck Adm. Ctr.	\$0		\$0	\$4,814,000	\$4,814,000	\$0
99923 Coastal Mont. Chr.	\$378,923		\$378,923	\$421,077	\$800,000	\$378,923
99924 Adv. Manf. Ctr.	\$0		\$0	\$2,000,000	\$2,000,000	\$0
99925 Technology	\$1,835,402		\$1,835,402	\$17,269,598	\$19,105,000	\$1,292,697
ADMIN	\$147,356		\$147,356	\$758,647	\$906,003	\$147,356
Total	\$8,938,292	\$31,456	\$8,969,749	\$156,030,255	\$165,000,004	\$3,633,690