

PARKING OPTIONS AT CENTRAL OFFICE
Greeneville City Schools
129 W. Depot Street, Greeneville, TN 37743

- 1. Towne Square Shopping Center** – spaces away from the stores marked with yellow paint are available with unlimited hours. This tag is required. **Please do not park in front of a store ...see attached photo. If you park in front of a business, or in the first row away from a business, your vehicle will be towed without notice.**
- 2. Paved parking lot beside the building – 5 visitor spaces** – marked “GCS Visitor”. This tag is required. All other spaces are reserved.

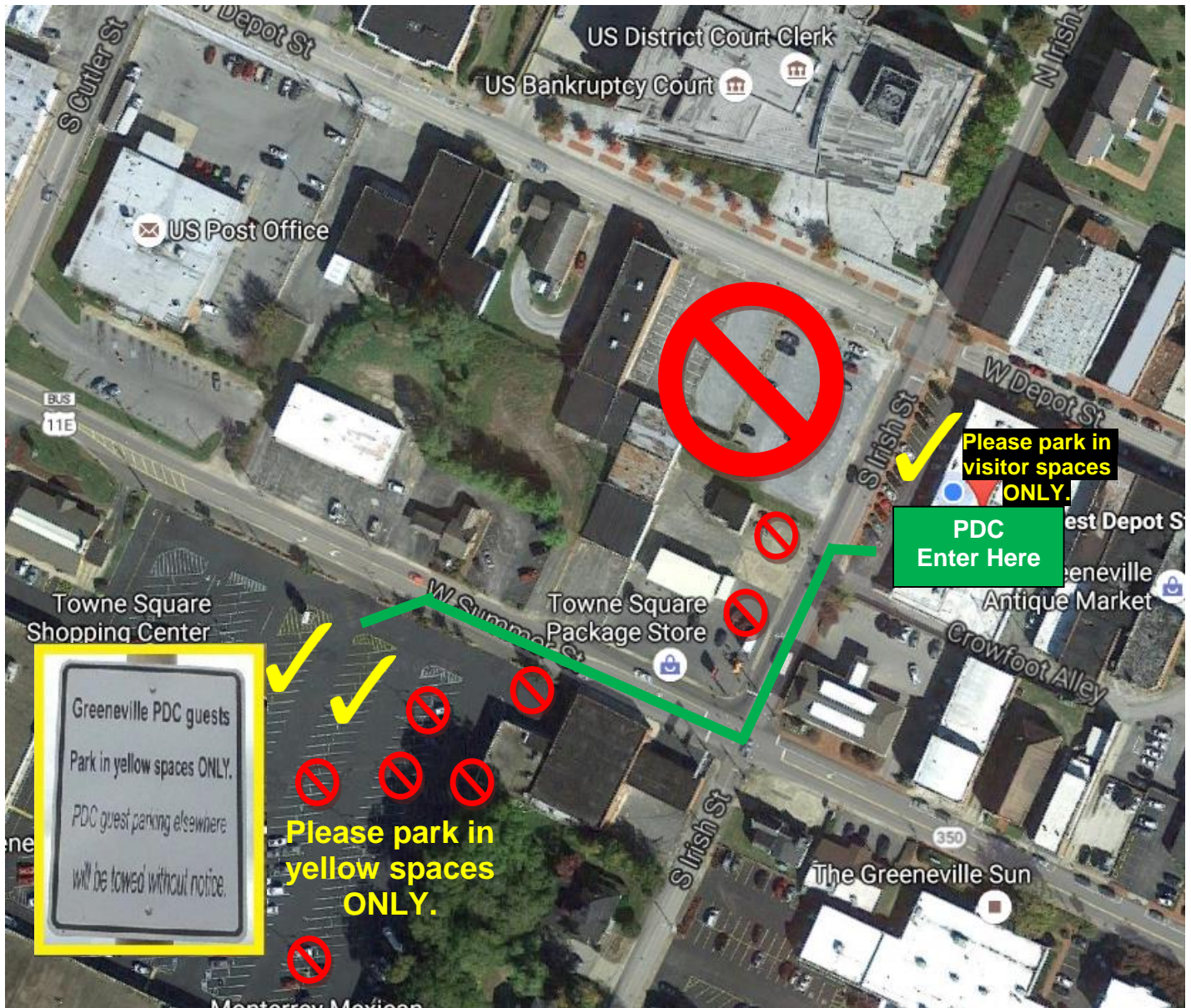
If you are coming to a meeting at the Central Office, your best option is to park in the Towne Square Shopping Center lot. Please be sure to choose a parking space NOT in front of one of the vendors. See attached photo and towing policy.

DO NOT use the pass below to park in the gravel parking lot across the street. If you do not use special hanging parking tag from Nicole Wagner, you will receive a parking ticket from the Greeneville Parking Authority. **DO NOT** park in front of any vendors and/or businesses.

Temporary Parking Permit

Jan. – December 2017





This is an aerial photograph of downtown Greenville showing our Central Office and the Towne Square Shopping Center. If you choose to park at Towne Square, please support our effort to be good neighbors by parking in the spaces painted **with yellow paint ONLY.**

If you park in front of a business, or in the first row across a traffic lane from a business, your vehicle will be towed without notice.

Nicole Wagner
Professional Development Center Coordinator
Nicole.Wagner@gcschools.net
423-787-8014