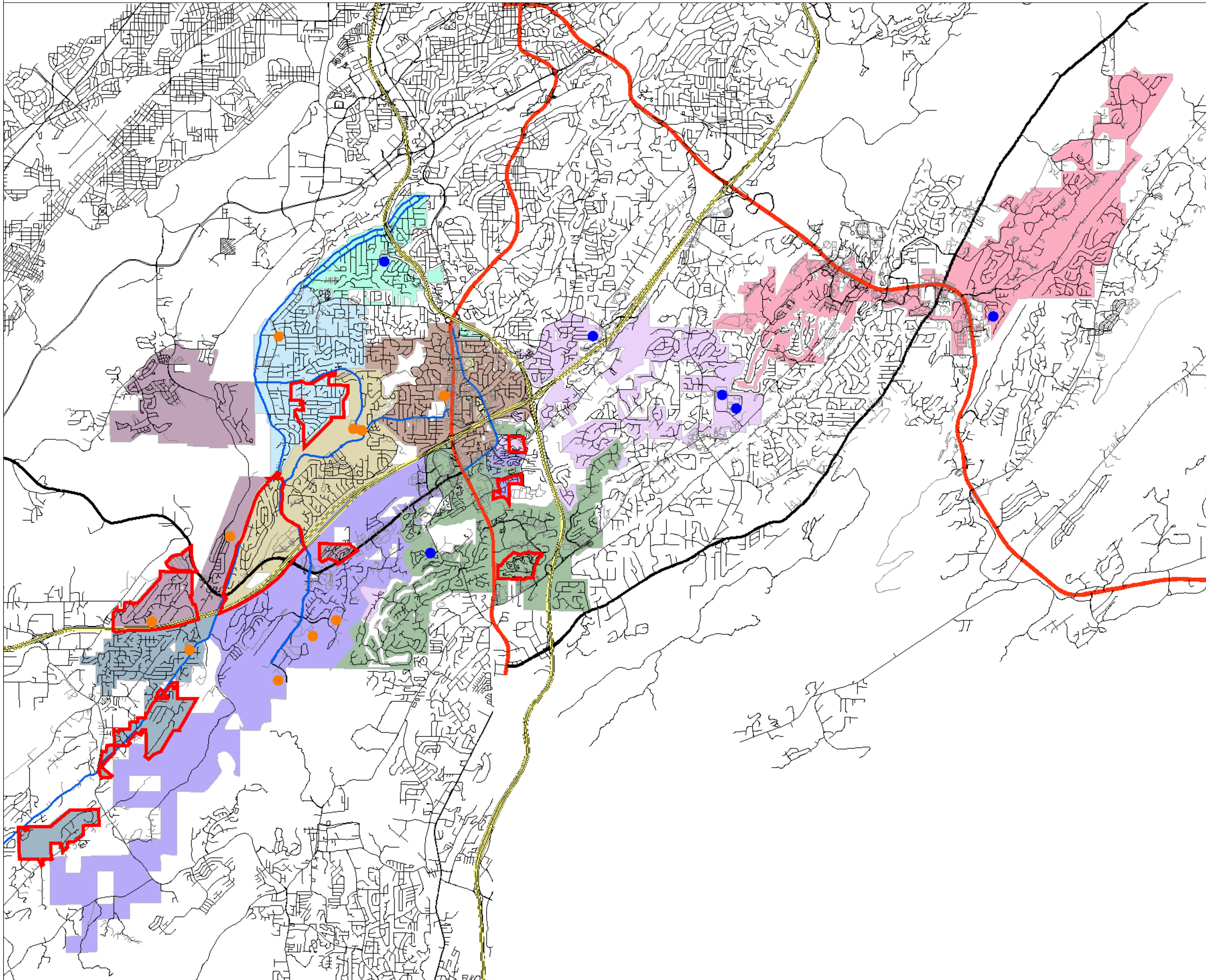
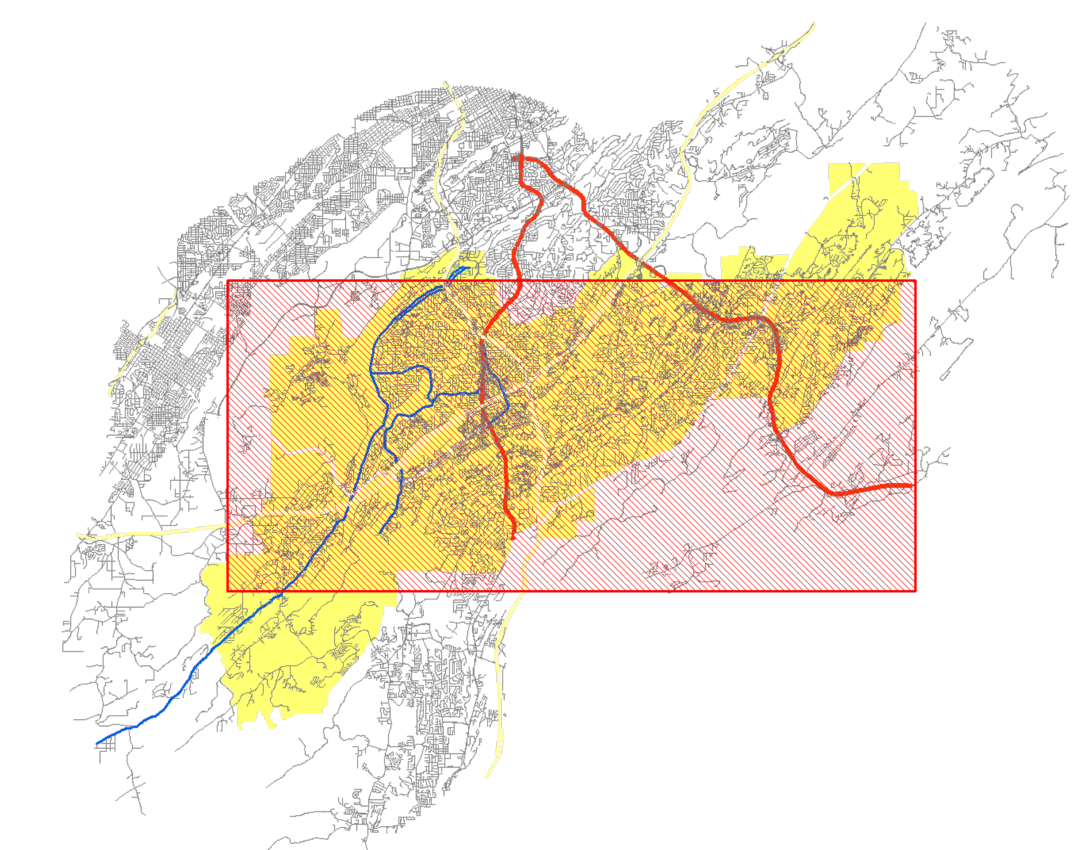


# Overview - Proposed Areas Reassigned

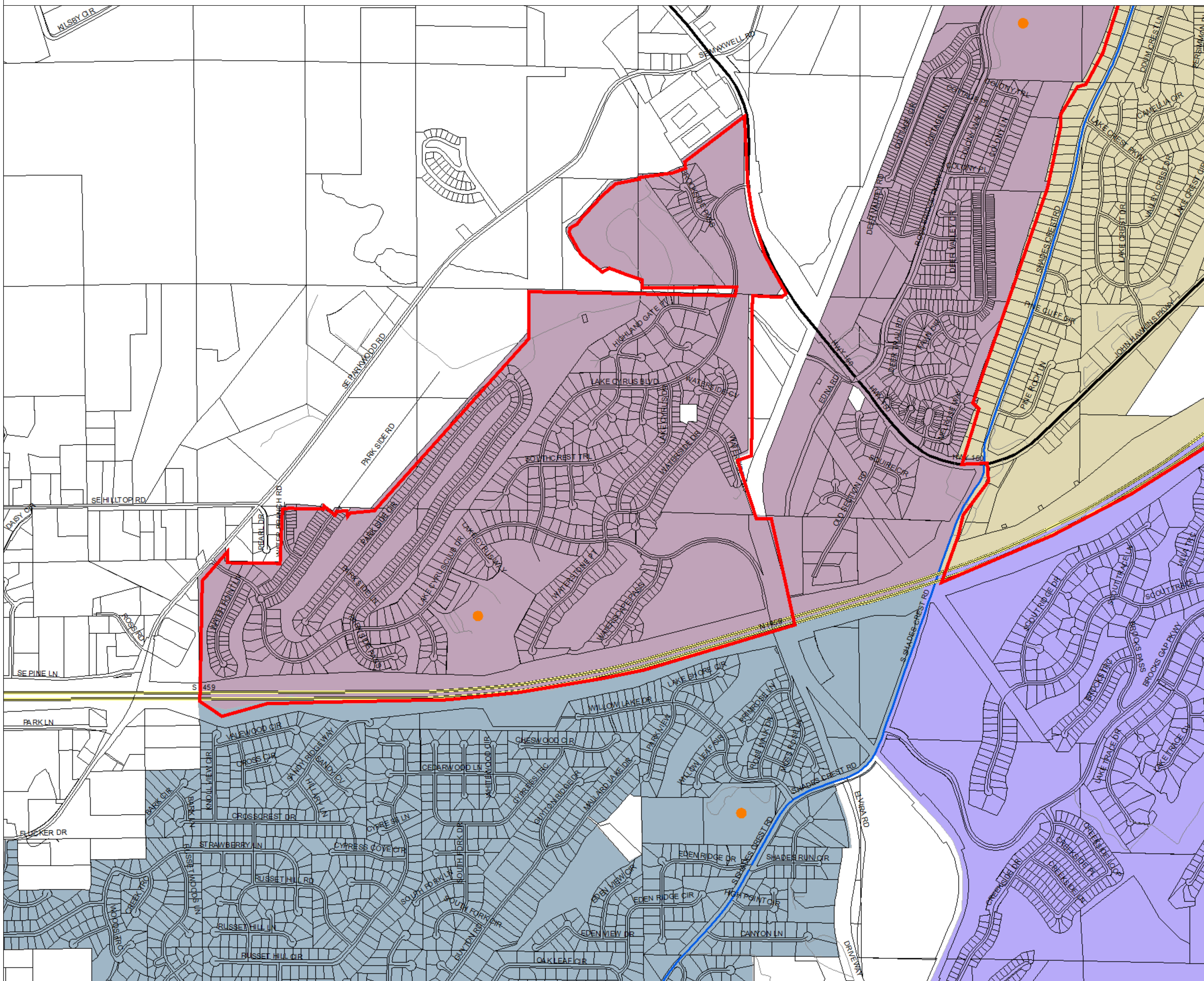


- Streets
- ROAD\_CLASS
  - U.S. HIGHWAY
  - Local
  - COUNTY RD
  - INTERSTATE
  - STATE RD
  - US HIGHWAY
  - 4
- Elementary School Zones
- Bluff Park
  - Deer Valley
  - Green Valley
  - Greystone
  - Owin
  - Riverchase
  - Rocky Ridge
  - Shades Mountain
  - South Shades Crest
  - Trace Crossings

2,000 ft

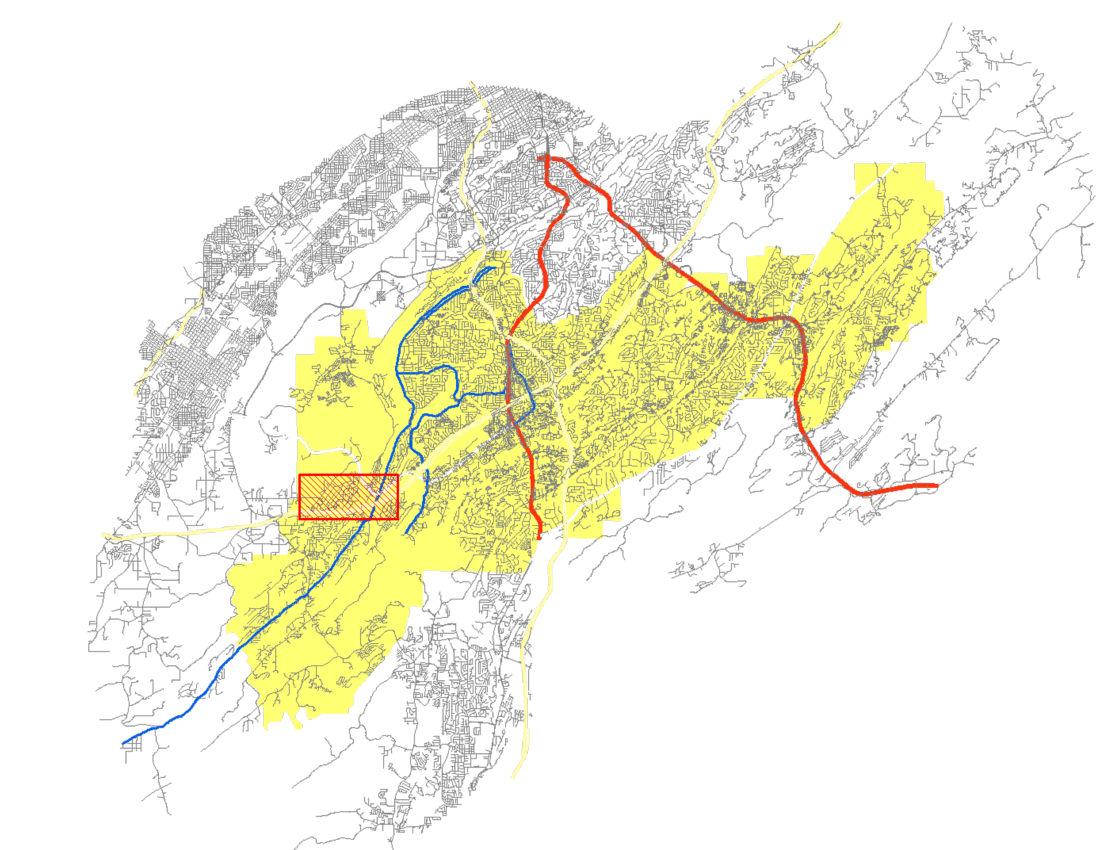


# Attachment 1

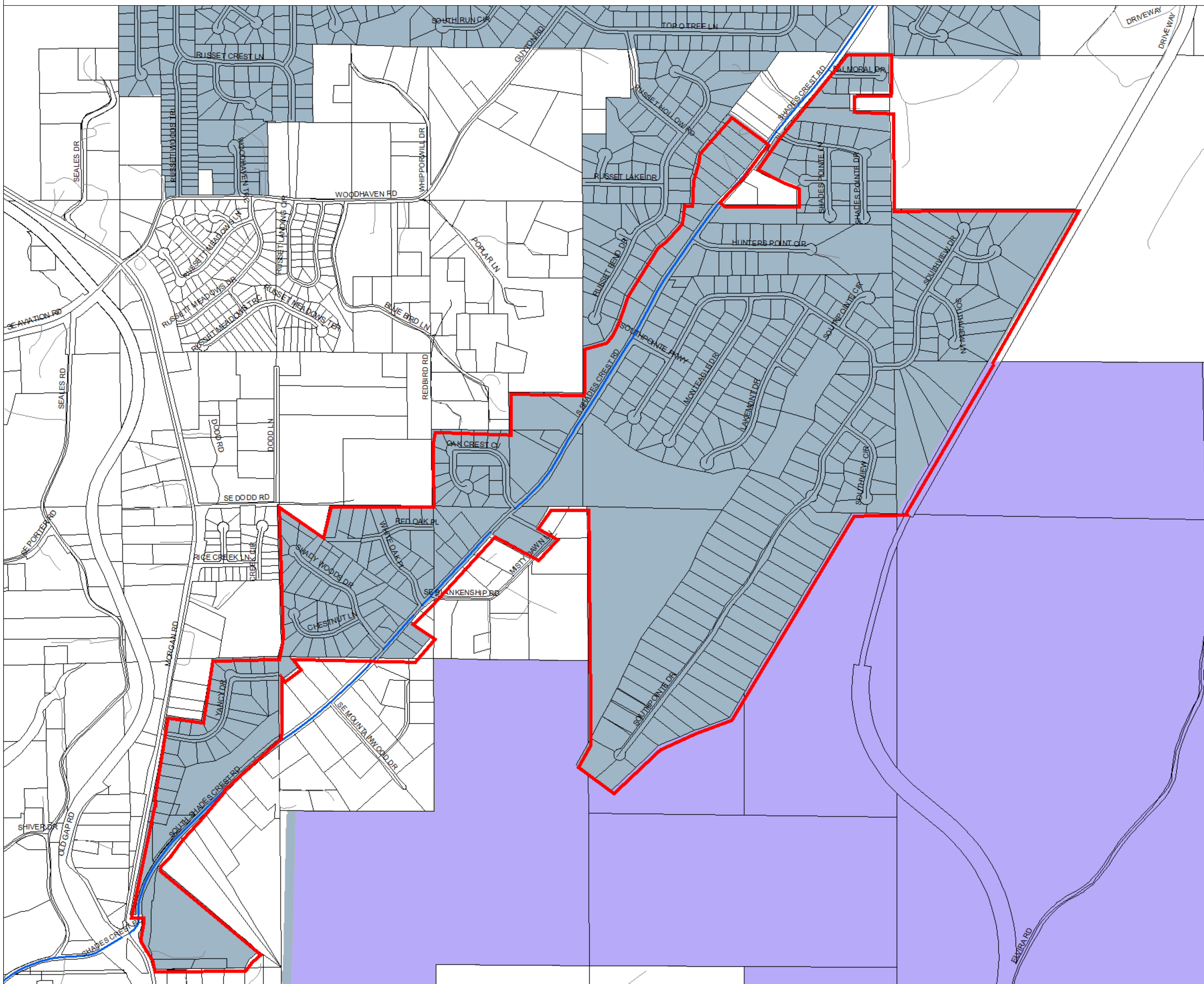


- Streets
- ROAD\_CLASS
  - U.S. HIGHWAY
  - Local
  - COUNTY RD
  - INTERSTATE
  - STATE RD
  - US HIGHWAY
  - 4
- Parcels
- Elementary School Zones
- Bluff Park
  - Deer Valley
  - Green Valley
  - Greystone
  - Owin
  - Riverchase
  - Rocky Ridge
  - Shades Mountain
  - South Shades Crest
  - Trace Crossings

22711

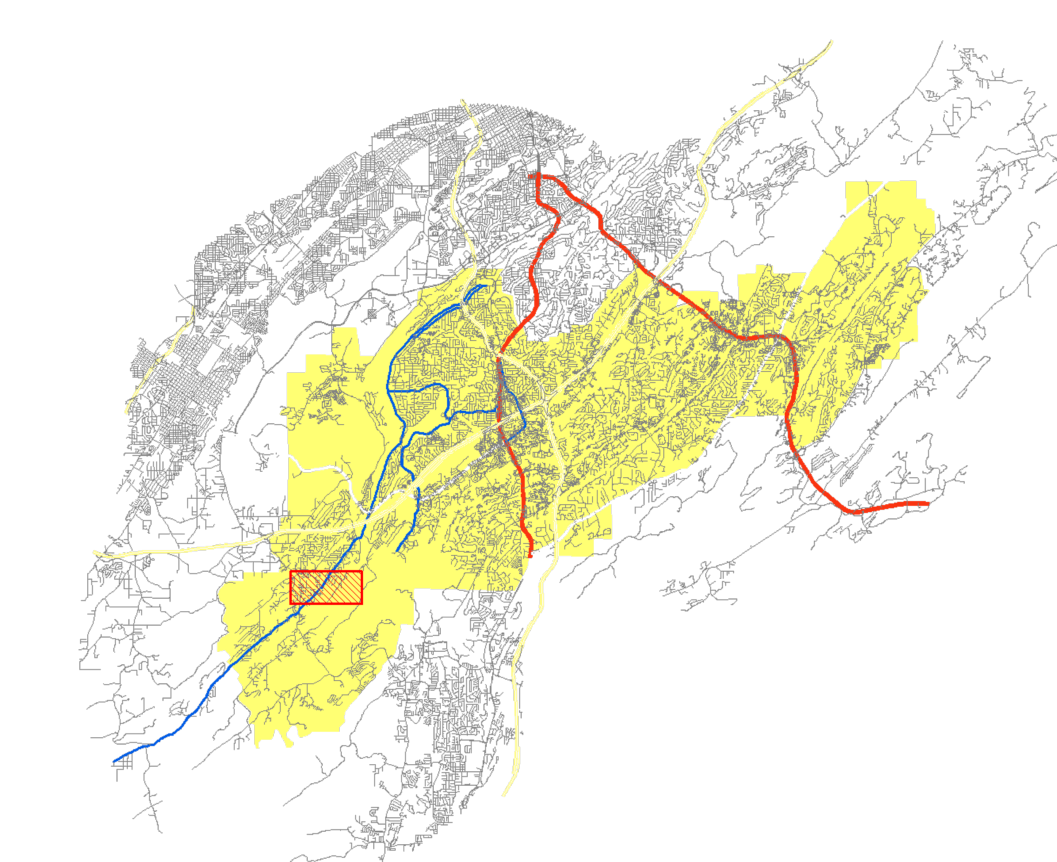


# Attachment 2

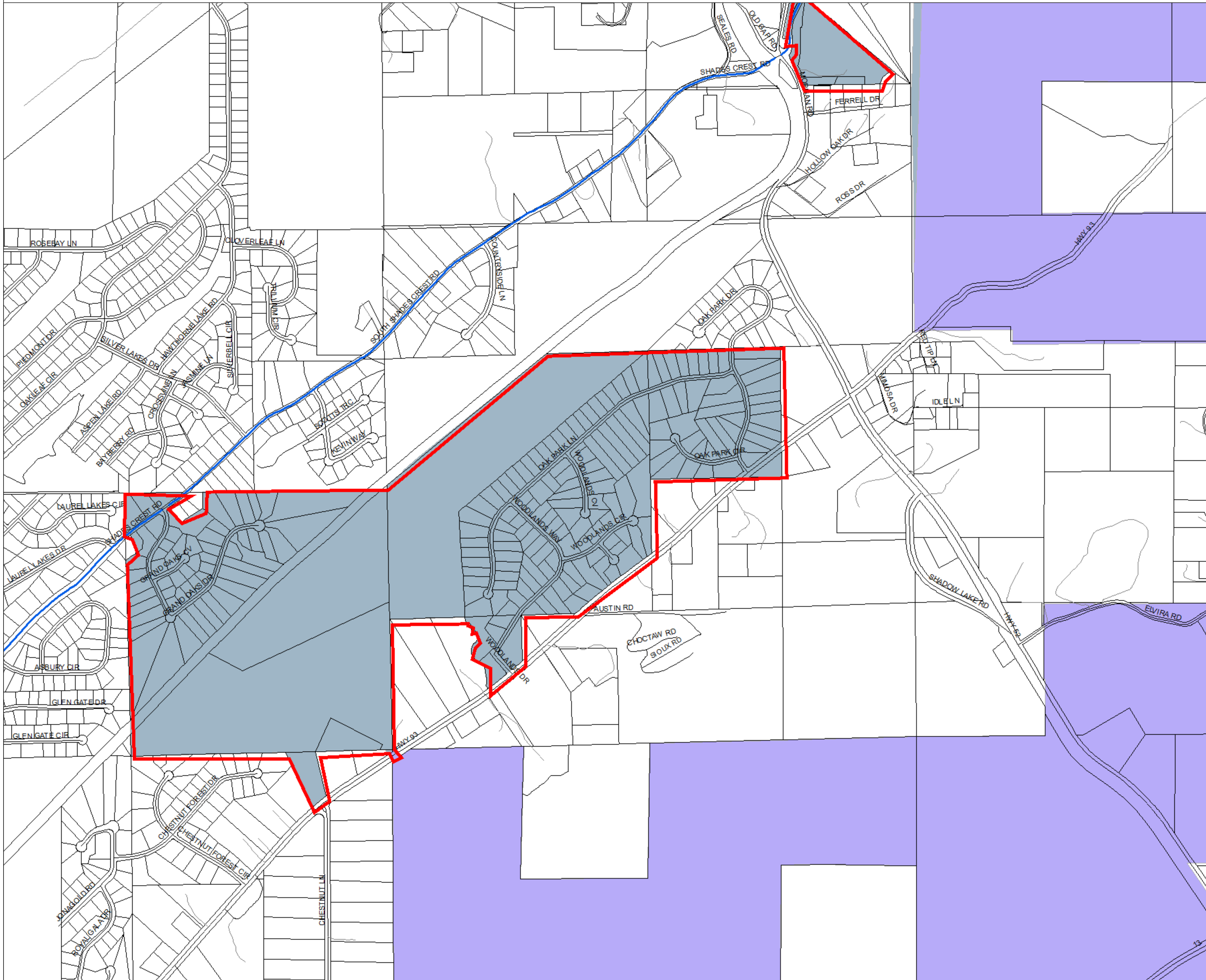


- Streets
- ROAD\_CLASS
  - U.S. HIGHWAY
  - Local
  - COUNTY RD
  - INTERSTATE
  - STATE RD
  - US HIGHWAY
  - 4
- Parcels
- Elementary School Zones
- Bluff Park
  - Deer Valley
  - Green Valley
  - Greystone
  - Owin
  - Riverchase
  - Rocky Ridge
  - Shades Mountain
  - South Shades Crest
  - Trace Crossings

300'

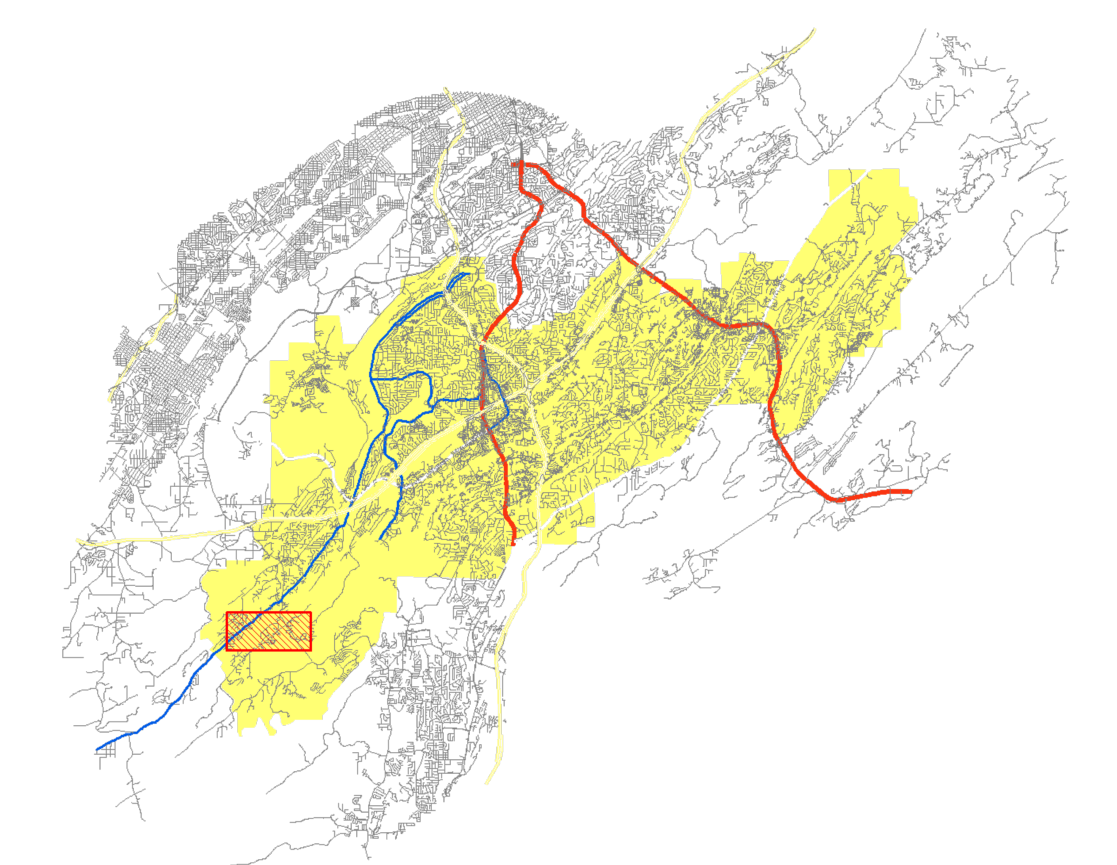


# Attachment 3

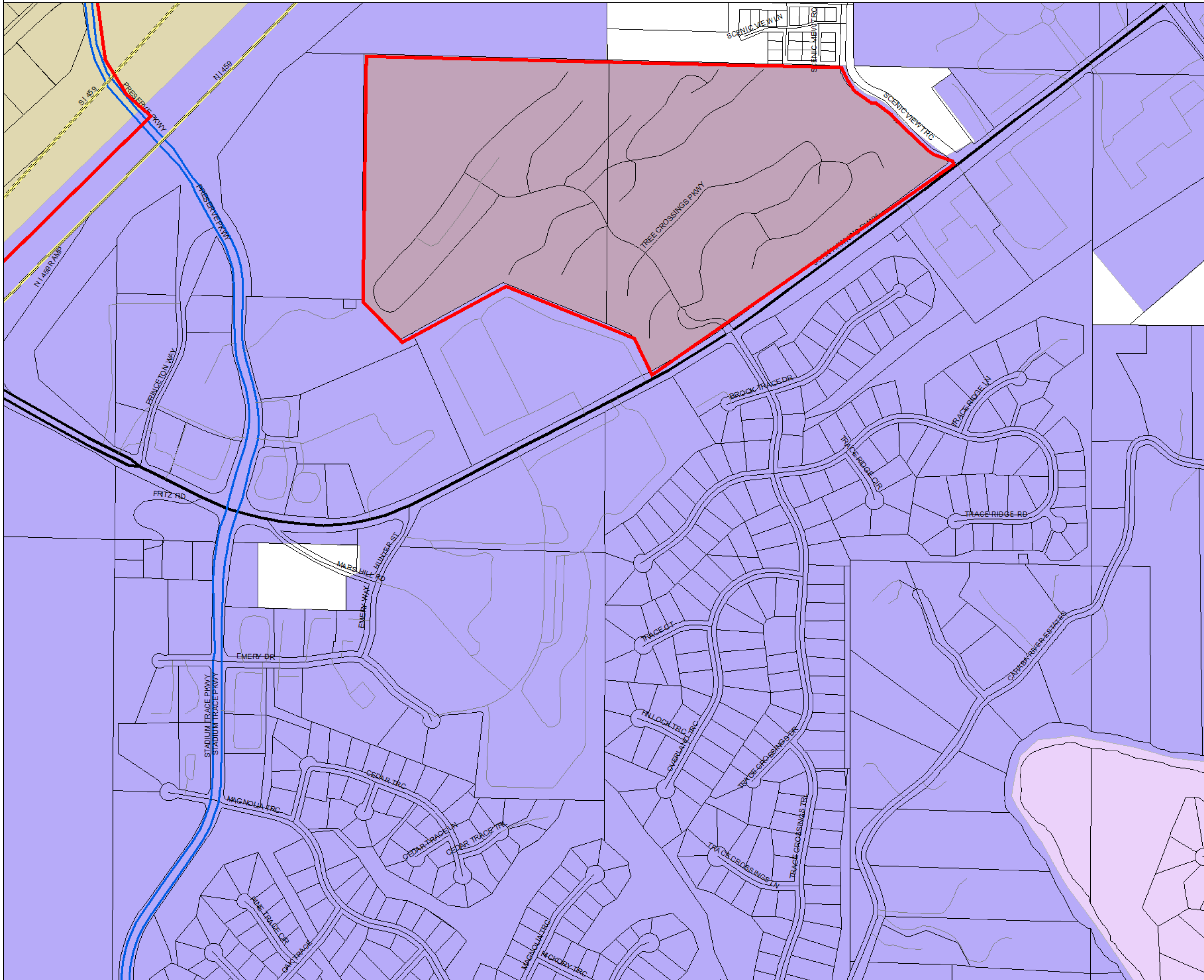


- Streets
- ROAD\_CLASS
- U.S. HIGHWAY
- Local
- COUNTY RD
- INTERSTATE
- STATE RD
- US HIGHWAY
- 4
- Parcels
- Elementary School Zones
- Bluff Park
- Deer Valley
- Green Valley
- Greystone
- Gwin
- Riverchase
- Rocky Ridge
- Shades Mountain
- South Shades Crest
- Trace Crossings

Scale

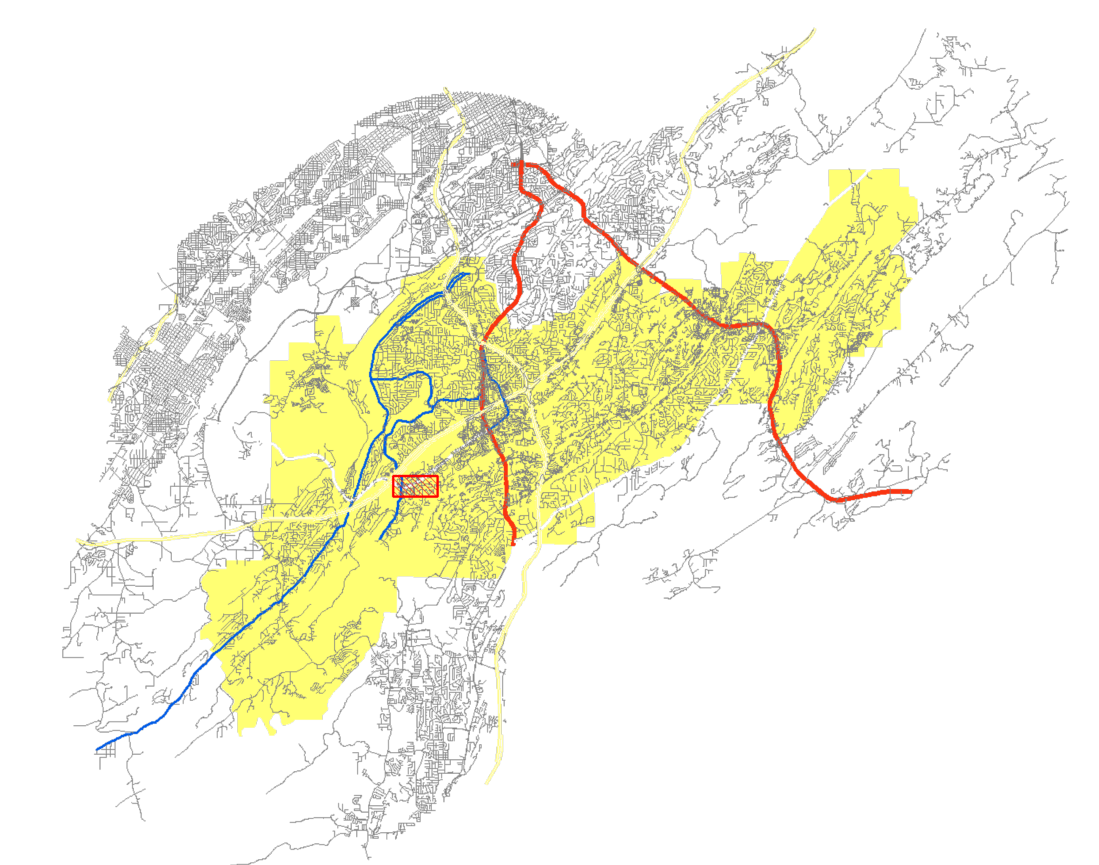


# Attachment 4

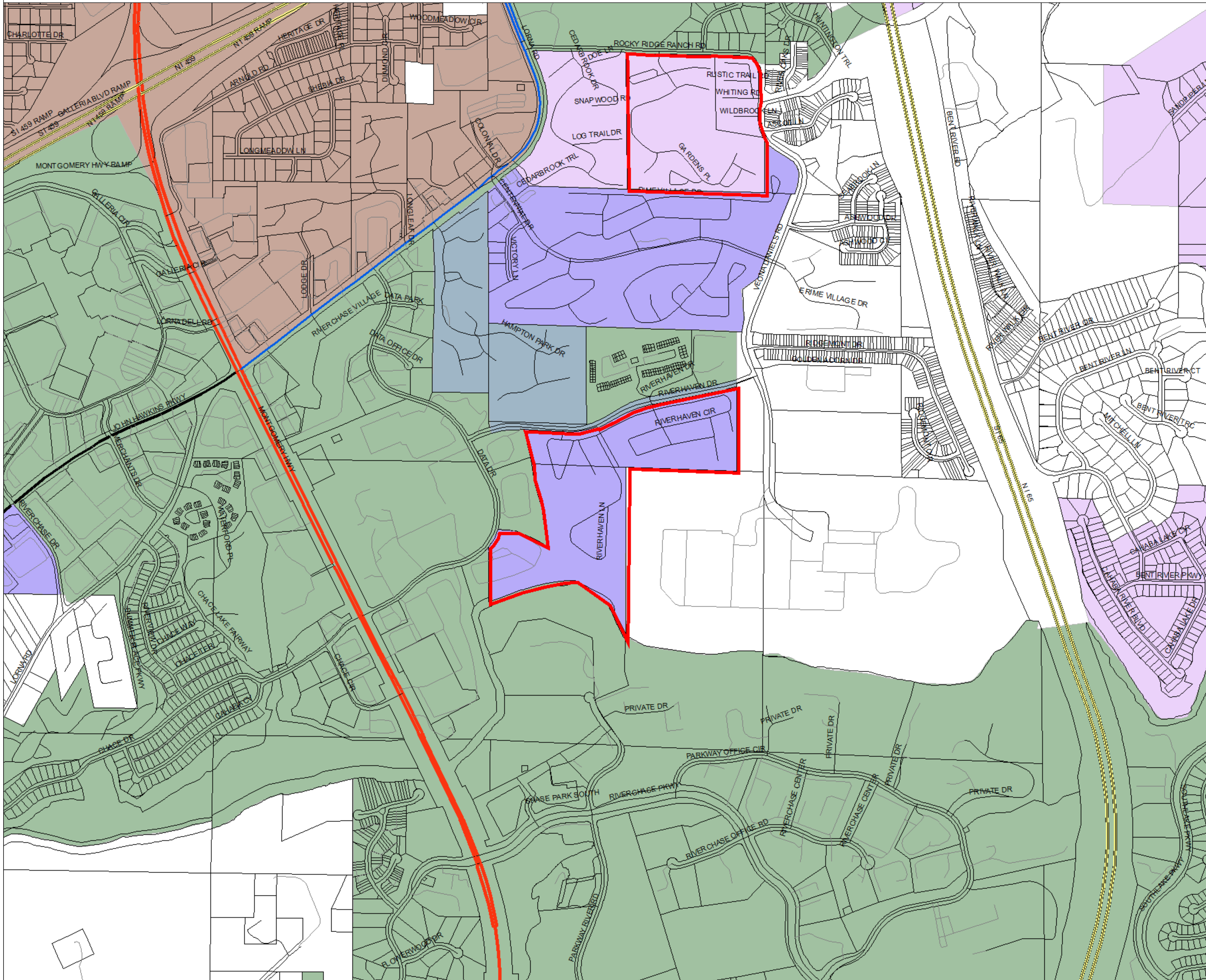


- Streets
- ROAD\_CLASS
  - U.S. HIGHWAY
  - Local
  - COUNTY RD
  - INTERSTATE
  - STATE RD
  - US HIGHWAY
  - 4
- Parcels
- Elementary School Zones
- Bluff Park
  - Deer Valley
  - Green Valley
  - Greystone
  - Owin
  - Riverchase
  - Rocky Ridge
  - Shades Mountain
  - South Shades Crest
  - Trace Crossings

1991

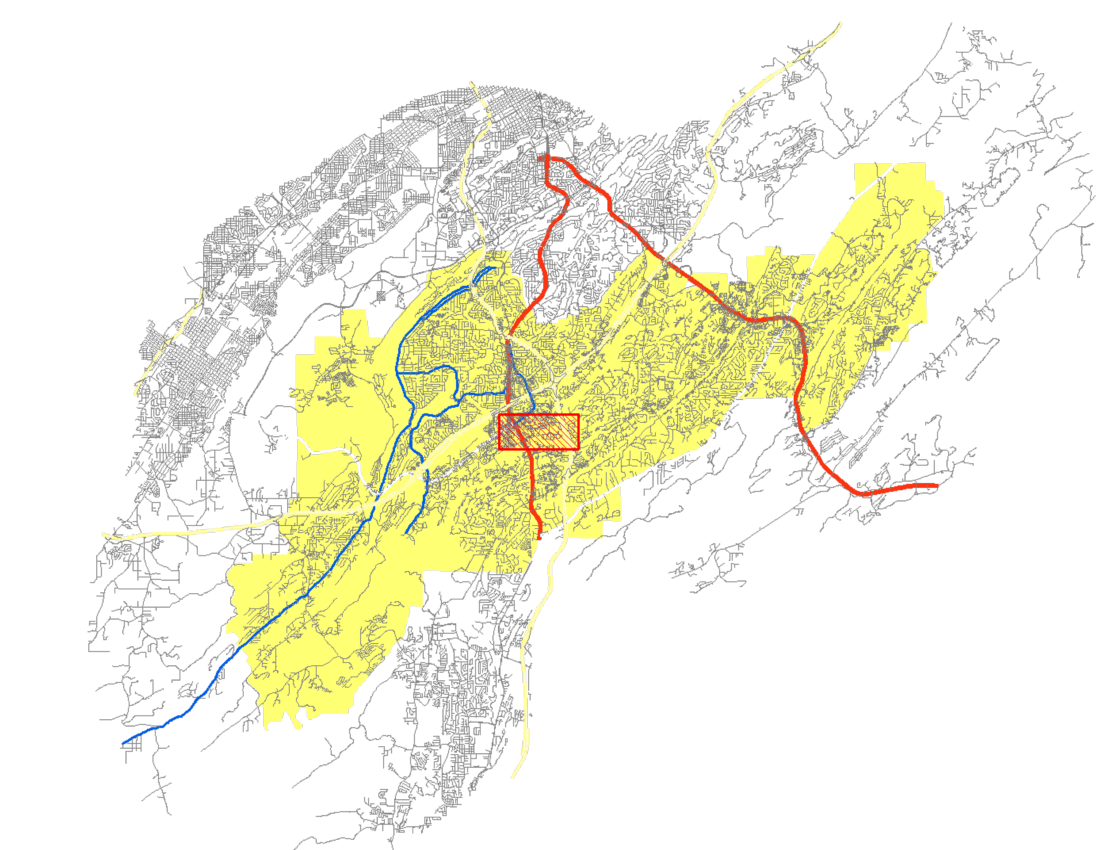


# Attachment 5

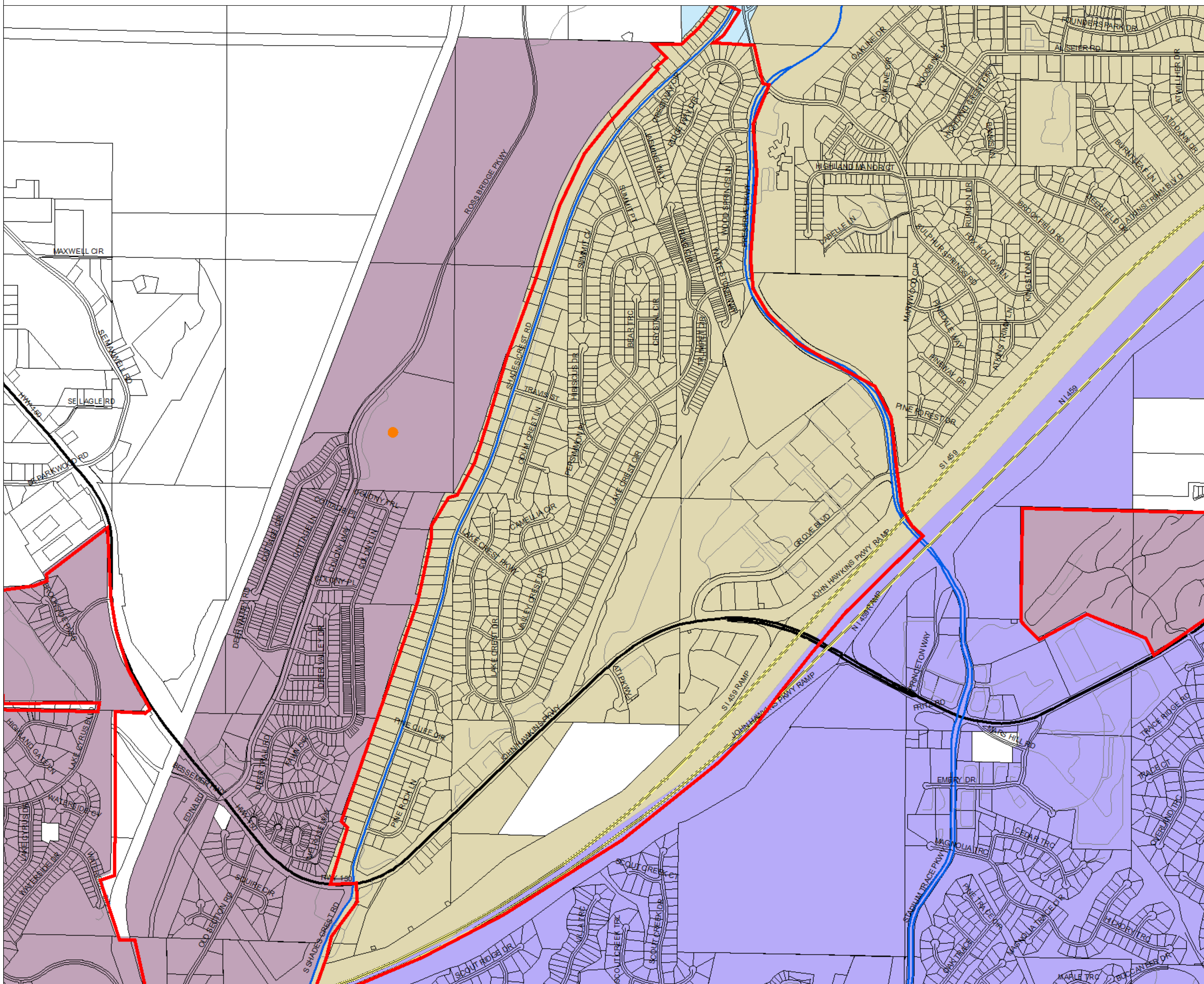


- Streets
  - ROAD\_CLASS
    - U.S. HIGHWAY
    - Local
    - COUNTY RD
    - INTERSTATE
    - STATE RD
    - US HIGHWAY
    - 4
- Parcels
- Elementary School Zones
  - Bluff Park
  - Deer Valley
  - Green Valley
  - Greystone
  - Gwin
  - Riverchase
  - Rocky Ridge
  - Shades Mountain
  - South Shades Crest
  - Trace Crossings

5/2/11

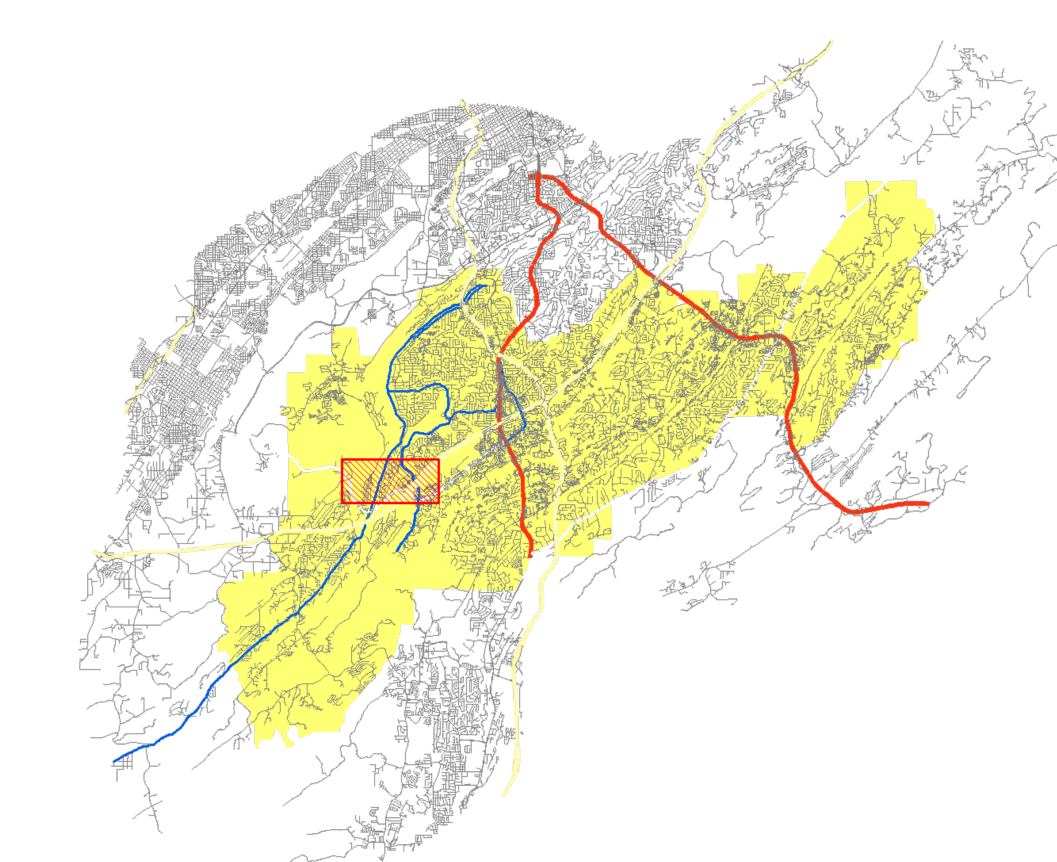


# Attachment 6

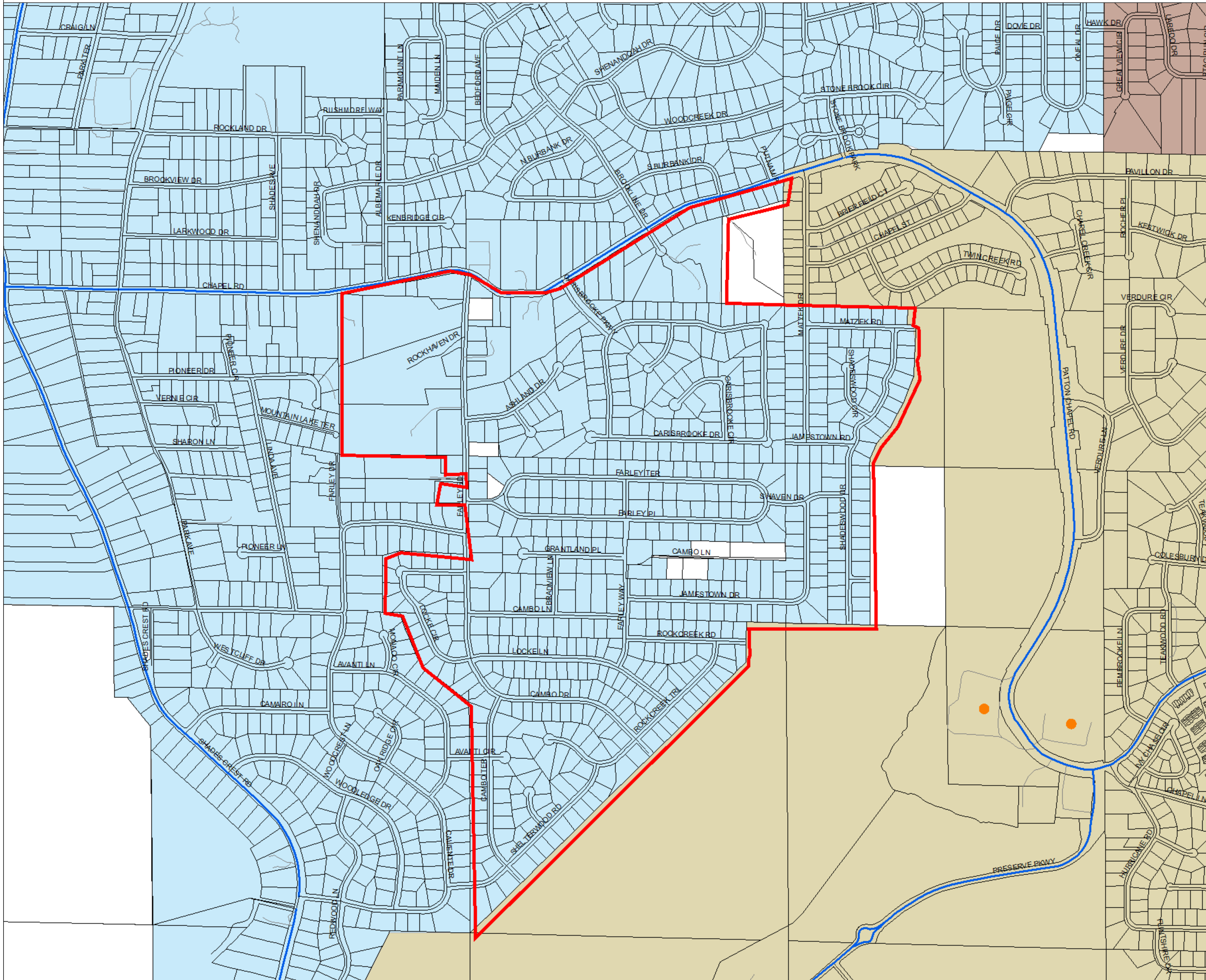


- Streets
- ROAD\_CLASS
  - U.S. HIGHWAY
  - Local
  - COUNTY RD
  - INTERSTATE
  - STATE RD
  - US HIGHWAY
  - 4
- Parcels
- Elementary School Zones
- Elementary Schools
  - Bluff Park
  - Deer Valley
  - Green Valley
  - Greystone
  - Gwin
  - Riverchase
  - Rocky Ridge
  - Shades Mountain
  - South Shades Crest
  - Trace Crossings

2011

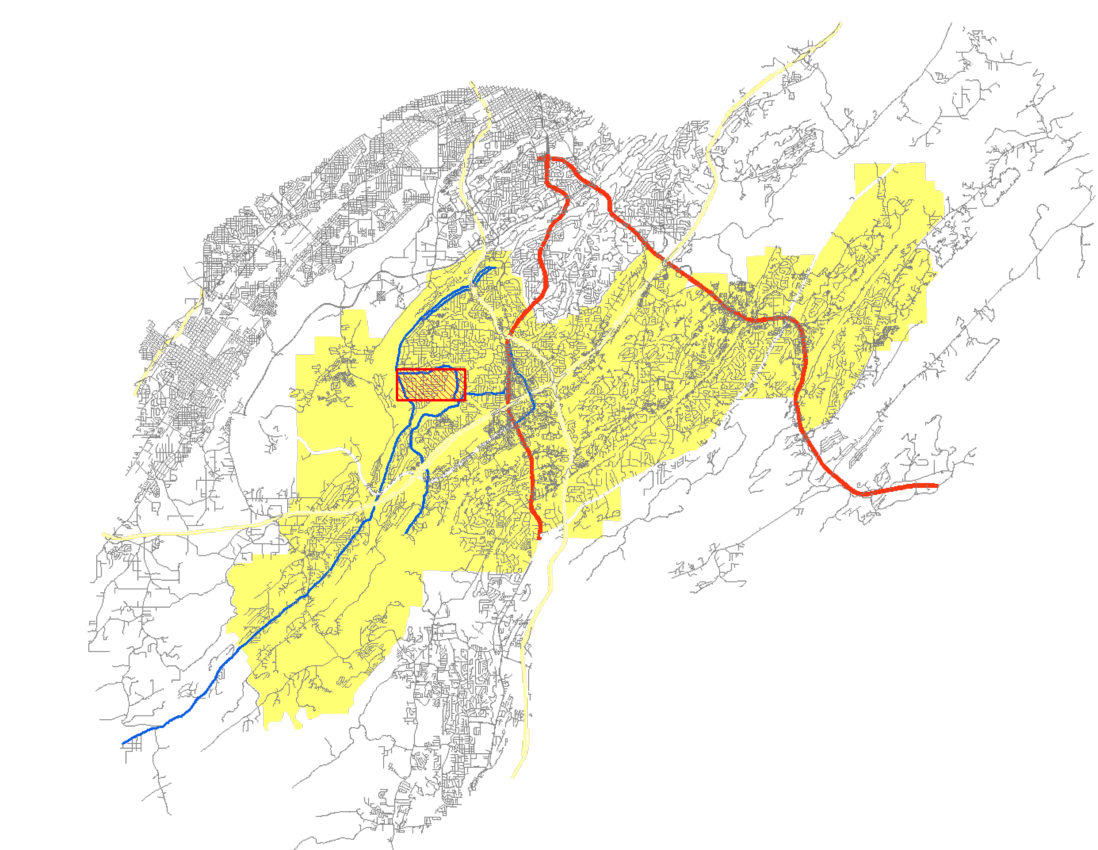


# Attachment 7



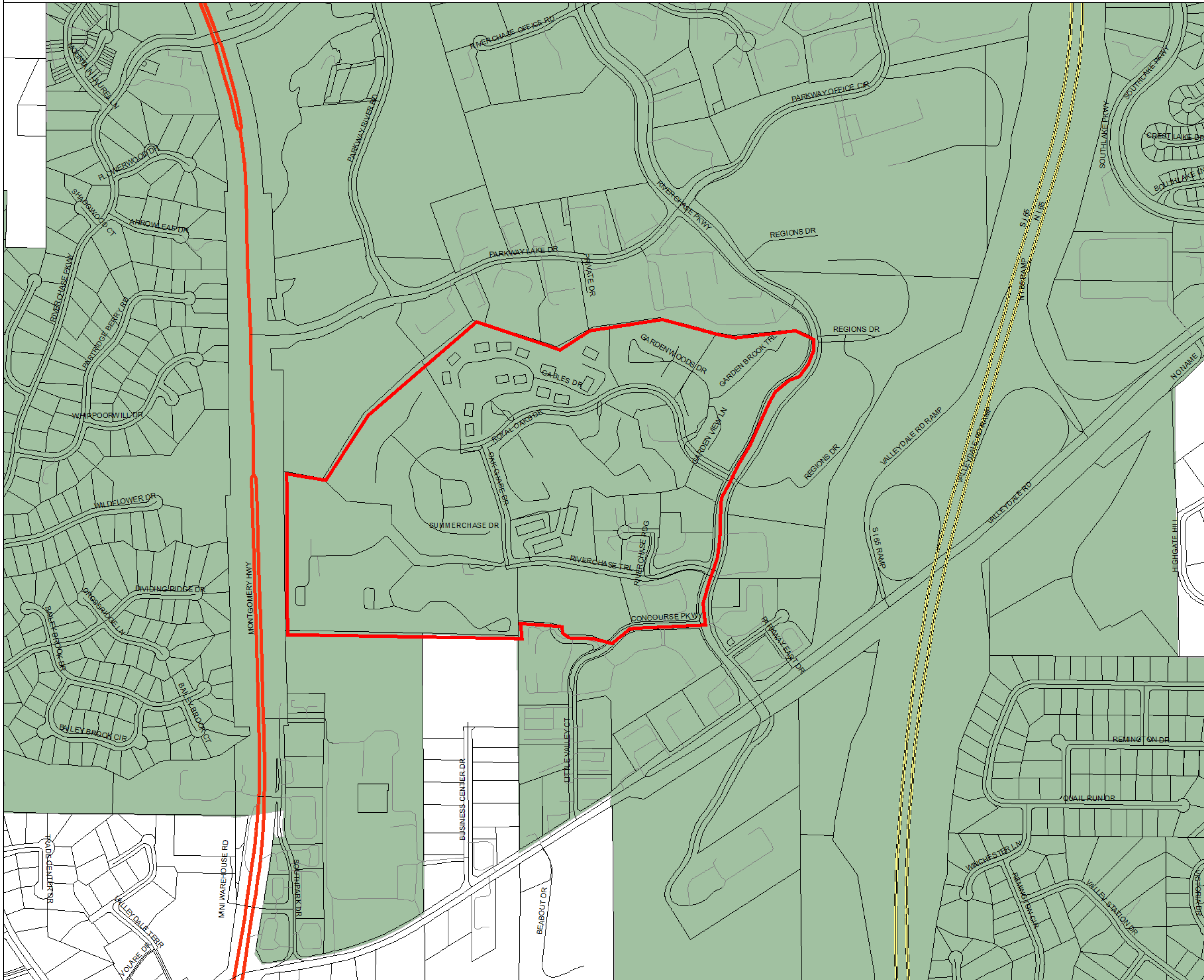
- Streets
  - ROAD\_CLASS
    - U.S. HIGHWAY
    - Local
    - COUNTY RD
    - INTERSTATE
    - STATE RD
    - US HIGHWAY
    - 4
- Parcels
- Elementary School Zones
  - Bluff Park
  - Deer Valley
  - Green Valley
  - Greystone
  - Gwin
  - Riverchase
  - Rocky Ridge
  - Shades Mountain
  - South Shades Crest
  - Trace Crossings

29711





# Attachment 8



- Streets
- ROAD\_CLASS
  - U.S. HIGHWAY
  - Local
  - COUNTY RD
  - INTERSTATE
  - STATE RD
  - US HIGHWAY
  - 4
- Parcels
- Elementary School Zones
- Bluff Park
  - Deer Valley
  - Green Valley
  - Greystone
  - Owin
  - Riverchase
  - Rocky Ridge
  - Shades Mountain
  - South Shades Crest
  - Trace Crossings

2511

