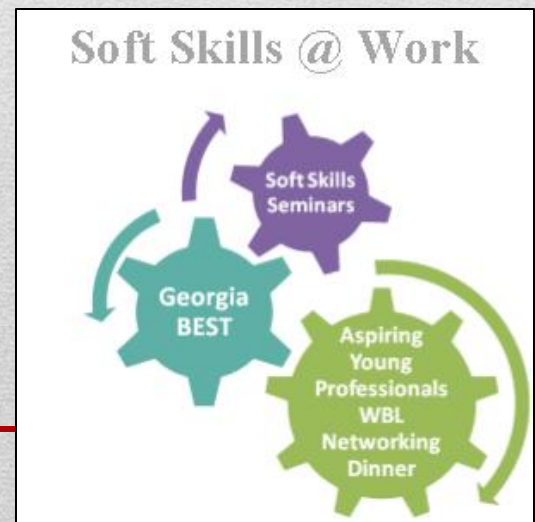


# DISCIPLINE & CHARACTER

Houston County School System  
Supplemental Resource  
for Georgia BEST



- Students will understand the importance of good character traits in the classroom as well as in the workplace.
- Students will learn to:
  - maintain honest behavior in all situations
  - be trustworthy, reliable and dependable in all responsibilities
  - demonstrate self-discipline and self-responsibility.

# **Discipline and Character**

---

- In return for salary or wages and fringe benefits paid to employers:
  - Expect employees to work together toward achieving the objectives of the company
  - Expect employees to have certain desirable traits that will help them to perform their jobs well so that the company can succeed

# Employer Expectations

---

- Some of these traits include the following:
  - Loyalty
  - Honesty
  - Trustworthiness
  - Dependability
  - Reliability
  - Initiative
  - Self-discipline

# Good Character Traits

---

- Self-responsibility
- Dishonesty and lying
- Irresponsibility
- Goofing off
- Attending to personal business on company time
- Arrogance

# **Negative Behaviors**

---

- Absenteeism and lateness without notice
- Not following instructions or ignoring company policies
- Complaining about the company or the job
- Absence of commitment, concern, or dedication
- Laziness and lack of motivation and enthusiasm

# **Negative Behaviors**

---

- Lack of character
- Inability to get along well with others
- Disrespect
- Displays of anger or pettiness
- Making ill-informed decisions
- Taking credit for work done by others

# **Negative Behaviors**

---

- <http://charactercounts.org/sixpillars.html>
- <http://www.scribd.com/doc/5402048/Traits-of-Good-Character>



# References

---