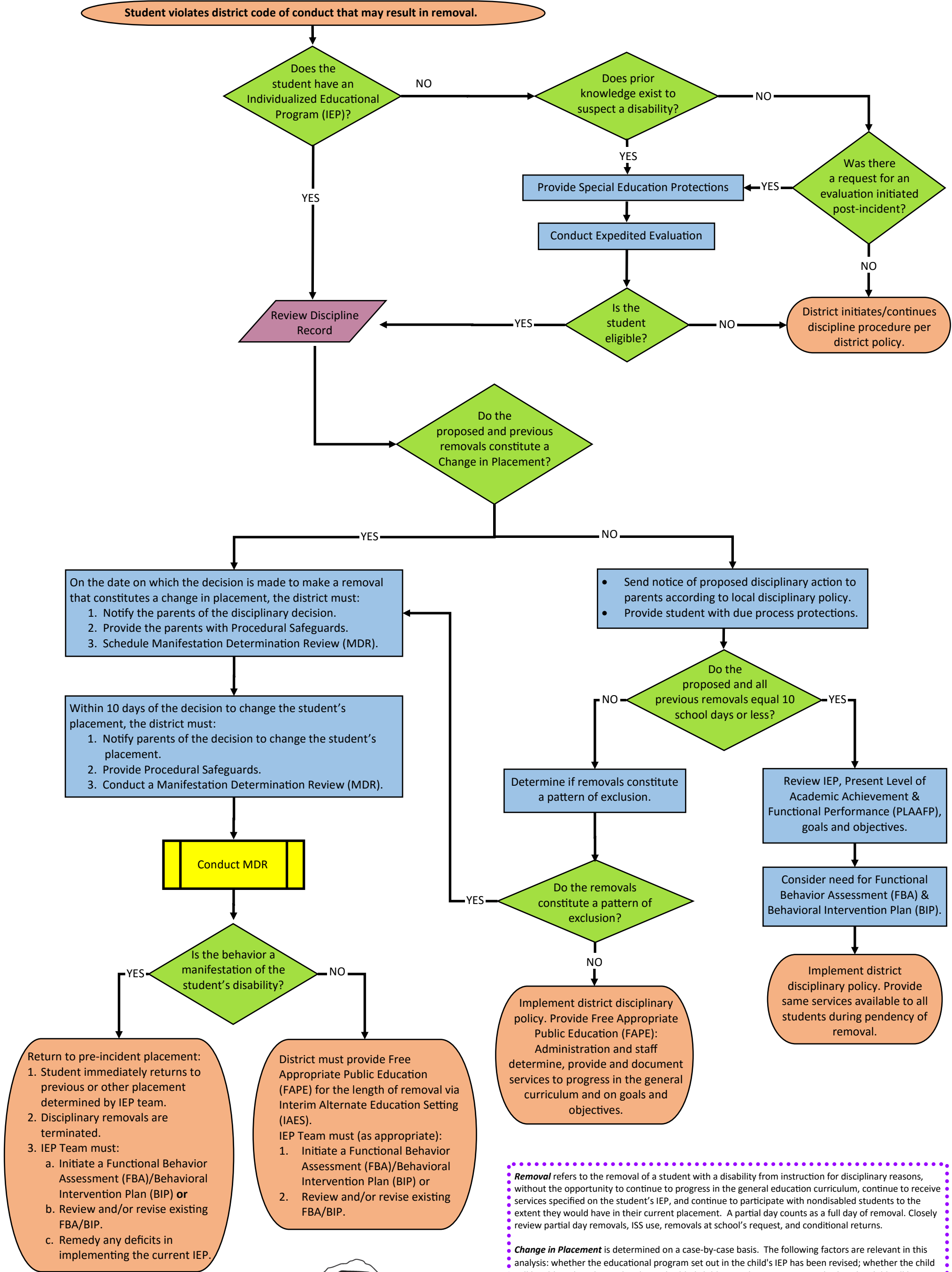
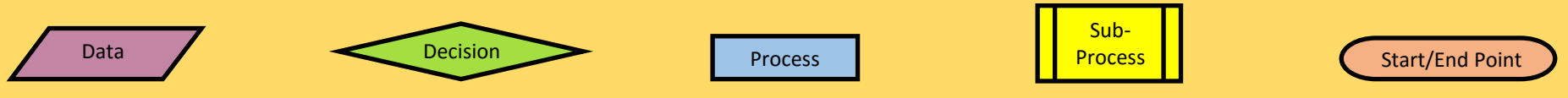


Discipline—General Considerations Flow Chart

Purpose: To distinguish relevant policy that must be applied to disciplinary decision making and clarify key decision points in the process.



Removal refers to the removal of a student with a disability from instruction for disciplinary reasons, without the opportunity to continue to progress in the general education curriculum, continue to receive services specified on the student's IEP, and continue to participate with nondisabled students to the extent they would have in their current placement. A partial day counts as a full day of removal. Closely review partial day removals, ISS use, removals at school's request, and conditional returns.

Change in Placement is determined on a case-by-case basis. The following factors are relevant in this analysis: whether the educational program set out in the child's IEP has been revised; whether the child will be able to be educated with nondisabled children to the same extent; whether the child will have the same opportunities to participate in nonacademic and extracurricular services; whether the new placement option is the same option on the continuum of alternative placements.

