



LEBANESE SOCIETY FOR EDUCATIONAL &  
SOCIAL DEVELOPMENT

الجمعية اللبنانية للإنماء التربوي والاجتماعي

Alone we can do so little;  
together we can do  
**SO MUCH**

- Helen Keller -



Middle East Bible Outreach



To **serve** the Church in Lebanon  
and the Arab World through  
**spiritual, social and educational development**



“**God** is very much  
**at work** in the Middle East North Africa

with A M A Z I N G opportunities  
for **YOU** too to be involved. ”



There is so much going on in the Arab World today – some of which you hear about through the news, but the best part is what no media corporation cares to mention: God is very much at work in the

Middle East North Africa [MENA] with amazing opportunities for you too to be involved.

Ours is a mission to empower the Church in the Arab World. Serving in this region provides us with the opportunity to share God’s love with many hurting people, who were, or are, victims of war, poverty, a lack of education and many more challenges. We do so with a vision to see «God glorified, people reconciled, and communities restored, through the Church in the Arab World».

Though located in Lebanon, the Lebanese Society for Educational and Social Development [LSESD] has a far-reaching impact across the MENA region with programs ranging from leadership development, education - including individualized support for children with learning difficulties, also publishing, relief and community development...

As a US corporation, the Middle East Bible Outreach [MEBO] coordinates strategic fundraising efforts among US friends to generate awareness and much-needed financial gifts and prayers to support the work of the robust ministries of LSESD.

Thank you for allowing us the opportunity to introduce you to the areas of Christ-centered ministry through which Lebanese Baptists are engaging their nation and the region!

**Nabil Costa**  
*Executive Director*

## INTRODUCING OUR PARTNERSHIP RELATIONS TEAM

LSESD



**ALIA ABBOUD**

*Director of Development and Partner Relations*

LSESD Ministries

Email: AAbboud@Lsesd.org



**ROSETTE MANSOUR**

*Partner Relations Officer*

LSESD Ministries

Email: RMansour@Lsesd.org



**NOELLE HADDAD**

*Communications Officer*

LSESD Ministries

Email: NHaddad@Lsesd.org

ABTS



**WISSAM AL-SALIBY**

*Partnerships Manager*

Arab Baptist Theological Seminary

Email: WalSaliby@ABTSLebanon.org



**SARA OBEID**

*Communications Officer*

Arab Baptist Theological Seminary

Email: SObeid@ABTSLebanon.org

MEBO

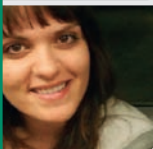


**EMILY HILBURN**

*Director of Development*

Middle East Bible Outreach

Email: EHilburn@Mebo.org

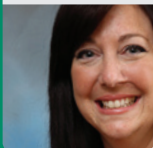


**MICHELLE CONSTANTINE**

*Administrative Assistant*

Middle East Bible Outreach

Email: MConstantine@Mebo.org



**LIZ CRUSEY**

*Consultant*

Middle East Bible Outreach

Email: LCrusey@Mebo.org

## INTRODUCING OUR MINISTRY LEADERS

ABTS



**ELIE HADDAD**

*President*

Arab Baptist Theological Seminary

BCYM



**JOSEPH KAZZI [Rev.]**

*Youth Minister*

Baptist Children and Youth Ministry



**GLADYS HADDAD**

*Manager*

Baptist Children and Youth Ministry

BBS



**PIERRE RAHAL**

*Principal*

Beirut Baptist School

DMAH



**SAWSAN TANNOURY**

*Publishing Manager*

Dar Manhal Al Hayat

R&D

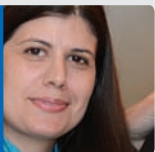


**RUPEN DAS**

*Director*

Relief and Community Development

SKILD



**HIBA AL-JAMAL**

*Director*

SKILD Center for

Smart Kids with Individual Learning Differences





Founded in the 1950's, the **Beirut Baptist School [BBS]** is located in a densely populated suburb of the Lebanese capital, Beirut. Serving students from nursery through grade 12, the school has established a high standard of education that led to its accreditation in 2010 as a Quality School by the North Central Association Commission on Accreditation and School Improvement [NCA CASI] - an accreditation division of AdvancED.



Since its founding, the BBS has earned the acceptance of the community by quietly and lovingly lighting little fires of hope into the heart of each student and every home. In Fact, over 90% of the BBS student body of more than 1300 come from non-Christian families who recognize the school's Christ-centered values as a major benefit. BBS has been described as a beacon of knowledge, a lighthouse of truth, a citadel of faith, and an oasis of tolerance and understanding for the future leaders of Lebanon. Taking a glimpse into its lifetime, BBS has graduated over 2,000 students who now serve in all professions and levels of



society in Lebanon and overseas. BBS works passionately and professionally to prepare the students in mind, body and spirit to meet the challenges of the world around them.



EDUCATION



Join hands with us on any of these projects that are geared towards a safe and enhanced school programme and environment:

**\$ 2,950 [per unit] | BBS-IB**

*Integrate educational technology in the curriculum through installing an Interactive Board in each classroom. [US\$ 2,950 to install one unit. A total of 70 units are needed for KG to Grade 12, computer labs and library included]*



**\$ 7,800 | BBS-ScL**

*Equip the science laboratory with graduated cylinders, beakers, magnets, pH meters, ...*

**\$ 8,700 | BBS-PSc-Pg**

*Support the early childhood development by furnishing the pre-school playground with much needed play equipment.*

**\$ 22,800 | BBS-PSc-F**

*Equip the pre-school with safe and age-appropriate tables and chairs.*





**\$ 35,880 | BBS-RLRR**

*Furnish and equip BBS' Research and Learning Resource Room with 32 computers, educational software, a server and appropriate furniture for the use of over 250 students per year.*

**\$ 18,000 | BBS-iPad**

*Equip the Special Education Program with iPads and relevant and appropriate Apps for the use of BBS students.*

**\$ 37,206 | BBS-LRP**

*Enable KG to Grade 9 students to not only learn to be good readers but to actually read through the Leveled Reading Program that implements differentiated instructions, and is used for remedial and special education.*

**\$ 3,000 | BBS-SED-OT**

*Purchase Occupational Therapy material to help improve children's cognitive, physical, and motor skills and enhance their self-esteem and sense of accomplishment.*





Due to socio-cultural factors in Lebanon, children who are unable to find immediate success in mainstream schools are left with no other option for education and inclusion in society. Founded in March 2011, **SKILD Center for Smart Kids with Individual Learning**

**Differences** is an oasis of hope for children with learning differences in Lebanon. SKILD specializes in providing individualized care for children with special needs and learning differences. This is a new field in Lebanon, hence, SKILD is also working on the national level to raise awareness as to children with learning differences' right to education. One outcome of these efforts is the launching of the National Day for Students with Learning Differences which is now observed annually on April 22. SKILD is also working diligently to amend the law in Lebanon to ensure that each public school has a special education program working to meet the individual needs of every student with learning difficulties.

أنا بفكر هيك  
أنا بكتب عليه



اليوم الوطني للتلامذة ذوي الصعوبات التعلمية  
NATIONAL DAY FOR STUDENTS WITH LEARNING DIFFICULTIES

22 نيسان

SPECIAL NEEDS

Therefore, in parallel with its Center-based individualized services and those provided at partner schools, SKILD Center is contributing immensely towards the development of a culture of respect for the rights of students with learning difficulties, and their empowerment that they may become active citizens.



SPECIAL NEEDS

SKILD is an **OASIS** of **HOPE** for children  
with *learning differences* in Lebanon.

Words  
from  
the heart

SKILD IS THE BEST  
Good job  
you're amazing  
PROBLEMS

By contributing towards any of the following projects, you're supporting SKILD team and Center as they work towards inclusive educational communities in Lebanon.



**\$3,000** | SKILD-Res

Resource SKILD Center with educational tools and batteries.

**\$12,000** | SKILD-CD-CFS

Develop a safe and child-friendly outdoors area for SKILD's summer programme for special needs children.

**\$3,500** | SKILD-Par

Provide appropriate knowledge and training for parents of special needs children to complement the work done by SKILD.

**\$1,000** | SKILD-Sub

Educational support for Special Needs children is very expensive. Your contribution towards the Support Fund makes possible subsidized services that enable families to pursue the Individualized Education Programs [IEP] for their special needs children.  
[Total needed: US\$ 25,000]

SPECIAL NEEDS

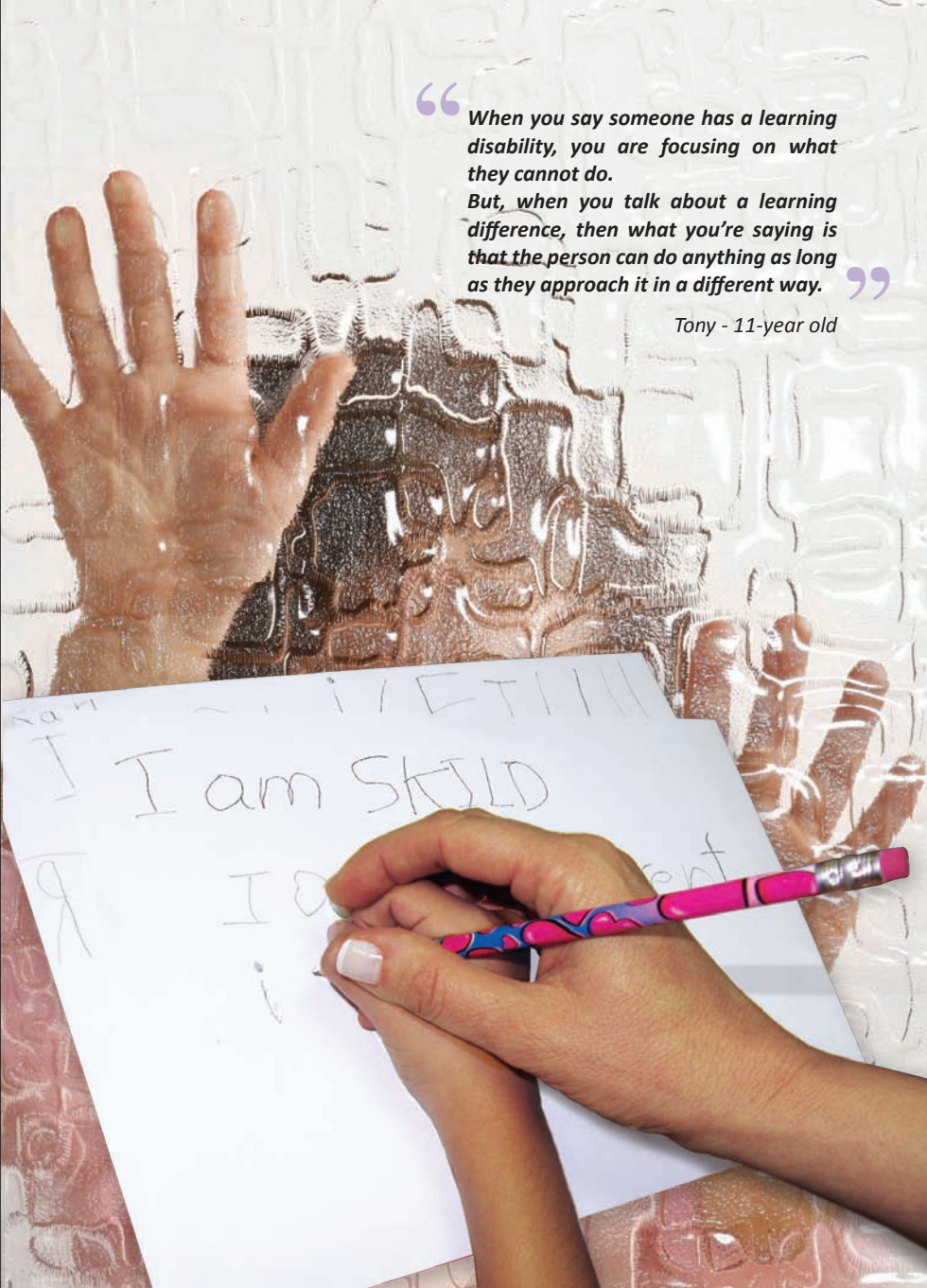




“  
When you say someone has a learning disability, you are focusing on what they cannot do.  
But, when you talk about a learning difference, then what you're saying is that the person can do anything as long as they approach it in a different way.”

Tony - 11-year old

SPECIAL NEEDS





Founded in the 1960s with a mission to serve the Church in the Arab World, the **Arab Baptist Theological Seminary [ABTS]** is one of the few seminaries where believers from non-Christian background find theological formation in the Arab World. ABTS equips servant-leaders for the ministry challenges arising in the Middle East and North Africa [MENA] – be it theology, apologetics, communication, pastoral care, ethics, society or culture. ABTS students come from various Evangelical denominations, and its graduates are providing strategic leadership to the churches and growing communities of believers in many countries of the MENA region.

ABTS currently caters to more than 60 men and women enrolled in one of the theology programs offered — a one-year Certificate of Theology, a three-year Bachelor of Theology and a three-year Master of Divinity. All the courses are taught in Arabic. The Seminary's Finlay Graham Library provides extensive Arabic theological resources in addition to English resources.

Theological formation and spiritual growth of men and women at ABTS is an essential part of the expansion plans of their local churches. Therefore, in the admission process, all applicants are expected to show endorsement by their churches or sending ministry, and to return to their home countries to minister.



Knowing that ABTS students and their sending churches cannot contribute significantly towards the cost of study and training, the Seminary does not turn down eligible prospective students for financial reasons. ABTS relies on God and faithful partners to provide the resources needed for His ministry. Partnering with ABTS can be on one of the following projects:

**\$ 10,000 | ABTS-Sch**

*Equip a leader [Man/Woman] from the Middle East and North Africa region to better serve the Church in their country. This annual amount covers room, board, tuition and books.*

**\$7,000 | ABTS-ChSp**

*ABTS' student body includes couples with children who need appropriate nursery services or schooling. This annual amount covers the room and board, and nursery/schooling for one child.*



**\$ 20,000 | ABTS-Lib**

*Enables ABTS' Finlay Graham Memorial Library maintain up-to-date resources that meet the demands of the rigorous programs offered at ABTS.*

**\$ 60,000 | ABTS-CD**

*Develop ABTS campus facilities. Current needs include renovating the student housing, installing a new generator and/or solar panels and a water pump; providing laptops and wireless internet access to all students; equipping the library with mobile shelving to house more books in a small space; renovating and expanding the catering services.*



Founded at ABTS in 2003, **The Institute of Middle East Studies [IMES]**, is a research and resource institute whose mandate is to bring about positive transformation in thinking and practice between Christians and Muslims in the Middle East and beyond. IMES offers the Master of Religion in Middle Eastern & North African Studies [MRel in MENA Studies], a multidisciplinary graduate degree focusing on the history, politics and economics of the Middle East and North Africa, Christianity and Islam in the region, and MENA cultures. The degree is offered in English and seeks to serve both Arabs and non-Arabs. In June 2014 and in June 2015, IMES is holding one-week Middle East Consultation with the purpose of equipping participants to respond in prophetic and Christ-like ways to the many challenges facing Christians and Muslims in and beyond the Middle East. The two consultations will address the challenging topic of discipleship in the Middle East and North Africa. We will give voice to those who have practiced and been influenced by various approaches to discipleship, with varying degrees of fruitfulness within the region.



### Learning Opportunities

#### Institute of Middle East Studies

- Lebanon Practicum
- Middle East Conference
- Masters of Religion in MENA Studies



You can support IMES' mandate and programs through contributing as follows:

**\$ 23,000** | IMES/MEC

*Towards the Middle East Consultation costs.*

**\$ 27,600** | IMES/MgrAdm

*Annually, to sponsor the position of IMES Projects Manager & Administrator.*

**\$ 20,000** | IMES/MRelSub

*To subsidize residency costs of the MRel in MENA Studies.*

**\$ 17,000** | IMES/MECBurs

*In bursaries towards the participation of non-Westerners in the Middle East Consultation.*

## Looking to increase your ability to communicate within the Middle East region?

The IMES' **Academy of Languages and Practical Skills [ALPS]** is equipped to offer short to long-term language learning solutions. Unique to ALPS is its very own language curriculum, which greatly assists students in reaching their language learning goals.





Next to equipped leaders, the second major need for the Arab church today is for Christian resources in the Arabic language. Established in 1953, **Dar Manhal Al Hayat [DMAH]**, i.e. Life Source publishing, is focused on enriching the Arab World with a wide variety of quality Christian resources and books. DMAH currently publishes around 25 titles every year, both translations of highly credible non-Arabic resources as well as others written by Arab scholars and authors. Recent major publications include the Arabic version of the MacArthur Study Bible and David C. Cook's Action Bible. This in addition to working with the Arab Baptist Theological Seminary on the production of theological textbooks in the Arabic language and in response to the need of over 20 theological schools and seminaries in the MENA region.

DMAH believes that knowledge leads to independent thinking which can lead to communities opening up to the Gospel. It is through these efforts that DMAH seeks to expand the Kingdom of God.

There are several projects to be involved in through DMAH to help resource the Church:



#### **\$ 7,000 | DMAH-KoG**

*Distribute "The King of Glory" to 600 Syrian refugee children.*

#### **\$ 5,000 | DMAH-Wom**

*Invest in developing the lives of women in the Arab World through educational and encouraging resources.*

#### **\$ 16,000/year | DMAH-Mag**

*Contribute towards the launching of a new Christian magazine that provides a practical, biblically based perspective on all aspects of life and up-beat articles encouraging Christians of all ages to apply the teachings of Jesus to their whole lives: heart, mind, soul and strength.*





**\$ 45 | DMAH-SoJ**

Put the "Story of Jesus" booklet in the hands of 180 children.

**3,000 | DMAH-ActB**

Put David C. Cook's "Action Bible" in the hands of 150 vulnerable young adults.

## INTRODUCING KONOZ



On another level, LSESD's latest project is the development of "KONOZBOOKS" an e-bookstore for Arabic Christian resources produced by various publishing houses in the region; and "KONOZ" an Arabic e-reader APP.

- KonoozBooks will provide people in the MENA region and beyond with a wide range of digital Christian resources that can meet their need and quench their thirst.
- Konooz App will provide servants of the Lord who are eager to carry the Gospel to unreached parts of the Arab world with an electronic library of Christian teaching materials that they can take with them to even the most remote villages.

*Partner with us as we convert Christian Arabic Literature into digital, searchable and more accessible format, that will open up many new doors for the reach of the gospel and its principles to new markets that the physical books could never reach. Annual amount needed: **US\$ 30,000** | KONOZ*

## RELIEF AND COMMUNITY DEVELOPMENT

The relief efforts of LSESD and the local churches are

**LIVING OUT**

what it means to show Christ-like

*Love.*



The **Relief and Community Development Program** at LSESD was born out of emergency relief that the various ministries provided to internally displaced persons [IDPs] during the 2006 war on Lebanon. The program was created and has since undergone rapid expansion back into relief realm, such that today LSESD's humanitarian response to the Syria crisis serves over 5000 households of vulnerable Syrians in Lebanon and Syria with food aid and medical assistance, also non-food and winterization items such as blankets, mattresses and stoves. Education, and vocational training for income generation too. This has become an impacting ministry, as churches have been the primary partners distributing relief supplies and conducting activities, resulting in unexpected fellowship between refugees and church members. This byproduct of relief activities has considerably enhanced the work of the Church in the areas where LSESD is providing aid, serving to broaden the spiritual vision of Lebanese Christians involved in the response, enhancing the role of the Church in Lebanon. LSESD has also been providing both formal and informal training to local church leadership in how to effectively respond to the needs of the refugees and displaced.

Your contribution can make a difference:

**\$ 70** | SRel/bm

*Provide a family with 4 blankets and 1 mattress.*

**\$ 140** | SRel/bms

*Provide a family with 2 blankets, 1 mattress and 1 stove.*

**\$ 300** | SRel/bmwf

*Provide a family with 2 blankets, 1 mattress, 1 water filter, 1 stove and fuel vouchers for 4 months.*

**\$ 495** | SRel/bmwf

*Provide a family with 3 blankets, 2 mattresses, 1 water filter, 1 stove and fuel vouchers for 8 months.*

**\$ 100** | SRel/f

*Provide a food pack for ONE family for one month.*





The **Baptist Children and Youth Ministry [BCYM]** strives to reach young people with God's message in a way they can receive and understand. This ministry does so through conferences and children camps that include bible studies and discussion groups. The goal is to develop in the young people an understanding of Jesus' love and teachings, and how to apply those teachings to their lives. As a result, many of the children coming up through the camps have become leaders themselves, serving in the same camps that influenced them when they were young. This ministry takes these programs beyond the church and into the shelters and orphanages to many that have never heard God's word, but desperately desire the hope it provides. With the influx of Syrian refugees into Lebanon, BCYM has now expanded to reach Syrian children too.



### **MISSION TEAM OPPORTUNITY**

#### **Participate in 3-day camps for children!**

The ideal visiting Mission Team would have 6 members [age 18+] who are equipped to work with the unique needs of vulnerable children, Syrian refugees included.

- Needed skills include:**
- **Sports Leadership**
  - **Arts & Crafts**
  - **Nursing**

Many of the vulnerable children reached by BCMY are unable to contribute to the cost of the camps so outside funding is crucial to them being able to hear about the love of Jesus and the biblical principles that are shared at the camps. Please pray about how you can be involved in making a difference in these young lives through the needs listed here:

**\$ 165 | BCMY/Camp/1**

*Sponsor the participation of a vulnerable child in a three-day spiritual and recreational camp. [Total children – 1,000]*

**\$ 1,300 | BCMY/AB**

*Provide 65 children with their personal copy of the Arabic version of “The Action Bible”.*

**\$ 1,650 | BCMY/Camp/2**

*Sponsor the participation of 10 vulnerable children in a three-day spiritual and recreational camp.*

**\$ 2,250 | BCMY/Puppet**

*Establish and resource a Puppet Ministry that will use a fun and creative way to share Christ with children attending camps and follow-up events.*

**\$ 3,000 | BCMY/Aid**

*Enable the purchase of much needed clothes items for 60 vulnerable children participating in BCMY camps.*

**\$ 4,950 | BCMY/Camp/3**

*Enable the participation of 30 vulnerable children in a three-day spiritual and recreational camp.*

**\$ 6,000 | BCMY/Follow-up**

*Support follow-up events held each year to nourish relationships and reinforce what the children learn when attending camps during the year.*

**\$ 15,000 | BCMY/YouthConf**

*Hold an annual Youth Conference designed to share basic biblical principles and truths with youth through teaching, discussion, activities and relationship building.*





## Beirut Baptist School E x p a n s i o n

Situated in a densely populated neighborhood in the heart of the Lebanese capital, the Beirut Baptist School contends with lack of space. Space restrictions risk affecting the quality of education offered, and by extension, have the potential to undermine the effectiveness of the school's mission. A concern that was translated during AdvancED's Accreditation process into a recommendation that "significant progress be made on facilities remodeling to reduce overcrowding and enhance safety". Since then, BBS has been working on a major and gradual campus expansion project to develop and expand the school facilities to provide a safe, comfortable, and pleasant environment conducive to student learning.



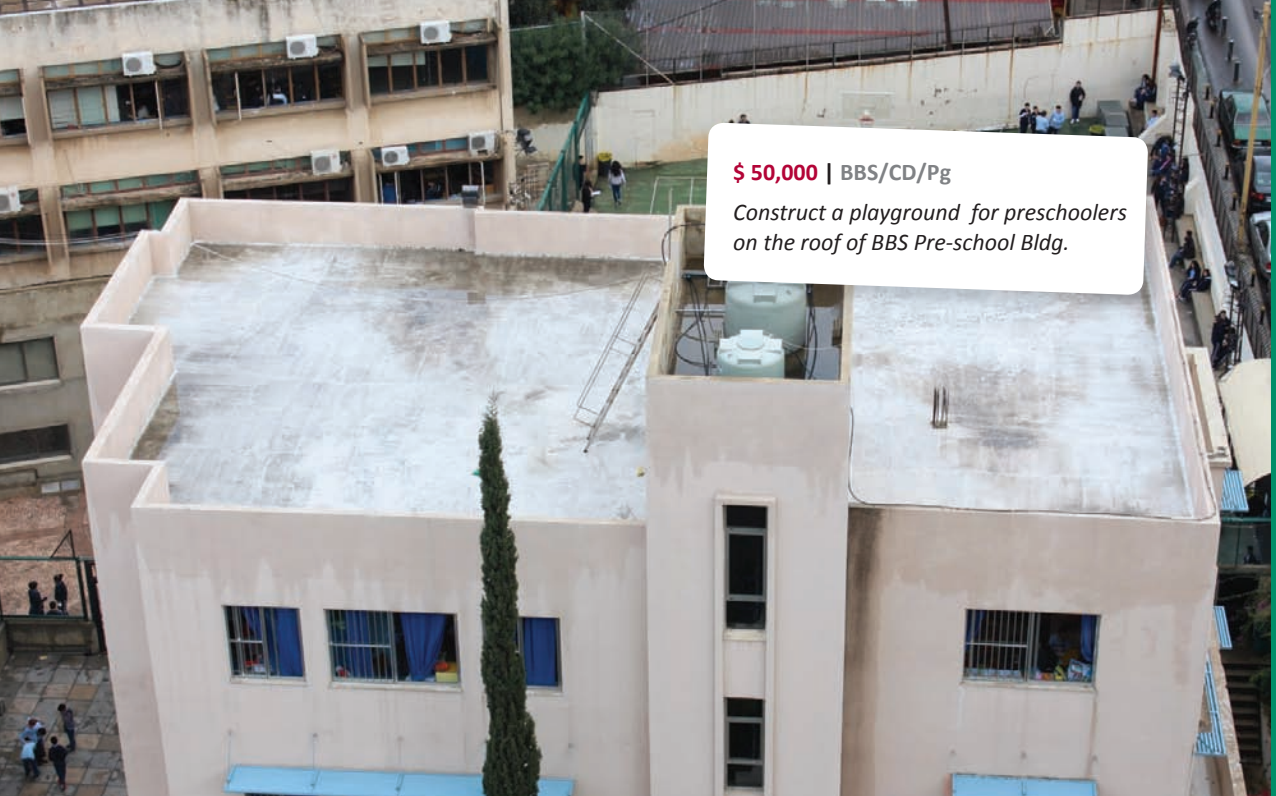
With nowhere to expand for a much-needed play area, the roof of the BBS Elementary building is the only available possibility thereby making excellent use of 607sqm.



**\$ 150,000** | BBS/CD/Roof

*Construct a playground on the roof of BBS Elementary Bldg. Cost includes getting the appropriate permits.*





**\$ 50,000** | BBS/CD/Pg

*Construct a playground for preschoolers on the roof of BBS Pre-school Bldg.*



## SKILD Elementary School

In response to the need, and for LSESD to expand the impact of the SKILD program on Lebanese society, it is planning to construct a school for special needs children that will provide an example of classroom integration of special needs and mainstream students in the same classroom while also providing specialized care for the special needs students.

The school is designed for children in KG 1 and KG 2 through 6th grade with 45-60 children per grade for a total number of approximately 400 students.

The SKILD Elementary School is being planned to provide a model for special needs education in Lebanon and neighboring countries and be a force for change in government policy and societal outlook.



**\$ 2,000,000** | SKILD-CD-Sch

*Construct phase 1 of SKILD Elementary School.  
[Cost includes getting appropriate permits, completion of excavation and phase 1 construction work]*

### OTHER OPPORTUNITIES

## Vision Trips

LSESD offers short vision trips designed to provide one or all of the following to participants:

- A deeper understanding of the MENA and Lebanese contexts
- A closer look at LSESD ministries
- To explore opportunities for involvement in Lebanon and the region

We would love for you to be a part of what LSESD is doing in the Arab World. If you are interested in participating in a vision or mission trip to Lebanon or in giving towards our various ministry needs, please contact us. We look forward to hearing from you and partnering with you soon!

## LEBANON

### LSESD

Mailing Address P.O. Box 165 Mansourieh El Maten,  
Lebanon

Street Address Lebanese Society for Educational  
and Social Development campus,  
Blata Street – Mansourieh El Maten, Lebanon

## USA

### MEBO

Mailing Address 3605 Sandy Plains Rd. Suite 240  
PMB 272, Marietta, GA 30066

**For our partners in the United States, the Middle East Bible Outreach [MEBO] is a 501 C 3 corporation and can issue a deductible receipt in return for contributions.**

Visit MEBO at [www.mebo.org](http://www.mebo.org)

## VISIT OUR WEBSITES

- Academy of Languages and Practical Skills, [www.abtslebanon.org/ALPS](http://www.abtslebanon.org/ALPS)
- Arab Baptist Theological Seminary, [www.abtslebanon.org](http://www.abtslebanon.org)
- Baptist Children and Youth Ministry, [www.bcymlebanon.org](http://www.bcymlebanon.org)
- Beirut Baptist School, [www.bbs.edu.lb](http://www.bbs.edu.lb)
- Dar Manhal Al Hayat, [www.dar-manhal-alhayat.com](http://www.dar-manhal-alhayat.com)
- Institute of Middle East Studies, [www.abtslebanon.org/IMES](http://www.abtslebanon.org/IMES) | Blog, [www.imeslebanon.wordpress.com](http://www.imeslebanon.wordpress.com)
- Konooz, [www.konoozbooks.com](http://www.konoozbooks.com)
- Lebanese Society for Educational and Social Development, [www.Lsesd.org](http://www.Lsesd.org)
- Relief and Community Development, [www.Lsesd.org](http://www.Lsesd.org)
- SKILD Center, [www.skild-edu.org](http://www.skild-edu.org)



Middle East Bible Outreach