



Lebanese Society  
for Educational & Social Development  
الجمعية اللبنانية للإنماء التربوي والاجتماعي

EMPOWERING  
*the Church*



SERVING  
*local communities*

# EMPOWERING the Church

LSESD is committed to enabling the church to remain relevant and maintain a vibrant witness in the Middle East and North Africa (MENA) region.

We do so by providing training and resources to a growing network of churches and individuals, encouraging them to be outward-looking and build strong links with their communities.

“Always be prepared  
to give an answer to everyone  
who asks you to give  
the reason for the hope  
that you have.”

- 1 Peter 3: 15 -



## LEADERSHIP DEVELOPMENT

We equip faithful women and men from all over the MENA region with theological tools and training to effectively serve their churches and communities.

## PROVIDING RESOURCES IN ARABIC

We address the needs of both Church and community through our engaging and inspirational Christian and educational resources that address contemporary issues from the Biblical perspective. We publish theological textbooks too.

## BUILDING BRIDGES

Our relief work among refugee communities, as well as our peacebuilding initiatives, enable us to forge valuable relationships based on respect and trust between people of different faiths, ethnic groups, and nationalities. We firmly believe that dialogue with “the other” is the only way forward in a region torn by years of war and conflict.

## SERVING THE CHURCH

We partner with local churches to enable them to respond to the needs of the community in a holistic manner that caters to mind, body and soul. We do so through capacity building and the provision of material and spiritual resources.





## SERVING

## local communities

LSESD pursues its mission in an integrated holistic approach that addresses the spiritual, emotional, and physical needs of the community.

Referred to by the U.N. as the universal “passport to human development”, education is a key area of focus for LSESD.

“Faith by itself,  
if it is not accompanied  
by action, is dead.”  
- James 2: 17 -



### EMERGENCY RELIEF

Millions of displaced people and other vulnerable communities in the MENA region lack security and financial stability, and are in vital need of assistance. Through local faith-based partners, LSESD provides several thousand families with the basics to survive – food, clothing, health services and items to keep them warm during harsh winters.

### PSYCHOSOCIAL SUPPORT

The horrors of war leave deep psychological and emotional scars on the community. We provide psychosocial support to traumatized children and youth to help heal their psychological wounds and enable them better cope with their every day life.

### EDUCATION FOR ALL

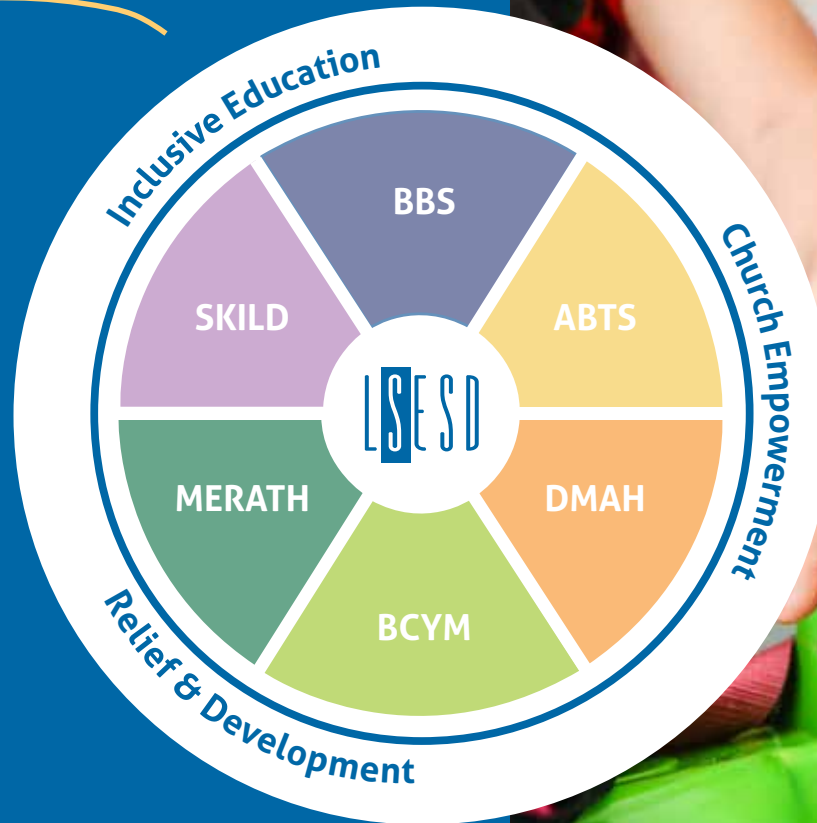
We invest considerably in education, desiring children to reach their full potential and improve their lives long-term. We also support those who struggle with learning differences, providing awareness and resources to public and private schools, as well as advocating for inclusive educational communities. Education is also at the center of our relief work, since it has the power to shape a whole community's future.



### COMMUNITY DEVELOPMENT

Through livelihood and development projects, we help vulnerable communities to gain new skills so that they can better support themselves and their families.

# How we work



We pursue our **MISSION** through  
**SIX** specialized LSESD MINISTRIES

## ■ ARAB BAPTIST THEOLOGICAL SEMINARY

ABTS responds to the Arab Church's need for equipped leaders by providing context-relevant theological training programs, both residential and online, to students from across the MENA region and beyond.

## ■ DAR MANHAL AL HAYAT

DMAH publishes and distributes a wide range of Christian and educational resources in Arabic in response to the needs of both Church and community.

## ■ BAPTIST CHILDREN AND YOUTH MINISTRY

BCYM organizes camps and events for vulnerable children and young people, including refugees.

## ■ MIDDLE EAST REVIVE AND THRIVE

MERATH implements relief and development programs for displaced and vulnerable families in Lebanon, Syria and Iraq in the fields of basic needs, education and child protection, and livelihoods.

## ■ SMART KIDS WITH INDIVIDUAL LEARNING DIFFERENCES

SKILD supports children with special needs by raising awareness and providing expertise, training and resources to schools and families.

## ■ BEIRUT BAPTIST SCHOOL

BBS provides students (ages 3 to 18 years) with an academically excellent education based on Christian values.







## Who we are

LSESD is a Lebanese faith-based organization that seeks to empower the Church and serve the local community in a holistic manner that caters to mind, body, and soul.

- We come alongside the Church in the Middle East North Africa, training, equipping and resourcing faithful leaders for effective service.
- We address the basic needs of vulnerable individuals and families in the community in a manner that preserves their dignity.
- We foster a culture of acceptance and respect for differences, offering hope and a future, giving particular attention to the voiceless and the marginalized.



**Lebanese Society for Educational  
and Social Development**  
Blata Street | PO Box 165 | Mansourieh  
Metn | LEBANON



**Middle East Bible Outreach**  
PO Box 9764 | The Woodlands,  
TX 77387-6764 | USA

**JOIN US ON THIS EXCITING ADVENTURE!**

FIND US ON



INFORMATION@LSESD.ORG



+961 4 400250

[ March 2018 ]