

Maricopa Unified School District

Pinal County

Efficiency peer groups 4 and T-6, Achievement peer group 4¹

Legislative district(s): 11

District size, location:

Medium-large, Town

Students attending:

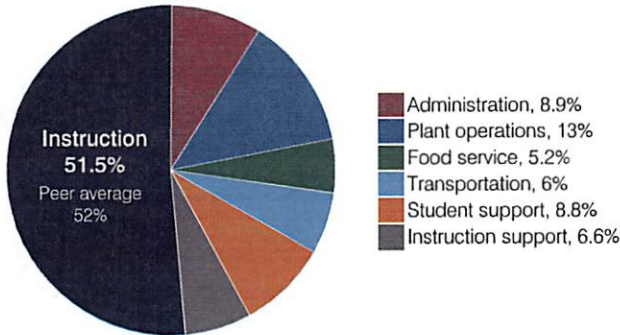
6,280

Number of schools:

9

OPERATIONAL EFFICIENCY

Spending by operational area



Efficiency measures relative to peer averages

Operational area	Measure	District	Peer average	State average
Administration	Cost per pupil	\$637	\$844	\$844
	Students per administrative position	89	69	67
Plant operations	Cost per square foot	\$6.51	\$5.36	\$6.30
	Square footage per student	144	190	155
Food service	Cost per meal	\$2.62	\$3.00	\$2.88
Transportation	Cost per mile	NR	\$3.94	\$3.84
	Cost per rider	NR	\$728	\$1,198

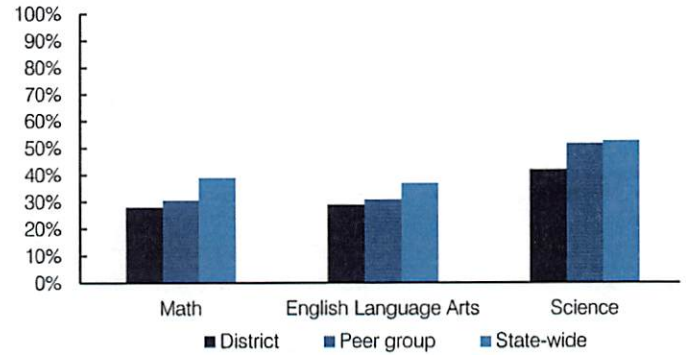
Very low Low Comparable High Very high

Per pupil spending

Spending by area	District		Peer average	State average
	2016	2017	2017	2017
Instruction	\$ 3,306	\$ 3,705	\$ 4,032	\$ 4,377
Administration	618	637	844	844
Plant operations	984	938	987	977
Food service	366	372	409	422
Transportation	413	431	414	381
Student support	627	633	607	679
Instruction support	424	472	481	461
Total operational	\$ 6,738	\$ 7,188	\$ 7,774	\$ 8,141
Land and buildings	\$ 138	\$ 40	\$ 346	\$ 691
Equipment	222	384	390	424
Interest	182	209	164	236
Other	50	160	77	161
Total nonoperational	\$ 592	\$ 793	\$ 977	\$ 1,512
Total per pupil spending	\$ 7,330	\$ 7,981	\$ 8,751	\$ 9,653

STUDENT ACHIEVEMENT, STUDENT AND TEACHER MEASURES, AND REVENUES

Students who passed state assessments



Student and teacher measures

Measure	District	Peer average	State average
Attendance rate	93%	94%	94%
Graduation rate (2016)	73%	88%	80%
Poverty rate (2016)	15%	15%	22%
Special education population	14%	13%	12%
Students per teacher	20.9	15.7	18.5
Average teacher salary	\$45,430	\$45,360	\$48,372
Amount from Prop 301	\$4,272	\$5,787	\$5,840
Average years of teacher experience	8.8	10.4	11.3
Percentage of teachers in first 3 years	18%	17%	19%

Per pupil revenues

Revenues by source	District		Peer average	State average
	2016	2017	2017	2017
Federal	\$ 913	\$ 910	\$ 2,260	\$ 1,318
State	4,935	4,833	4,086	3,831
Local	2,280	2,145	3,104	4,443
Total per pupil revenues	\$ 8,128	\$ 7,888	\$ 9,450	\$ 9,592

Select revenues from common sources

Source	District	Peer average	State average
Equalization formula funding	\$ 5,150	\$ 5,390	\$ 5,373
Amount from Prop 123	238	242	233
Prop 123 additional funding	44	44	46
Grants	982	942	1,374
Donations and tax credits	32	20	56

Select revenues from less common sources

Source	District	Peer average	Number of peers receiving
Desegregation	\$ 212	\$ 206	1 of 18
Small school adjustment	0	0	0 of 18
Federal impact aid	24	29	7 of 18
Voter-approved levy increases	591	569	14 of 18

¹ See Appendix A for information such as districts included in each peer group and Appendix B for sources and methodology.

Maricopa USD—page 2

Instructional spending percentage

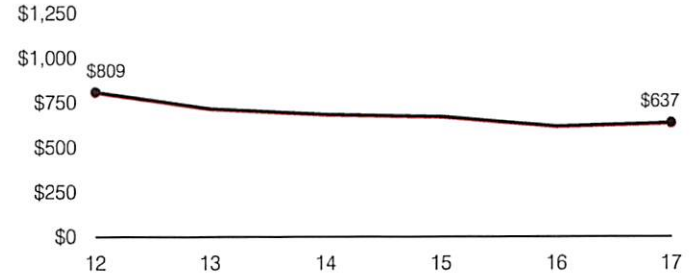
Year:	2001	2002	2003	2004	2005	2006	2007	2008	2009	2010	2011	2012	2013	2014	2015	2016	2017
Percentage:	59.1	56.8	58.8	51.1	55.8	55.5	55.2	59.7	52.3	50.7	49.6	47.0	47.4	47.0	48.7	49.1	51.5

OPERATIONAL TRENDS AND FINANCIAL STRESS ASSESSMENT Fiscal years as indicated

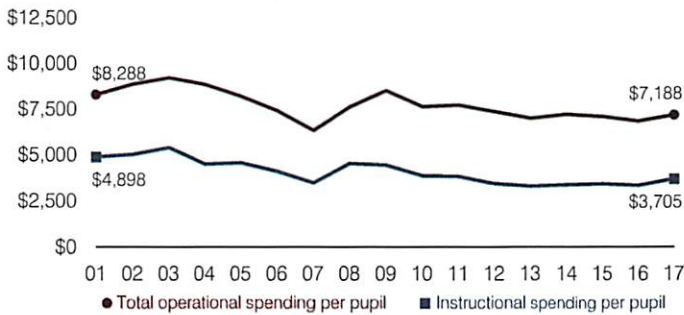
5-year spending trend (2012 through 2017)

Total operational spending per pupil, adjusted for inflation, decreased by 3 percent. The percentage of dollars spent on instruction increased overall from 47 to 51.5 percent. Overall, as a percentage of total operational spending, administration decreased substantially and plant operations and student support decreased, while instruction support increased slightly. Other noninstructional areas remained stable.

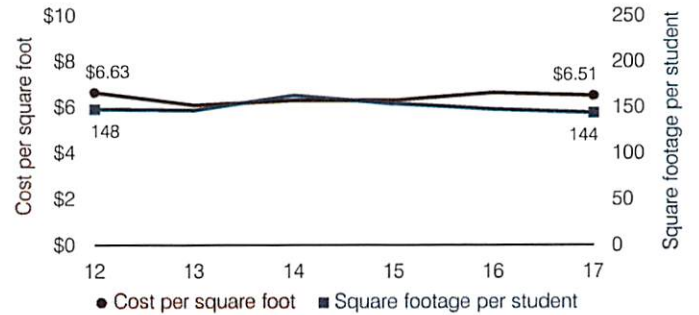
Administrative cost per pupil



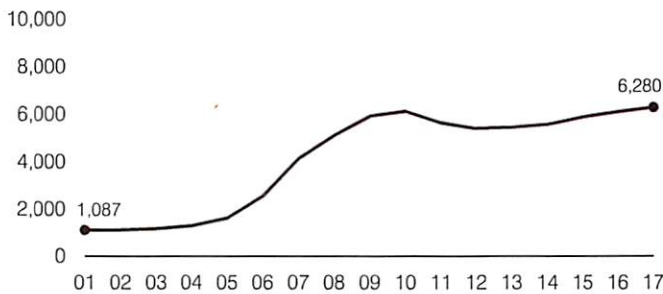
Total operational and instructional spending per pupil (inflation adjusted to 2017 dollars)



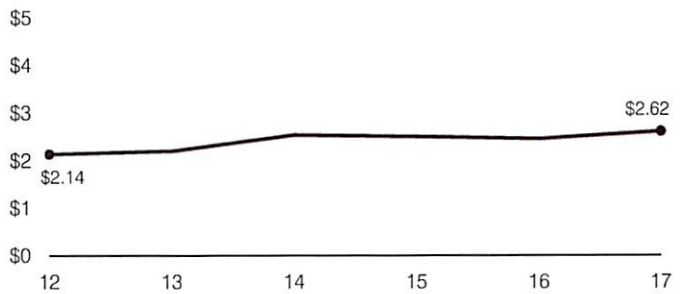
Plant cost per square foot and square footage per student



Students attending



Food service cost per meal



Financial stress assessment

Overall financial stress level: **Low**

Measure: 2015 through 2017

Measure	Assessment
Change in number of district students	Increase
Spending exceeded operating/capital budgets	No overspending
Spending increase election results	Voter-approved
Operating reserve percentage, Trend	5.2%, Varying
Years of capital reserve held	More than 3 years
Current financial and internal control status	Compliant



Transportation costs per mile and per rider

