



1090 Bristol Road
Mountainside, NJ 07092
(908) 654-8068
(800) 783-0567
Fax 908-654-8069

LEAD IN DRINKING WATER REPORT

Performed At:

Milltown Schools District
21 W. Church St
Milltown NJ 08850

Performed For:

Milltown BOE
21 W Church St
Milltown NJ 08850

Prepared By:

LEW Corporation
1090 Bristol Road
Mountainside, NJ 07092

Phone (908) 654-8068
Fax (908) 654-8069
Website <http://www.LEWCorp.com>

Inspection Date: May 30, 2017
June 28 2017

Project Number: 170049

Table of Contents

Contact Information	3
Introduction	4
Sampling Methodology	4
Drinking Water Results	5
Recommendations	5

Appendices

Appendix A	Exceedances
Appendix B	Recommendations
Appendix C	All results
Appendix D	Floor Plan(S)
Appendix E	Laboratory Data

Contact Information

Agency

Client Contact:	Cyril T Boco CEFM
Client Name:	Milltown BOE
Street Address	21 W Church St Milltown NJ 08850
Phone Number:	732-214-2370

Risk Assessor(s)

Site Assessor(s):	Neil Wendt
License:	NJDOH #030091
Signature:	
Date:	7-14-2017
E-Mail	nwendt@lewcorp.com

Firm

Organization:	LEW Corporation
Certification #:	NJDCA 00015 E
Street:	1090 Bristol Road
City, State & Zip:	Mountainside, New Jersey 07092
Phone Number:	908-654-8068
Web Address:	http://www.lewcorp.com

Laboratory

Organization:	Environmental Hazards Services LLC
Street:	7469 Whitepine Rd
City, State & Zip:	Richmond VA 23237
NJDEP Certification #	NJ-VA008
Phone Number:	800-347-4010

Introduction

LEW Corporation was contracted by Milltown School District to test for the presence of lead in drinking water in two schools in the district.

Sampling Methodology

LEW Corporation followed the July 13, 2016 amendments to NJAC 6A:26. Full details on sampling practices can be found in Districts Sampling Plan.

All samples were collected in 250ml wide mouth plastic containers that were prepackaged by the analytical laboratory. The sample containers may contain nitric acid, if expedited analysis is required. If not, nitric acid will be added to each sample upon arrival at the laboratory. At each sample location, the first draw sample was taken after it was determined that the water had been standing in the plumbing system for greater than eight hours but less than forty-eight hours. If second draw samples were collected, they were collecting following a flushing protocol outlined in the District's Sampling Plan.

Drinking Water Results

On April 10 and May 13, 2016, LEW Corporation collected the following number of water samples:

Park View School

- 36 first draw samples collected (including blank samples)
- 4 samples above the 15ppb action level

Joyce Kilmer School

- 21 first draw samples
- 3 samples above the 15ppb action level

On June 28 2017, LEW Corporation returned to collect the following number of samples:

Park View School

- 4 second draw samples
- 0 samples above the 15ppb action level

Joyce Kilmer School

- 3 second draw samples
- 0 samples above the 15ppb action level

The complete list of samples that exceeded the 15ppb limit can be found in Appendix A. The complete list of all sample results can be found in Appendix C. The laboratory results can be found in Appendix E.

Certain outlets could not or were not tested due to various reasons. The following table lists those locations and the reason why samples were not collected.

School	Sample Location	Reason for not testing.
Joyce Kilmer School	12-JK-DW Rm 115 Hall	Insufficient water for testing (leaking bottle)
Joyce Kilmer School	5-JK-DW Principal Office	Not functional

Recommendations

For those outlets where the first draw sample exceeds 15ppb and the second draw sample does not exceed 15ppb, the outlet is contributing lead to the drinking water and very little lead is being picked up upstream of the outlet in the building plumbing. LEW Corporation recommends immediately stopping use of these outlets. LEW Corporation then recommends replacing the outlet and associated plumbing up to the wall connection.

For those outlets where the first draw sample exceeds 15ppb and the second draw sample exceeds 15ppb, the outlet and the building plumbing are contributing lead to the drinking water. LEW Corporation recommends immediately stopping use of these outlets. LEW Corporation then recommends replacing the outlet and associated plumbing up to the wall connection, and installing a lead filter at the wall connection. A filter maintenance plan will need to be implemented, in order to ensure that all filters are in proper working order.

A complete list of recommendations per outlet can be found in Appendix B.

Additional Recommendations

- 1) Follow-up samples should be collected after any remediation efforts in order to determine the efficacy of the work.
- 2) Any of the inoperable/non-functioning outlets listed above that are brought back into service should be sampled.
- 3) Comply with all requirements set forth in NJAC 6A:26.

Appendix A Exceedances – 1st Draw Samples

Building	DateCollected	AnalysisDate	Sample ID	Sample Description	Concentration (ppb)
Joyce Kilmer	4-10-2017	4-18-2017	3-JK-DW	RM 102 HALL	15.4
Joyce Kilmer	4-10-2017	4-18-2017	19-JK-DW	RM 217 HALL	23.2
Joyce Kilmer	4-10-2017	4-18-2017	20-JK-DW	RM 217 HALL	28.4
Parkview	5-13-2017	5-19-2017	2-PS-WC	RM L107 HALL	33.9
Parkview	5-13-2017	5-19-2017	20-PS-FP	KITCHEN SINK	50.4
Parkview	4-10-2017	4-17-2017	30-PS-DW	RM L-114	24.1
Parkview	4-10-2017	4-17-2017	31-PS-DW	RM L-119	16.3

Appendix B Recommendations

Building	Location	Remediation Recommendation
Joyce Kilmer	RM 102 HALL	Replace the outlet and associated plumbing up to the wall connection.
Joyce Kilmer	RM 217 HALL	Replace the outlet and associated plumbing up to the wall connection.
Joyce Kilmer	RM 217 HALL	Replace the outlet and associated plumbing up to the wall connection.
Parkview	RM L107 HALL	Replace the outlet and associated plumbing up to the wall connection.
Parkview	KITCHEN SINK	Replace the outlet and associated plumbing up to the wall connection.
Parkview	RM L-114	Replace the outlet and associated plumbing up to the wall connection.
Parkview	RM L-119	Replace the outlet and associated plumbing up to the wall connection.

Appendix C All Results

Building	DateCollected	AnalysisDate	Sample ID	Sample Description	Concentration (ppb)
ALL SAMPLES ALL SCHOOLS ARE 1ST DRAW SAMPLES					
Joyce Kilmer	4-10-2017	4-18-2017	1-JK-DW	RM 107 HALL	2.18
Joyce Kilmer	4-10-2017	4-18-2017	2-JK-DW	RM 107 HALL	3.67
Joyce Kilmer	4-10-2017	4-18-2017	3-JK-DW	RM 102 HALL	15.4
Joyce Kilmer	4-10-2017	4-18-2017	4-JK-DW	RM 102 HAL	3.37
Joyce Kilmer	4-10-2017	4-18-2017	6-JK-NS	NURSE OFFICE	7.08
Joyce Kilmer	4-10-2017	4-18-2017	7-JK-NS	NURSE OFFICE	5.15
Joyce Kilmer	4-10-2017	4-18-2017	8-JK-FP	KITCHEN	3.40
Joyce Kilmer	4-10-2017	4-18-2017	9-JK-DW	GIRLS LOCKER RM	3.38
Joyce Kilmer	4-10-2017	4-18-2017	10-JK-DW	BOYS LOCKER RM	4.38
Joyce Kilmer	4-10-2017	4-18-2017	11-JK-DW	RM 115 HALL	13.2
Joyce Kilmer	4-10-2017	4-18-2017	13-JK-DW	RM 109	1.39
Joyce Kilmer	4-10-2017	4-18-2017	14-JK-DW	RM 209 HALL	2.20
Joyce Kilmer	4-10-2017	4-18-2017	15-JK-DW	RM 209 HALL	3.12
Joyce Kilmer	4-10-2017	4-18-2017	16-JK-DW	RM 208 HALL	2.32
Joyce Kilmer	4-10-2017	4-18-2017	17-JK-DW	RM 208 HALL	2.77
Joyce Kilmer	4-10-2017	4-18-2017	18-JK-TL	TEACHERS LOUNGE	6.08
Joyce Kilmer	4-10-2017	4-18-2017	19-JK-DW	RM 217 HALL	23.2
Joyce Kilmer	4-10-2017	4-18-2017	20-JK-DW	RM 217 HALL	28.4
Joyce Kilmer	4-10-2017	4-18-2017	21-JK-DW	APR HALL	2.72
Joyce Kilmer	4-10-2017	4-18-2017	22-ASTM	ASTM BLANK	<1.00
Parkview	4-10-2017	4-17-2017	2-PS-DW	L-107 HALL Duplicate	1.60
Parkview	4-10-2017	4-17-2017	13-PS-DW	L-101 HALL Duplicate	1.97
Parkview	4-10-2017	4-17-2017	18-PS-DW	R-105 HALL Duplicate	2.28
Parkview	4-10-2017	4-17-2017	17-PS-DW	Rm R-104 Duplicate	<1.00
Parkview	4-10-2017	4-17-2017	23-PS-WC	GYM	<1.00
Parkview	4-10-2017	4-17-2017	24-PS-WC	GYM	<1.00
Parkview	4-10-2017	4-17-2017	25-PS-TL	TEACHER LOUNGE	<1.00
Parkview	4-10-2017	4-17-2017	26-PS-DW	RM L-115	3.58
Parkview	4-10-2017	4-17-2017	27-PS-DW	L-117 HALL	4.08
Parkview	4-10-2017	4-17-2017	28-PS-DW	RM L-117	3.84
Parkview	4-10-2017	4-17-2017	29-PS-DW	RM L-112	7.36
Parkview	4-10-2017	4-17-2017	30-PS-DW	RM L-114	24.1
Parkview	4-10-2017	4-17-2017	31-PS-DW	RM L-119	16.3
Parkview	4-10-2017	4-17-2017	32-PS-DW	L-119 HALL	3.53
Parkview	4-10-2017	4-17-2017	33-PS-DW	RM L-121	12.3
Parkview	4-10-2017	4-17-2017	34-ASTM	BLANK	<1.00

Parkview	5-13-2017	5-19-2017	1-PS-DW-L109	Rm L109	33.9
Parkview	5-13-2017	5-19-2017	2-PS-WC-L107	Hall by L107 Duplicate	3.17
Parkview	5-13-2017	5-19-2017	3-PS-WC-L106	Rm L106	<1.00
Parkview	5-13-2017	5-19-2017	4-PS-DW-L107	Rm L107	3.90
Parkview	5-13-2017	5-19-2017	5-PS-DW-L105	Rm L105	4.79
Parkview	5-13-2017	5-19-2017	6-PS-WC-L104	Rm L104	<1.00
Parkview	5-13-2017	5-19-2017	7-PS-DW-L103	Rm L103	12.7
Parkview	5-13-2017	5-19-2017	8-PS-S-SK	Speech Kitchen	2.40
Parkview	5-13-2017	5-19-2017	9-PS-S-OK	Ofice Kitchen	1.1
Parkview	5-13-2017	5-19-2017	10-PS-S SO	Superintendent office	<1.00
Parkview	5-13-2017	5-19-2017	11-P-S-S-NO	Nurse Office (Rm 102)	9.67
Parkview	5-13-2017	5-19-2017	12-PS-S-NB	Nurse bath	<1.00
Parkview	5-13-2017	5-19-2017	13-PS-WC-L101	Hall by L101 Duplicate	3.77
Parkview	5-13-2017	5-19-2017	14-PS-DW-L101	Rm L101	1.96
Parkview	5-13-2017	5-19-2017	15-PS-DW-Panda	Panda Rm	<1.00
Parkview	5-13-2017	5-19-2017	16-PS-DW-R101	Rm R101	1.81
Parkview	5-13-2017	5-19-2017	17-PS-WC-R104	Rm R104 Duplicate	10.6
Parkview	5-13-2017	5-19-2017	18-PS-WC-R105	Hall by R105 Duplicate	4.35
Parkview	5-13-2017	5-19-2017	19-PS-DW-R105	Rm R105	<1.00
Parkview	5-13-2017	5-19-2017	20-PS-FP-K1	Kitchen	50.4
Parkview	5-13-2017	5-19-2017	21-PS-FP-K2	Kitchen	8.2
Parkview	5-13-2017	5-19-2017	22-PS-FP-K3	Kitchen	10.9
Parkview	5-13-2017	5-19-2017	35-PS-DW	Rm R103	3.43
Parkview	5-13-2017	5-19-2017	36-SR	Sun room blank	<1.00

Building	DateCollected	AnalysisDate	Sample ID	Sample Description	Concentration (ppb)
ALL SAMPLES ALL SCHOOLS ARE 2nd DRAW SAMPLES					
Joyce Kilmer	6-28-2017	7-7-2017	3-JK-DW	RM 102 HALL	1.43
Joyce Kilmer	6-28-2017	7-7-2017	19-JK-DW	RM 217 HALL	14.7
Joyce Kilmer	6-28-2017	7-7-2017	20-JK-DW	RM 217 HALL	14.8
Joyce Kilmer	6-28-2017	7-7-2017	BLANK	BLANK	<1.00
Parkview School	6-28-2017	7-7-2017	30-PS-DW	RM L-114	3.56
Parkview School	6-28-2017	7-7-2017	31-PS-DW	RM L-119	3.87
Parkview School	6-28-2017	7-7-2017	20-PS-FP	KITCHEN	1.09
Parkview School	6-28-2017	7-7-2017	2-PS-WC	RM L-107 HALL	<1.00
Parkview School	6-28-2017	7-7-2017	BLANK	BLANK	<1.00

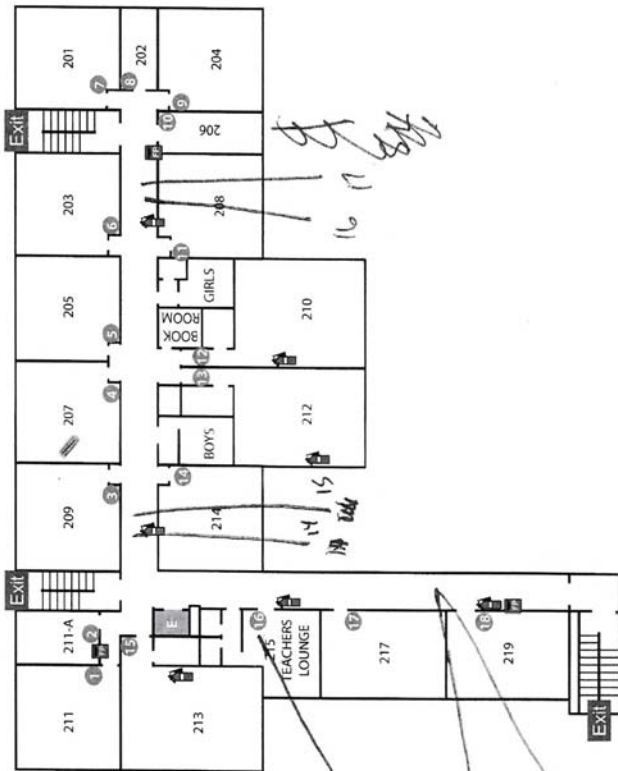


North

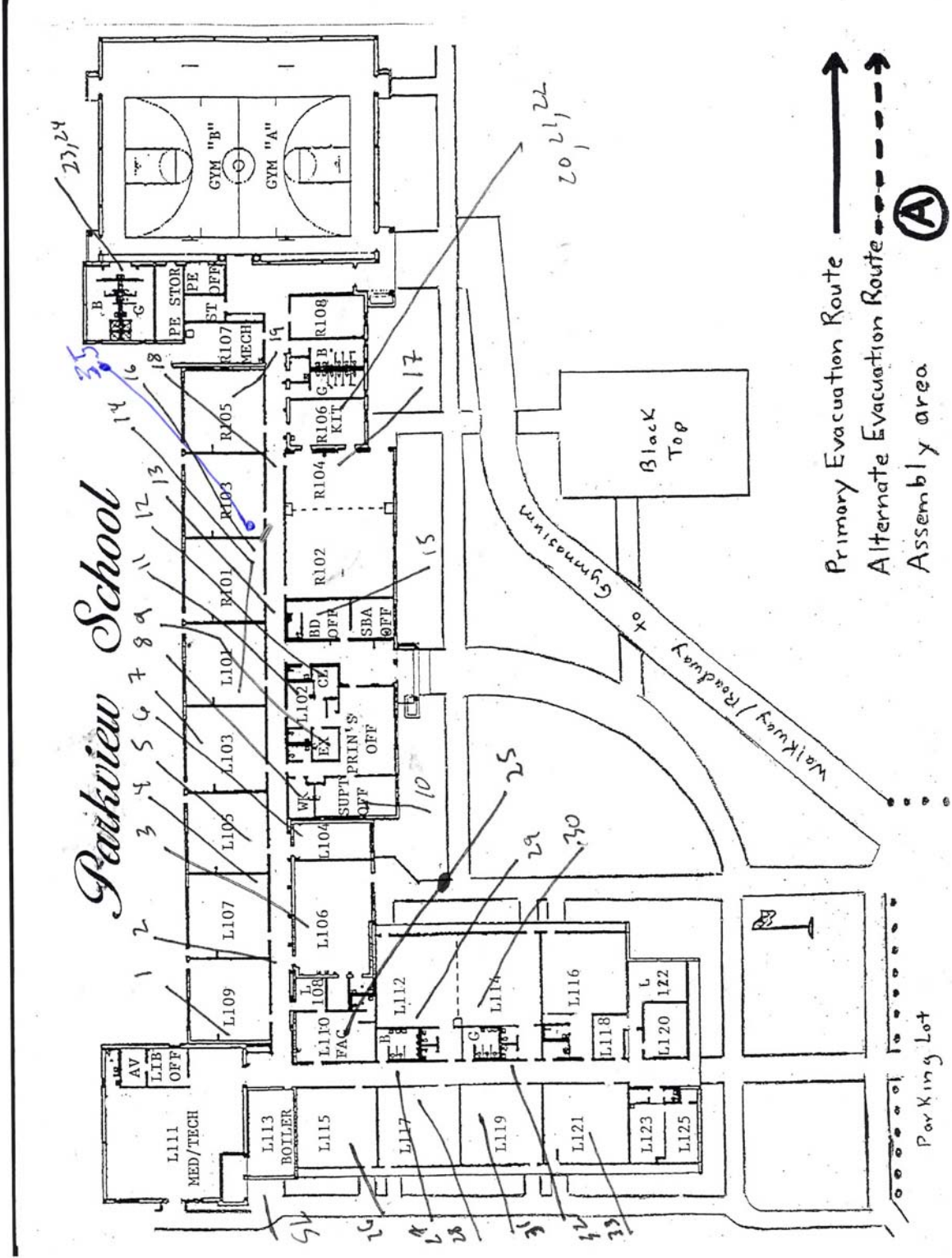
EMERGENCY INFORMATION

Joyce Kilmer School
21 W. Church St.
Milltown, NJ 08850

- Exit Route
- Alternate Exit Route
- You Are Here
- Stairway
- Exit Location
- Fire
- Extinguisher
- Fire Pull / Alarm
- Elevator



Parkview School



Primary Evacuation Route →
 Alternate Evacuation Route - - - - -
 Assembly area (A)

Parking Lot

Appendix E Laboratory Data