

# Instructional Time

Committee on Learning

November 20, 2012

# The Math of Instructional Minutes

<b>Prior to 2011</b>	<b>45min class period x 180 instructional days = 8100 minutes or 135 hrs.</b>
<b>Current Schedule</b>	81 minute class period x 90 instructional days = 7290 minutes or 121.5 hrs.

**What this doesn't type of math does not factor in:**

- **Equity across courses**
- **Passing time**
- **An added class period**
- **Increased flexibility in scheduling**
- **Common planning time for staff**

# Instructional Minutes

Total Instructional minutes	Prior to 2011	Current	2010-11 State Average (High School)	2010-11 Statewide Range (In Hours)
	990.17	1008.17 hours (+18 total)	1010.5	923 - 1172

## Districts of Reference

West Hartford: 924

Ridgefield : 965

Bethel: 1011

Bloomfield: 1029.5

Brookfield: 1052

Lisbon:1172

“If you want to make good use of your time, you’ve got to know what’s most important and then give it all you’ve got.” – Lee Iacocca

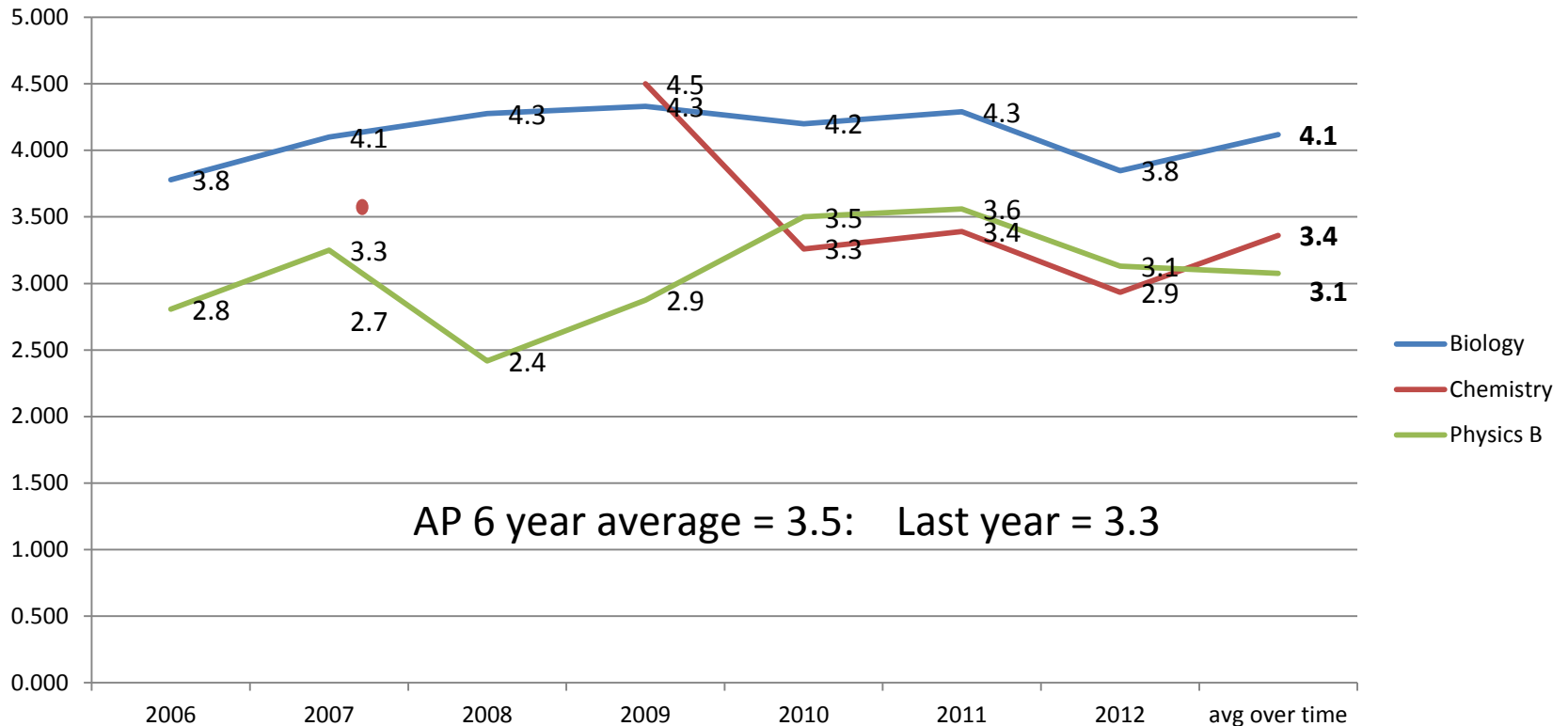
# Total number of Science Sections

	Prior to 2011	Currently	Proposed for 2013
Total Sections of Science	69	73	76
Average Labs per month	24/ month	2011/12: 22/ month	
Adjustments	Spill over time is available for teachers and students. AP classes are backed up to study halls and prep time		

“Time has a wonderful way of weeding out the trivial.” –  
Richard Ben Sapir

# AP Scores

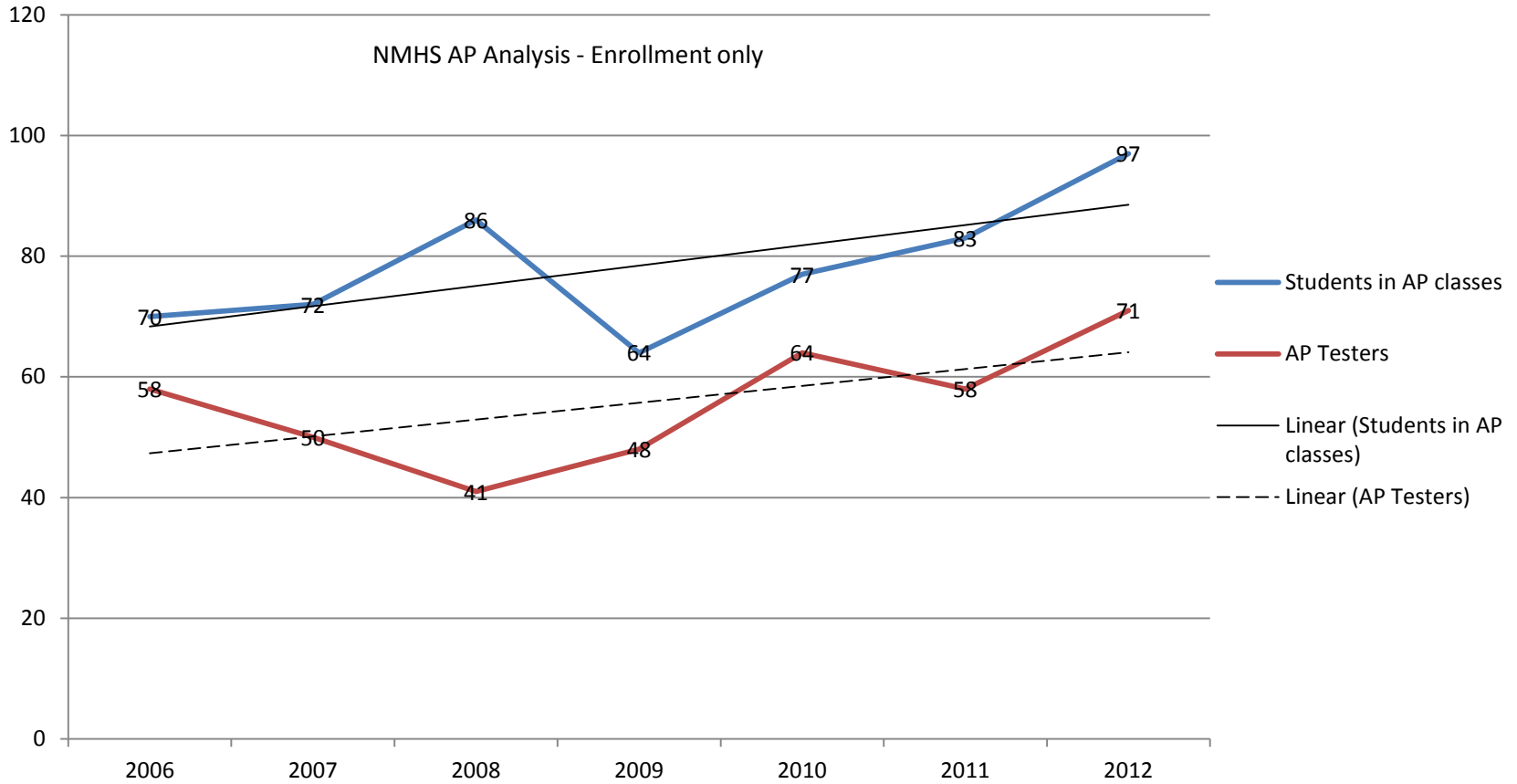
## Over time: 2006-2012



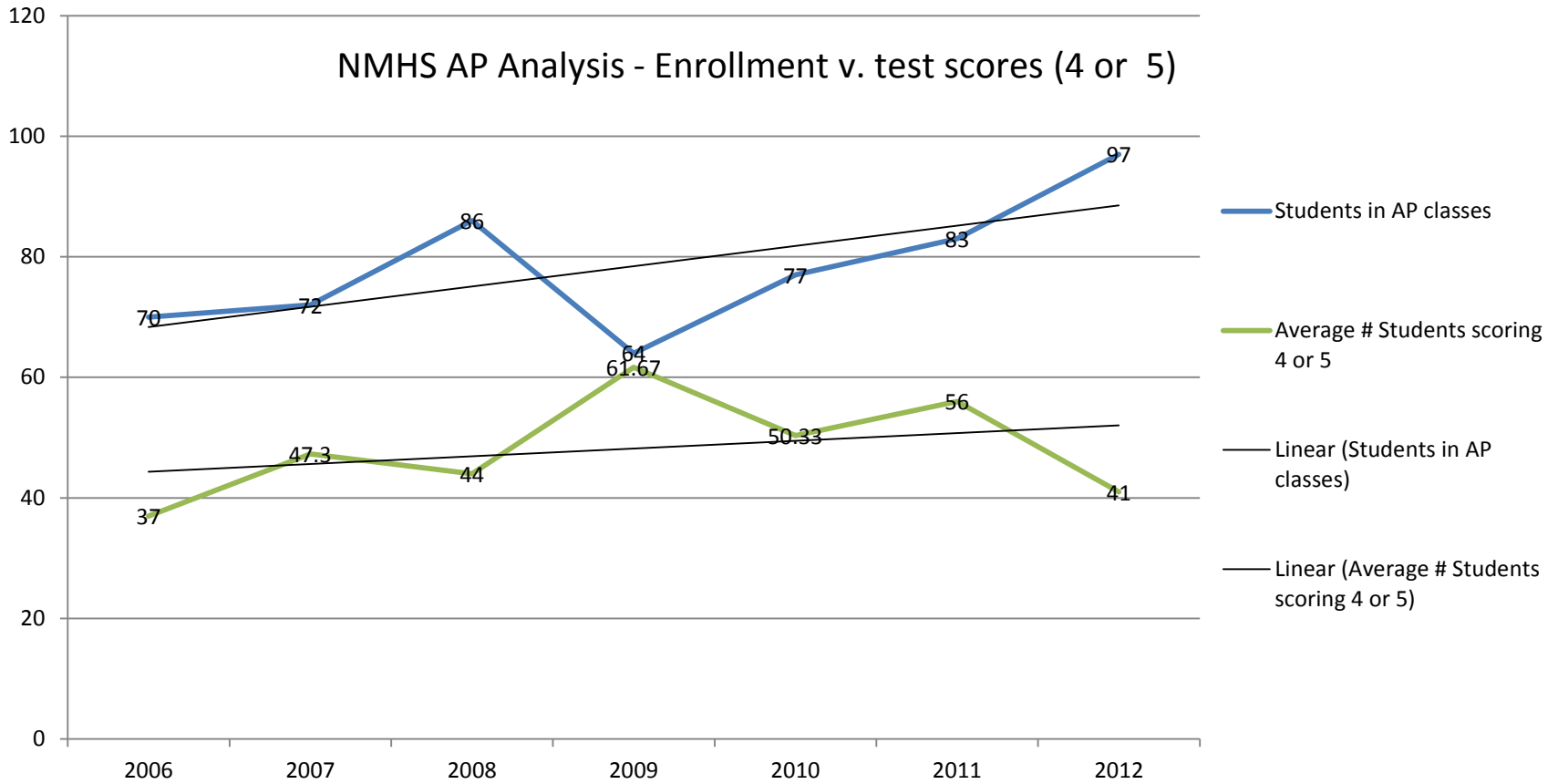
AP 6 year average = 3.5: Last year = 3.3

"It's not enough to be busy, so are the ants. The question is, what are we busy about?" – Henry David Thoreau

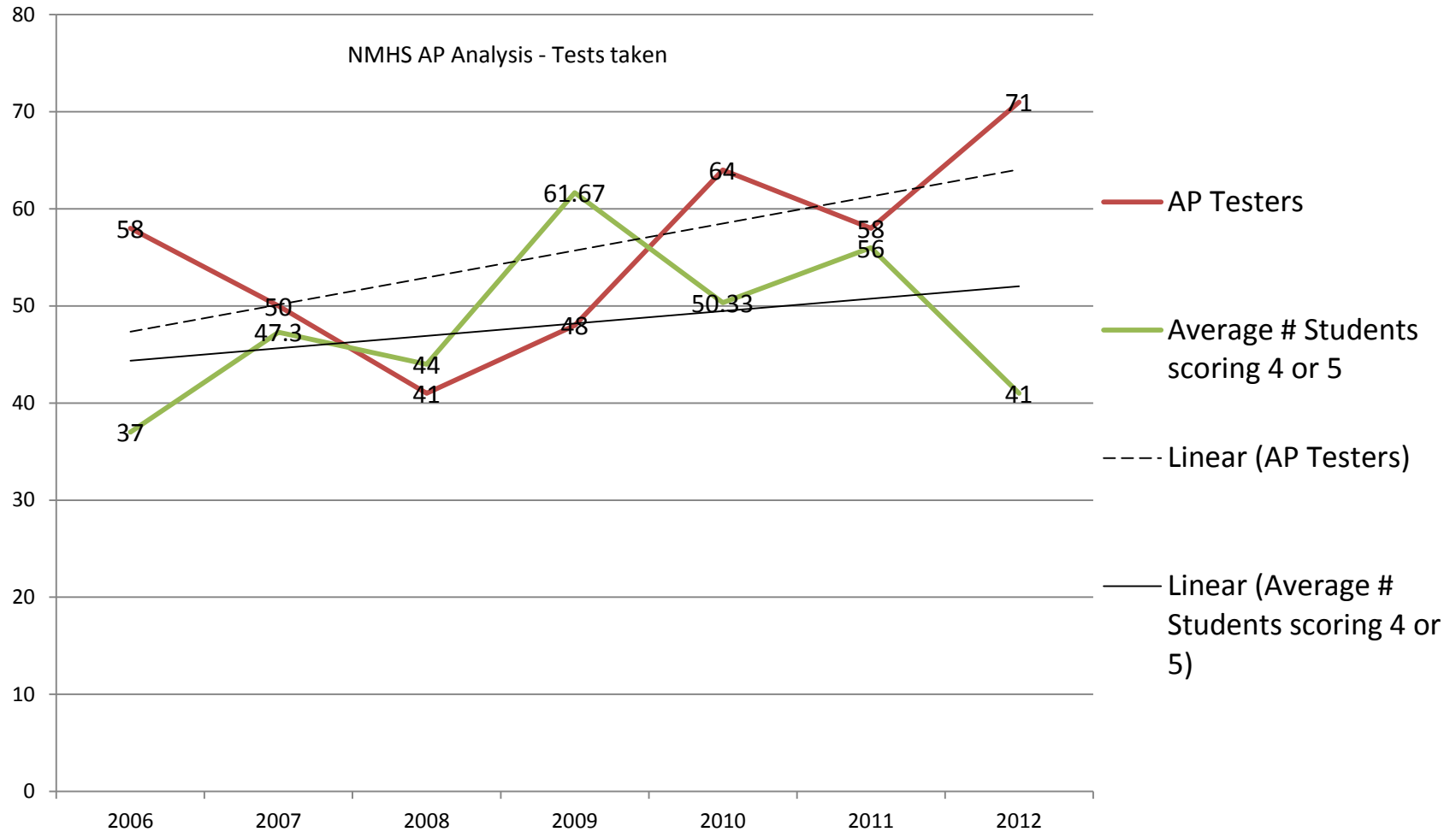
# AP Enrollment



# Enrollment to Score



# Test Takers to Score





# Science

## 8 Year Averages vs. 2012

AP Science Results	When looking at students achieving a 4 or 5	
All Science AP Exams	8 year average of students receiving a 4 or 5	2012
	49.47% (n56)	41.33% (n71)
Biology	70.88%	76%
Physics	35.9%	35%
Chemistry	41.7%	13%
Biology and Physics	53.4%	55.5%

“Don’t be fooled by the calendar. There are only as many days in the year as you make use of. One man gets only a week’s value out of a year while another man gets a full year’s value out of a week.” – Charles Richards