



S I N C E 1 9 4 2

2711 Knott Road • Knoxville, TN 37921

**PROPOSAL**

TO: Oneida Schools 330 Claude Terry Drive Oneida, TN 37841	Proposal No: TT0115GW01
SUBJECT: Replace Hot Water Boiler With Atlas Model A100	DATE: January 21, 2015

Boiler Supply Company offers to install a replacement for the existing Bryan Hot Water Boiler with an Atlas Model A100 Condensing Boiler by Ajax Boiler Inc. This boiler is both very efficient and environmental friendly. Installation and start-up are also offered.

**ITEM 1: ATLAS MODEL A100 HOT WATER BOILER**

**EQUIPMENT**

We offer to supply and install one (1) Atlas Model A100 Hot Water Boiler manufactured by Ace Heating. The boiler is rated for an input of 1,000,000 BTU/hr. The Atlas A100 boiler performs dependably and quietly, offering high efficient for space heating, domestic and process hot water. Modular design, robust controls and low emissions makes this boiler an excellent choice for a hot water boiler.

The offered Atlas Model A100 has the following features:

1. Boiler design is a cylindrical finned water tube coil.
2. Boiler heating surface is copper construction.
3. Copper fin tubes with 1.25" ID.
4. Unit can be used for domestic water service.
5. Fired by natural gas, site pressure required is 5-14" W.C.
6. Input is 1,000,000 BTU/hr.
7. Burner has variable speed and provides full modulation, 7.5:1 turndown.
8. Knit metal fiber burner for high efficiency and low emissions.
9. Thermal efficiency is 90% with inlet water temperature of 100 F and 100% firing rate.
10. Thermal efficiency is 87% with inlet water temperature of 120 F and 100% firing rate.
11. NOx emissions are less than 9 ppm.
12. CO emissions are less than 50 ppm.
13. Boiler designed and manufactured in accordance with ASME Section IV.
14. Maximum allowable working pressure is 160 psi.
15. Maximum allowed water temperature is 210 F.
16. Sealed combustion chamber for increased efficiency and reduces emissions.
17. Venture air inlet provides for fuel and air pre-mixing before the combustion chamber.
18. Fuel-air ratio is controlled by a combination of blower speed and gas control valve.

# **BOILERSUPPLY** S I N C E 1 9 4 2

2711 Knott Road • Knoxville, TN 37921

Page 2 OF 4

19. Flame safe guard controller with integrated operating, modulating and high limits safety controls.
20. Keyboard Display Interface with LCD Panel and 4 button display.
21. Display provides boiler status including: sequence, lockouts, alerts, set points, controlled temperature and flame signal.
22. Alarm and silencer.
23. Dimensions of the boiler cabinet: 29" width; 34" depth; and 54" height.
24. Shipping weight of boiler is approximately 1,000 lbs.
25. Stainless steel jacket.
26. Safety relief valve.
27. Electrical voltage requirements: 120 volt/ 1 phase/ 60 Hertz.
28. Recommend hot water flow rate is 50 GPM.
29. Pressure drop in the HW Boiler for 50 GPM is only 13 feet of head.
30. Condensing Kit to store and process condensate.
31. Circulation Pump is not provided.
32. Exhaust vent size is 8" ID.
33. Lead time until delivery is 6 weeks.
34. Lead times are subject to change and must be verified at time of order entry.

## INSTALLATION

Installation services shall include the following:

1. Order the replacement Atlas boiler.
2. Receive the Atlas boiler and provide temporary storage.
3. Deliver the Atlas boiler to the work site.
4. Disconnect electrical power from the existing Bryan boiler.
5. Disconnect water piping from Bryan boiler.
6. Disconnect the natural gas piping from the Bryan boiler.
7. Disconnect the exhaust stack from the Bryan boiler.
8. Remove the Bryan boiler and dispose.
9. Set the Atlas boiler in place.
10. Connect the new boiler to the existing stack.
11. Connect electrical power to Atlas boiler.
12. Connect water piping to the Atlas boiler.
13. Connect natural gas piping to the Atlas boiler.
14. Commission the Atlas boiler.
15. Train the customer employee on the operation of the Atlas boiler.
16. Clean up work site.

**PRICE, ITEM 1, EXWORKS FACTORY (Freight Included) ..... \$ 31,421.00**



2711 Knott Road • Knoxville, TN 37921

**ITEM 2: STACK FOR CONDENSING BOILER**

We offer to supply and install Model CS Boiler Exhaust Stack by Van Packer. This stack is designed for a Condensing Hot Water Boiler. This stack is a double wall design with one inch air gap. Features of the offered Model CS Stack are as follows:

- 1. Double wall design with one inch air gap.
- 2. Inner material is 24-gauge VP1738 stainless steel.
- 3. VP1738 is suited for condensing conditions.
- 4. Outer shell material is 24-gauge Aluminized Steel
- 5. Insulation is 1" air gap
- 6. Stack has 8" ID.
- 7. Stack height is 21 feet.
- 8. Included is 90 Boot Tee, qty. 1
- 9. Included is Rain Cap, qty. 1
- 10. Approximate lead time until delivery is 3 weeks

**PRICE, ITEM 2, EXWORKS FACTORY (Freight Included) ..... \$ 4,810.00**

If you have any questions, then please contact me. Please see the Boiler Supply Company's Terms and Conditions which are shown below as they are an integral part of this proposal.

Sincerely,

Gene Webb  
Account Manager  
Boiler Supply Company  
(865) 363-3936

**ACCEPTED**

**Company:** \_\_\_\_\_

**By:** \_\_\_\_\_

**Title:** \_\_\_\_\_

# **BOILERSUPPLY** S I N C E 1 9 4 2

2711 Knott Road • Knoxville, TN 37921

Page 4 OF 4

## Boiler Supply Company Standard Terms and Conditions

- As an option, if work is done during overtime or weekends, price will be extra. Any additional labor or parts not included in this quote will be charged on a time and material basis.
- Prices quoted herein do not include Federal, State, and Municipal, Sales, Use, Occupational, Privilege or similar taxes based on or measured by gross proceeds, sales or material cost. If the cost of the aforementioned taxes is incurred by the seller, it will be added to the foregoing prices where applicable.
- Terms of payment are net 30 days for proposals totaling less than \$20,000.00
- Terms of payment for proposals totaling more than \$20,000.00 will require progress payment.
  - Progress payments are indicated below for equipment only proposals:
    - 20% on Order Placement Due Net 30 days from date of invoice
    - 30% on release for production Due Net 30 days from date of invoice
    - 50% upon readiness to ship Due Net 30 days from date of invoice
  - Progress payments when Installation or Labor is required with the supplied equipment:
    - 40% on Order Placement Due Net 30 days from date of invoice
    - 50% on Completion of installation Due Net 30 days from date of invoice
    - 10% on Commissioning/startup or within 10 Days of completion of installation, Whichever occurs first.  
Due Net 30 days from date of invoice
- Prices quoted herein are firm for a period of 30 days from the date of this proposal. In the event we are honored with your order, please acknowledge acceptance of this quotation and terms by signing one copy and return with your purchase order.
- If more than 30 days are required for completion of this project, partial billing will be submitted each month based on the value of labor, materials and equipment incorporated in the installation and/or materials and equipment delivered to the job site prior to the invoice date
- The installation and operation of the above described device must comply with applicable laws, rules and regulations. The Chief Boiler Inspector in each state is the Jurisdictional Authority for the administration and enforcement of the requirements in his state. If you have any doubts as to compliance, please contact the Chief Boiler Inspector for the state in which the device is to be installed.
- EXWORKS: The purchaser is responsible for the equipment once it has been loaded for delivery at the factory. The purchaser receiving the items listed above is responsible for all Coordination of delivery and unloading.

*Boiler Supply Company will provide the purchasers contact information to the freight company and provide the purchaser with the freight carrier information and tracking # if available.*

*Boiler Supply Company is not responsible for any charge, fees or penalties arising from delays in manufacturing, shipment, delivery or coordination of delivery.*



**Cookeville Heating & Cooling Services, LLC**

347 East Stevens Street • Cookeville, TN 38501-3541

931-528-5514 • 931-526-2408 (Fax)

**PROPOSAL**

**Date: January 9, 2015**

PURCHASER: Oneida School Board	PHONE:
ADDRESS: 175 Monogard dr	CITY: Oneida TN
JOB NAME: Elementary School	PHONE:
JOB ADDRESS:	CITY: SAME

**David**

Boiler replacement

Remove Bryan 900MBH boiler and replace with a Lochivar 800MBH 94% efficient boiler. Reconnect to the existing gas, electrical and water piping. Modify flue and water piping as needed to make all connection. Includes all material, labor, start up and check operation.

Price \$ 27,900.00

Lochinvar KNIGHT KBN801 Heating Boiler natural gas fired with 800 000 Btu/Hr input 752 000 Btu/Hr output. Condensing design with up to 94.0% Thermal Efficiency 5:1 Turndown ASME Stainless Steel Heat Exchanger Direct Spark Ignition ASME pressure relief valve PVC Venting SMART SYSTEM Control Password Security Natura/LP gas Conversion Kit Outdoor Reset Sidewall Vent Terminals 0-10 Vdc input Contacts on any Failure 3 Pump Control Pump Relay w/ Freeze Protection Low NOx operation.

Upon completion of job

TERMS

//SIGNED//

ACCEPTED BY

DATE

JERRY DRAPER, ACCOUNT MANAGER

Any additional repairs will be billed on a time and material basis.

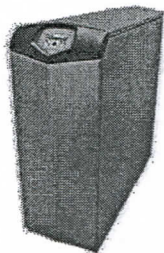
This proposal is valid for 10 days

ALL LABOR ON REPAIR WORK WILL BE WARRANTIED FOR A PERIOD OF 90 DAYS UNLESS OTHERWISE STATED. ALL PARTS WILL BE WARRANTIED PER MANUFACTURER'S WARRANTY. IT IS FURTHER UNDERSTOOD THAT IN THE EVENT IT IS NECESSARY FOR THE SELLER TO EMPLOY AN ATTORNEY TO ENFORCE THE SELLER'S RIGHTS IN ANY PARTICULAR IN CONNECTION WITH THE TERMS OF THIS AGREEMENT, THEN IN SUCH EVENT THE PURCHASER WILL BE RESPONSIBLE FOR ALL EXPENSES INCLUDING BUT NOT LIMITED TO ATTORNEY'S FEES NECESSARY TO ENFORCE THIS AGREEMENT.



FREE SHIPPING ON ORDERS OVER \$300

Home Radiant Heat & Heating Supplies Heating Supplies Boilers High Efficiency Gas Boilers Lochinvar Boilers...



## 654,000 BTU Output Knight XL High Efficiency Boiler

SKU: KBN801 Brand: Lochinvar



**FREE SHIPPING  
On This Item**

Be the first to Write a Review

QTY	PRICE
<input type="text" value="1"/>	\$17,349.95 / each

In Stock! Ships in 24-48 Hours (5 Available)

Overview Reviews Product Q & A Videos

### Resources

- [BTU Calculator](#)
- [Brochure](#)
- [Product Overview](#)
- [Submittal Sheet](#)
- [Install Instructions](#)
- [User Guide](#)
- [Designer Guide](#)
- [Wiring Guide](#)
- [Service Manual](#)
- [Replacement Parts List](#)
- [Pump Selection Chart](#)
- [Warranty Info](#)

### Specs

<b>Fuel Type:</b>	Natural Gas
<b>Efficiency:</b>	94%
<b>System Type:</b>	Hydronic (Water)
<b>Features:</b>	Direct Vent Condensing EI/Spark Ignition
<b>Depth (Inches):</b>	45-1/4"
<b>Vent Size:</b>	6"
<b>Water Connection:</b>	2"
<b>BTU Input:</b>	800000
<b>DOE Rating:</b>	752000
<b>IBR Rating:</b>	654000
<b>Boiler Type:</b>	High Efficiency

### Description for Lochinvar KBN801

#### Lochinvar's Knight XL Boilers Feature:

- Modulating Burner With 5:1 Turndown
- ASME Stainless Steel Heat Exchanger
- Direct-Vent Sealed Combustion
- 50 psi Relief Valve
- Adjustable High Limit With Manual Reset
- Flow Switch
- Temperature & Pressure Gauge
- Direct-Spark Ignition
- Low NOx Operation
- Low Gas Pressure Operation
- Zero Clearances to Combustibles
- Easy Access Terminal Strip
- Natural to LP Conversion Kit
- Inlet & Outlet Temperature Sensors
- Low Water Flow Indication
- Domestic Hot Water Prioritization
- Adjustable Leveling Legs
- Sidewall Vent Terminals
- On/Off Switch
- Contact On Any Failure
- SMART SYSTEM Digital Operating Control

#### SMART SYSTEM Digital Operating Control Features:

- 2 line, 16 Character LCD Display
- Password Security
- Built In Cascading Sequencer
- Building Management System Control
- 0-10 VDC Input Control
- Outdoor Reset

Vent Type: Direct Vent  
 Width (Inches): 15-1/2"  
 Height (Inches): 42.5  
 Gas Connection: 1"

- Night Setback
- Three Pump Control (System, Boiler & DHW)
- Pump Relay With Freeze Protection
- Product Service Indicator
- Field Connection Versatility
- Optional PC Or Pocket PC Software

**Product Specifications:**

- Floor Standing
- Gallon Capacity: 5.7
- Heating Surface (Sq.Ft.): 65.3
- Water Connections: 2"
- Drain: 3/4"
- Max Working Pressure: 160 psi
- Number of Relief Valves: 1
- Relief Valve Size: 3/4"
- Relief Valve Pressure Rating: 50 psi
- Gas Inlet Connection: 1"
- BTU/Hr Input: 800,000
- BTU/Hr Output (High Fire): 752,000
- BTU/Hr Output (Low Fire): 150,400
- Voltage/Heater: 120 V
- Voltage/Control: 24 V
- Total Amps: 2.7 A
- Number of Electrical Connections: 1
- Dimensions (H x W x D): 42-1/2" x 15-1/2" x 45-1/4"
- Vent Size: 6"
- Vent Category: IV
- Vent Material: PVC
- Shipping Weight: 440 lb

*PLEASE NOTE: The product weighs 405 lbs. and may require the use of a lift gate. If you do require a lift gate at your delivery, you'll have the option to add this FREE of charge when you checkout.*

**You May Also Need**

Page 1 of 7



**1 qt. Boiler & Heating System Cleaner**

SKU: 35206  
 Brand: Hercules

- \$12.25 / each
- \$142.20 / box  
 12 x \$11.85

In Stock! (34 Available)  
 Ships in 24-48 Hrs



**1 lb. Boiler Solder (Powdered Stop Leak)**

SKU: 30310  
 Brand: Hercules

- \$12.75 / each
- \$148.20 / box  
 12 x \$12.35

In Stock! (30 Available)  
 Ships in 24-48 Hrs



**1 Gal. Heavy Body Furnace Cement**

SKU: 35526  
 Brand: Hercules

- \$17.25 / each
- \$66.60 / box  
 4 x \$16.65

In Stock! (38 Available)  
 Ships in 24-48 Hrs



**1/2 Gal. Heavy Body Furnace Cement**

SKU: 35521  
 Brand: Hercules

- \$9.45 / each
- \$54.90 / box  
 6 x \$9.15

In Stock! (2 Available)  
 Ships in 24-48 Hrs



Enter your email address

**Customer Service**  
 Contact Us  
 Shipping Policy  
 Returns & Exchanges  
 Low Price Guarantee  
 FAQs  
**About Us**  
 Meet The Team  
 Quote of the Day  
 Testimonials  
 SupplyHouse Gear  
 Careers  
 SupplyHouse Coupons

**Plumbing Supplies**  
 Access Doors  
 AO Smith Water Heaters  
 Aqua-Pure Water Filters  
 Backflow Preventers  
 Ball Valves  
 Bradford White Water Heaters  
 Copper Fittings  
 ProPress Fittings  
 PVC Fittings  
 Steibel Eltron Tankless Heaters  
 Sump Pumps  
 Takagi Tankless Heaters

**Heating Supplies**  
 Baseboard Heaters  
 Buderus Boilers  
 Burnham Boilers  
 Extrol Tanks  
 Grundfos Pumps  
 Honeywell Thermostats  
 Honeywell Zone Valves  
 Radiant Heat  
 Taco Pumps  
 Triangle Tube Boilers  
 Weil Mclain Boilers  
 White Rodgers Thermostats

**PEX**  
 PEX Fittings  
 PEX Manifolds  
 PEX Plumbing  
 PEX Tools  
 PEX Tubing for Heating  
 PEX Tubing for Plumbing  
**HVAC - Air Conditioning**  
 Fantech Ventilation Fans  
 LG Mini-Split Air Conditioners  
 Line Sets  
 Panasonic Ventilation Fans  
 Goodman Air Conditioners

**Popular Brands**  
 AO Smith  
 Bell & Gossett  
 Bradford White  
 Fantech  
 Grundfos  
 Honeywell  
 Taco  
 Triangle Tube  
 Uponor  
 Viega  
 Watts  
 Weil Mclain

**Connect With Us**

Subscribe to our Channel  
 Like Us on Facebook  
 Visit Our Blog

**Count On Our Customer Service**



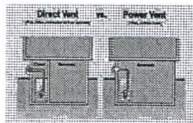
**Shop With Confidence**



At SupplyHouse.com, our goal is to bring you the highest quality plumbing, heating and HVAC supplies at competitive prices. Our product catalog includes PEX Plumbing Supplies, Radiant Heat Supplies, VisionPro Honeywell Thermostats, Taco pumps and mini-split air conditioners. If there are items you are looking for but can't find on our website, please contact our Customer Service Representatives & we will do our best to find what you need.

© 2015 SupplyHouse.com Terms of Use | Privacy Policy | Site Map

close



Shopping For a Boiler





Interstate Mechanical Contractors, Inc.

QUOTATION

3200 HENSON ROAD • P.O. BOX 50610 • KNOXVILLE, TENNESSEE 37950-0610

TELEPHONE (865) 588-0180  
FAX (865) 602-4124

TO : Oneida Special Schools

DATE 1/27/2015

Attn : David Mayes

JOB Hot Water Boiler Change Out

LOCATION Oneida , Tennessee

Fax# \_\_\_\_\_

ARCHITECT N/A

NOT RESPONSIBLE FOR DELAYS BY  
REASON OF STRIKES, ACCIDENTS OR  
CAUSES BEYOND OUR CONTROL.

PRICES SUBJECT TO CHANGE WITHIN 30 DAYS

ORDERS FOR SPECIAL MATERIAL OR EXTRA ACCEPTED  
WITH THE DISTINCT UNDERSTANDING THAT THEY  
ARE NOT SUBJECT TO CANCELLATION.

DESCRIPTION

Thanks for the opportunity to submit you the following proposal. We purpose to furnish materials and labor for the following scope of work.

Scope of Work

1. Remove one existing Bryan Boiler.
2. Provide and install one new Lochinvar # CHN0752 750MBH input boiler.
3. Provide Labor and materials to replace the existing exhaust stack with a new 8" stack.
4. Rework existing HWS & HWR piping to fit new boiler.
5. Re-insulate piping damaged by install.
6. Provide our own electrical disconnect and reconnects.

Price \$28,513.00

Qualifications

1. Clear access to work area.
2. Based normal work hours M-F.
3. No painting.
4. No test and balance of system.
5. No engineering or stamped drawings.
6. As of 1-23-15 there was two of these boilers in stock in Nashville, Tn.

TERMS Net 30

Accepted By: \_\_\_\_\_

Very truly yours,

Signed: \_\_\_\_\_  
Kenneth W. Wade



**COPPER-FIN II®  
BOILER  
Submittal Sheet  
CHE-Sub-10a**

**COPPER-FIN II® GAS BOILER (MODELS 402-2072)**

**JOB NAME** \_\_\_\_\_  
**LOCATION** \_\_\_\_\_  
**ENGINEER** \_\_\_\_\_  
**MECH. CONTRACTOR** \_\_\_\_\_  
**MODEL NO.** \_\_\_\_\_  
**TYPE GAS** \_\_\_\_\_  
**Btu/hr INPUT** \_\_\_\_\_ **Btu/hr OUTPUT** \_\_\_\_\_  
**NOTES**

**STANDARD FEATURES**

- › 85% Thermal Efficiency (AHRI Certified)
- › Proportional Firing up to 4:1 Turndown
  - › Hot Surface Ignition
  - › Low NOx Operation
  - › Sealed Combustion
  - › Low Gas Pressure Operation
- › Vertical & Horizontal Venting
  - › Category I Venting
    - › Double Wall "B" Vent Material
  - › Category IV Venting
    - › AL29-4C Stainless Steel Vent Material
- › ASME Copper Finned Tube Heat Exchanger
  - › ASME Certified, "H" Stamped
  - › Gasketless design
  - › 160 psi working pressure
- › On/Off Switch
- › Combustible Floor Rated (CH 0992 - 2072)
- › Adjustable High Limit w/ Manual Reset
- › Flow Switch
- › Low Air Pressure Switch
- › Inlet & Outlet Temperature Sensors
- › Easy Access Terminal Strips
- › Downstream Test Cocks
- › 50 psi ASME Relief Valve
- › Temperature & Pressure Gauge
- › 1 Year Warranty on Parts (See Warranty for Details)
- › 10 Year Limited Warranty (See Warranty for Details)

**OPTIONAL EQUIPMENT**

- Alarm
- High & Low Gas Pressure Switches w/ Manual Reset
- Cupro-Nickel Heat Exchanger
- Low Water Cut Off, Probe Type w/ Manual Reset & Test
- Modbus Communications
- BMS Gateway - BACnet or LonWorks
- Combustible Floor Kit (CH 0402-0752)
- Stack Frame
- Low Temperature Protection Valve
- 30 psi ASME Relief Valve
- 75 psi ASME Relief Valve
- 100 psi ASME Relief Valve
- 125 psi ASME Relief Valve
- 150 psi ASME Relief Valve

**SMART SYSTEM™ FEATURES**

- › SMART SYSTEM™ Operating Control
- › 2 Line/16 Character LCD Display
- › Built in Cascading Sequencer for up to 8 boilers
- › Front End Loading Capability with Crest or Knight Boilers
- › Building Management System Integration with 0-10 VDC Input
- › Outdoor Reset Control with Outdoor Air Sensor
- › Password Security
- › Domestic Hot Water Prioritization
- › Low Water Flow Control & Indication
- › Inlet & Outlet Temperature Readout
- › Freeze Protection
- › Service Reminder
- › Time Clock
- › 0-10 VDC Rate Output
- › Condensing Protection
- › 0-10 VDC System Pump Speed Input
- › Data Logging
  - › Hours Running, Space Heating
  - › Hours Running, Domestic Hot Water
  - › Ignition Attempts
  - › Last 10 Lockouts
- › Programmable System Efficiency Optimizers
  - › Night Setback
  - › Anti-Cycling
  - › Outdoor Air Reset Curve
  - › Boost Temperature & Time

- › Three Pump Control
  - › System Pump
  - › Boiler Pump
  - › Domestic Hot Water Pump
- › High Voltage Terminal Strip
  - › 120 VAC / 60 Hertz / 1 Phase Power Supply
  - › Pump Contacts with Pump Relay
- › Low Voltage Terminal Strip
  - › 24 VAC Auxiliary Device Relay Output - Louvers
  - › Auxiliary Proving Switch Contacts - Louvers
  - › 3-way Valve Contacts for Low Temperature Protection
  - › Alarm on Any Failure Contacts
  - › 0-10 VDC System Pump Speed Contacts
  - › Runtime Contacts
  - › DHW Thermostat Contacts
  - › DHW Tank Sensor Contacts
  - › Unit Enable/Disable Contacts
  - › System Sensor Contacts - Supply and Return
  - › Outdoor Air Sensor Contacts
  - › Contacts for Air Louvers
  - › Contacts on Any Failure
  - › Cascade Contacts
  - › 0-10 VDC BMS External Control Contact
  - › 0-10 VDC Rate Contacts

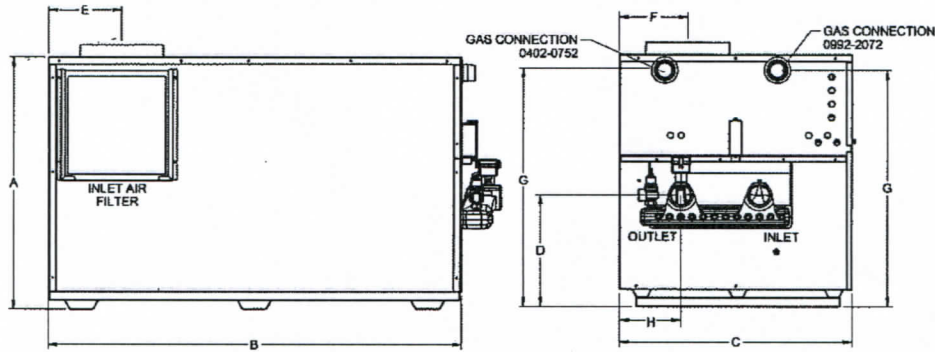
**FIRING CODES**

- M7 Firing Code - California Code
- M9 Firing Code - Hot Surface Ignition with Electronic Supervision
- M13 Firing Code - CSD1 / Factory Mutual / GE Gap

**CERTIFICATIONS**

ANSI Z21.13/CSA 4.9 certified  
 South Coast Air Quality Management District  
 Texas Commission on Environmental Quality

# Copper-Fin II® Gas Boiler Dimensions & Specifications



Copper-Fin II Heating Boiler					Dimensions & Specifications												
Model Number	Input MBH	Thermal Efficiency	Net AHRI Output Rating		A	B	C	D	E	F	G	H	Vent Size	Air Inlet	Gas Conn	Shipping Weight	
			MBH	MBH													
CHN0402	399	85%	339	295	31-1/2"	37-3/4"	22-1/4"	12-1/2"	7"	7"	29"	6-1/2"	6"	6"	1-1/4"	378	
CHN0502	500	85%	425	370	31-1/2"	45-1/2"	22-1/4"	12-1/2"	7"	7"	29"	6-1/2"	6"	6"	1-1/4"	414	
CHN0652	650	85%	553	481	31-1/2"	56-3/4"	22-1/4"	12-1/2"	8-1/2"	8-1/4"	29"	6-1/2"	8"	8"	1-1/4"	500	
CHN0752	750	85%	638	555	31-1/2"	64"	22-1/4"	12-1/2"	8-1/2"	8-1/4"	29"	6-1/2"	8"	8"	1-1/4"	543	
CHN0992	990	85%	842	732	36"	48-1/4"	33-1/2"	15-3/4"	8-1/2"	8-1/2"	33-3/4"	8-3/4"	10"	10"	2"	773	
CHN1262	1,260	85%	1,071	931	36"	58-1/2"	33-1/2"	15-3/4"	10-1/2"	9-1/2"	33-3/4"	8-3/4"	12"	12"	2"	863	
CHN1442	1,440	85%	1,224	1,064	36"	68-3/4"	33-1/2"	15-3/4"	10-1/2"	10-1/2"	33-3/4"	8-3/4"	12"	12"	2"	965	
CHN1802	1,800	85%	1,530	1,330	36"	82-1/4"	33-1/2"	15-3/4"	11"	11"	33-3/4"	8-3/4"	14"	12"	2"	1,100	
CHN2072	2,070	85%	1,760	1,530	36"	92-1/2"	33-1/2"	15-3/4"	11"	11"	33-3/4"	8-3/4"	14"	12"	2"	1,219	

Notes: Change 'N' to 'L' for LP gas models. No deration on LP models. Water connections for models CH 0402-0752 are 2" NPT on 6-1/2" centers. Header increases "B" dimension 3-1/2" for models CH 0402-0752 and 6-1/4" for models CH 0992-2072. Water connections for models CH 0992-2072 are 2-1/2" NPT on 11-1/4" centers. Performance data is based on manufacturer test results.

## Venting Options

- Aire-Lock™ Direct Vent Sealed Combustion
- DirectAire® Vertical
- DirectAire® Vertical w/ Sidewall Inlet
- Outdoor Installation
- Power DirectAire® Horizontal
- Powered Side Wall
- Sidewall



Lochinvar, LLC  
 300 Maddox Simpson Parkway  
 Lebanon, Tennessee 37090  
 P: 615-889-8900 / F: 615-547-1000  
 www.Lochinvar.com

