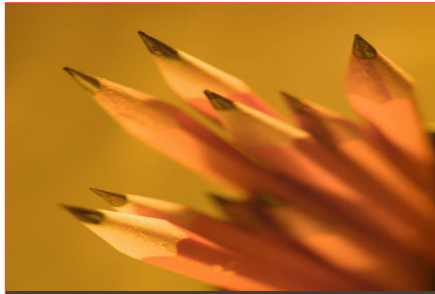


Common Gifted Characteristics:

The following gifted characteristics were noted by Janice Szabos:

- Asks questions
- Highly curious
- Mentally & physically involved
- Plays around but tests well
- Discusses in detail; elaborates
- Shows strong opinions
- Already knows information
- 1-2 repetitions for mastery
- Constructs abstractions
- Prefers adults
- Initiates projects
- Creates a new design
- Enjoys learning
- Manipulates information
- Inventor
- Good guesser
- Thrives on complexity
- Keenly observant
- Highly self-critical

Do you know students who have these characteristics? Contact the gifted teacher at your child's school. We have a wonderful program for your child!



Mission Statement

The mission of Philadelphia Public School District's Intellectually Gifted program is to provide a safe and incomparable learning environment that strives to address the unique needs of students identified as intellectually gifted. The purpose of the program is to assist these intellectually gifted students in the development of their talent potential through appropriate educational experiences and to encourage and respond to the diverse talents of these students without regard to culture, racial, and ethnic backgrounds, or socioeconomic group.



Gifted Contact Person

FOR MORE INFORMATION,
CONTACT:

Mrs. Jennifer Bounds
Philadelphia Elementary School
601-656-1623
jbounds@phillytornadoes.com



Philadelphia
Public School
District's

INTELLECTUALLY GIFTED PROGRAM



Serving eligible
Intellectually Gifted
students in grades 2-8



The basic goals for the gifted education program are to:

- 1) Develop higher order and creative thinking skills
- 2) Strengthen communication skills
- 3) Expand student interests & strengths through research skills
- 4) Provide an environment conducive to the development of autonomous learning
- 5) Promote self-esteem, self-direction, leadership skills, and group dynamics
- 6) Develop an appreciation and understanding of different cultures, environments, values, thoughts, and philosophies
- 7) Increase knowledge and appreciation of great literature, music, performing and visual arts, and people
- 8) Promote in-depth studies in careers
- 9) Initiate exploration of the worlds of science, futurism, and decision-making
- 10) Increase awareness of responsibility to self, to others, and to the school.

PPSD Intellectually Gifted Program

Philadelphia Public School District's Intellectually Gifted program is provided for any eligible student in grades 2-8 based on the Mississippi Department of Education (MDE) guidelines. Additionally, gifted students moving into grades 9-12 are afforded the opportunity to take Advanced Placement (AP) courses, accelerated courses, dual credit courses through East Central Community College (ECCC), and/or distance learning classes (as available). More information on the program can be found on the district's website at <http://www.phillytornadoes.com>

Each week, the gifted education students have, at a minimum, five hours of gifted instruction based on the PPSD Gifted Education Instructional Management Plan.

The district's Intellectually Gifted program will undergo an annual evaluation process including input from all stakeholders. The individual input will be maintained in a confidential manner. An annual report will be made, however, for use in planning and program improvement.

The program's student identification process includes referrals from multiple sources, including parents, teachers, students, and others who have knowledge of the child. All first graders are screened in the spring semester of each school year as potential recipients for gifted education services. The student assessment process utilizes multiple measures deemed appropriate for each student, including students with limited English proficiency. All assessment instruments used are reliable and valid for identifying gifted students and are in compliance with MDE requirements.