

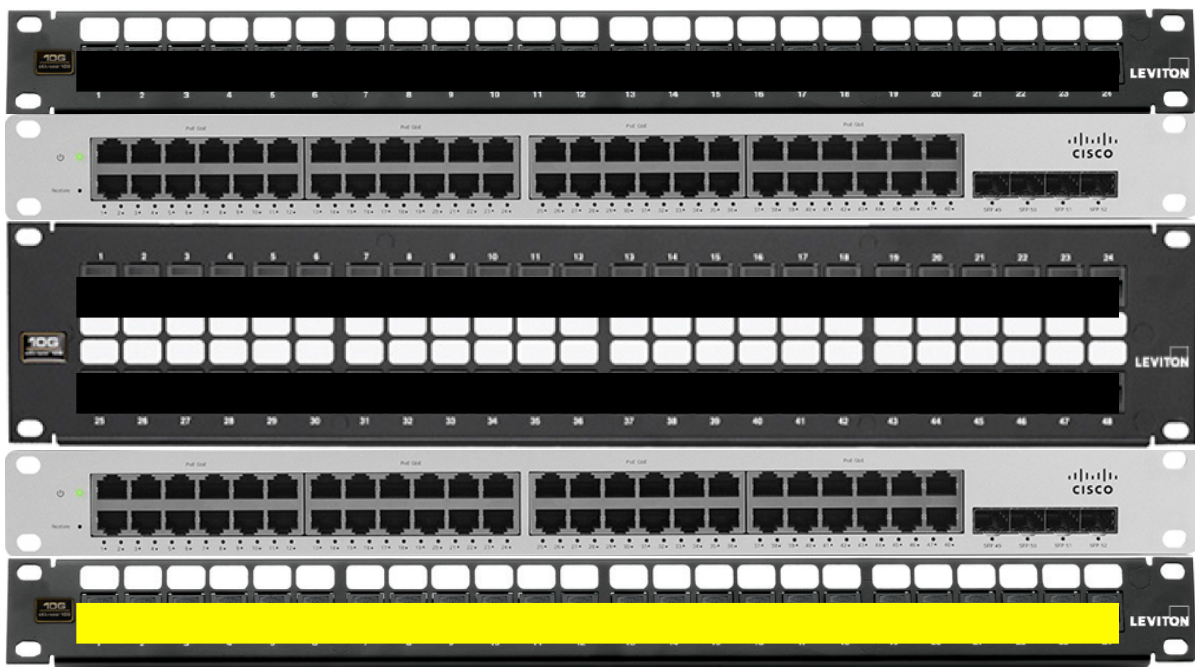
Questions for PCSD RFP_2019_001

1. Are Vendors responsible for re-terminating and testing new and existing cable as part of the closet cleanup?

During the walk through I stated that only new cable will need to be identified. However, after reviewing the RFP and the expectation of PCSD all cabling will need to be re-terminated and tested during the closet cleanup. This will require new patch panels for all cabling. PCSD is expecting switches and cabling to be mounted in the racks a certain fashion including color coded patch cables in order to simplify ongoing support of infrastructure. In order to do this it will require moving existing cabling and adding new cabling in a uniform fashion. See Switch Rack Layout Example

Switch Rack Layout

Black = Data Yellow = Wireless



2. Is ISO 9001 a requirement for submitting a bid?

In section 1.11 Company Requirements of the RFP it states Vendor must have an ISO 9001.

Updated: 1-15-2019

3. Clarification question regarding ISO 9001 requirement?

The requirements in question are common industry standard requirements. It is the expectation of PCSD that we will receive a quality installation and service and support after the sale. These requirements are listed in the RFP to give PCSD the assurance that our expectations will be met. PCSD feels that these requirements are necessary in order to be able to respond to the full scope of the RFP which includes Cabling (Copper and Fiber), Wireless Access Points, and Switches. The bids will be evaluated based on the requirements listed in the RFP.

Updated: 1-16-2019

Question 4

33	Configuration/Installation of Switches
33	Labor Installation of Switch

Are we to put the cost for network configuration of the switch network in the first one and the actual physical installation of the switches in the 2nd one?

Question 5

122	Labor Installation of Access Point
-----	------------------------------------

There is only 1 line item listed for Access Points – so are we to include the cost for the physical install of the APs and the wireless configuration on this line item?

Answer for Question 4 & 5

The Description of Installation Services has a minor clerical error. It provides 2 locations for the cost of labor for installation of switches. Installation of switches may be interpreted differently by each vendor based on the solution quoted. As long as a total cost for labor can be determined for switching and wireless configuration/installation you may quote it however you choose. The breakdown listed in the pricing sheet is to assist PCSD in ITEM21 submittals. You may quote labor for install and configuration together or separately for both switching and wireless.

Question 6

***hrs	Program Management
--------	--------------------

What are you wanting for this line item?

The cost for Program Management does not list a specific number of hours because PCSD does not have any information as it pertains to each vendors determination of how many actual hours will be needed for Program Management. It is the submitting vendors responsibility to determine how many hours will be needed for the project and provide a cost based on those hours.

Updated 1-22-19