



5 – Year Facilities Plan - ESPLOST

**EXCELLENCE IS
STANDARD!**

***Superintendent, Terri DeLoach
Board of Education***

**Linda Zechmann, Chair · Duward Boatright,
Vice- Chair · Jimmy Lynn · Jack Saussy · David
Williams**

Vote on May 24



- Not a new tax
- Continuation of e-SPLOST
- Every 5 years requires voter approval
- Critical for our school district operations
- Helps keep local property taxes at a lower rate

What are e-SPLOST funds used for?



- Construction of new school buildings
- Maintenance and repair of school buildings
- Maintenance and repair of school property
- Equipment to maintain the schools
- Technology equipment & software
- Buses and maintenance vehicles

Vote on May 24



- Main Project: Construction of a new PCHS
- Approve bonds or “mortgage” for new PCHS
- Continue maintenance of existing facilities
- Purchase of technology for classrooms
- Purchase of buses for school bus fleet



**What projects have
been completed with
current e-SPLOST ?**

HS MULTI-PURPOSE BUILDING



HS MULTI-PURPOSE BUILDING



HS MULTI-PURPOSE BUILDING

BEFORE



AFTER



HS TENNIS COURTS



BEFORE



AFTER

HS PARKING & STORM WATER

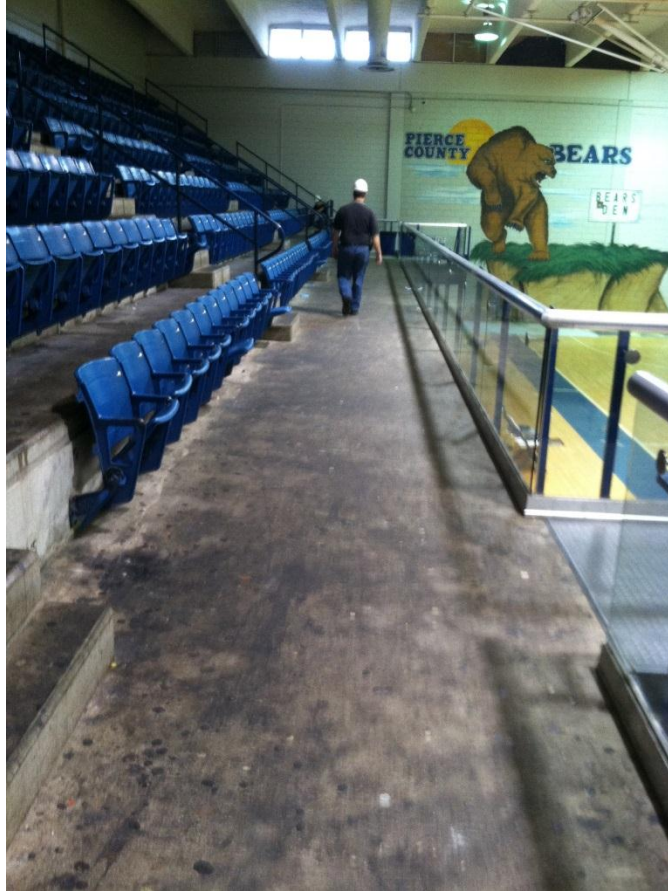


BEFORE

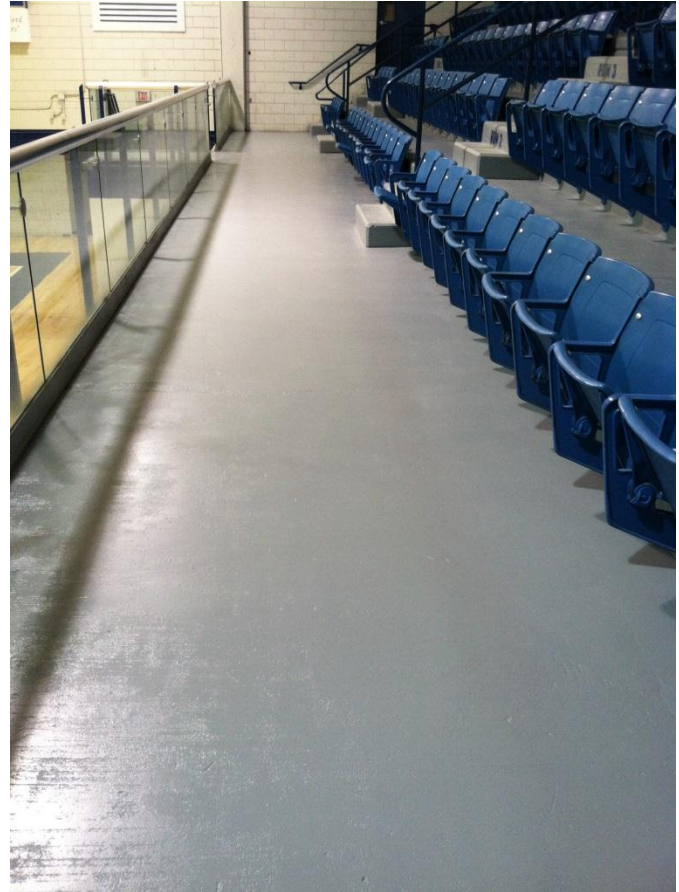
AFTER



HS GYM



BEFORE



AFTER

HS GYM



BEFORE



AFTER

HS GYM



BEFORE



AFTER

HS SOFTBALL DUGOUTS



BEFORE



AFTER

HS SANITATION LINES



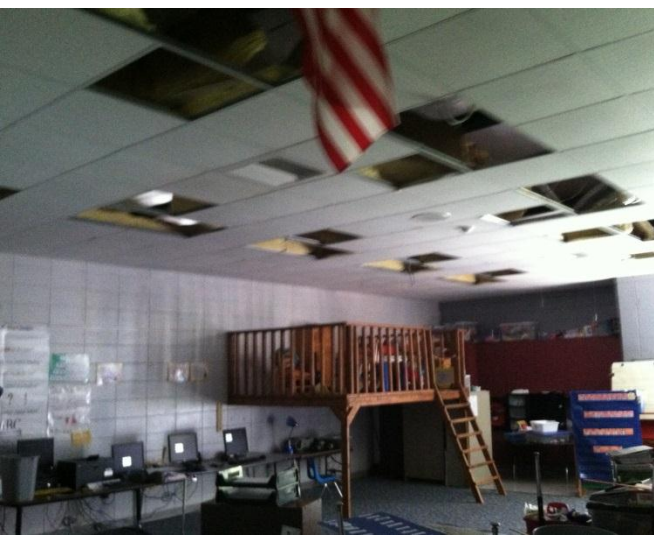
TRACK



MS GYM-WEIGHTROOM



BES & PCMS HVAC & LIGHTING



PES RENOVATION



PES RENOVATION



BEFORE



AFTER

PES RENOVATION



BEFORE



AFTER

PES RENOVATION



BEFORE



AFTER

PES RENOVATION



BEFORE



AFTER

Condition of District Facilities

Patterson Elementary School

- Renovated 2015
- Condition of Building – Good

Blackshear Elementary School

- Updated 2013-2014
- Condition of Building – Good

Midway Elementary School

- Eight Years Old
- Condition of Building – Good

Pierce County Middle School

- Updated 2014
- Condition of Building – Good



Condition of District Facilities

Pierce County High School

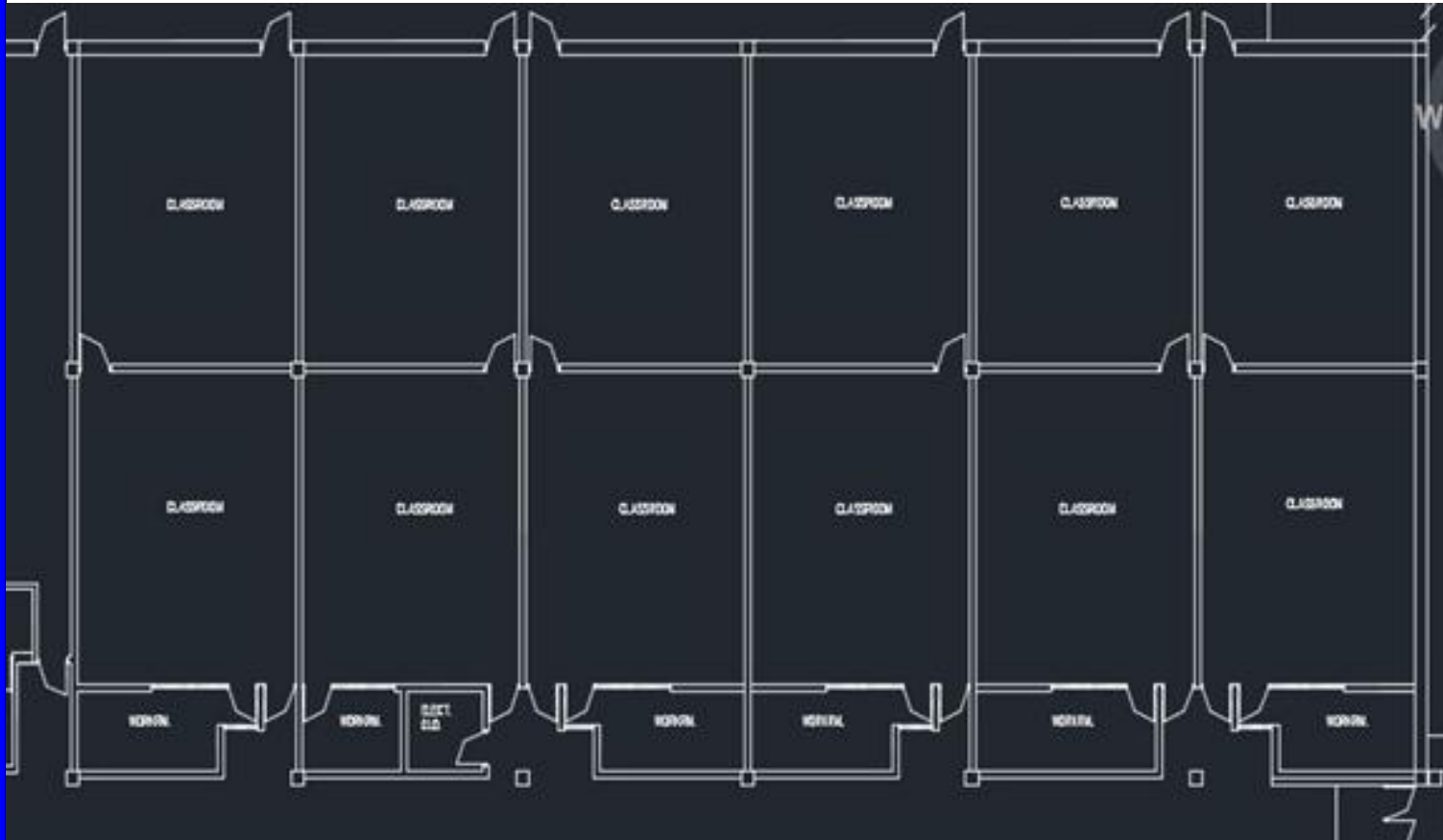
- Nearly 40 years old
- Condition of Building – Needs Major Work Due to Age
- Mechanical Systems Need Replacement
- Electrical & Data Systems Need Replacement
- Internal Water & Sewer Systems Need Replacement
- Flooring Needs Replacement
- Lighting Needs Replacement
- Interior of School Needs More Capacity and Renovation
- Exterior of School Needs Improvements
- Very limited state funding for above needs due to age
- Design of school creates many challenges for instruction and administration

















PCHS Options: New or Renovate



- **Logistics of Construction**
- **Continued Quality of the Education Process**
- **21st Century Design and Flexibility**
- **Security and Life Safety**
- **Energy / Operational Costs**
- **Net Cost to Local Taxpayer**
- **~\$18M local funds: new or renovated**

New vs. Renovated PCHS

- Available State Funds for Construction of New PCHS: \$14,782,643
- Available State Funds for Renovation and Modification of PCHS: \$1,578,252 (for HVAC)
- State Projected Minimum Needs
 - 33 9-12 Classrooms
 - 16 Art / Music / CTAE Classrooms
 - 8 Science Classrooms
 - 1 Media Center
 - 1 Physical Education Facility
 - 59 Total Instructional Units



State Funding Caveats

- According to Len McCoy, our GaDOE facilities consultant, now is the best time to apply for funds to build a new high school:
 - In order to get full advanced funding (all the money possible) from GaDOE, we must make application by July 2016.
 - Each year of delay may reduce the advanced funding by \$1.3 million.



PCHS Options: Financing a New PCHS



- **No Tax Increase to Finance New High School!**
- **Would need to sell bonds like when we built Blackshear Elementary and Pierce County Middle**
- **Similar to an individual taking out a mortgage to build a home**
- **Would use SPLOST to pay off “mortgage” as we have in the past (BES & PCMS)**
- **Estimated length of new PCHS “mortgage”: 20-25 years until paid off**



**Please exercise
your right to vote
on May 24.**

Questions

