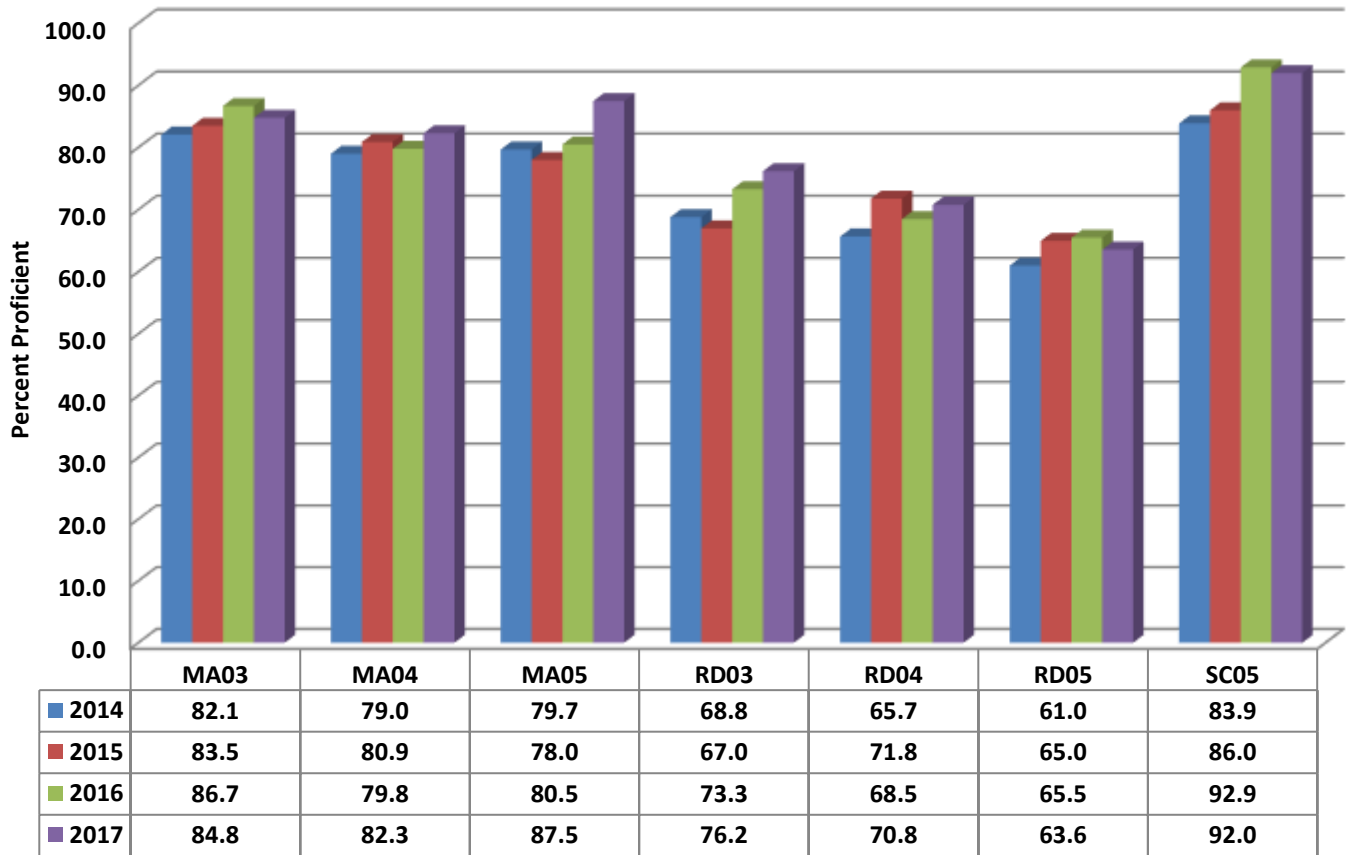


Hopewell Elementary Four Year Comparison Using GLP



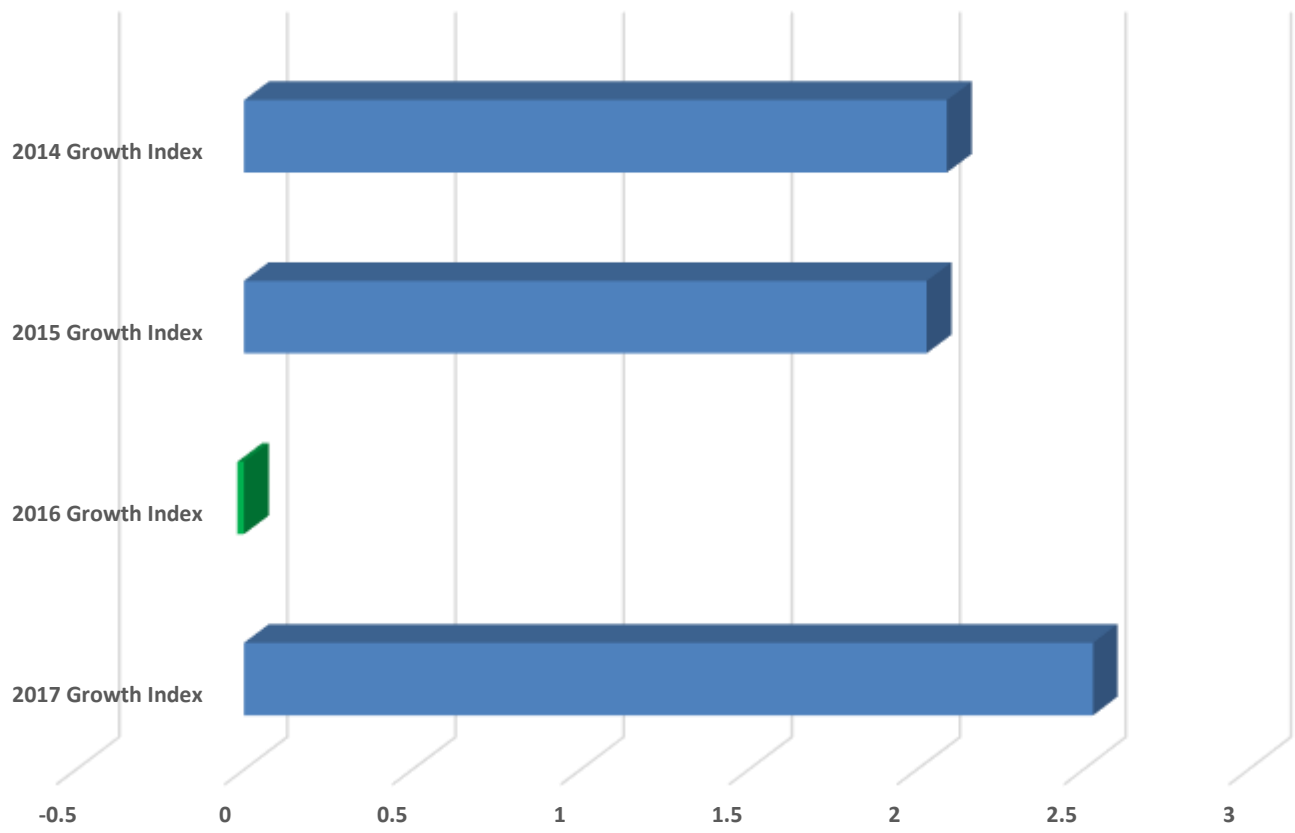
READY Accountability Model

	CCR Denominator	CCR Percent	GLP Denominator	GLP Percent
2014	788	66.4	788	74.4
2015	702	67.0	702	76.1
2016	757	70.8	757	78.5
2017	700	68.6	700	79.4

State and Federal AMO Targets

	EVASS Status	Total Targets	Targets Met	Target Percent
2014	Exceeded Expected Growth	23	22	95.7
2015	Exceeded Expected Growth	25	24	96.0
2016	Met Expected Growth	13	13	100.0
2017	Exceeded Expected Growth	15	15	100.0

Hopewell Elementary Growth Index



	2017 Growth Index	2016 Growth Index	2015 Growth Index	2014 Growth Index
Hopewell	2.53	-0.02	2.03	2.09

Growth Index

	School Accountability Type	Index	Level
2014	Math, Reading, and Science	2.09	Exceeded Expected Growth
2015	Math, Reading, and Science	2.03	Exceeded Expected Growth
2016	Math, Reading, and Science	-0.02	Met Expected Growth
2017	Math, Reading, and Science	2.53	Exceeded Expected Growth