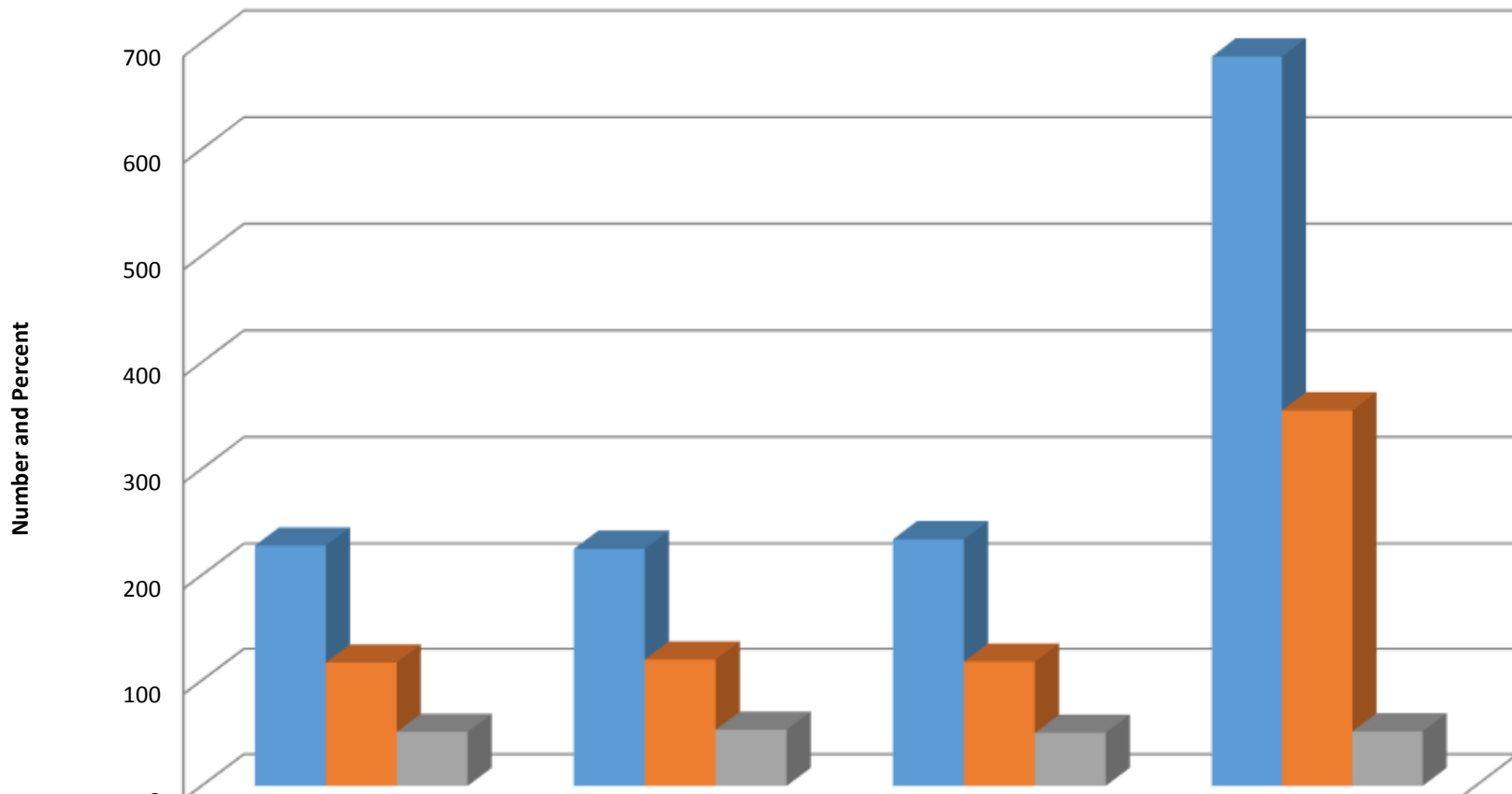
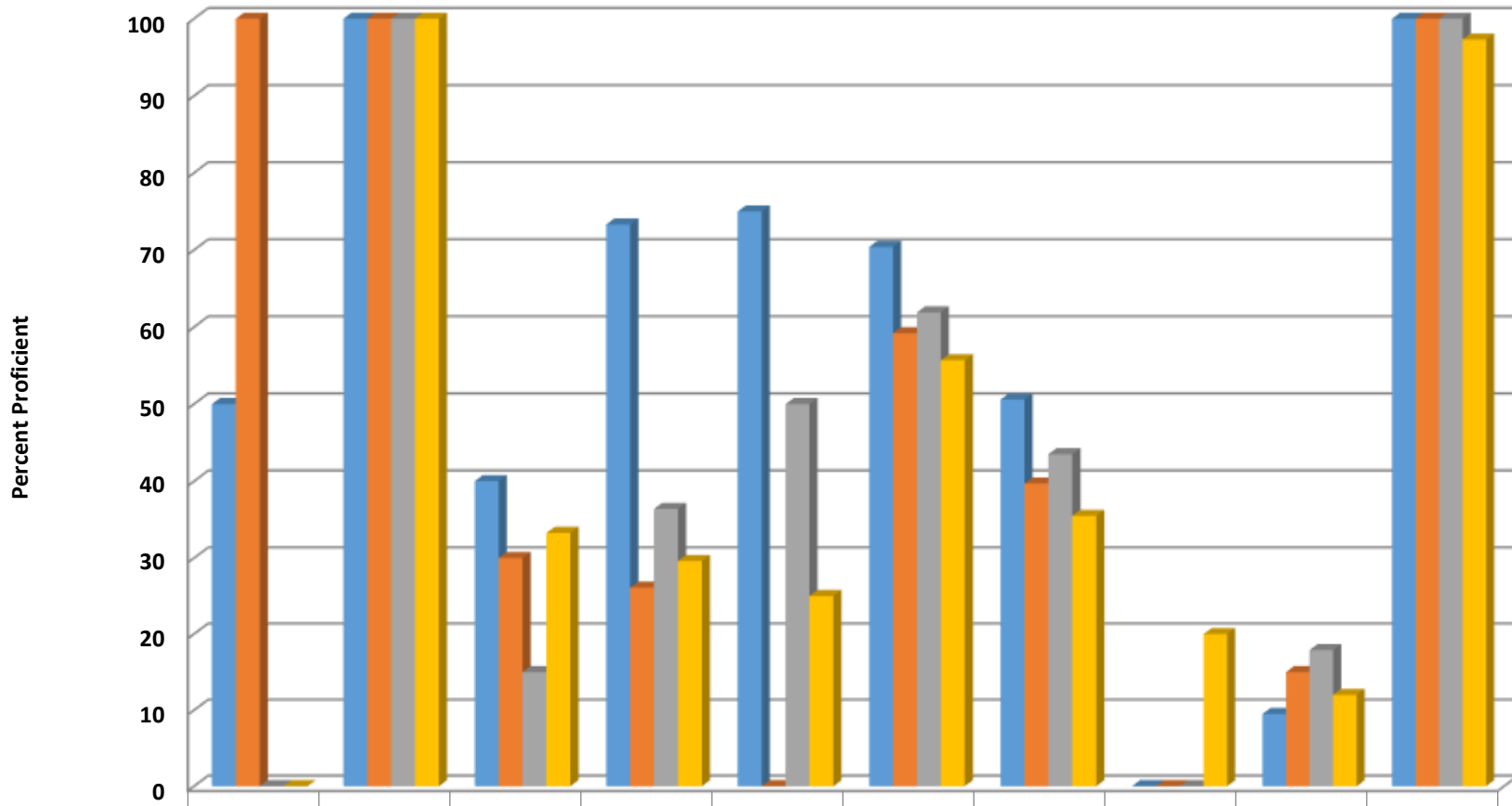


## Providence Grove High 2016-2017 All EOC's GLP



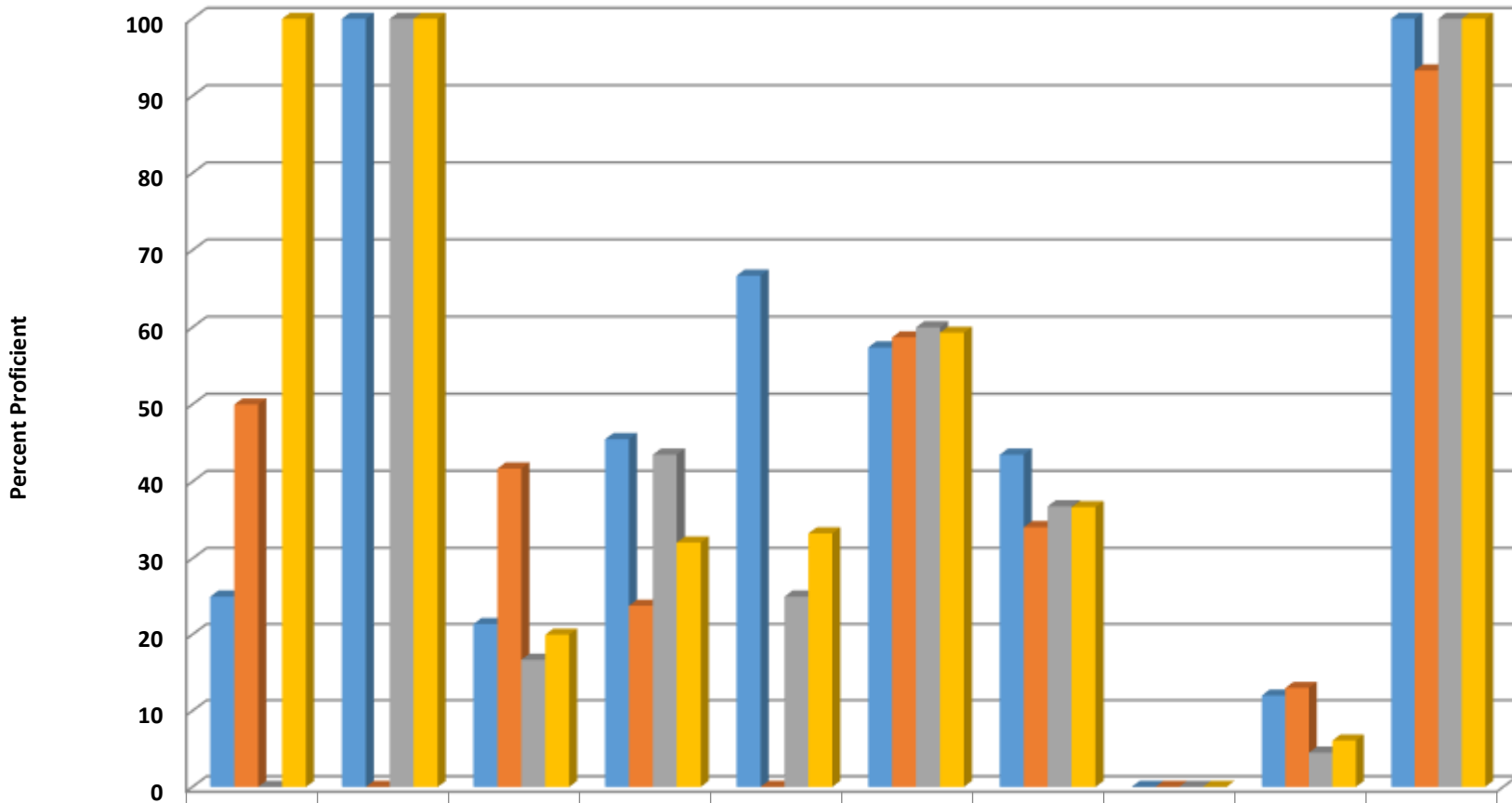
	Bio	E2	M1	EOC
denomiantor	228	225	234	687
numerator	117	120	118	355
percent	51.3	53.3	50.4	51.7

## Providence Grove High Biology Percent Proficient by Subgroups



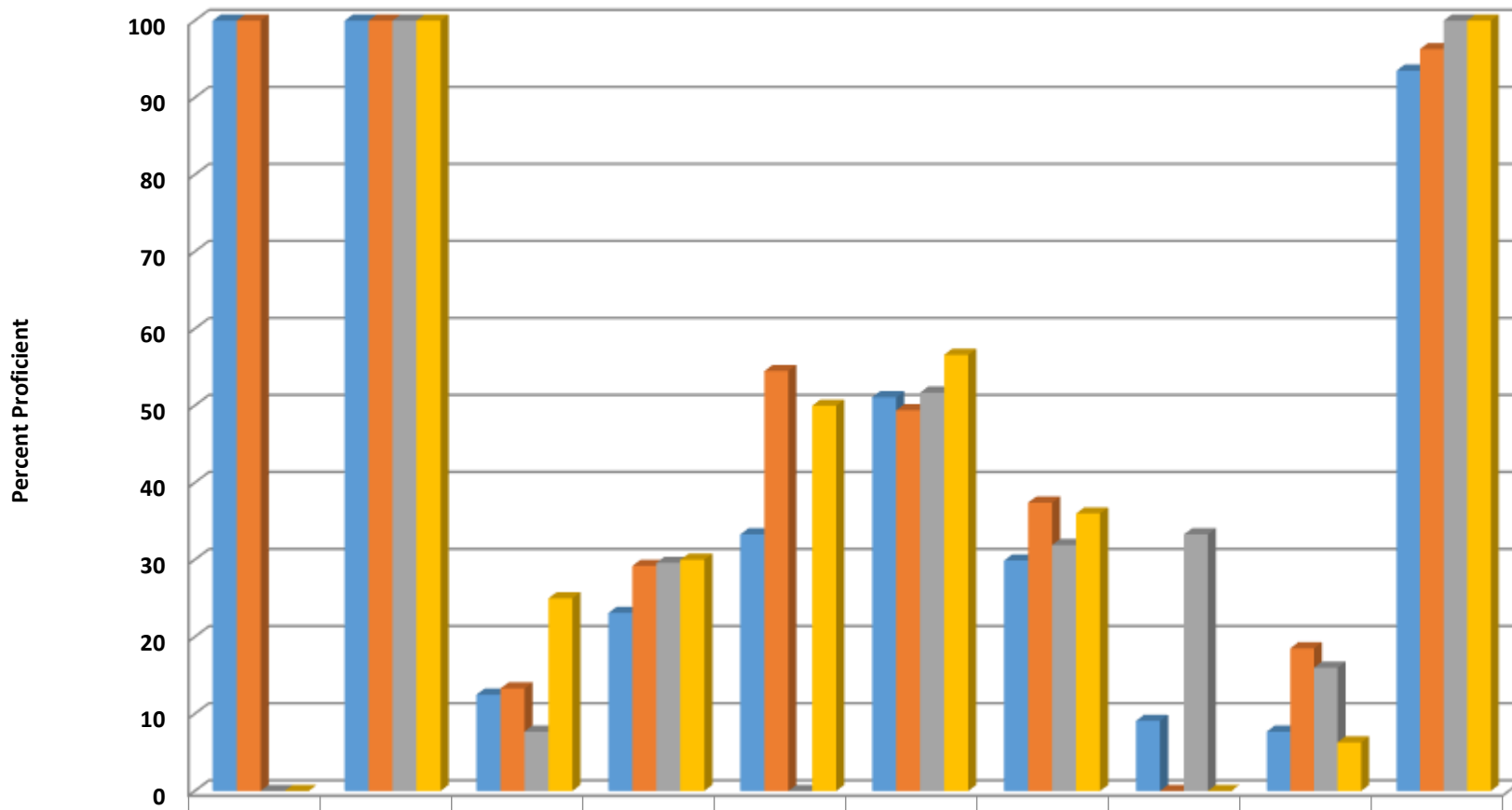
	AMIN	ASIA	BLCK	HISP	MULT	WHT	EDS	LEP	SWD	AIG
■ 2014 prof pct	50	100	40	73.3	75	70.4	50.6	0	9.5	100
■ 2015 prof pct	100	100	30	26.1	0	59.2	39.7	0	15	100
■ 2016 prof pct	0	100	15	36.4	50	61.9	43.5	0	17.9	100
■ 2017 prof pct	0	100	33.3	29.6	25	55.7	35.5	20	12	97.3

## Providence Grove High English II Percent Proficient by Subgroups



	AMIN	ASIA	BLCK	HISP	MULT	WHITE	EDS	LEP	SWD	AIG
2014 prof pct	25	100	21.4	45.5	66.7	57.4	43.5	0	12	100
2015 prof pct	50	0	41.7	23.8	0	58.7	34.1	0	13	93.3
2016 prof pct	0	100	16.7	43.5	25	60	36.8	0	4.5	100
2017 prof pct	100	100	20	32.1	33.3	59.3	36.7	0	6.1	100

## Providence Grove High NC Math I Percent Proficient by Subgroups



	AMIN	ASIA	BLCK	HISP	MULT	WHTE	EDS	LEP	SWD	AIG
2014 prof pct	100	100	12.5	23.1	33.3	51.1	29.9	9.1	7.7	93.5
2015 prof pct	100	100	13.3	29.2	54.5	49.4	37.4	0	18.5	96.3
2016 prof pct	0	100	7.7	29.6	0	51.7	31.9	33.3	16	100
2017 prof pct	0	100	25	30	50	56.6	36	0	6.3	100

## Four Year Graduation Subgroup Data

PGHS	2016-2017			2015-2016			2014-2015			2013-2014		
Subgroup	Denominator	Numerator	Percent	Denominator	Numerator	Percent	Denominator	Numerator	Percent	Denominator	Numerator	Percent
All Students	210	191	91	216	190	88	189	164	86.8	208	176	84.6
Male	103	92	89.3	119	102	85.7	93	76	81.7	106	81	76.4
Female	107	99	92.5	97	88	90.7	96	88	91.7	102	95	93.1
American Indian	*	*	*	*	*	*	*	*	*	*	*	*
Asian	*	*	*	*	*	*	*	*	*	*	*	*
Black	11	-	>95	12	10	83.3	*	*	*	8	6	75
Hispanic	22	20	90.9	24	20	83.3	13	10	76.9	23	21	91.3
Two or More Races	*	*	*	6	-	>95	5	-	>95	*	*	*
White	171	154	90.1	170	150	88.2	165	145	87.9	174	147	84.5
Economically Disadvantaged	82	73	89	80	64	80	60	43	71.7	95	71	74.7
Limited English Proficient	*	*	*	*	*	*	*	*	*	*	*	*
Students With Disabilities	20	15	75	20	16	80	19	12	63.2	22	15	68.2
Academically Gifted	31	-	>95	23	-	>95	31	-	>95	27	-	>95