



2014-2015 Performance and Growth Results

September 2015

Dr. Stephen Gainey
Superintendent

Three Components of READY Accountability

1. Growth Indicators – The amount of growth exhibited by students at each school over the past year compared to the average growth for all schools in North Carolina as calculated by Education Value Added Assessment System (EVAAS). Reported as:
 - Exceeded Expected Growth
 - Met Expected Growth
 - Did Not Meet Expected Growth
2. Performance Indicators – Percentage of proficient scores at Grade Level Proficiency (GLP) Levels 3, 4, and 5, and College and Career Ready Proficient on end-of-grade and end-of-course assessments Levels 4 and 5. Performance Indicators also include other high school measures – The ACT, ACT WorkKeys, Math Course Rigor, and Graduation Rate.
3. Progress Indicators – Percentage of scores meeting targets for federal and state AMOs in Reading, Math, Science, and the Other High School measures mentioned under Growth Indicators. Targets are set by the State for each subgroup and change on a yearly basis per subgroup.

Good News for RCSS

- None of our schools exceeded the State achievement gap of 54.4% in any subject area. Performance targets are set by the State with the goal of closing performance gaps among groups of students over time.
- The Randolph County School System (RCSS) had no low participating schools, compared to 118 consistently low participating schools in North Carolina. Schools are labeled low participating schools by not meeting participation rate requirements for two consecutive years.
- Likewise, no RCSS schools were labeled as Focus schools for missing participation targets. The State had 111 Focus schools not meeting participation requirements for three consecutive years. Please note participation is required by Annual Measurable Objective (AMO) targets. The State holds schools to 95% participation rate and applies consequences to schools that do not meet the targets by subgroup.
- All of our schools met their participation targets in Reading, Math, Science, WorkKeys, and The ACT for the first time in three years.
- Elementary schools improved their reading growth index by a combined 10.45%.

Good News for RCSS Schools

- Twenty-one of RCSS schools (67.7%) either met or exceeded growth expectations.
- Trindale Elementary and Randolph Early College High met all Federal AMO targets and State targets.
- More RCSS students graduated from high school in four years (89.6%) than the State (85.4%).
- None of RCSS high schools exceeded the State achievement gap of 38.4% in any subgroup for their graduation rate.

Good News for RCSS

- Nine of our 17 elementary schools increased their College and Career Readiness proficiency over the previous year.
- Two out of our seven middle schools increased their College and Career Readiness proficiency over the previous year.
- Five of our seven high schools increased their College and Career Readiness proficiency over the previous year.
- Out of 115 School Districts in the State, RCSS ranked 68th in both GLP and CCR.

Good News for RCSS Schools

- RCSS met more AMO targets than the State in the following subjects:
 - Reading and Math at grades 3-8,
 - Reading and Math at grade 10,
 - Science at grade 11,
 - The ACT,
 - ACT WorkKeys, and
 - Math Course Rigor.

Good News for RCSS Schools

- RCSS ranked sixth among eleven area School Districts on percent of students College and Career Ready (CCR).
- RCSS ranked sixth among eleven area School Districts on percent of students Grade Level Proficient (GLP).
- RCSS ranked first among area School Districts on percent of students graduating from high school in four years.

RCSS Compared to The State By Ready State and Federal Indicators

RCSS AMOSTAT - Target Overview			
Subject	#Met	#Targ	Pct
Reading Grades 3-8	12	22	54.5
Math Grades 3-8	12	22	54.5
Science Grades 5&8	12	20	60.0
Reading Grade 10	8	15	53.3
Math Grade 10	9	15	60.0
Science Grade 11	11	17	64.7
Current Year EOC	10	10	100.0
Attendance	1	1	100.0
Cohort Grad Rate	6	7	85.7
The ACT	11	17	64.7
ACT WorkKeys	11	12	91.7
Math Course Rigor	7	7	100.0
Total Targets	110	165	66.7

State AMOSTAT - Target Overview			
Subject	#Met	#Targ	Pct
Reading Grades 3-8	11	22	50.0
Math Grades 3-8	11	22	50.0
Science Grades 5&8	14	22	63.6
Reading Grade 10	11	22	50.0
Math Grade 10	11	22	50.0
Science Grade 11	10	22	45.5
Current Year EOC	11	11	100.0
Attendance	1	1	100.0
Cohort Grad Rate	10	11	90.9
The ACT	10	22	45.5
ACT WorkKeys	9	22	40.9
Math Course Rigor	6	11	54.5
Total Targets	115	210	54.8

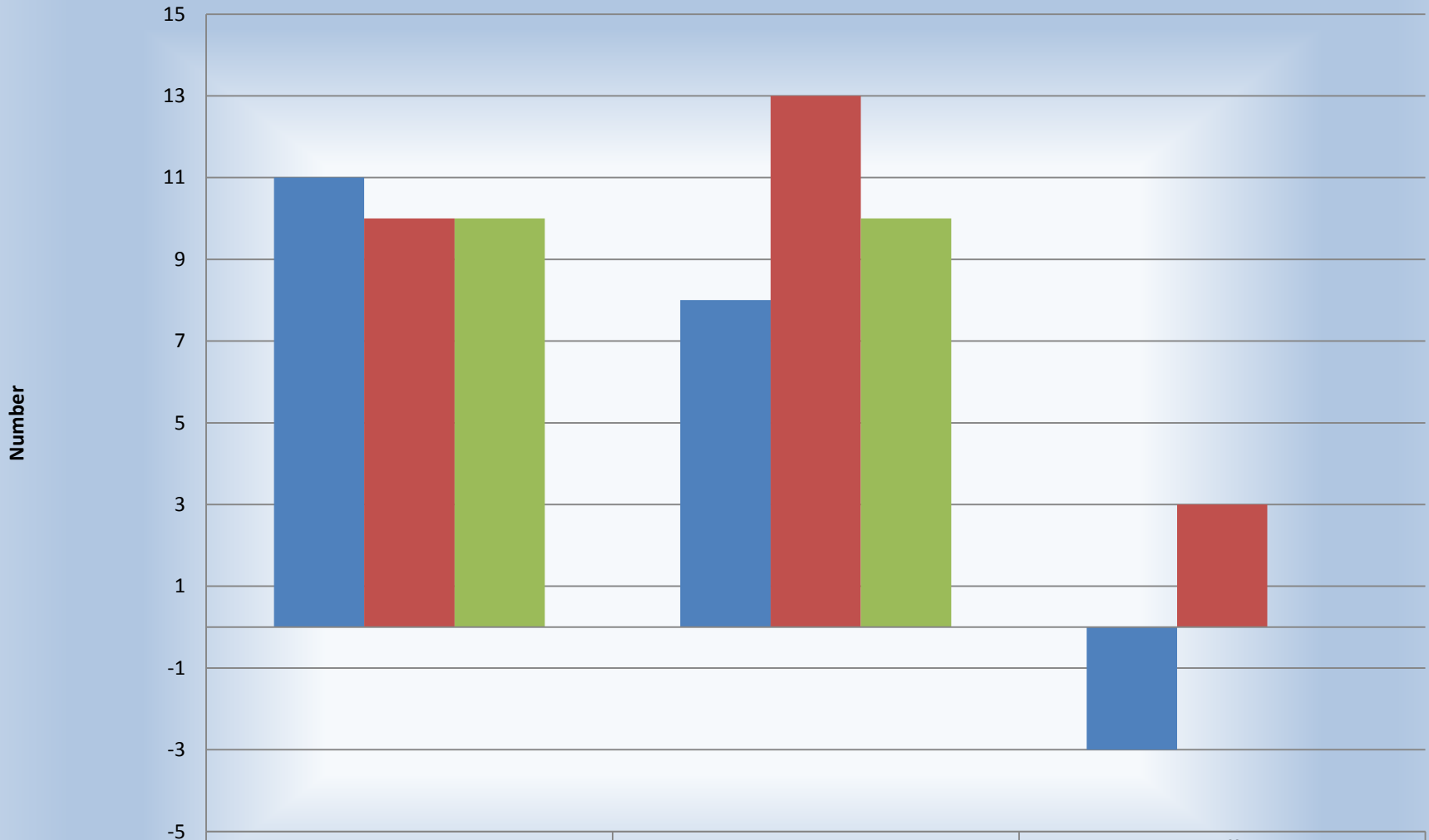
2014-2015 Percent of State and Federal Targets Met

Subject	Percent RCSS Meeting Targets	Percent State Meeting Targets	Difference between RCSS and State
Reading 3-8	54.5	50	4.5
Math 3-8	54.5	50	4.5
Science 5&8	60	63.6	-3.6
Reading 10	53.3	50	3.3
Math 10	60	50	10
Science 11	64.7	45.5	19.2
Current Year EOC	100	100	0
Attendance	100	100	0
The ACT	64.7	45.5	19.2
ACT WorkKeys	91.7	40.9	50.8
Math Course Rigor	100	54.5	45.5
Total Targets	110	115	-5

2014-2015 Reading Growth Index for Elementary Schools

	Growth Index Data	
Elementary	Sum of math end-of-grade index	Sum of read end-of-grade index
Archdale Elementary	0.11	2.06
Coleridge Elementary	2.79	2.75
Farmer Elementary	0.2	0.72
Franklinville Elementary	-2.38	-0.5
Grays Chapel Elementary	-2.74	-1.18
Hopewell Elementary	-1.25	1.81
John R Lawrence Elementary	0.53	0.45
Level Cross Elementary	-3.81	-0.53
Liberty Elementary	1.27	0.83
New Market Elementary	-0.92	0.57
Ramseur Elementary	-1.34	0.63
Randleman Elementary	2.81	0.16
Seagrove Elementary	2.68	-1.02
Southmont Elementary	-2.4	-0.09
Tabernacle Elementary	1.93	1.46
Trindale Elementary	-2.43	1.11
Trinity Elementary	1.89	1.22
Grand Total	-3.06	10.45

RCSS 2014-2015 School Accountability Growth Comparisons



■ Exceeded Growth
 ■ Expected Growth
 ■ Did Not Meet

2013-2015 Growth by Elementary School

School	Growth		
	2013	2014	2015
Archdale	Met	Met	Exceeds
Coleridge	Exceeds	Exceeds	Exceeds
Farmer	Met	Met	Met
Franklinville	Met	Exceeds	Met
Grays Chapel	Met	Met	Not Met
Hopewell	Exceeds	Exceeds	Exceeds
Lawrence	Not Met	Not Met	Met
Level Cross	Met	Met	Not Met
Liberty	Met	Met	Met
New Market	Met	Exceeds	Met
Ramseur	Exceeds	Exceeds	Met
RES	Met	Not Met	Met
Seagrove	Exceeds	Not Met	Met
Southmont	Met	Not Met	Not Met
Tabernacle	Met	Met	Exceeds
Trindale	Exceeds	Exceeds	Met
TES	Met	Exceeds	Exceeds

2013-2015 Growth by Middle and High Schools

School	Growth		
	2013	2014	2015
ATMS	Not Met	Not Met	Not Met
BC	Met	Met	Met
NERMS	Not Met	Met	Met
RMS	Met	Met	Not Met
SERMS	Met	Not Met	Not Met
SWRMS	Met	Not Met	Not Met
UMS	Met	Not Met	Not Met

School	Growth		
	2013	2014	2015
ERHS	Met	Not Met	Not Met
PGHS	Met	Exceeds	Met
RHS	Met	Not Met	Not Met
RECHS	Exceeds	Exceeds	Exceeds
SWRHS	Exceeds	Exceeds	Exceeds
THS	Exceeds	Exceeds	Exceeds
WHS	Met	Met	Met

2014-2015 Percent College and Career Ready (CCR)

District Name	Subject	Percent Level 1	Percent Level 2	Percent Level 3	Percent Level 4	Percent Level 5	Percent College and Career Ready (CCR)
Moore County Schools	All EOG/EOC Subjects	19.7	20.3	9.8	35.6	14.6	50.2
Davidson County Schools	All EOG/EOC Subjects	18.3	21.8	10.4	37	12.6	49.5
Chatham County Schools	All EOG/EOC Subjects	23	20	9.4	33.6	14	47.6
State of NC	All EOG/EOC Subjects	22.5	20.9	9.7	33.6	13.3	46.9
Guilford County Schools	All EOG/EOC Subjects	25.5	21.3	9.2	31.5	12.5	44
Randolph County Schools	All EOG/EOC Subjects	25.3	22.2	9.9	32.8	9.8	42.5
Alamance-Burlington Schools	All EOG/EOC Subjects	26.7	23.4	9.8	30.3	9.8	40.2
Asheboro City Schools	All EOG/EOC Subjects	26.2	21.2	12.4	31.1	9.1	40.1
Charter Schools	All EOG/EOC Subjects	29.6	21.1	12.2	35	<5	37.1
Montgomery County Schools	All EOG/EOC Subjects	28.6	24.7	10.1	29.6	7.1	36.7
Lexington City Schools	All EOG/EOC Subjects	30.5	22.3	11.4	28.1	7.7	35.8
Thomasville City Schools	All EOG/EOC Subjects	35.1	21.2	11.6	26.8	5.3	32.1

2014-2015 Percent Grade Level Proficient (GLP)

District Name	Subject	Percent Level 1	Percent Level 2	Percent Level 3	Percent Level 4	Percent Level 5	Percent Grade Level Proficient (GLP)
Moore County Schools	All EOG/EOC Subjects	19.7	20.3	9.8	35.6	14.6	60
Davidson County Schools	All EOG/EOC Subjects	18.3	21.8	10.4	37	12.6	59.9
Chatham County Schools	All EOG/EOC Subjects	23	20	9.4	33.6	14	57
State of North Carolina	All EOG/EOC Subjects	22.5	20.9	9.7	33.6	13.3	56.6
Guilford County Schools	All EOG/EOC Subjects	25.5	21.3	9.2	31.5	12.5	53.2
Randolph County Schools	All EOG/EOC Subjects	25.3	22.2	9.9	32.8	9.8	52.5
Asheboro City Schools	All EOG/EOC Subjects	26.2	21.2	12.4	31.1	9.1	52.5
Alamance-Burlington Schools	All EOG/EOC Subjects	26.7	23.4	9.8	30.3	9.8	49.9
Charter Schools	All EOG/EOC Subjects	29.6	21.1	12.2	35	<5	49.3
Lexington City Schools	All EOG/EOC Subjects	30.5	22.3	11.4	28.1	7.7	47.2
Montgomery County Schools	All EOG/EOC Subjects	28.6	24.7	10.1	29.6	7.1	46.8
Thomasville City Schools	All EOG/EOC Subjects	35.1	21.2	11.6	26.8	5.3	43.7

2014-2015 4-Year Graduation Rate Comparisons

District Name	4-Year Cohort Graduation Rate Percent
Randolph County Schools	89.6
Guilford County Schools	89.3
Chatham County Schools	87.3
Moore County Schools	87.3
Asheboro City Schools	86.8
State of North Carolina	85.4
Thomasville City Schools	85.1
Davidson County Schools	82.2
Alamance-Burlington Schools	82
Lexington City Schools	80.9

RCSS GLP Summary

- Eleven of RCSS elementary schools had gains in proficiency during the 2014-2015 school year in comparison to the 2013-2014 school year.
- NERMS had progress in making gains during the 2014-2015 school year in comparison to the 2013-2014 school year.
- Five high schools had positive proficiency gains.

2014-2015

GLP Comparisons for Elementary Schools

School	READY Accountability Performance Composite			Diff
	2013	2014	2015	
Archdale	45.30%	53.80%	56.10%	2.30%
Coleridge	39.50%	50.50%	54.90%	4.40%
Farmer	51.80%	60.30%	54.10%	-6.20%
Franklinville	44.50%	60.70%	64.80%	4.10%
Grays Chapel	41.90%	63.30%	57.70%	-5.60%
Hopewell	64.40%	74.40%	76.10%	1.70%
Lawrence	49.00%	56.20%	57.60%	1.40%
Level Cross	48.50%	59.40%	53.80%	-5.60%
Liberty	38.10%	49.10%	51.60%	2.50%
New Market	47.20%	66.10%	66.00%	-0.10%
Ramseur	28.70%	42.60%	45.40%	2.80%
RES	39.40%	48.50%	49.60%	1.10%
Seagrove	50.10%	59.70%	60.00%	0.30%
Southmont	44.30%	54.00%	52.00%	-2.00%
Tabernacle	41.90%	52.50%	56.20%	3.70%
Trindale	53.20%	76.00%	75.30%	-0.70%
TES	38.40%	56.80%	58.10%	1.30%

2014-2015 GLP Comparisons for Middle Schools

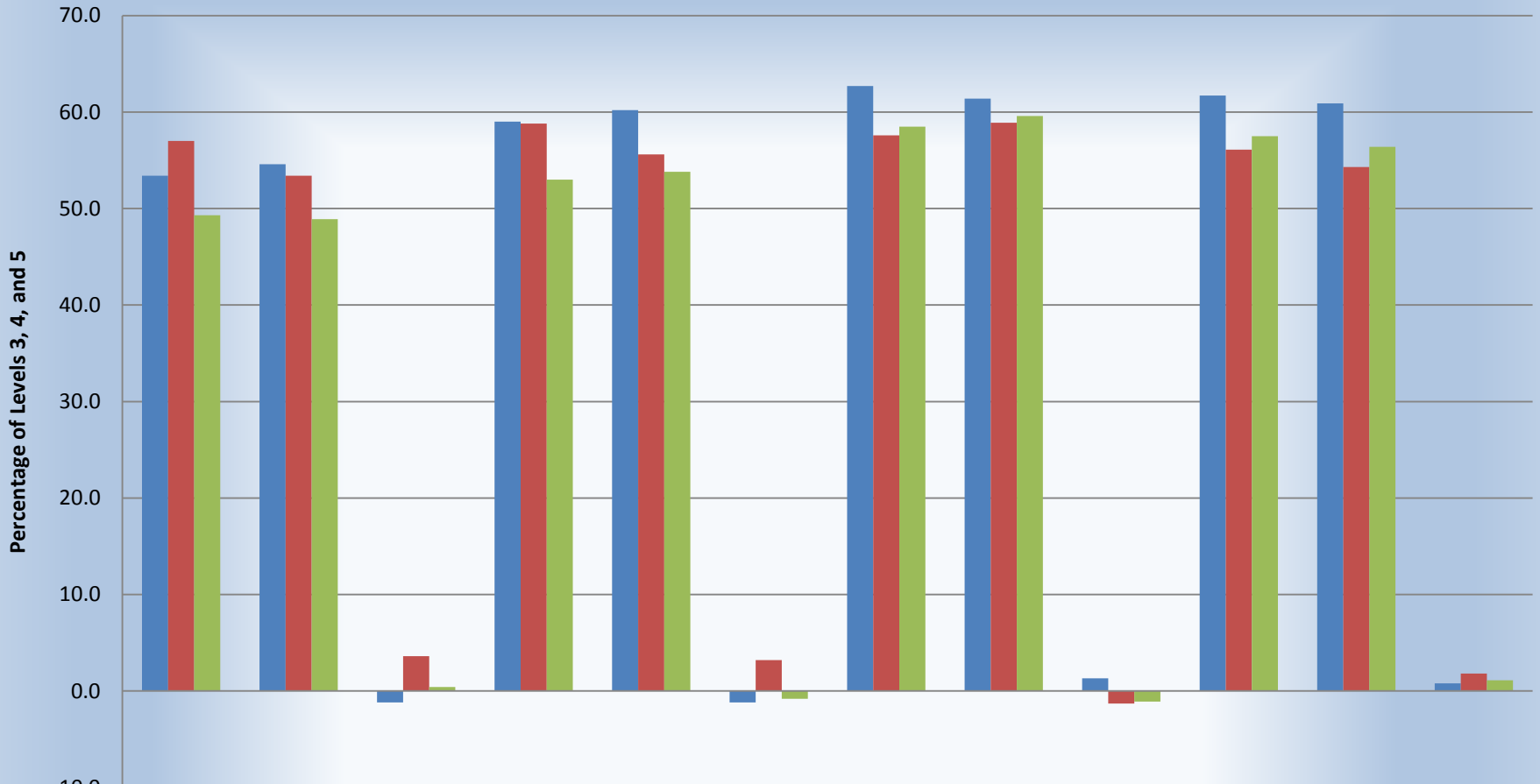
School	READY Accountability Performance Composite			Diff
	2013	2014	2015	
ATMS	44.10%	56.00%	53.90%	-2.10%
Braxton Craven	47.30%	57.10%	56.30%	-0.80%
NERMS	40.70%	52.30%	52.50%	0.20%
RMS	36.40%	48.00%	45.40%	-2.60%
SERMS	30.00%	35.50%	35.00%	-0.50%
SWRMS	38.50%	51.70%	47.50%	-4.20%
UMS	41.00%	50.60%	49.30%	-1.30%

RCSS Elementary and Middle Schools

GLP Summary

- Grades 3-8 Reading comparisons with the State, RCSS Elementary and Middle School students had gains in grades 4 and 5 in 2014-2015. Narrowing the proficiency gap with the State.
- In Math, RCSS students compared to the State had gains in grades 3, 6, 7, and 8. RCSS middle school students made progress improving their proficiency over the previous year.
- In Science at grade 5, RCSS students performed above the State by .5% and below the State at grade 8 by 5.2%. However, RCSS Science students had double digit gains over the previous year.

2014-2015 RCSS Grade 3-5 Reading and Math Grade Level Proficiency Comparisons with State

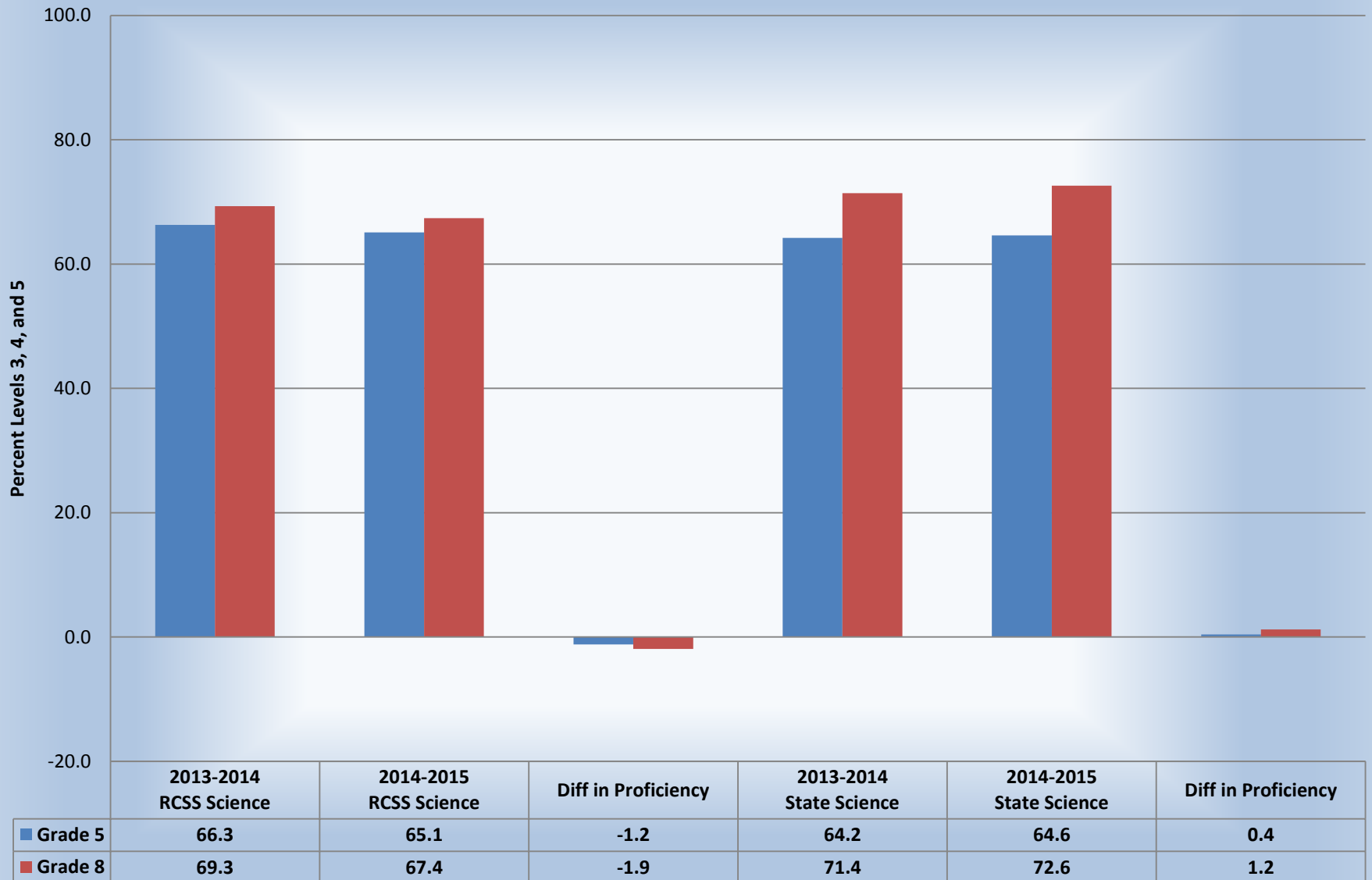


	2014-2015 RCSS Reading	2013-2014 RCSS Reading	Diff in Proficiency	2014-2015 State Reading	2013-2014 State Reading	Diff in Proficiency	2014-2015 RCSS Math	2013-2014 RCSS Math	Diff in Proficiency	2014-2015 State Math	2013-2014 State Math	Diff in Proficiency
■ Grade 3	53.4	54.6	-1.2	59.0	60.2	-1.2	62.7	61.4	1.3	61.7	60.9	0.8
■ Grade 4	57.0	53.4	3.6	58.8	55.6	3.2	57.6	58.9	-1.3	56.1	54.3	1.8
■ Grade 5	49.3	48.9	0.4	53.0	53.8	-0.8	58.5	59.6	-1.1	57.5	56.4	1.1

2014-2015 RCSS Grade 6-8 Reading and Math Grade Level Proficiency Comparisons with State



2014-2015 RCSS Grade 5 & 8 Science Grade Level Proficiency Comparisons with State



End-of-Course Comparisons with the State

- In High School, tests are required in Math I, Biology, and English II.
- RCSS students had gains in Biology, and English II from the previous year.
- Although RCSS made improvements in two End-of-Course tests, our students remain behind the State.
- It is important to note that the State scored slightly lower on all three end-of-course tests.

2013-2015 GLP Comparisons For High Schools

School	READY Accountability Performance Composite			Diff
	2013	2014	2015	
ERHS	24.70%	33.00%	36.40%	3.40%
PGHS	40.20%	56.00%	50.20%	-5.80%
RHS	38.10%	43.80%	43.80%	0.00%
RECHS	64.60%	78.90%	81.90%	3.00%
SWRHS	43.90%	52.90%	55.30%	2.40%
THS	47.50%	58.20%	58.80%	0.60%
WHS	39.20%	56.30%	55.90%	-0.40%

2014-2015 RCSS End-of-Course Grade Level Proficiency Comparisons with State

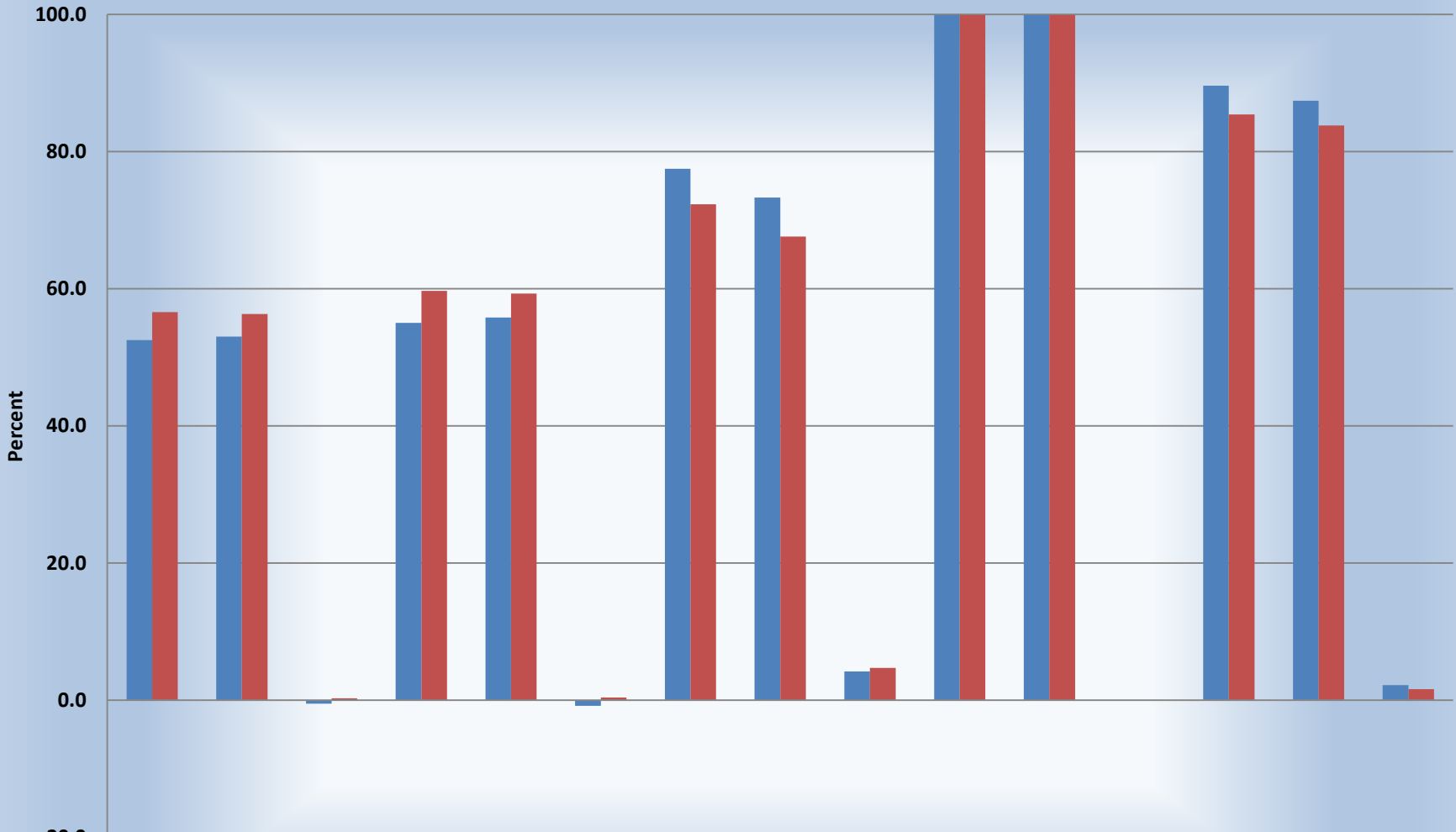


	2013-2014 RCSS	2014-2015 RCSS	Diff in Proficiency	2013-2014 State	2014-2015 State	Diff in Proficiency
Math I	60.4	56.9	-3.5	60.0	59.8	-0.2
Biology	51.1	53.5	2.4	53.9	53.7	-0.2
English II	51.4	52.9	1.5	61.2	59.6	-1.6

RCSS GLP Summary

- RCSS scored above the State in 2014-2015 on the following:
 - ACT WorkKeys by 5.2%,
 - 4 year Graduation Rate by 4.2%,
- RCSS scored below the State in 2014-2015 by:
 - -4.4% on College and Career Readiness; State 46.9% and RCSS 42.5%,
 - -4.1% on Grade Level Proficiency; State 56.6% and RCSS 52.5%, and
 - -4.7% on the ACT; State 59.7% and RCSS 55.0%.

2014-2015 Other Indicators Comparisons with State



	2014-2015 Performance Composite	2013-2014 Performance Composite	Diff	2014-2015 The ACT	2013-2014 The ACT	Diff	2014-2015 WorkKeys	2013-2014 WorkKeys	Diff	2014-2015 Math Course Rigor	2013-2014 Math Course Rigor	Diff	2014-2015 Graduation 4 Year Cohort	2013-2014 Graduation 4 Year Cohort	Diff
■ RCSS	52.5	53.0	-0.5	55	55.8	-0.8	77.5	73.3	4.2	99.9	99.9	0	89.6	87.4	2.2
■ State	56.6	56.3	0.3	59.7	59.3	0.4	72.3	67.6	4.7	99.9	99.9	0	85.4	83.8	1.6

RCSS COLLEGE and CAREER READINESS Comparisons By Elementary School

School Name	2014-2015 CCR Proficient	2013-2014 CCR Proficient	Diff of CCR
Tabernacle Elementary	47	40.5	6.5
John R Lawrence Elementary	50	43.8	6.2
Trinity Elementary	46.3	41.5	4.8
Franklinville Elementary	52.4	47.9	4.5
Liberty Elementary	40.1	37.2	2.9
Ramseur Elementary	34.5	31.7	2.8
Archdale Elementary	42.4	40.3	2.1
Seagrove Elementary	48.7	47.2	1.5
Hopewell Elementary	67	66.4	0.6
Coleridge Elementary	40.8	40.8	0
New Market Elementary	54.9	55.5	-0.6
Randleman Elementary	36.5	37.2	-0.7
Southmont Elementary	41.8	43.9	-2.1
Farmer Elementary	43.5	46.3	-2.8
Trindale Elementary	66.5	69.4	-2.9
Grays Chapel Elementary	47.6	52.2	-4.6
Level Cross Elementary	42.5	47.3	-4.8

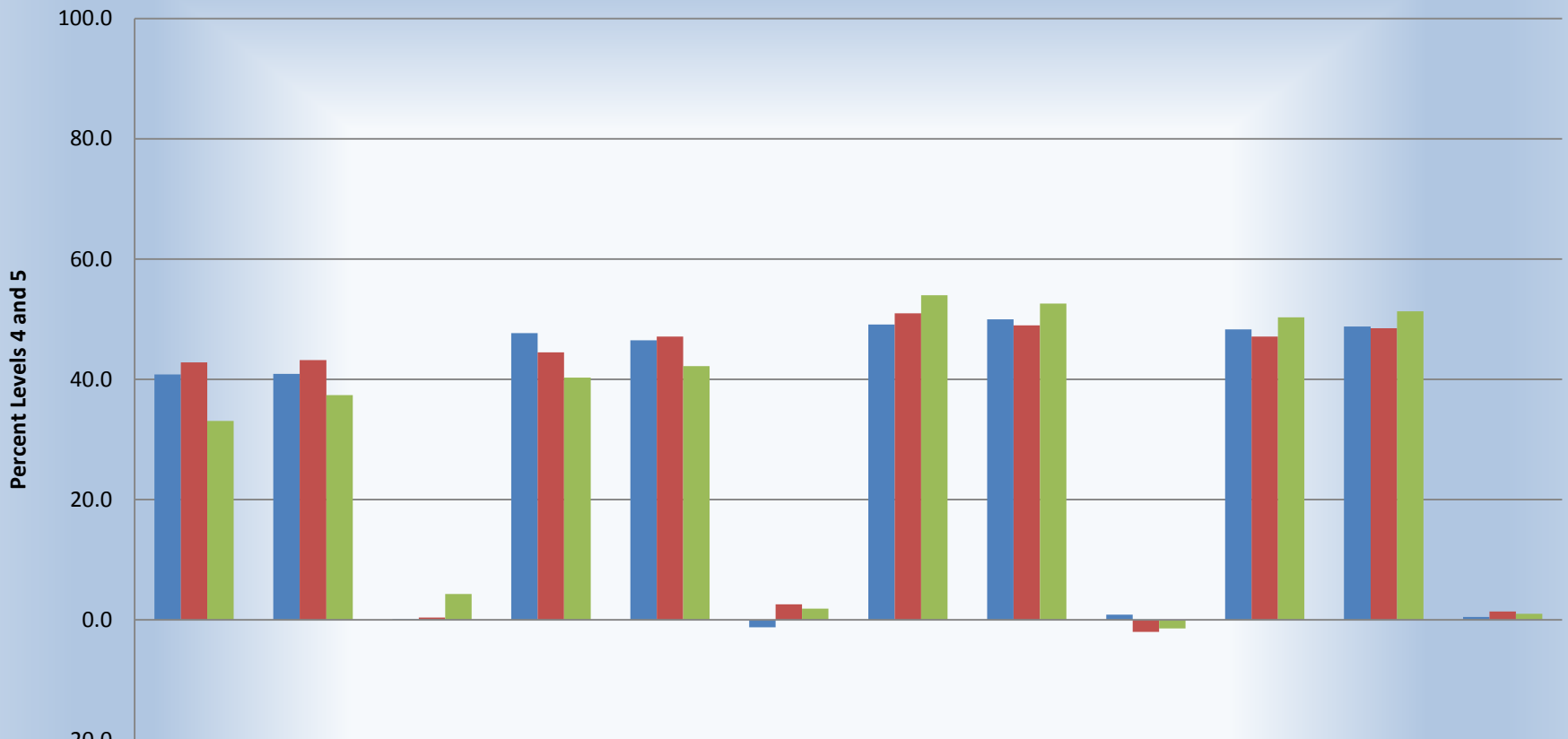
RCSS COLLEGE and CAREER READINESS Comparisons By Middle School

School Name	2014-2015 CCR Proficient	2013-2014 CCR Proficient	Diff of CCR
SERMS	27.8	25.2	2.6
NERMS	44.2	42.7	1.5
UMS	38.6	39	-0.4
RMS	37.4	37.9	-0.5
ATMS	44.8	45.9	-1.1
BC	45.4	46.9	-1.5
SWRMS	39.2	40.9	-1.7

RCSS COLLEGE and CAREER READINESS Comparisons By High School

School Name	2014-2015 CCR Proficient	2013-2014 CCR Proficient	Diff of CCR
RECHS	74.6	64.6	10
ERHS	26.7	23.7	3
THS	47.3	44.7	2.6
WHS	43.8	42.6	1.2
SWRHS	44.7	43.7	1
RHS	32.3	32.7	-0.4
PGHS	37.2	44.3	-7.1

2014-2015 RCSS End-of-Grade College and Career Readiness Comparisons with State



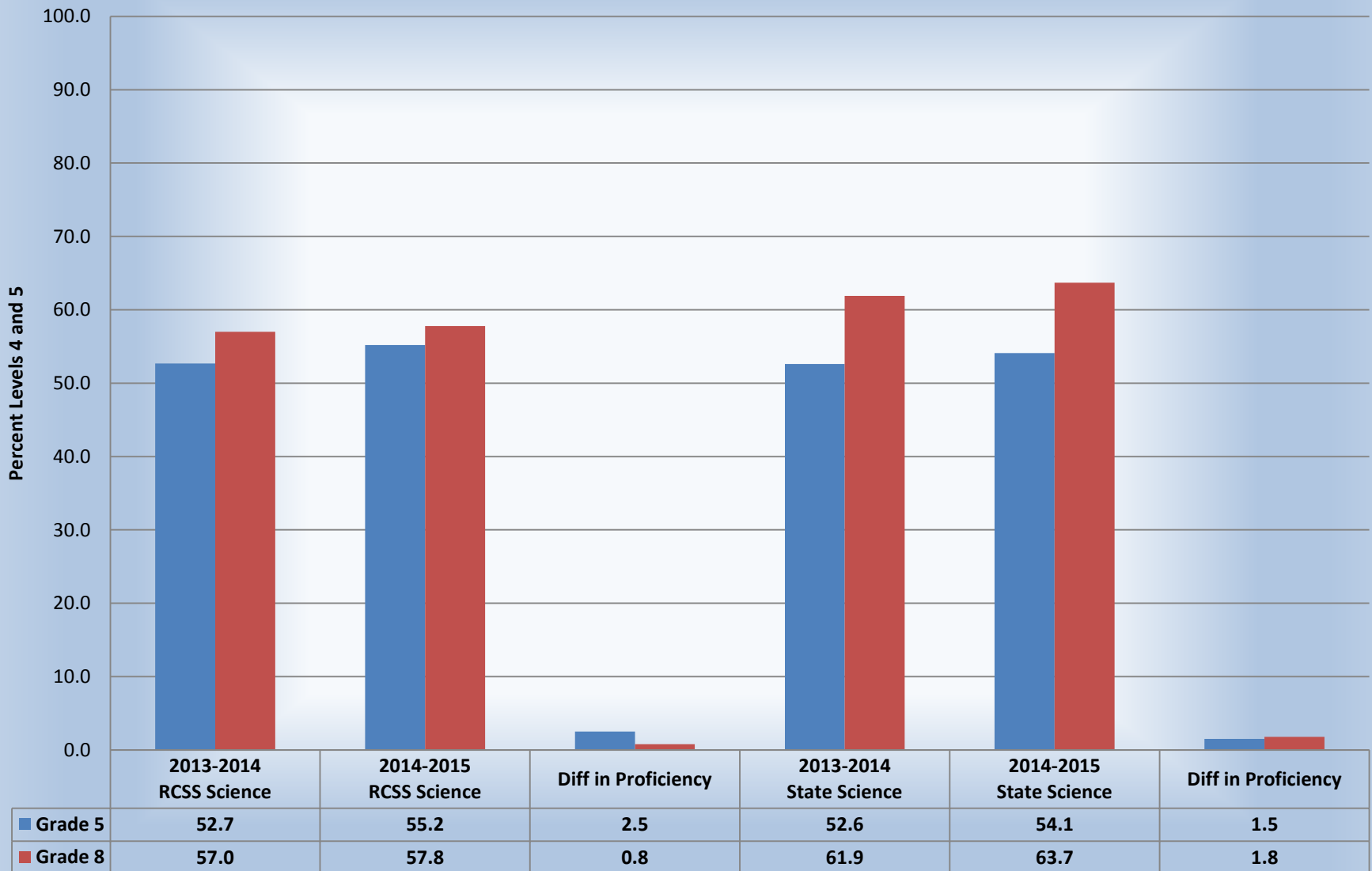
	2013-2014 RCSS CCR Reading	2014-2015 RCSS CCR Reading	Diff	2013-2014 State CCR Reading	2014-2015 State CCR Reading	Diff	2013-2014 RCSS CCR Math	2014-2015 RCSS CCR Math	DIFF	2013-2014 State CCR Math	2014-2015 State CCR Math	Diff
■ Grade 3	40.8	40.9	0.1	47.7	46.5	-1.2	49.1	50.0	0.9	48.3	48.8	0.5
■ Grade 4	42.8	43.2	0.4	44.5	47.1	2.6	51.0	49.0	-2.0	47.1	48.5	1.4
■ Grades 5	33.1	37.4	4.3	40.3	42.2	1.9	54.0	52.6	-1.4	50.3	51.3	1.0

2014-2015 RCSS End-of-Grade College and Career Readiness Comparisons with State

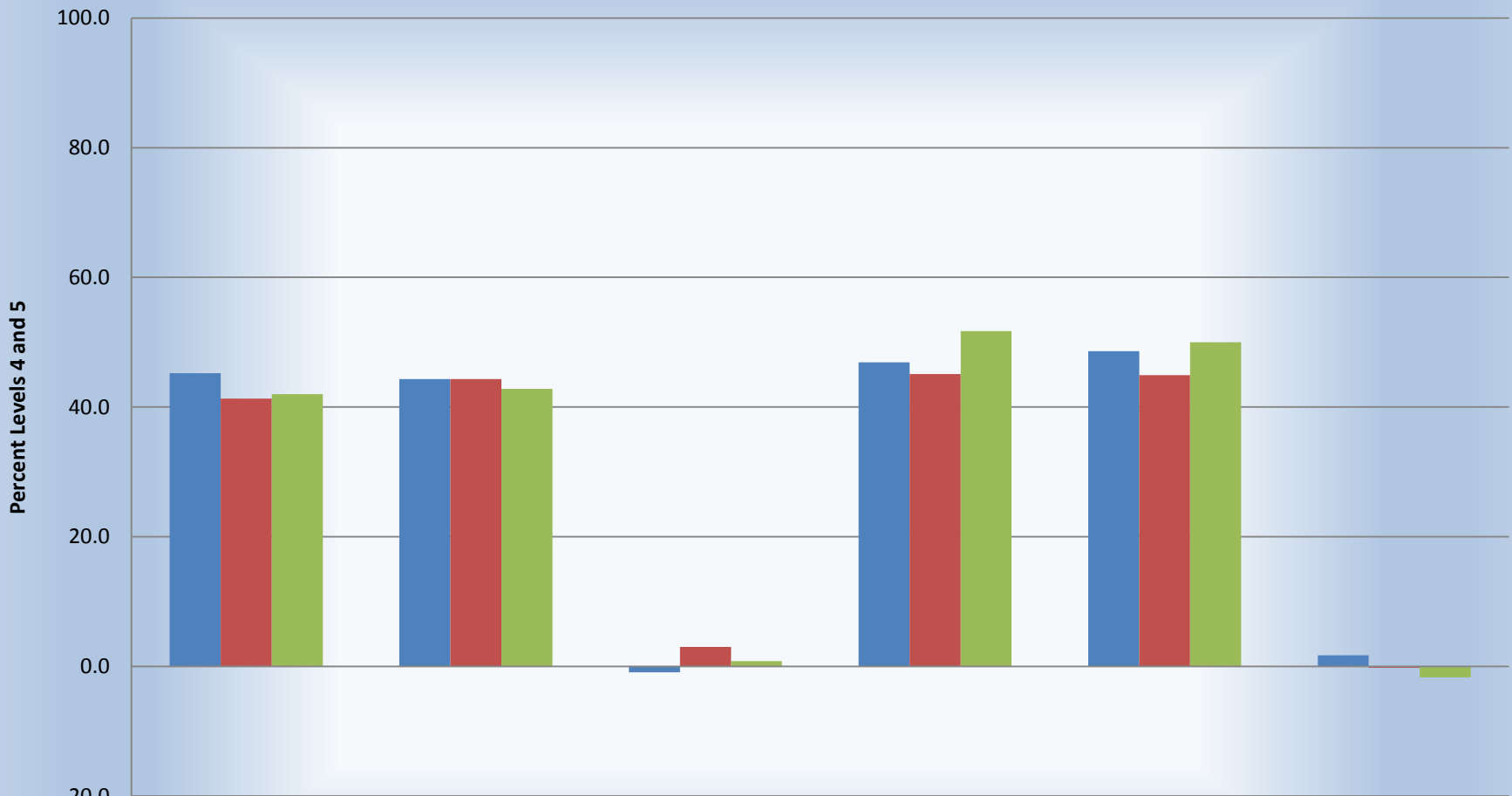


	2013-2014 RCSS CCR Reading	2014-2015 RCSS CCR Reading	Diff	2013-2014 State CCR Reading	2014-2015 State CCR Reading	Diff	2013-2014 RCSS CCR Math	2014-2015 RCSS CCR Math	DIFF	2013-2014 State CCR Math	2014-2015 State CCR Math	Diff
■ Grade 6	41.4	41.1	-0.3	45.7	46.6	0.9	33.5	33.3	-0.2	39.6	41	1.4
■ Grade 7	41.0	39.4	-1.6	47.6	46.5	-1.1	29.0	30.2	1.2	38.9	40	1.1
■ Grades 8	35.3	35.1	-0.2	42.3	41.6	-0.7	27.4	29.0	1.6	34.6	35.8	1.2

2014-2015 RCSS End-of-Grade Science College and Career Readiness Comparisons with State



2014-2015 RCSS End-of-Course College and Career Readiness Comparisons with State



	2013-2014 RCSS CCR	2014-2015 RCSS CCR	Diff	2013-2014 State CCR	2014-2015 State CCR	Diff
Math I	45.2	44.3	-0.9	46.9	48.6	1.7
Biology	41.3	44.3	3.0	45.1	44.9	-0.2
English II	42.0	42.8	0.8	51.7	50.0	-1.7

RCSS COLLEGE and CAREER READINESS Summary

- RCSS students performed below the State in Reading at grades 3-5.
- In Math, RCSS students above the State at grades 3-5.
- RCSS middle school students scored below the State in both Reading and Math.
- In Science at grades 5, RCSS students performed higher than the State and lower at grade 8.
- RCSS high school students performed below the State in Math I, Biology, and English II.

School Performance Grades

- Beginning with the 2013-2014 school year data, per legislation (G.S. 115C-83.15) passed during the 2013 session of the North Carolina General Assembly, School Performance Grades (A-F) based on test scores, and high schools' additional indicators that measure College and Career Readiness.
- Schools that earn an A designation and do not have significant achievement and/or graduation gaps are designated as an A+ school.

School Performance Grades Comparisons

- Randolph Early College earned an A+ designation.
- The majority of our schools (83.88%) received a letter grade of C or better.

School Performance Grades Comparisons

Overall Grade	2014-2015 Number of Schools	2014-2015 Percent	2013-2014 Number of Schools	2013-2014 Percent
A+	1	3.23	NA	NA
A	0	0.00	1	3.23
B	5	16.13	7	22.58
C	20	64.52	16	51.61
D	4	12.90	7	22.58
F	1	3.23	0	0.00

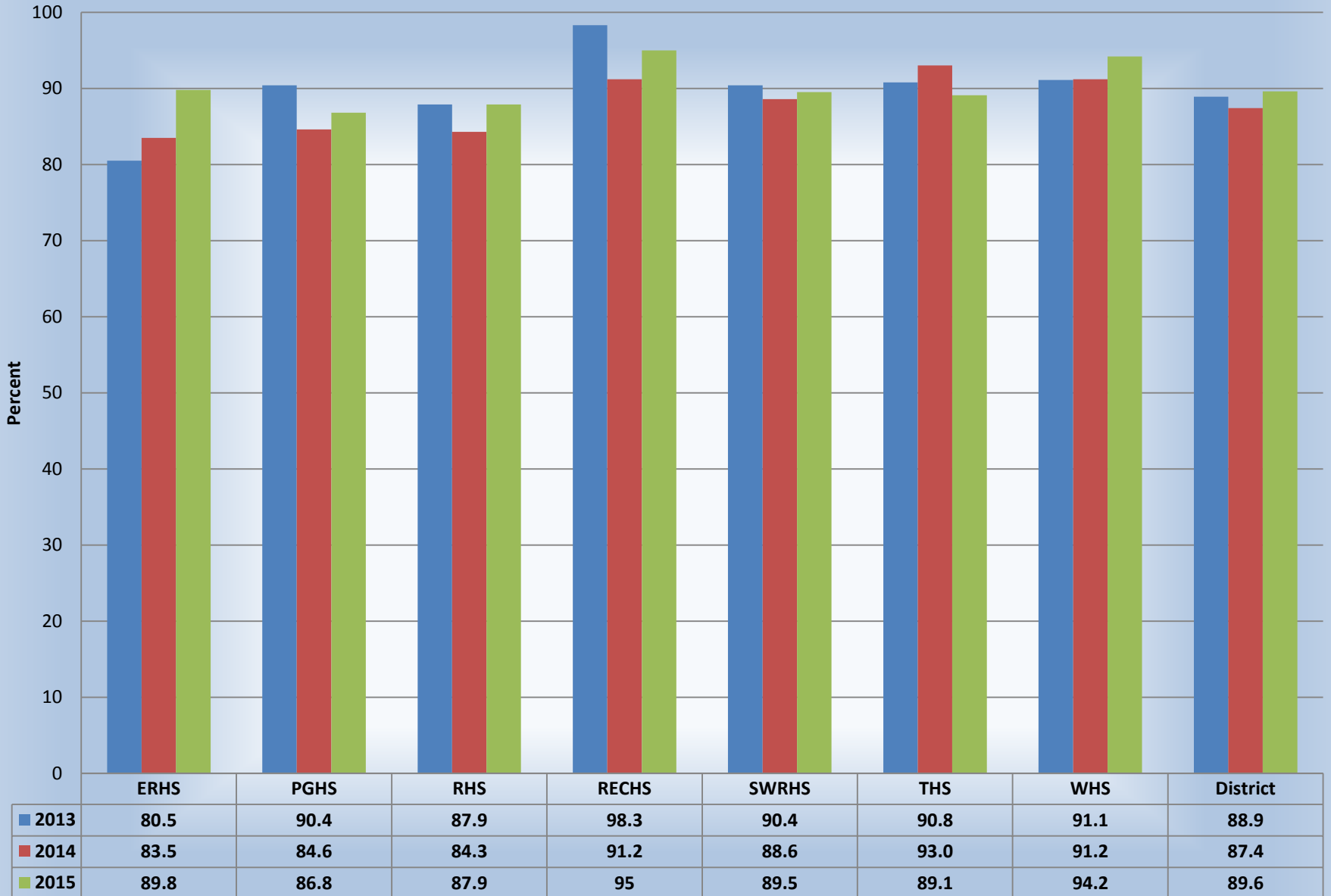
2013-2015 Performance Score and Grade by School

School	2014-2015 School Performance Grade Score	2014-2015 School Performance Grade	2013-2014 School Performance Grade Score	2013-2014 School Performance Grade
Archdale Elementary	62	C	60	C
Braxton Craven Middle	59	C	61	C
Coleridge Elementary	62	C	59	C
Eastern Randolph High	55	C	53	D
Farmer Elementary	60	C	63	C
Franklinville Elementary	67	C	66	C
Grays Chapel Elementary	59	C	67	C
Hopewell Elementary	78	B	77	B
John R Lawrence Elementary	62	C	56	C
Level Cross Elementary	55	C	64	C
Liberty Elementary	58	C	54	D
New Market Elementary	69	C	71	B
Northeastern Randolph Middle	57	C	58	C
Providence Grove High	68	C	74	B
Ramseur Elementary	52	D	52	D
Randleman Elementary	56	C	51	D
Randleman High	62	C	59	C
Randleman Middle	49	D	54	D
Randolph Early College High	89	A+	87	A
Seagrove Elementary	65	C	62	C
Southeastern Randolph Middle	39	F	40	D
Southwestern Randolph High	75	B	72	B
Southmont Elementary	55	C	57	C
Southwestern Randolph Middle	51	D	55	C
Tabernacle Elementary	63	C	56	C
Trindale Elementary	76	B	78	B
Trinity Elementary	64	C	63	C
Archdale-Trinity Middle	55	C	59	C
Trinity High	75	B	72	B
Uwharrie Middle	52	D	51	D
Wheatmore High	71	B	71	B

Three Year Graduation Rate

- The 2014-2015 RCSS graduation rate was 89.6%, an increase of 2.2% from the previous school year of 87.4%.
- RCSS continues to remain above the State graduation rate of 85.4%.

Three Year Graduation Rate Comparisons by School and District



Opportunities for Improvement

- End-of-Grade and End-of-Course proficiencies are flat across RCSS and the State. There are some small improvements and some small decreases.
- RCSS performance composite was .5% (52.5%) from the previous year of 53%. The school system needs to continue the focus on Goal 2019. At least 75% of students will perform at or above Level 3 and all subgroups will perform at least “Expected Growth” or higher on all State tests.
- Middle Schools showed the least progress in making gains during the 2014-2015 school year.
- High Schools need to continue to focus on Other Indicators and Math I in order to improve student proficiency.