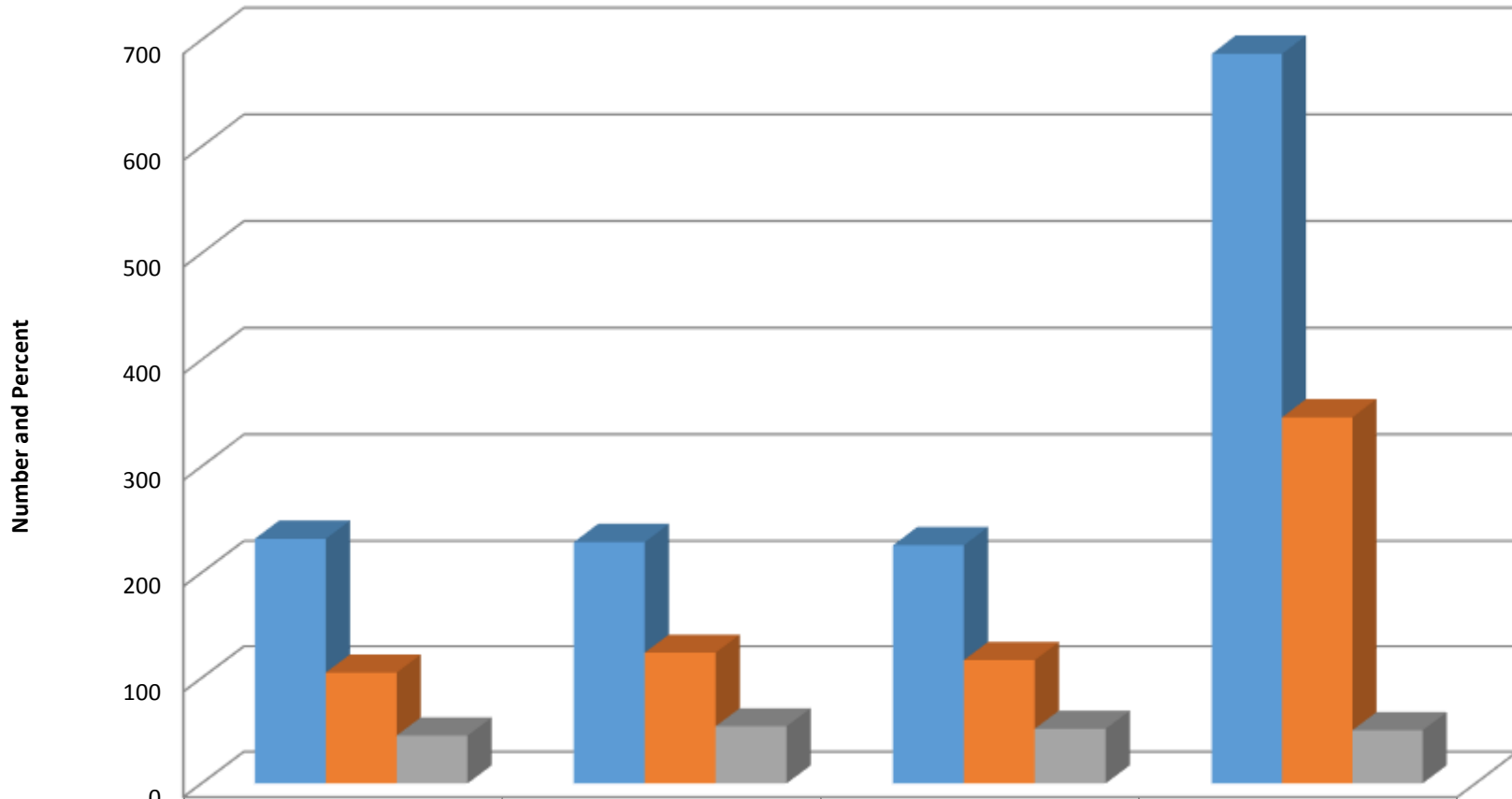
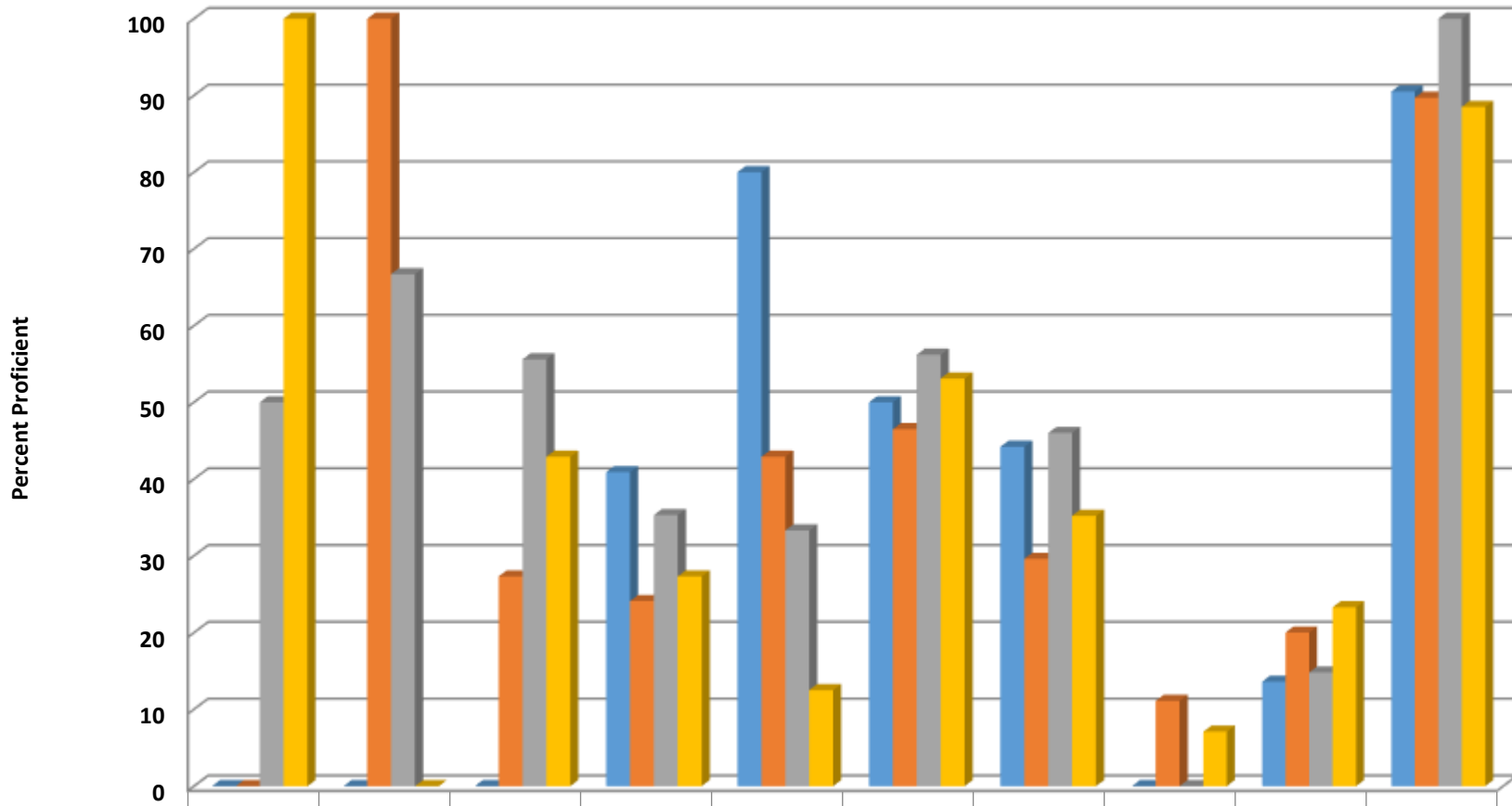


Randleman High 2016-2017 All EOC's GLP



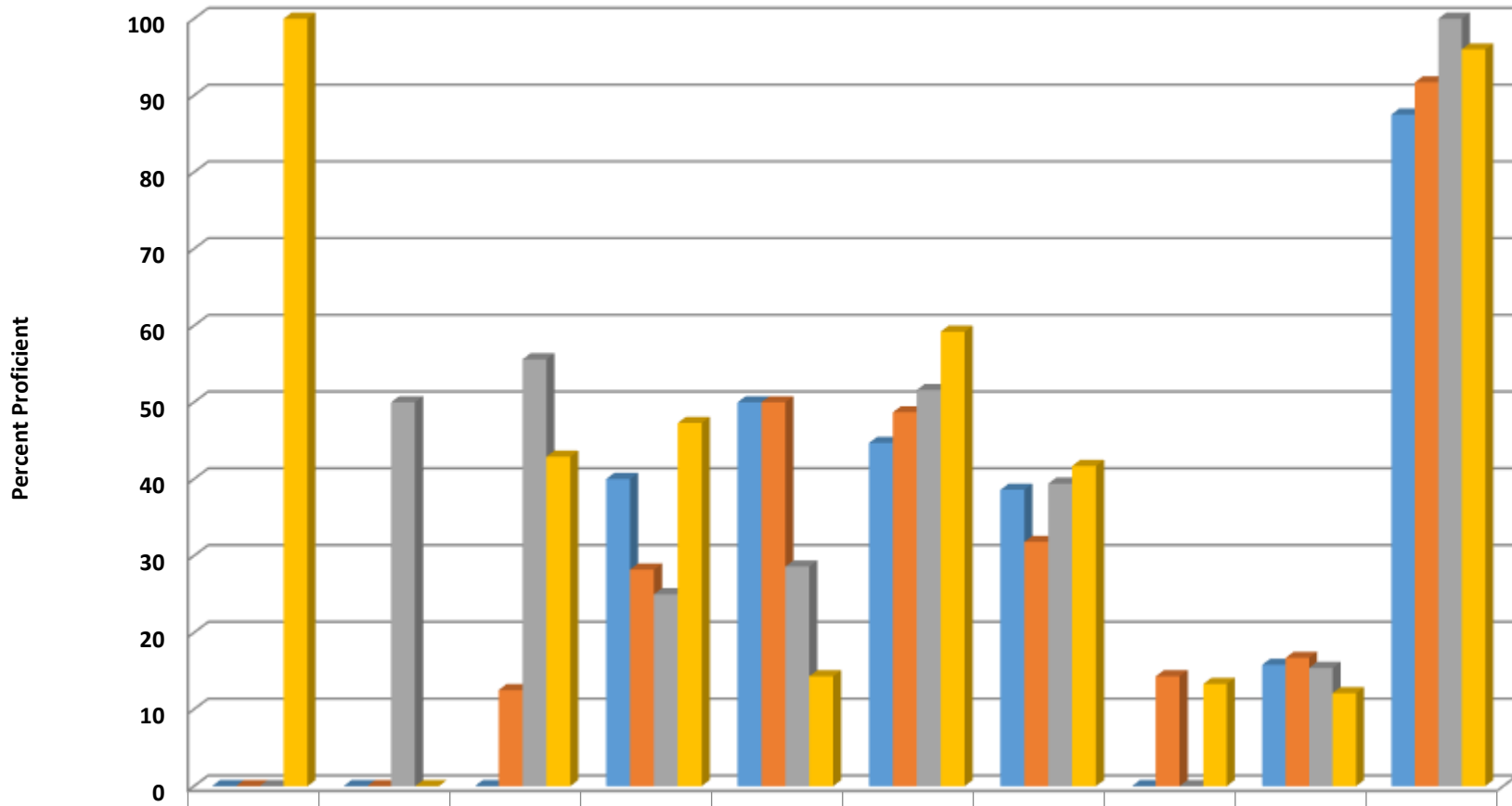
	Bio	E2	M1	EOC
denomiantor	232	229	226	687
numerator	105	124	117	346
percent	45.3	54.1	51.8	50.4

Randleman High Biology Percent Proficient by Subgroups



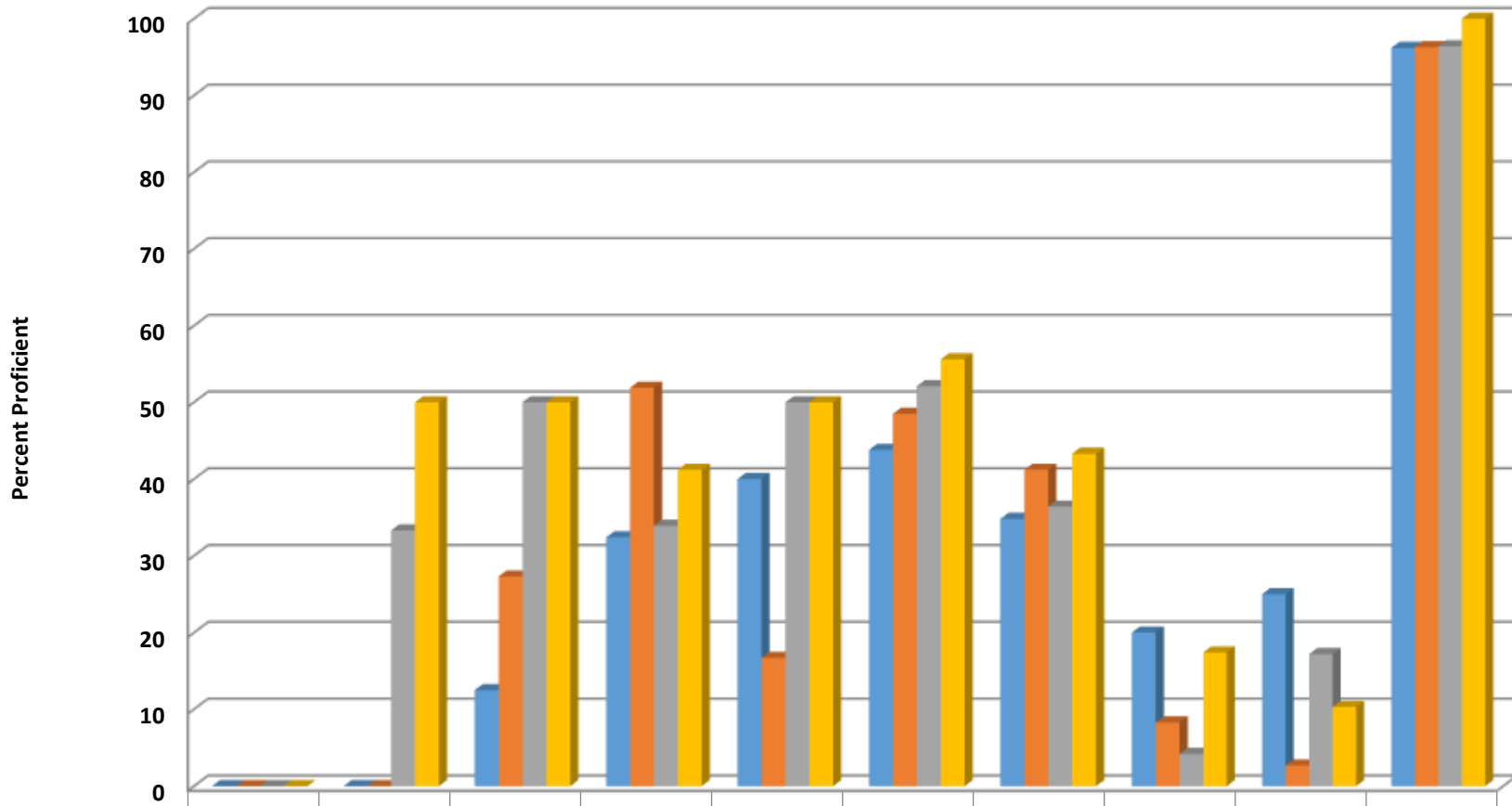
	AMIN	ASIA	BLCK	HISP	MULT	WHTE	EDS	LEP	SWD	AIG
■ 2014 prof pct	0	0	0	40.9	80	50	44.2	0	13.6	90.5
■ 2015 prof pct	0	100	27.3	24.1	42.9	46.5	29.6	11.1	20	89.7
■ 2016 prof pct	50	66.7	55.6	35.3	33.3	56.2	46	0	14.8	100
■ 2017 prof pct	100	0	42.9	27.3	12.5	53.1	35.2	7.1	23.3	88.5

Randleman High English II Percent Proficient by Subgroups



	AMIN	ASIA	BLCK	HISP	MULT	WHTE	EDS	LEP	SWD	AIG
2014 prof pct	0	0	0	40	50	44.7	38.6	0	15.8	87.5
2015 prof pct	0	0	12.5	28.2	50	48.7	31.8	14.3	16.7	91.7
2016 prof pct	0	50	55.6	25	28.6	51.6	39.4	0	15.4	100
2017 prof pct	100	0	42.9	47.3	14.3	59.2	41.7	13.3	12.1	96

Randleman High NC Math I Percent Proficient by Subgroups



	AMIN	ASIA	BLCK	HISP	MULT	WHTE	EDS	LEP	SWD	AIG
2014 prof pct	0	0	12.5	32.4	40	43.8	34.8	20	25	96.2
2015 prof pct	0	0	27.3	51.9	16.7	48.5	41.2	8.3	2.7	96.3
2016 prof pct	0	33.3	50	33.9	50	52.1	36.4	4.2	17.2	96.4
2017 prof pct	0	50	50	41.2	50	55.6	43.3	17.4	10.3	100

Four Year Graduation Subgroup Data

RHS	2016-2017			2015-2016			2014-2015			2013-2014		
Subgroup	Denominator	Numerator	Percent	Denominator	Numerator	Percent	Denominator	Numerator	Percent	Denominator	Numerator	Percent
All Students	199	172	86.4	323	202	87.1	215	189	87.9	198	167	84.3
Male	111	94	84.7	125	109	87.2	119	101	84.9	105	82	78.1
Female	88	78	88.6	107	93	86.9	96	88	91.7	93	85	91.4
American Indian	*	*	*	*	*	*	*	*	*	*	*	*
Asian	*	*	8	*	*	*	*	*	*	*	*	*
Black	6	5	83.3	*	*	*	13	12	92.3	19	17	89.5
Hispanic	39	36	92.3	55	51	92.7	44	38	86.4	29	27	93.1
Two or More Races	6	-	>95	*	*	*	5	-	>95	*	*	*
White	146	124	84.9	169	144	85.2	151	133	88.1	145	118	81.4
Economically Disadvantaged	88	70	79.5	126	106	84.1	100	82	82	100	80	80
Limited English Proficient	5	4	80	*	*	*	*	*	*	*	*	*
Students With Disabilities	14	12	85.7	17	13	76.5	18	14	77.8	16	11	68.8
Academically Gifted	19	-	>95	22	-	>95	13	-	>95	5	-	>95