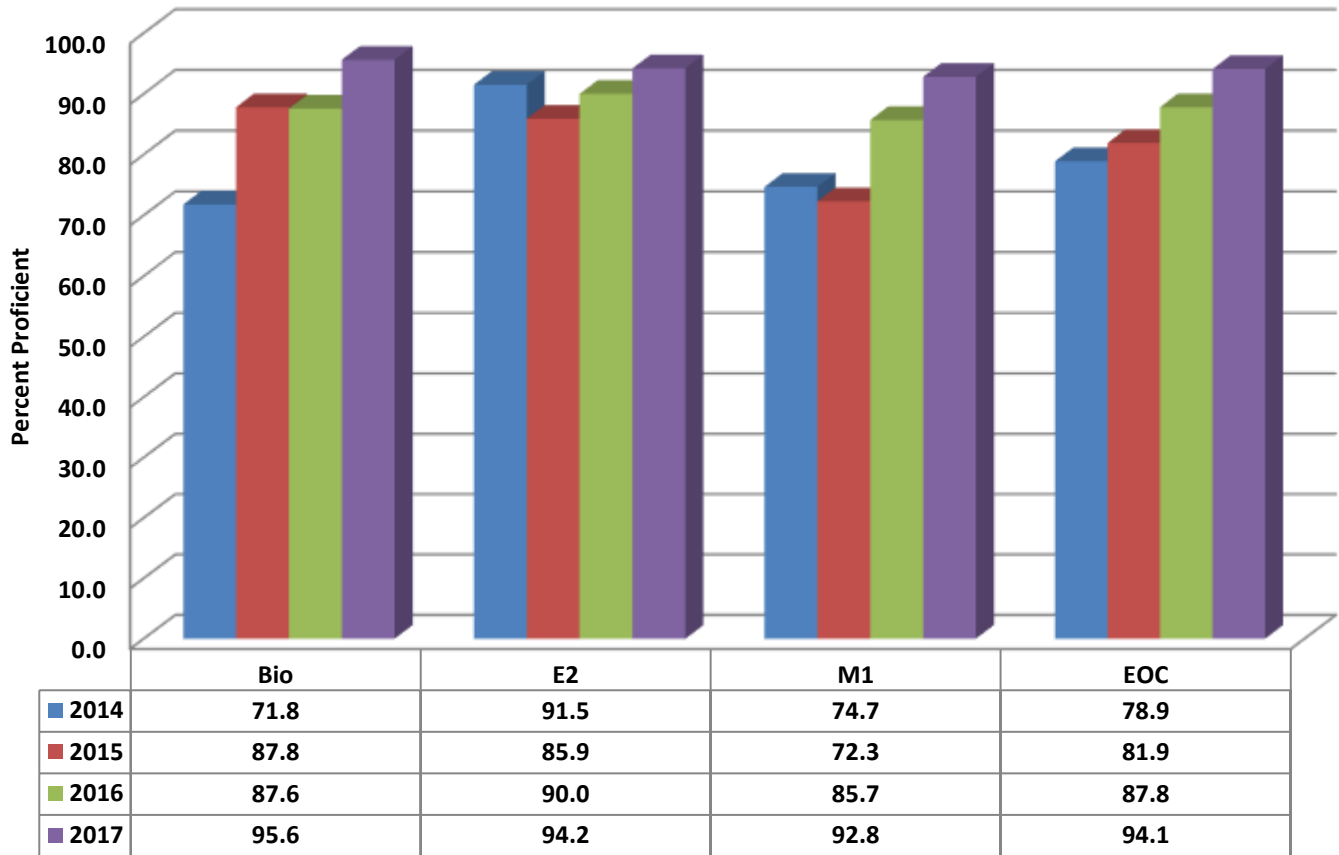


Randolph Early College High School Four Year Comparison Using GLP



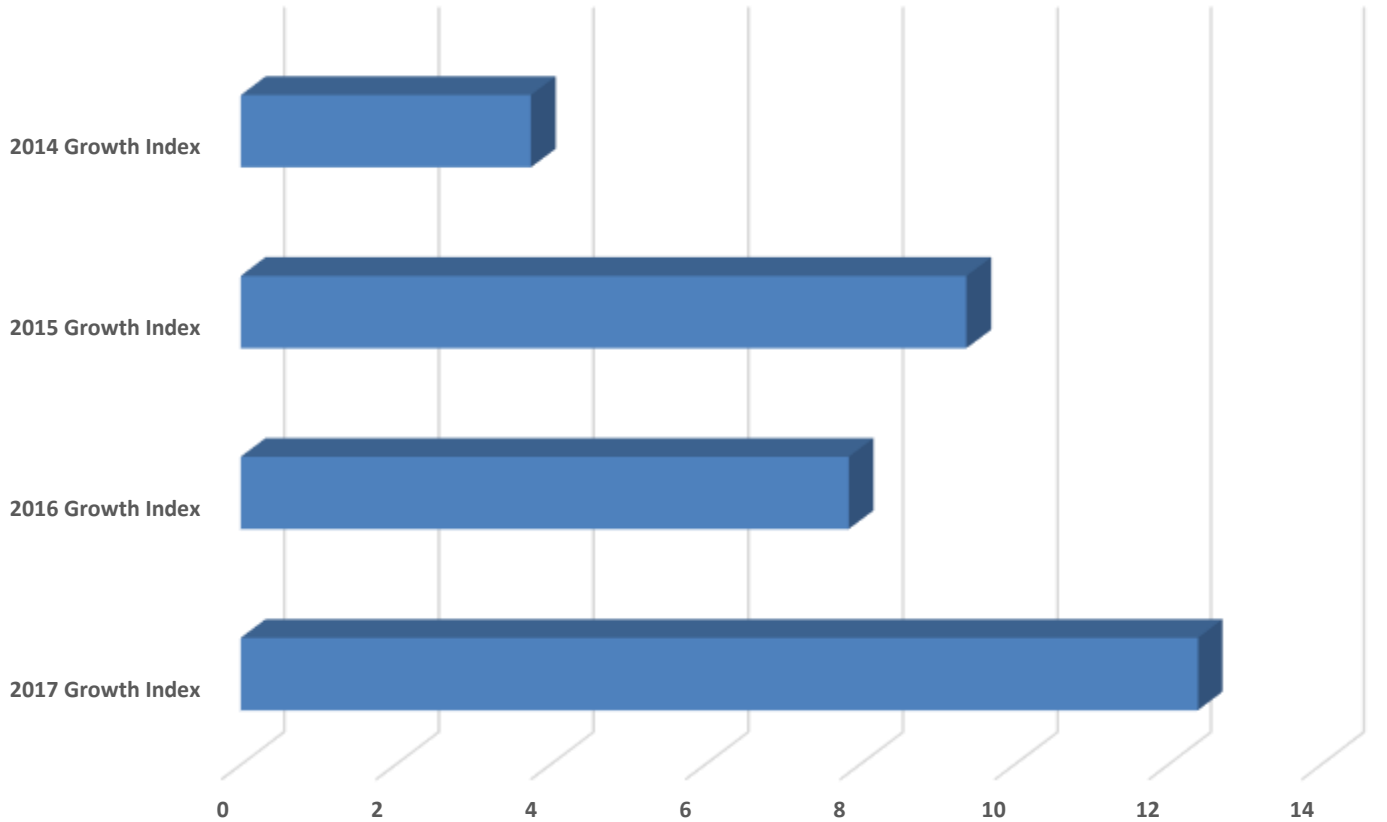
READY Accountability Model

	CCR Denominator	CCR Percent	GLP Denominator	GLP Percent
2014	237	64.6	237	78.9
2015	276	74.6	276	81.9
2016	270	78.9	270	87.8
2017	273	86.1	273	94.1

State and Former Federal AMO Targets

	EVASS Status	Total Targets	Targets Met	Target Percent
2014	Exceeded Expected Growth	28	28	100.0
2015	Exceeded Expected Growth	32	32	100.0
2016	Exceeded Expected Growth	19	19	100.0
2017	Exceeded Expected Growth	17	17	100.0

Randolph Early College High Growth Index



	2017 Growth Index	2016 Growth Index	2015 Growth Index	2014 Growth Index
RECHS	12.39	7.86	9.38	3.75

Growth Index

	School Accountability Type	Index	Level
2014	Math I, Biology, and English II	3.75	Exceeded Expected Growth
2015	Math I, Biology, and English II	9.38	Exceeded Expected Growth
2016	Math I, Biology, and English II	7.86	Exceeded Expected Growth
2017	Math I, Biology, and English II	12.39	Exceeded Expected Growth